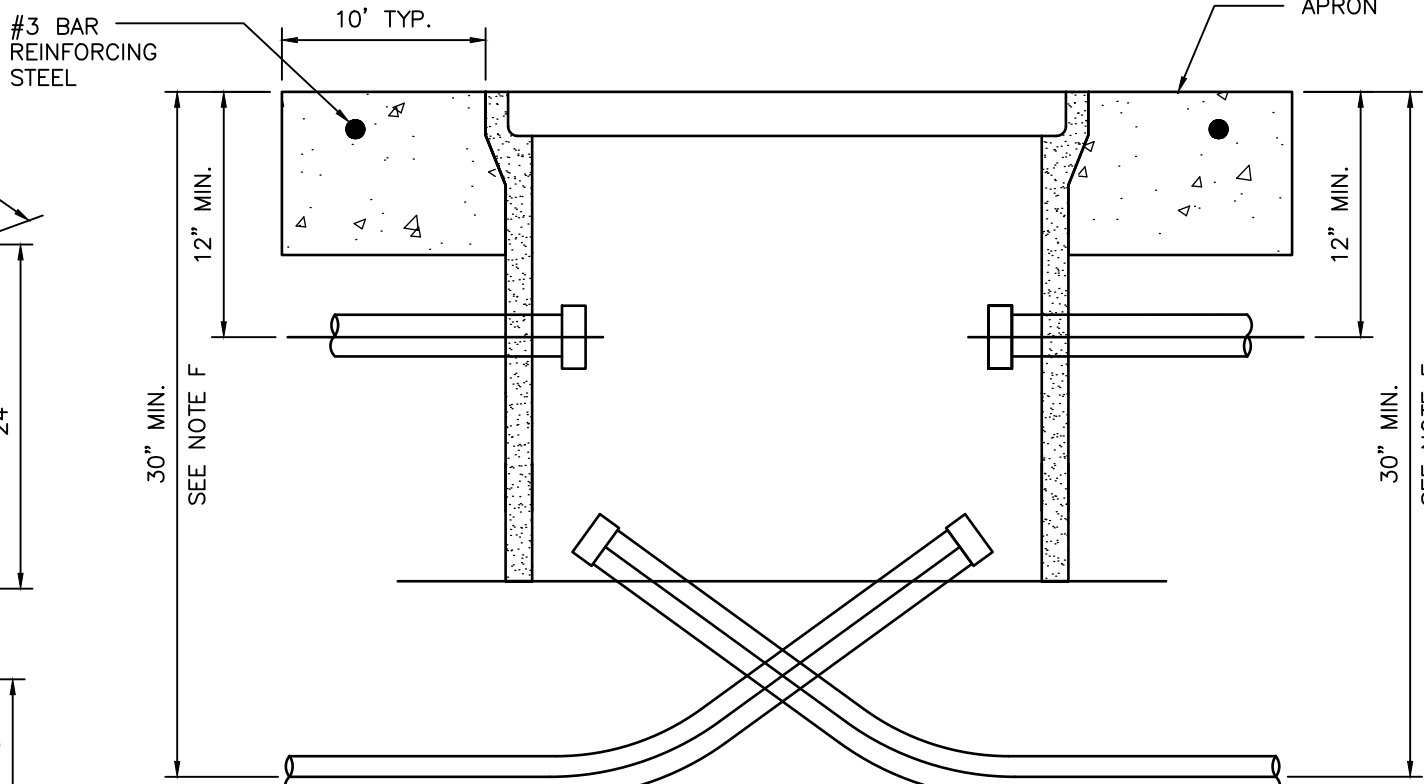
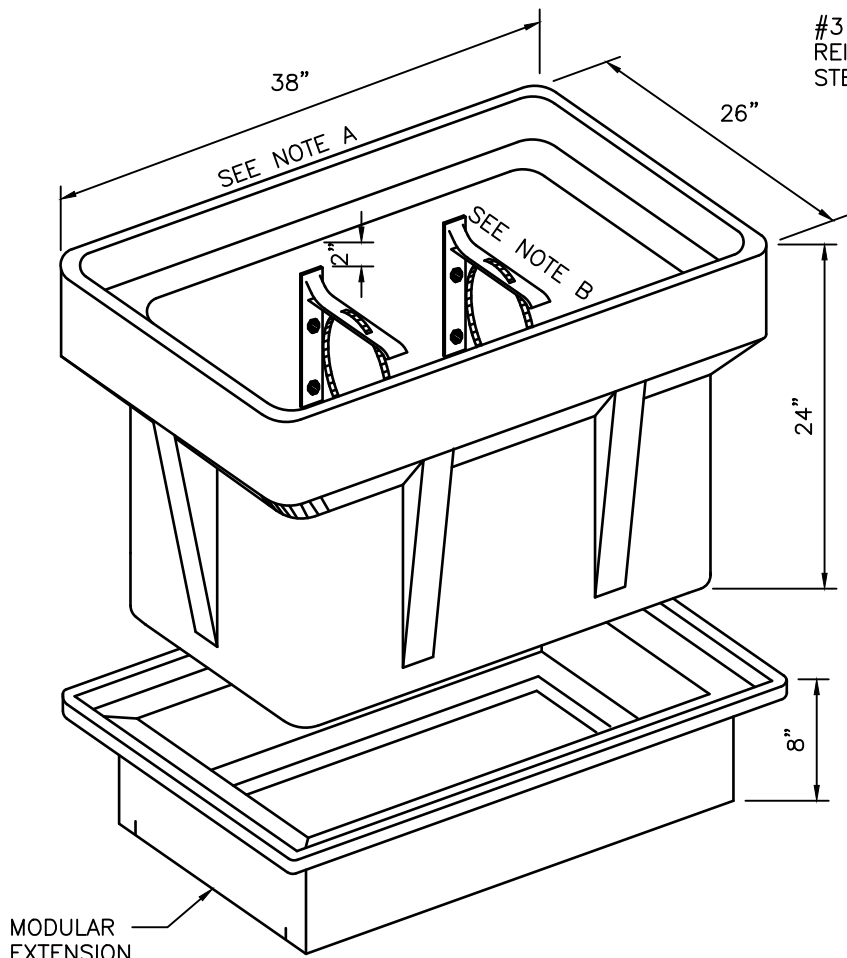
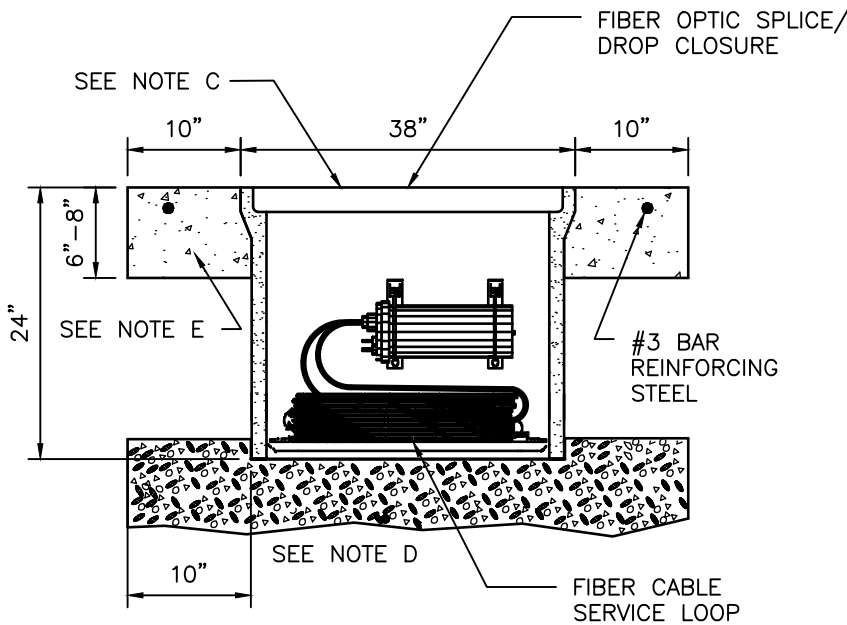


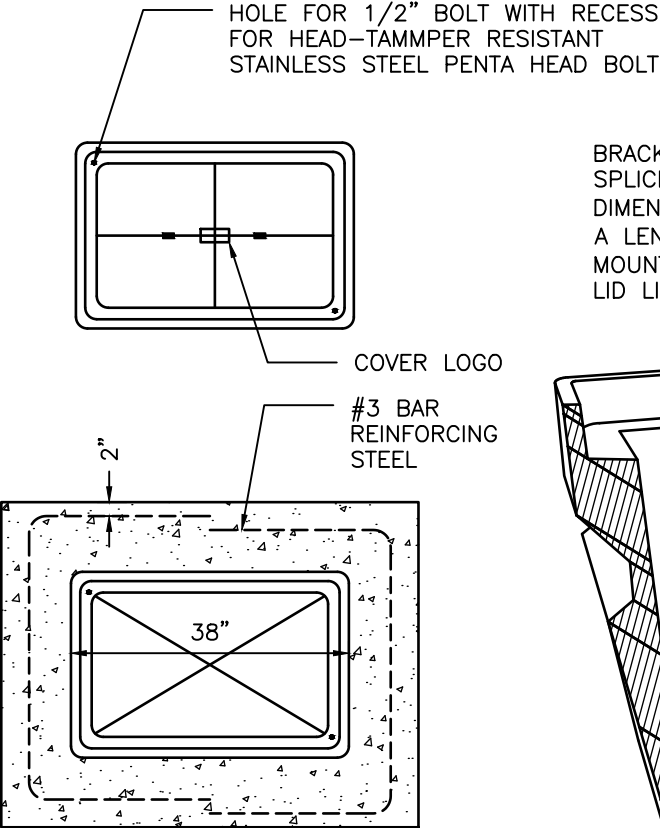
DISCLAIMER: THE USE OF THIS STANDARD IS GOVERNED BY THE TEXAS ENGINEERING PRACTICE ACT. THE DESIGN REQUIREMENTS ON THIS STANDARD DO NOT PURPORT TO ADDRESS ALL OF THE SAFETY CONCERNS ASSOCIATED WITH THEIR USE. THE ENGINEER OF RECORD (EOR) IS TO REVIEW THESE DESIGN REQUIREMENTS AND BY AUTHORIZING THEIR USE, ACCEPTS RESPONSIBILITY FOR THEIR APPLICABILITY, ADEQUACY AND SAFETY. NO WARRANTY OF ANY KIND IS MADE BY THE CITY OF HOUSTON FOR ANY PURPOSES WHATSOEVER. THE CITY OF HOUSTON ASSUMES NO RESPONSIBILITY FOR INCORRECT RESULTS OR DAMAGES RESULTING FROM ITS USE.



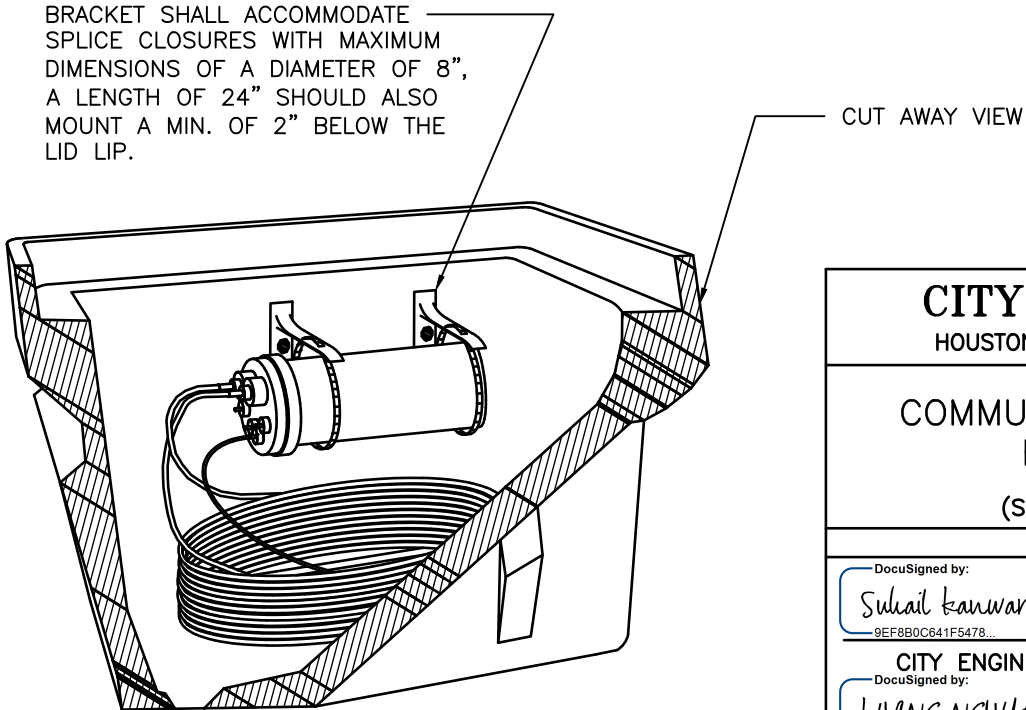
SERVICE BOX CUT AWAY SIDE VIEW
(ACCEPTABLE CONDUIT TERMINATION)



CROSS SECTION VIEW
INSTALLED COMMUNICATION
SERVICE BOX DETAIL



TOP VIEW
COMMUNICATION SERVICE BOX DETAIL



LEGEND

- A. SPLICE CLOSURE BRACKET PROVIDES MINIMUM LID CLEARANCE OF 2" AND SUPPORTS FIBER OPTIC SPLICE CLOSURE(8" DIA. X 24" LONG AT 18 LBS).
- B. NYLON TIES
- C. HEAVY DUTY REMOVABLE LID WITH LOCKING PROVISIONS, PROVIDING 15,000 LB. OVER 10" SQUARE STATIC LOAD SUPPORT.
- D. 6" TO 8" OF GROUND OR CRUSHED ROCK BED FOR DRAINAGE.
- E. CONCRETE APRON; 3,000 PSI AS REQUIRED FOR THE LOCATION,(DRIVE, SIDEWALK, PARKING LOT OR AREAS OF LIGHT TRAFFIC).
- F. CONDUIT BURIAL DEPTH SHALL BE 30" MIN. OR 12" (+/-2") MEASURED TO THE CENTERLINE OF THE CONDUIT.

NOTE:

THE CROSS SECTION VIEW OF BOX IN ORDER TO VIEW DROP CLOSURE AND CABLE CONTAINED WITHIN.

CITY OF HOUSTON HOUSTON PUBLIC WORKS STANDARD	
COMMUNICATIONS SERVICE BOX DETAILS (SCALE: NOT TO SCALE)	
APPROVED BY:	
DocuSigned by: Suhail Kanwar 9EF8B0C641F5478... CITY ENGINEER	DocuSigned by: Carol Haddock A93C410B72B3453... DIRECTOR OF HPW
DocuSigned by: Khang Nguyen 95A29EFD75B4CD... CITY TRAFFIC ENGINEER	
EFF DATE: NOV-27-2023	DWG NO: 16737-01