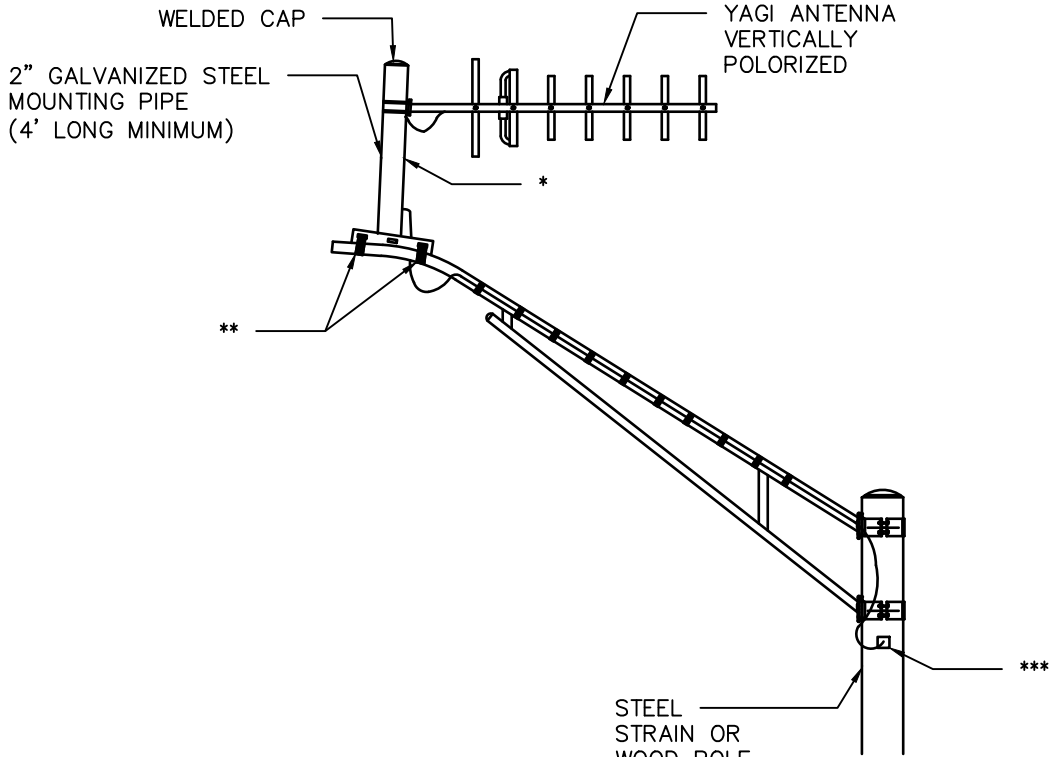
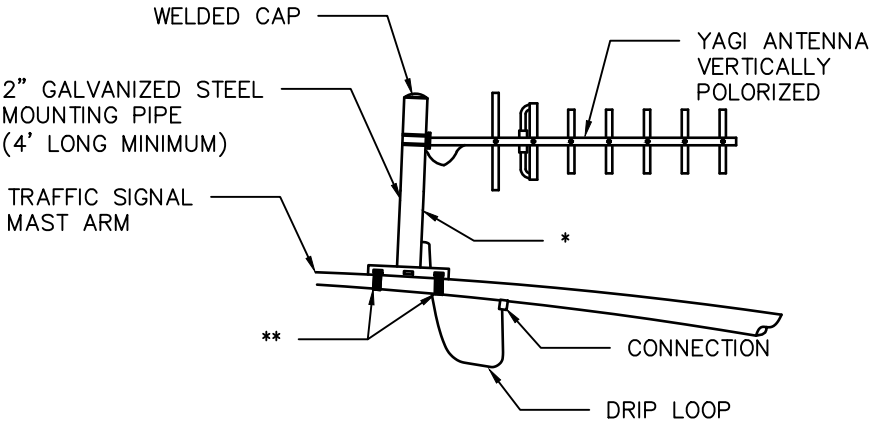


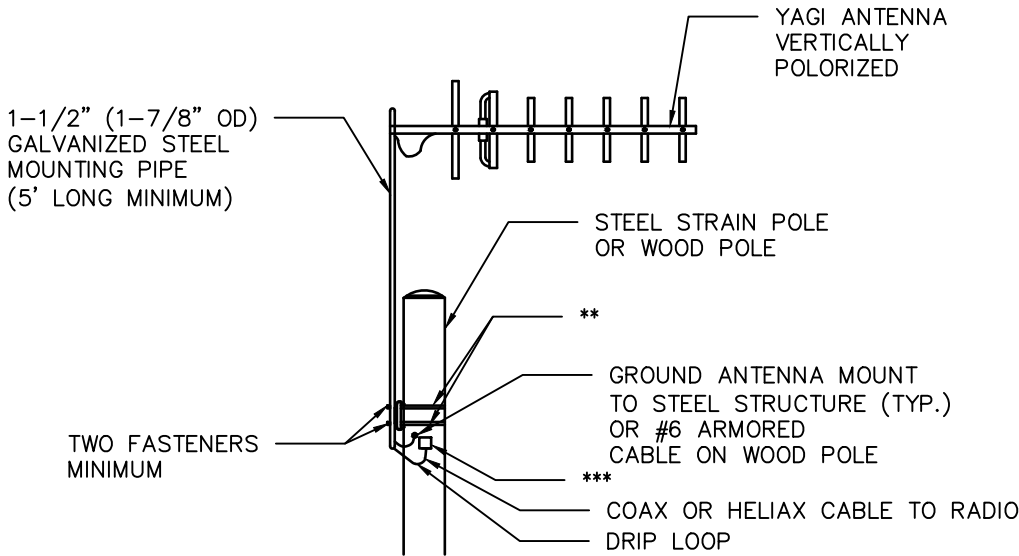
DISCLAIMER: THE USE OF THIS STANDARD IS GOVERNED BY THE TEXAS ENGINEERING PRACTICE ACT. THE DESIGN REQUIREMENTS ON THIS STANDARD DO NOT PURPORT TO ADDRESS ALL OF THE SAFETY CONCERNS ASSOCIATED WITH THEIR USE. THE ENGINEER OF RECORD (EOR) IS TO REVIEW THESE DESIGN REQUIREMENTS AND BY AUTHORIZING THEIR USE, ACCEPTS RESPONSIBILITY FOR THEIR APPLICABILITY, ADEQUACY AND SAFETY. NO WARRANTY OF ANY KIND IS MADE BY THE CITY OF HOUSTON FOR ANY PURPOSES WHATSOEVER. THE CITY OF HOUSTON ASSUMES NO RESPONSIBILITY FOR INCORRECT RESULTS OR DAMAGES RESULTING FROM ITS USE.



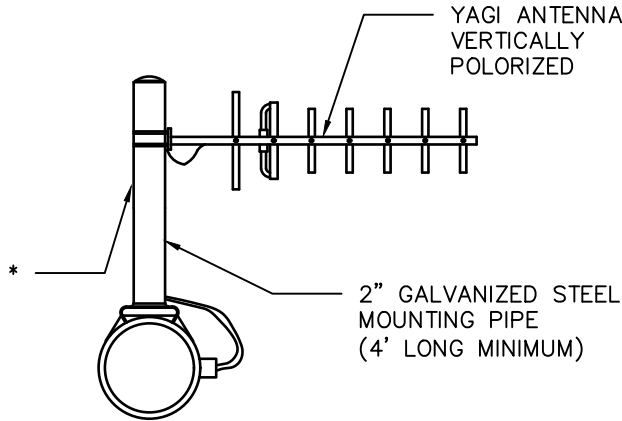
LUMINAIRE ARM MOUNT



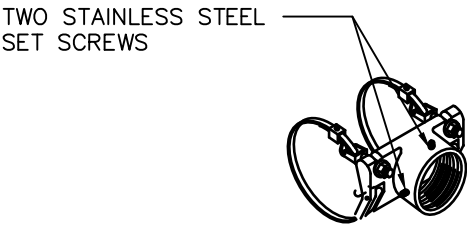
MAST ARM MOUNT



POLE MOUNT



SIDE VIEW



BAND MOUNT BRACKET DETAIL

- * 4.0' PIPE EXTENSION WHEN MOUNTED ON TRAFFIC SIGNAL MAST ARM OR LUMINAIRE ARM.
- ** 5/8" (MIN.) STAINLESS STEEL BANDING 2 PLACES MIN.
- *** ENTRY INTO STEEL POLE OR CONDUIT WEATHERHEAD ON WOOD POLE

NOTES:

1. MOUNT ANTENNAS TO PROVIDE THE HIGHEST LEVEL OF RELIABILITY BETWEEN SENDING AND RECEIVING UNITS.
2. PERFORM A PATH STUDY TO DETERMINE EXACT MOUNTING LOCATION OF ANTENNAS BY RADIO SUPPLIER.
3. INSTALL ANTENNAS AS DETAILED OR AS DIRECTED BY THE SPREAD SPECTRUM RADIO SUPPLIER.
4. FURNISH MOUNTING BRACKETS FOR ANTENNAS ATTACHED TO VERTICAL PIPE AS RECOMMENDED BY SPREAD SPECTRUM RADIO SUPPLIER.
5. UNLESS NOTED, USE 5/8" STAINLESS STEEL BANDING MATERIAL TO INSTALL ANTENNA MOUNTS.
6. PROVIDE WATER TIGHT CABLE ENTRY AND EXIT POINTS IN THE TRAFFIC SIGNAL MAST ARM AND/OR POLES.
7. FOR SPREAD SPECTRUM COAX OR HELIAX CABLE ATTACHED TO LUMINAIRE ARM, PROVIDE UV STABILIZED TIE-WRAP THAT IS APPROVED FOR OUTDOOR USE.

CITY OF HOUSTON
HOUSTON PUBLIC WORKS STANDARD

ANTENNA MOUNTING
DETAILS

(SCALE: NOT TO SCALE)

APPROVED BY:

DocuSigned by:
Suhail Kanwar
9EF8B0C641F5478...
CITY ENGINEER
DocuSigned by:
HAIRING NGUYEN
95A29EFD75B4CD...
CITY TRAFFIC ENGINEER

DocuSigned by:
Carol Haddock
A93C410B72B3453...
DIRECTOR OF HPW