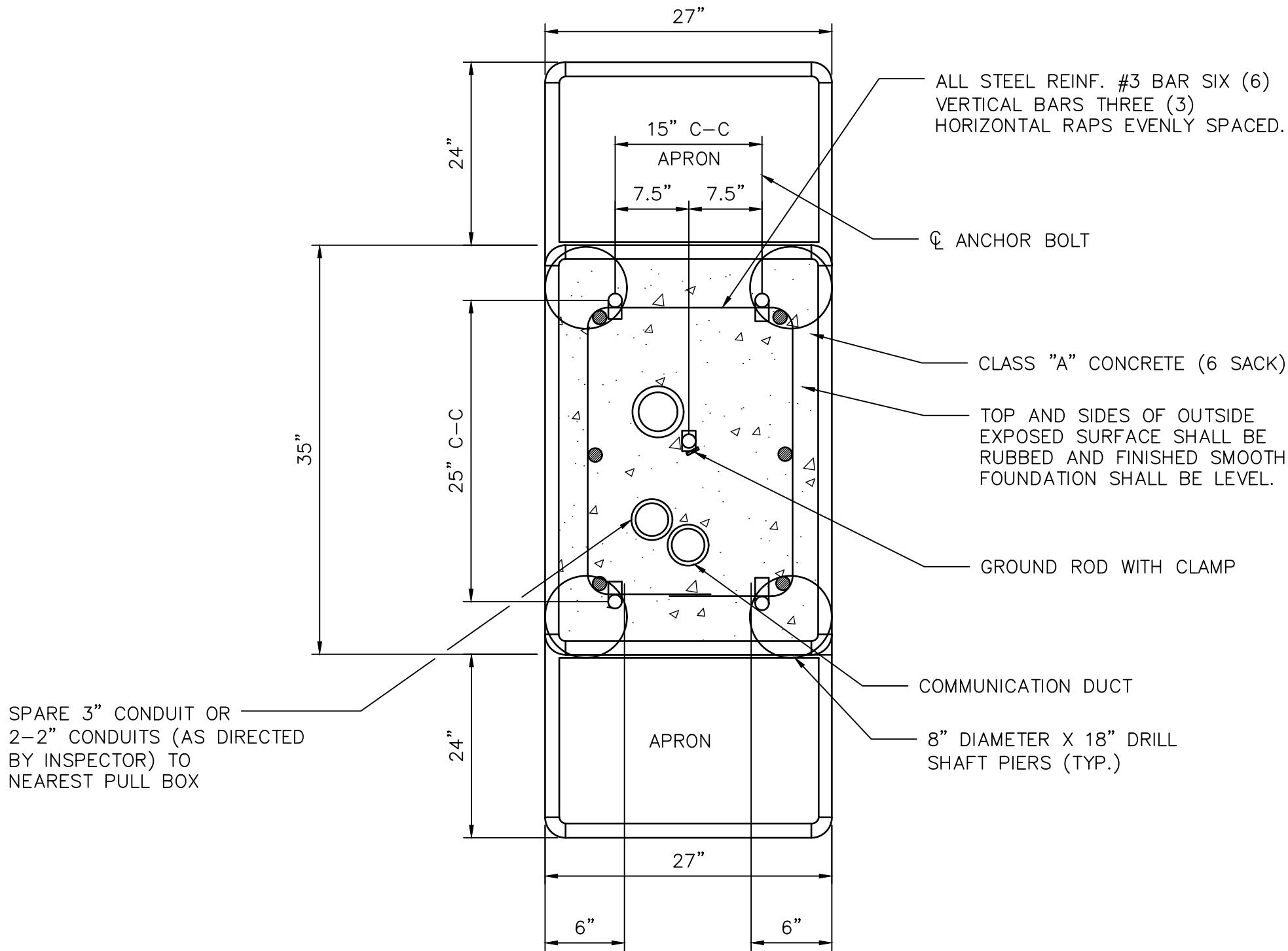
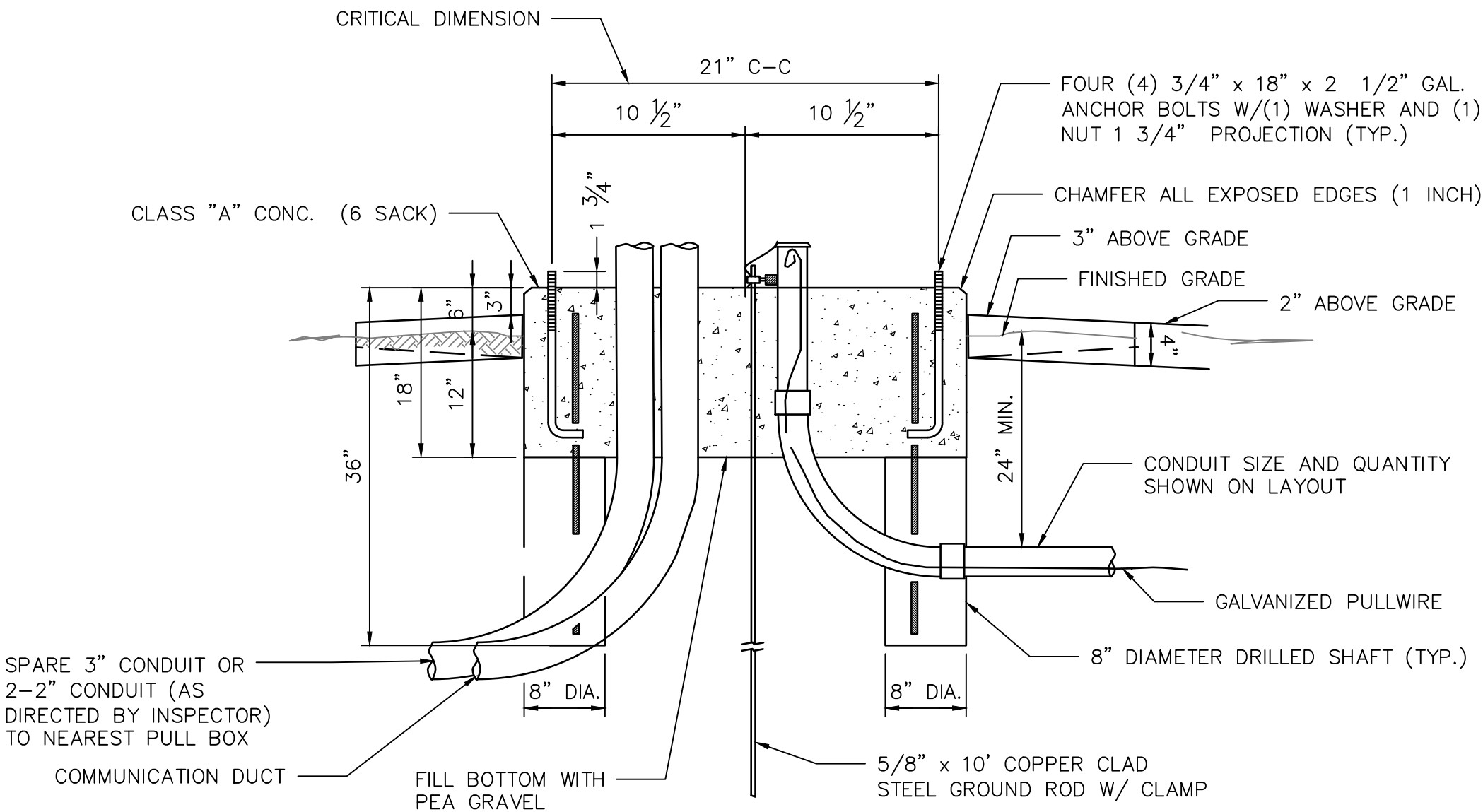


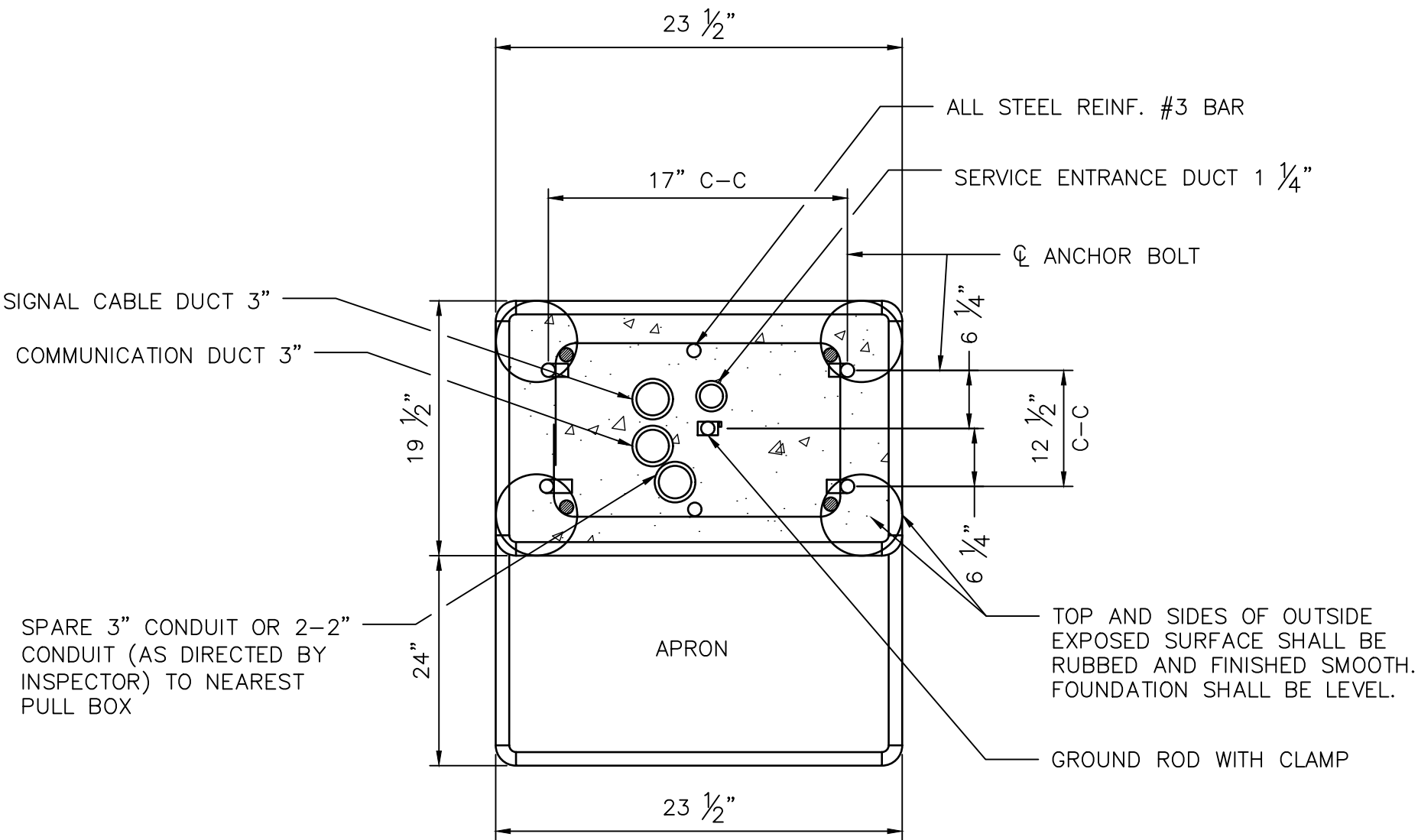
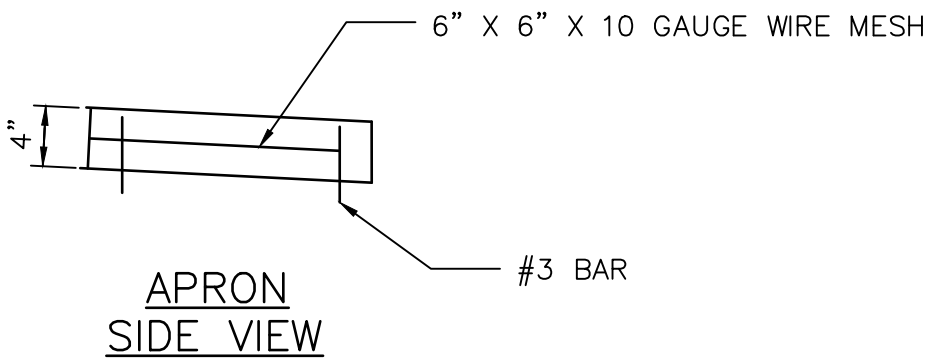
DISCLAIMER: THE USE OF THIS STANDARD IS GOVERNED BY THE TEXAS ENGINEERING PRACTICE ACT. THE DESIGN REQUIREMENTS ON THIS STANDARD DO NOT PURPORT TO ADDRESS ALL OF THE SAFETY CONCERNS ASSOCIATED WITH THEIR USE. THE ENGINEER OF RECORD (EOR) IS TO REVIEW THESE DESIGN REQUIREMENTS AND BY AUTHORIZING THEIR USE, ACCEPTS RESPONSIBILITY FOR THEIR APPLICABILITY, ADEQUACY AND SAFETY. NO WARRANTY OF ANY KIND IS MADE BY THE CITY OF HOUSTON FOR ANY PURPOSES WHATSOEVER. THE CITY OF HOUSTON ASSUMES NO RESPONSIBILITY FOR INCORRECT RESULTS OR DAMAGES RESULTING FROM ITS USE.



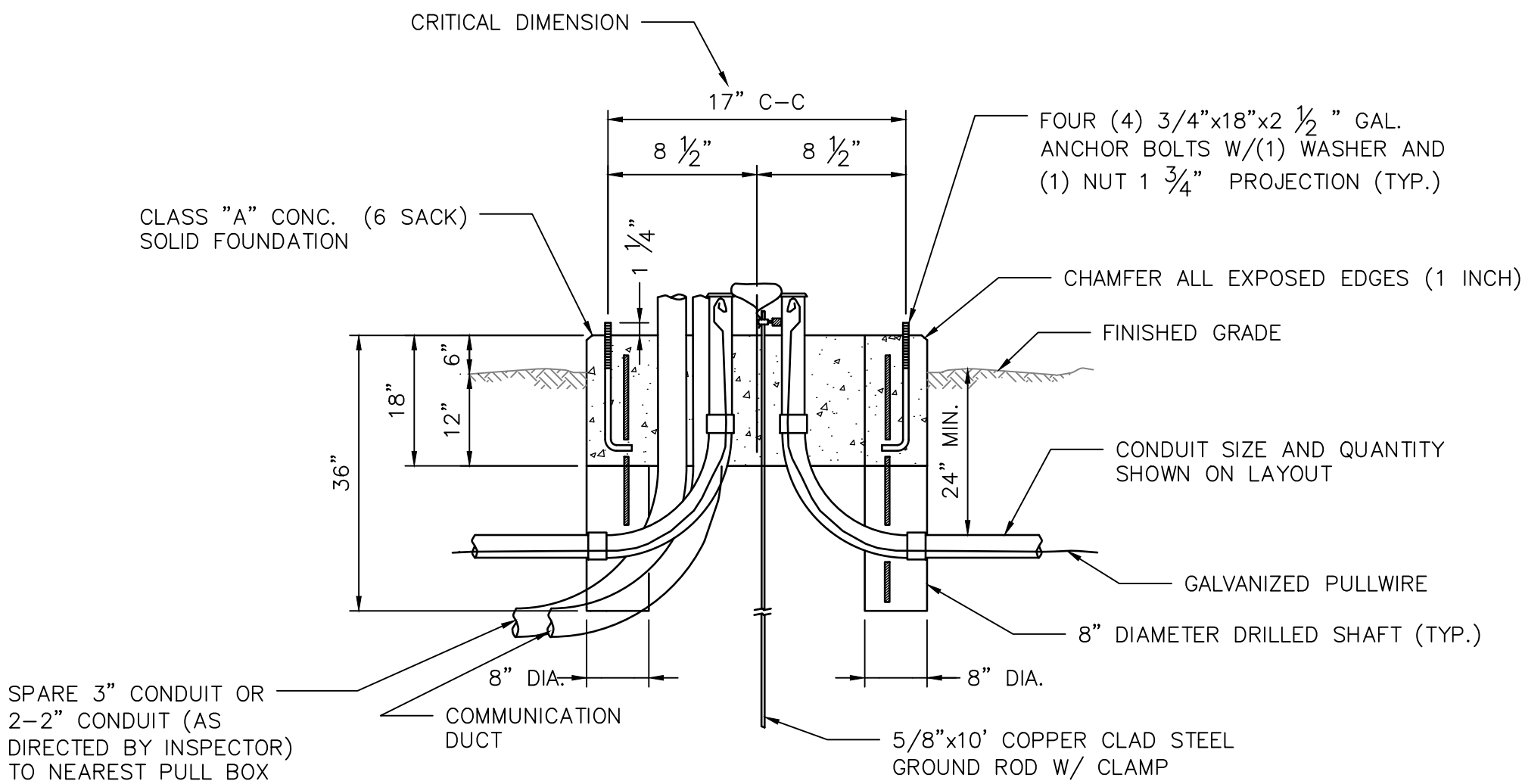
342-HOUSING 1 DETAIL TOP VIEW



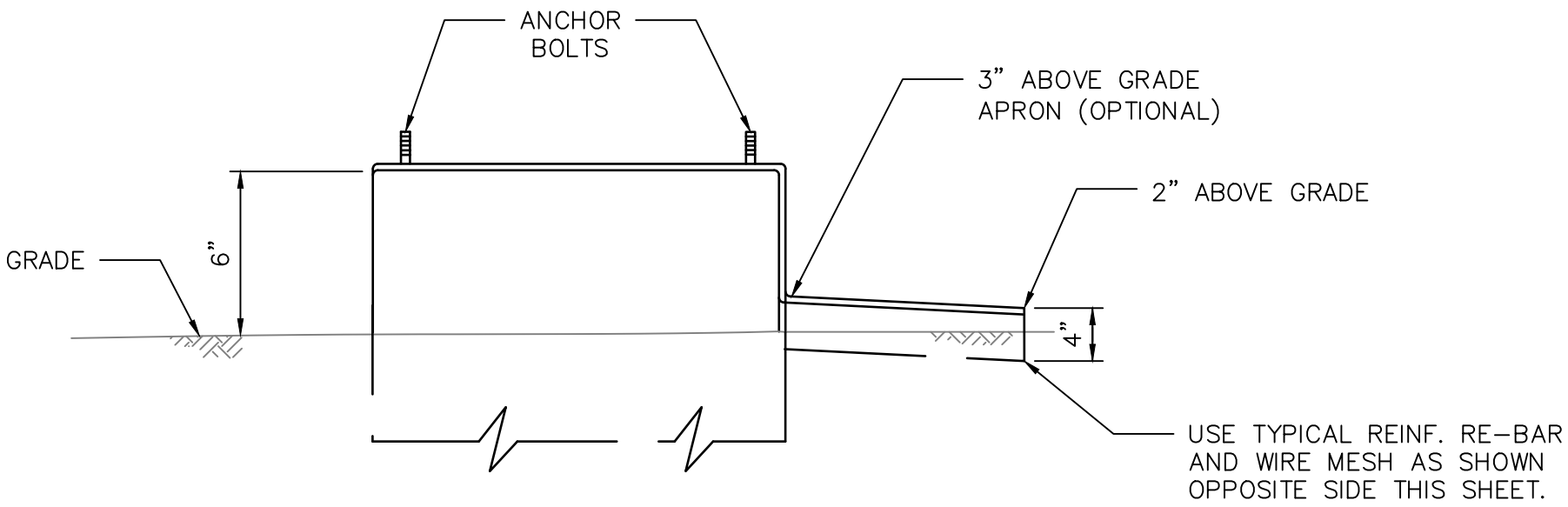
342-HOUSING 1 DETAIL SIDE VIEW



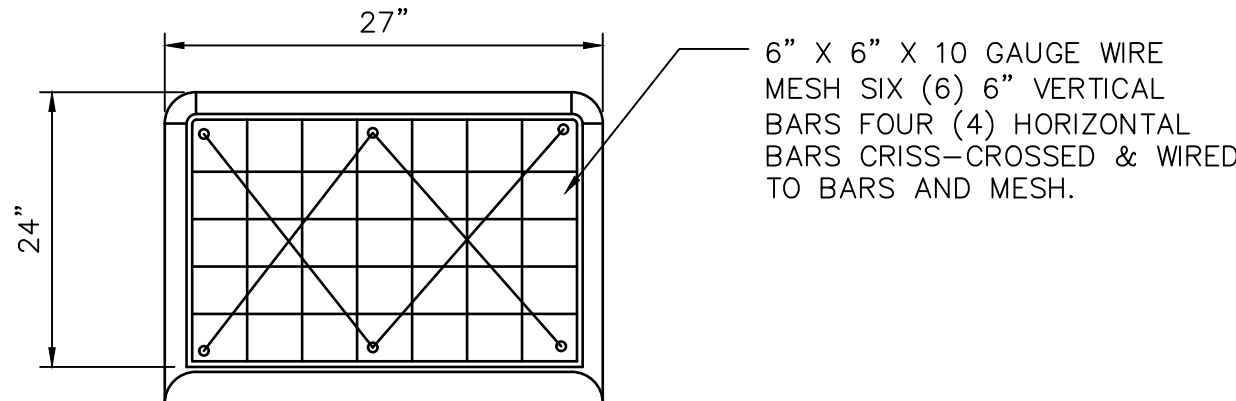
303 DETAIL



303 DETAIL SIDE VIEW



303 DETAIL



APRON DETAIL TOP VIEW

NOTES:

1. ALL CONDUIT ELBOWS TO BE RGS

APPROVED BY: <div>DocuSigned by: <b>Sulail Kanwar</b> 9EF9B0C641F5478...</div>	APPROVED BY: <div>DocuSigned by: <b>KATHIE NAUJEN</b> 9SA29EFDA75B4CD...</div>
CITY ENGINEER	CITY TRAFFIC ENGINEER
APPROVED BY: <div>DocuSigned by: <b>Carl Hallack</b> A98C410B72B3453</div>	
DIRECTOR OF HOUSTON PUBLIC WORKS	
EFF DATE: NOV-27-2023	DWG NO: 16730-01
<div>CITY OF HOUSTON</div> <div>HOUSTON PUBLIC WORKS STANDARD</div>	
CONTROLLER FOUNDATIONS	
SHEET 01 OF 03	
FOR CITY OF HOUSTON USE ONLY	
DRAWING SCALE	
NOT TO SCALE	