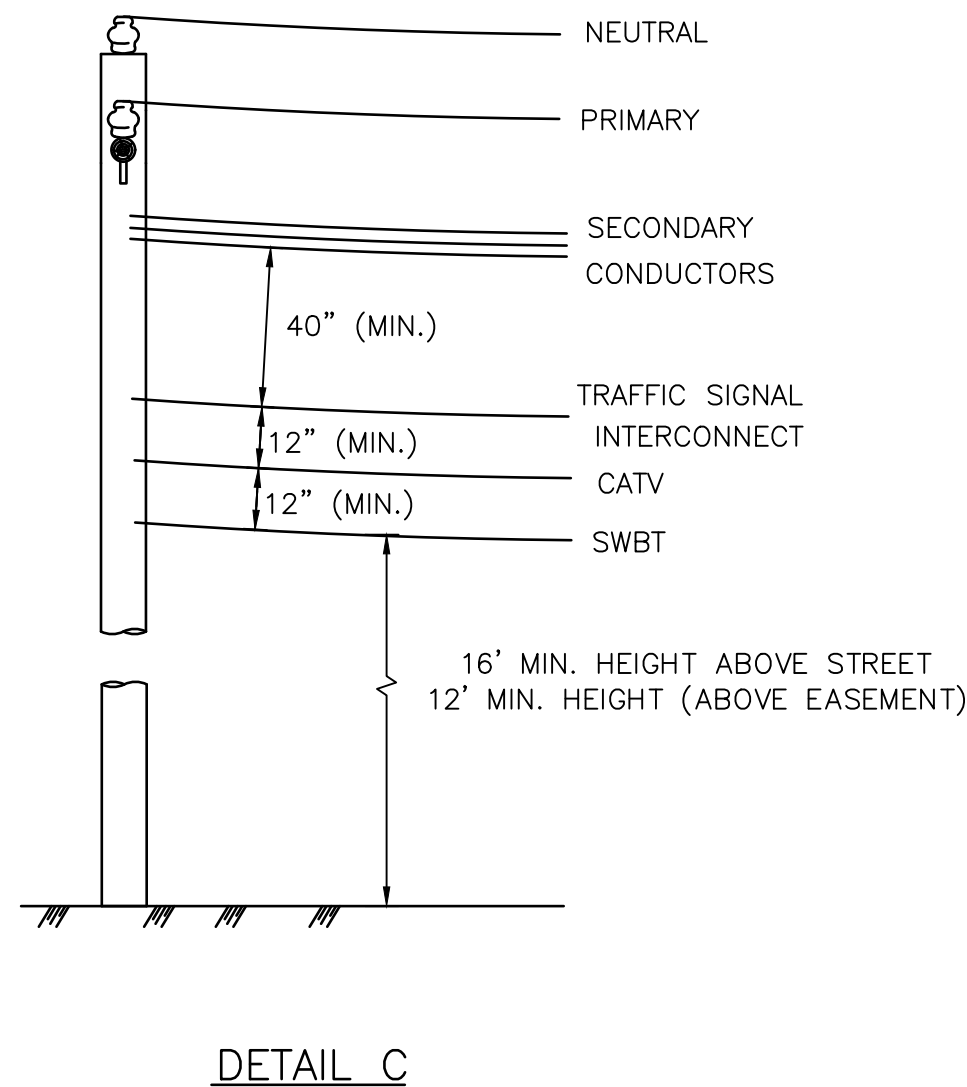
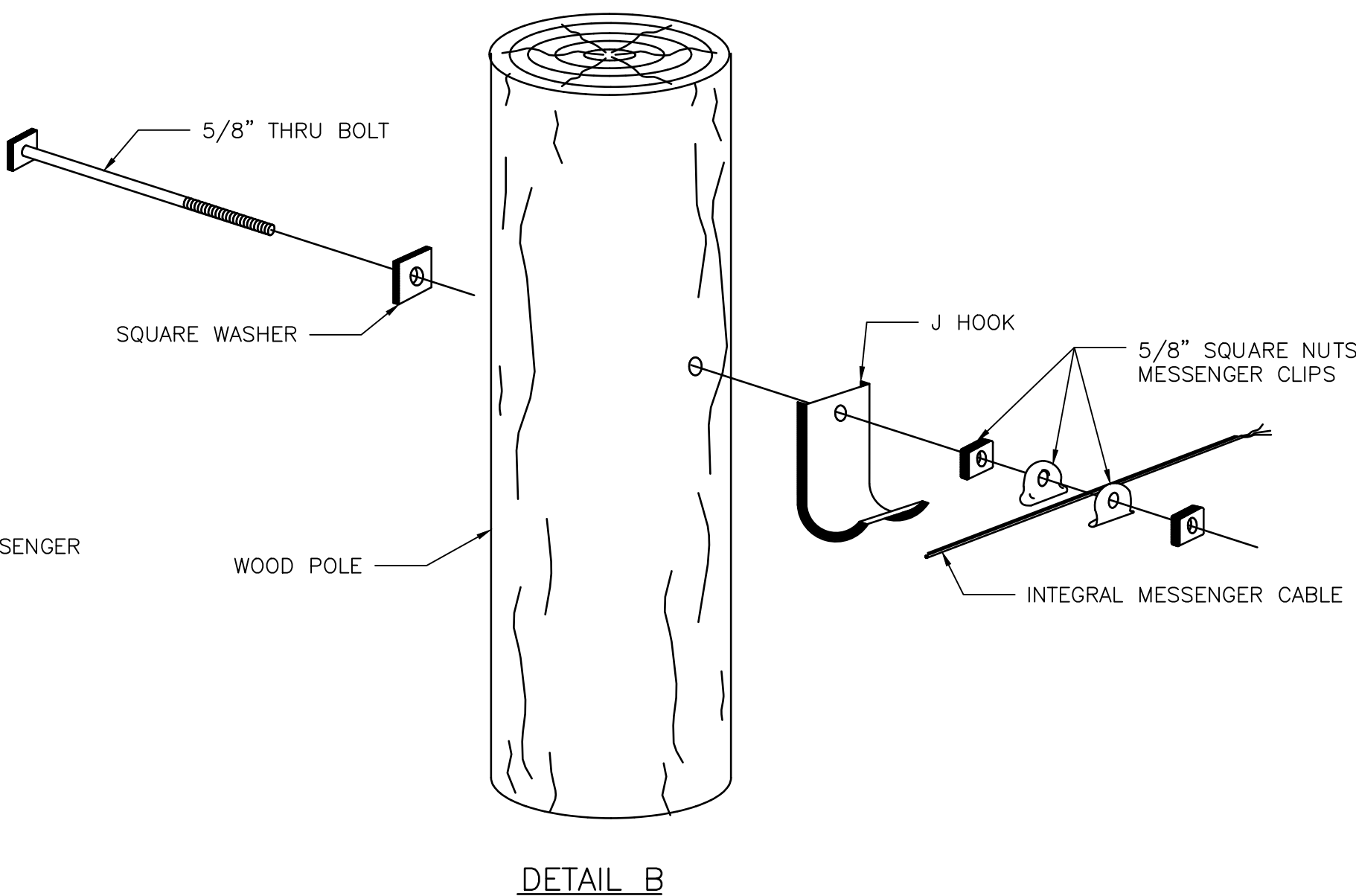
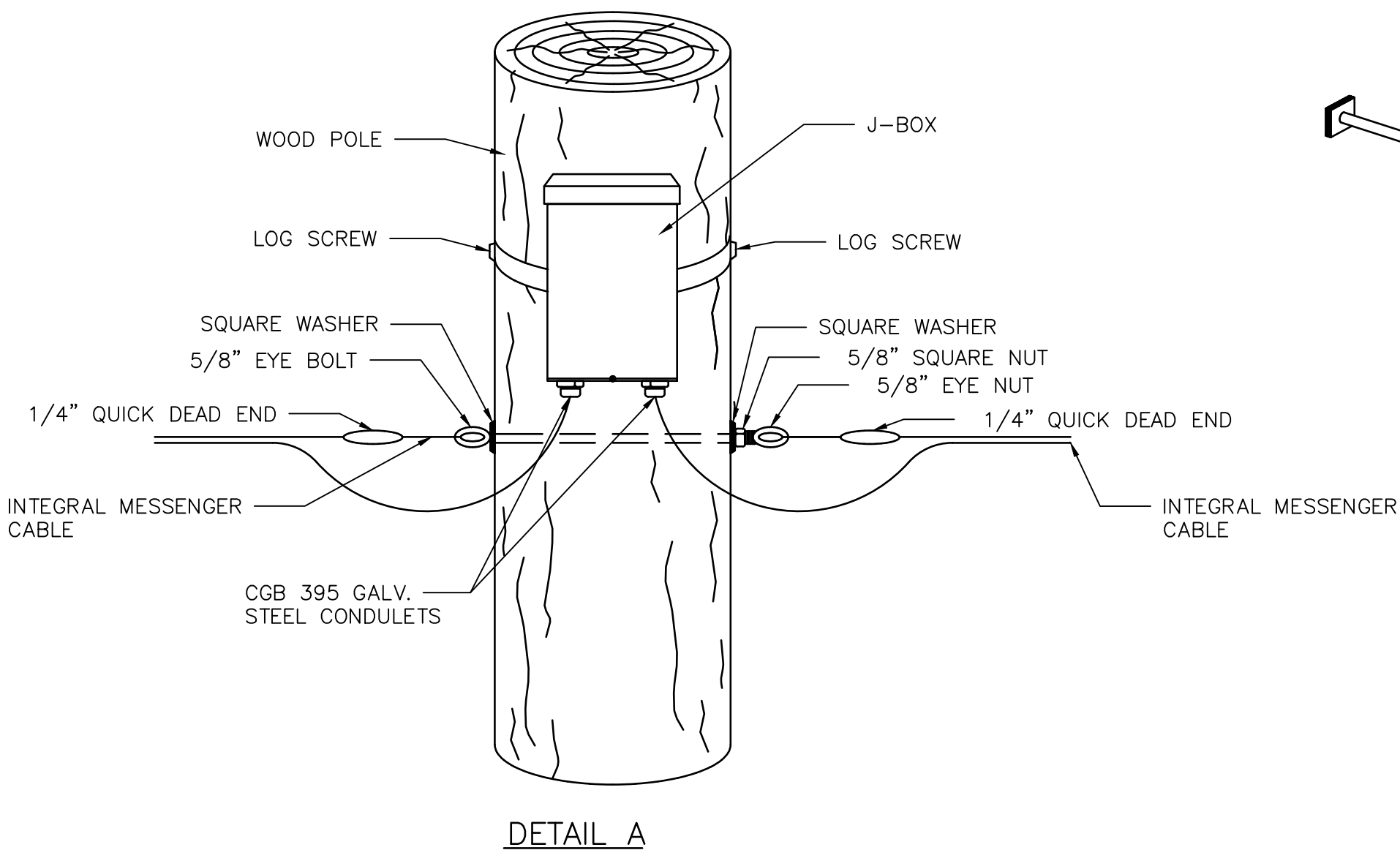
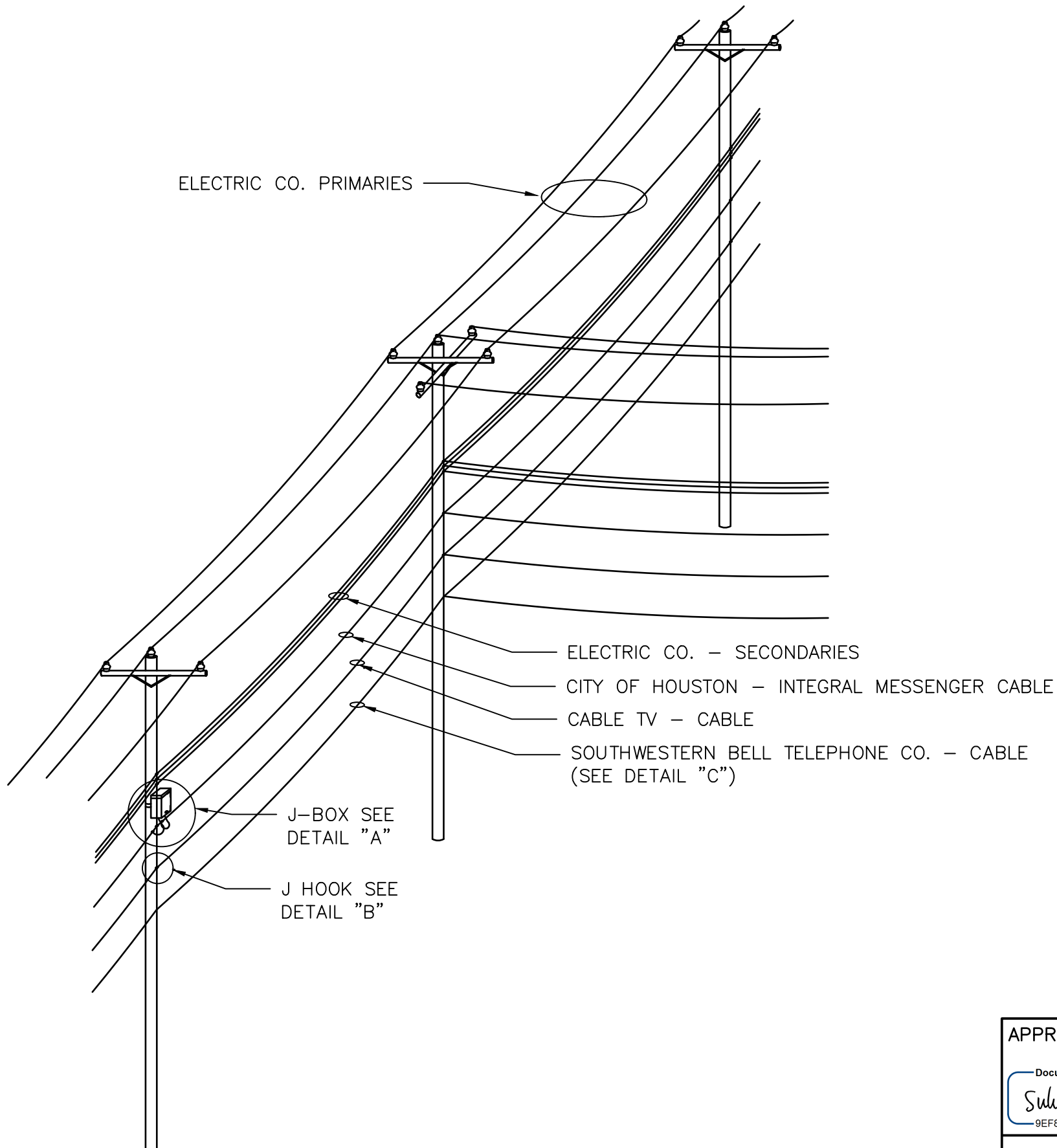
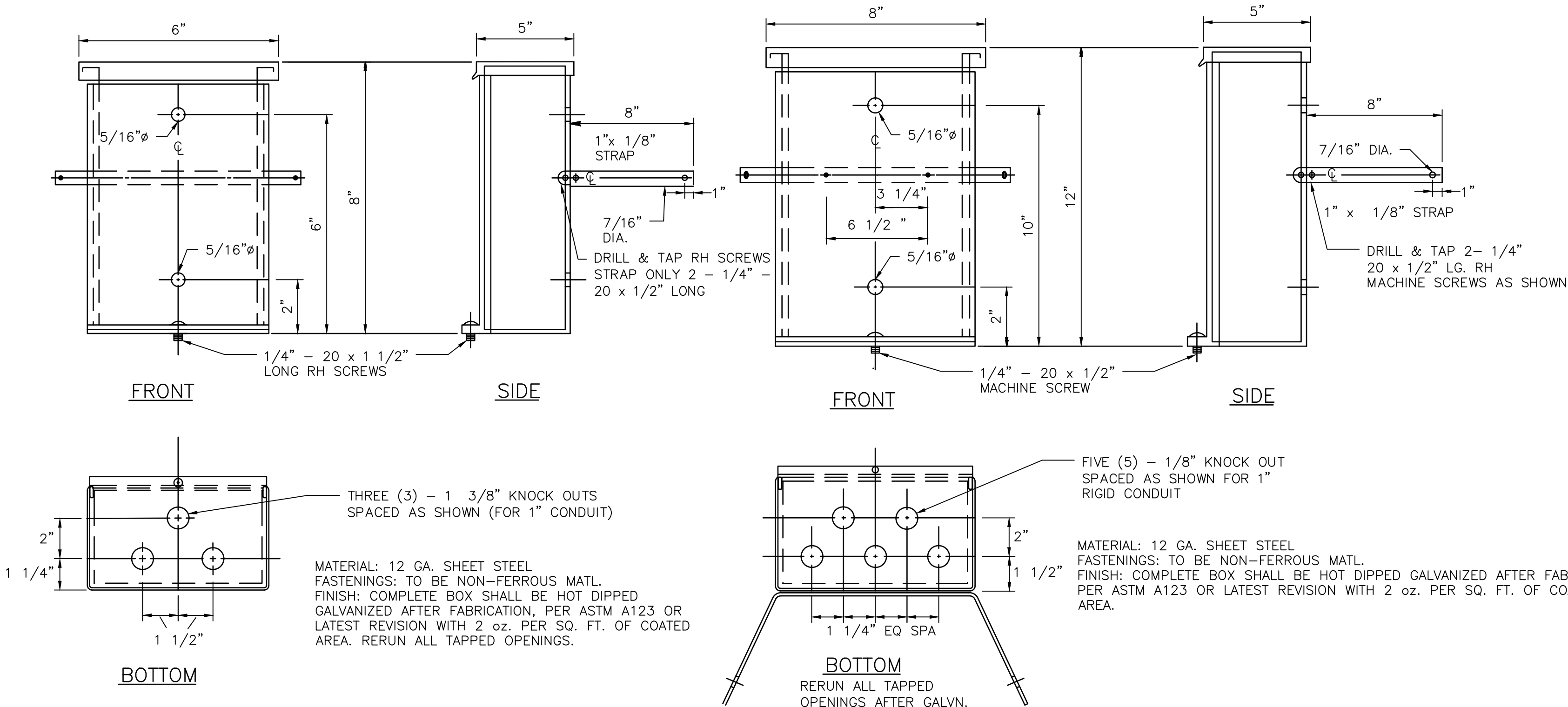


DISCLAIMER: THE USE OF THIS STANDARD IS GOVERNED BY THE TEXAS ENGINEERING PRACTICE ACT. THE DESIGN REQUIREMENTS ON THIS STANDARD DO NOT PURPORT TO ADDRESS ALL OF THE SAFETY CONCERNS ASSOCIATED WITH THEIR USE. THE ENGINEER OF RECORD (EOR) IS TO REVIEW THESE DESIGN REQUIREMENTS AND BY AUTHORIZING THEIR USE, ACCEPTS RESPONSIBILITY FOR THEIR APPLICABILITY, ADEQUACY AND SAFETY. NO WARRANTY OF ANY KIND IS MADE BY THE CITY OF HOUSTON FOR ANY PURPOSES WHATSOEVER. THE CITY OF HOUSTON ASSUMES NO RESPONSIBILITY FOR INCORRECT RESULTS OR DAMAGES RESULTING FROM ITS USE.



**NOTES:**  
CONTRACTOR SHALL TRIM TREES AND APPLY WOOD PRESERVATIVE AS DIRECTED BY ENGINEER AND/OR APPROVED CITY OF HOUSTON REPRESENTATIVE.

APPROVED BY: <div>DocuSigned by: <b>Sulail Kanwar</b> BEF9B0C641F5478...</div>	APPROVED BY: <div>DocuSigned by: <b>KATHIE NAUFEN</b> 95A29EFD475B4C0...</div>
CITY ENGINEER	CITY TRAFFIC ENGINEER
APPROVED BY: <div>DocuSigned by: <b>Carl Halladay</b> A98C410B72B34E3</div>	
DIRECTOR OF HOUSTON PUBLIC WORKS	
EFF DATE: NOV-27-2023	DWG NO: 02893-04
<b>CITY OF HOUSTON</b> HOUSTON PUBLIC WORKS STANDARD	
HARDWARE INTERCONNECT DETAILS	
	FOR CITY OF HOUSTON USE ONLY
DRAWING SCALE	
NOT TO SCALE	