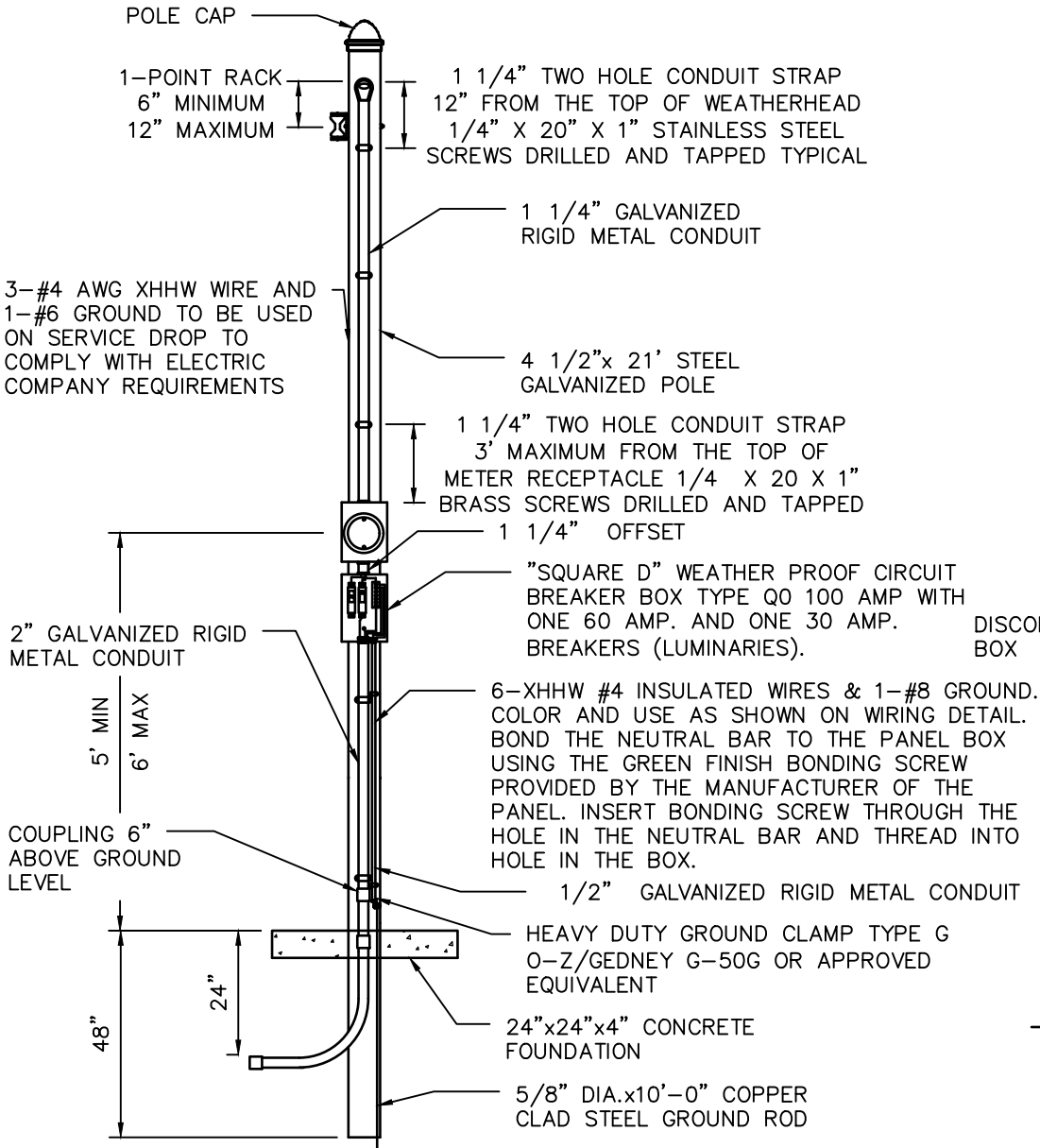


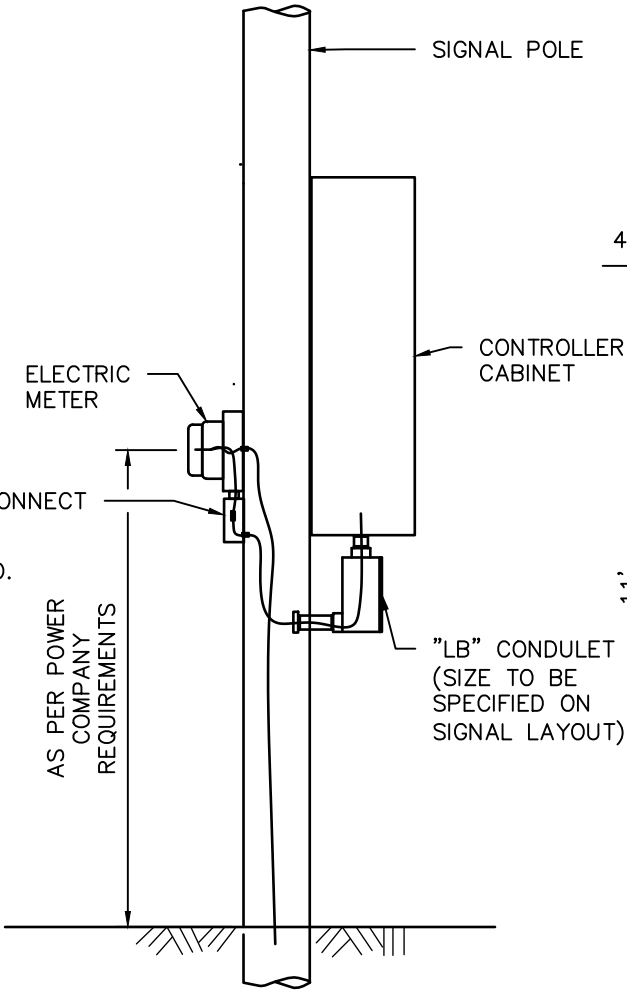
DISCLAIMER: THE USE OF THIS STANDARD IS GOVERNED BY THE TEXAS ENGINEERING PRACTICE ACT. THE DESIGN REQUIREMENTS ON THIS STANDARD DO NOT PURPORT TO ADDRESS ALL OF THE SAFETY CONCERNS ASSOCIATED WITH THEIR USE. THE ENGINEER OF RECORD (EOR) IS TO REVIEW THESE DESIGN REQUIREMENTS AND BY AUTHORIZING THEIR USE, ACCEPTS RESPONSIBILITY FOR THEIR APPLICABILITY, ADEQUACY AND SAFETY. NO WARRANTY OF ANY KIND IS MADE BY THE CITY OF HOUSTON FOR ANY PURPOSES WHATSOEVER. THE CITY OF HOUSTON ASSUMES NO RESPONSIBILITY FOR INCORRECT RESULTS OR DAMAGES RESULTING FROM ITS USE.

NOTES:

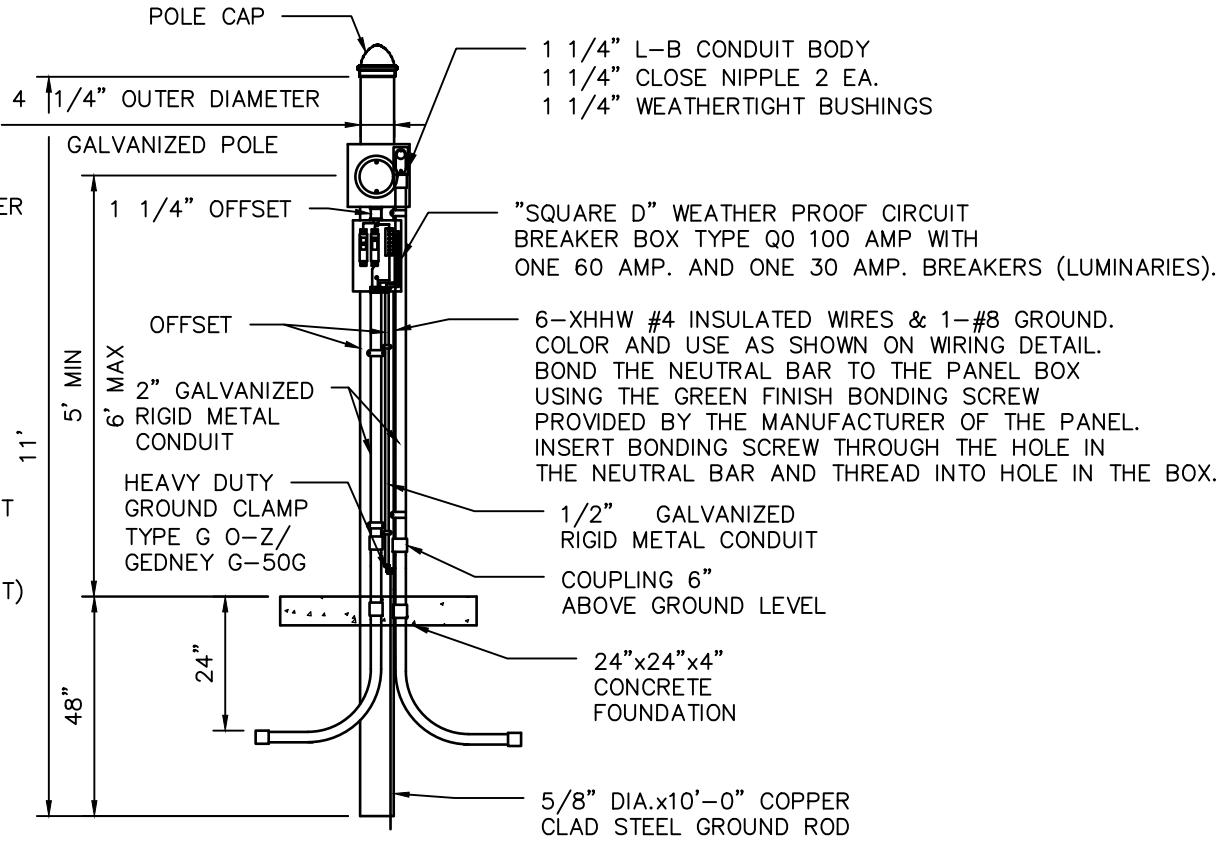
1. CLEARANCE FOR SERVICE ENTRANCE AND DROP CONDUCTORS 12 FT ABOVE FINISHED GRADE, SIDEWALKS, RESIDENTIAL DRIVEWAYS OR AREAS WHERE TRUCK TRAFFIC IS NOT ENCOUNTERED TRUCKS SHALL BE DEFINED AS ANY VEHICLE EXCEEDING 8 FT IN HEIGHT.
2. 18 FT. OVER NON-RESIDENTIAL DRIVEWAYS, PARKING LOTS, ALLEYS AND OTHER AREAS SUBJECT TO TRUCK TRAFFIC 22 FT. OVER PUBLIC STREETS AND ROADS.



METER POLE ASSEMBLY  
(AERIAL SERVICE)



POLE MOUNTED CONTROLLER  
& ELECTRIC METER DETAIL



METER POLE ASSEMBLY  
(UNDERGROUND SERVICE)

CITY OF HOUSTON  
HOUSTON PUBLIC WORKS STANDARD

METER LOOP

(SCALE: NOT TO SCALE)

APPROVED BY:

DocuSigned by:

Sulail Kanwar

9EF8B0C641F5478...

CITY ENGINEER

DocuSigned by:

KHANG NGUYEN

95A29EFD75B4CD...

CITY TRAFFIC ENGINEER

DocuSigned by:

Carol Haddock

A93C410B72B3453...

DIRECTOR OF HPW

EFF DATE: NOV-27-2023

DWG NO: 02893-03