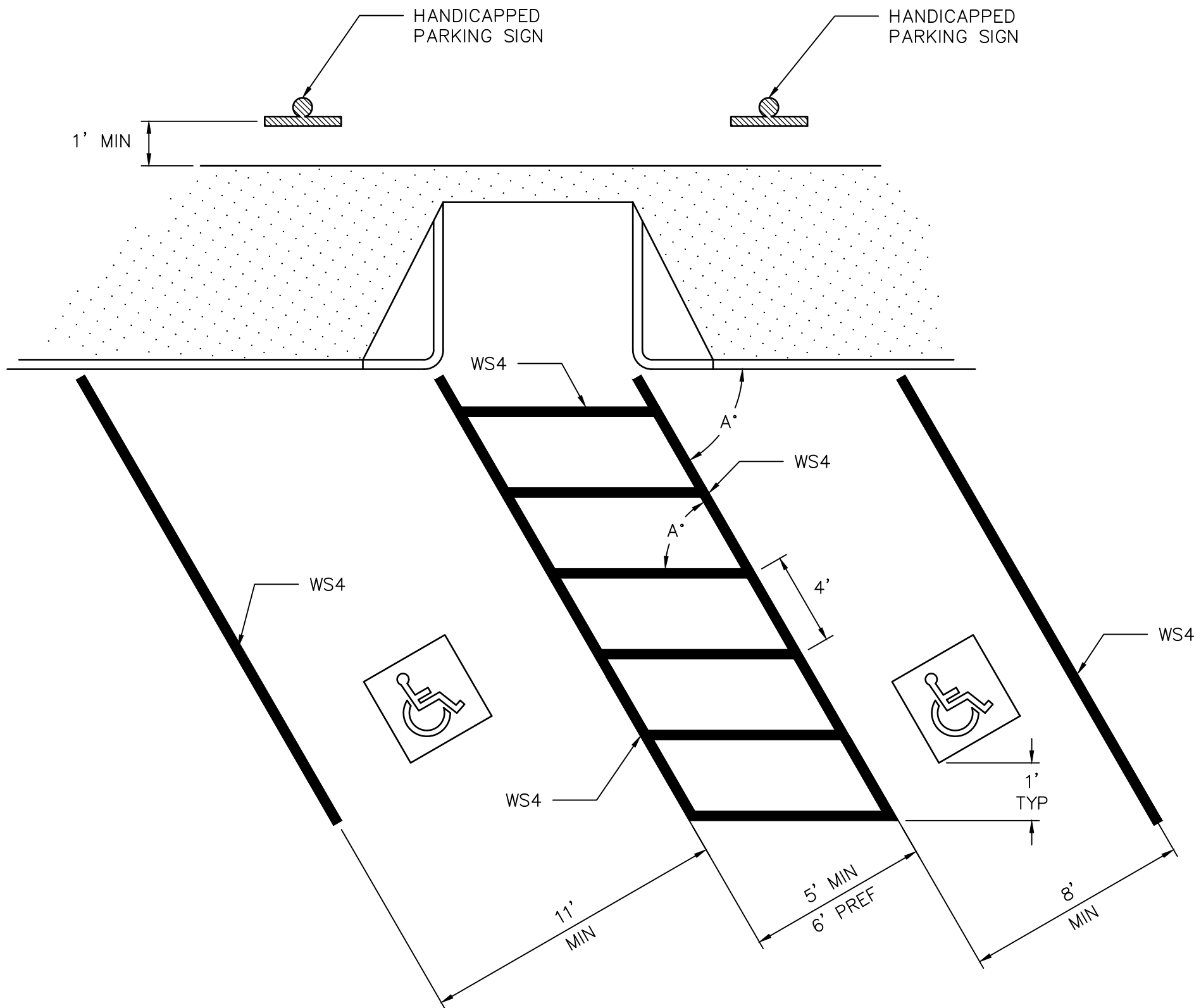


RAMP DETAILS ARE AS
SHOWN ELSEWHERE IN
THE PLANS.
REFER TO CITY OF HOUSTON
STANDARDS ON WHEELCHAIR
RAMP CRITERIA.

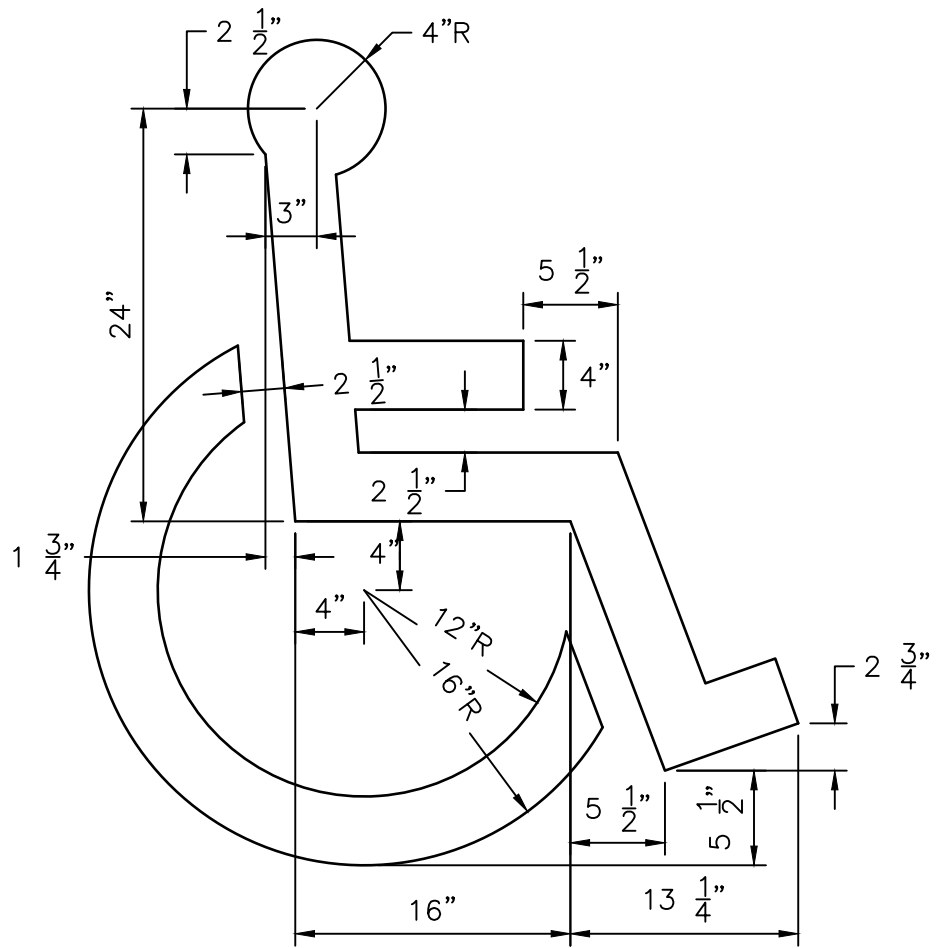


Technical drawing of a mechanical part with dimensions and labels. The part is shown in a side view with a 48" overall width and 48" overall height. Key dimensions include:

- Overall width: 48"
- Overall height: 48"
- Top left corner: 18" horizontal, 11" vertical.
- Top right corner: 24" vertical.
- Left side: 15" vertical, 17" vertical, 20" vertical, 21" vertical, 2" vertical.
- Right side: 17" horizontal, 13" horizontal, 10" horizontal, 15" vertical.
- Internal features:
 - 3"R (fillet)
 - 3" (radius)
 - 4" (width)
 - 2" (width)
 - 3" (width)
 - 9"R (fillet)
 - 12"R (fillet)
 - 14" (width)

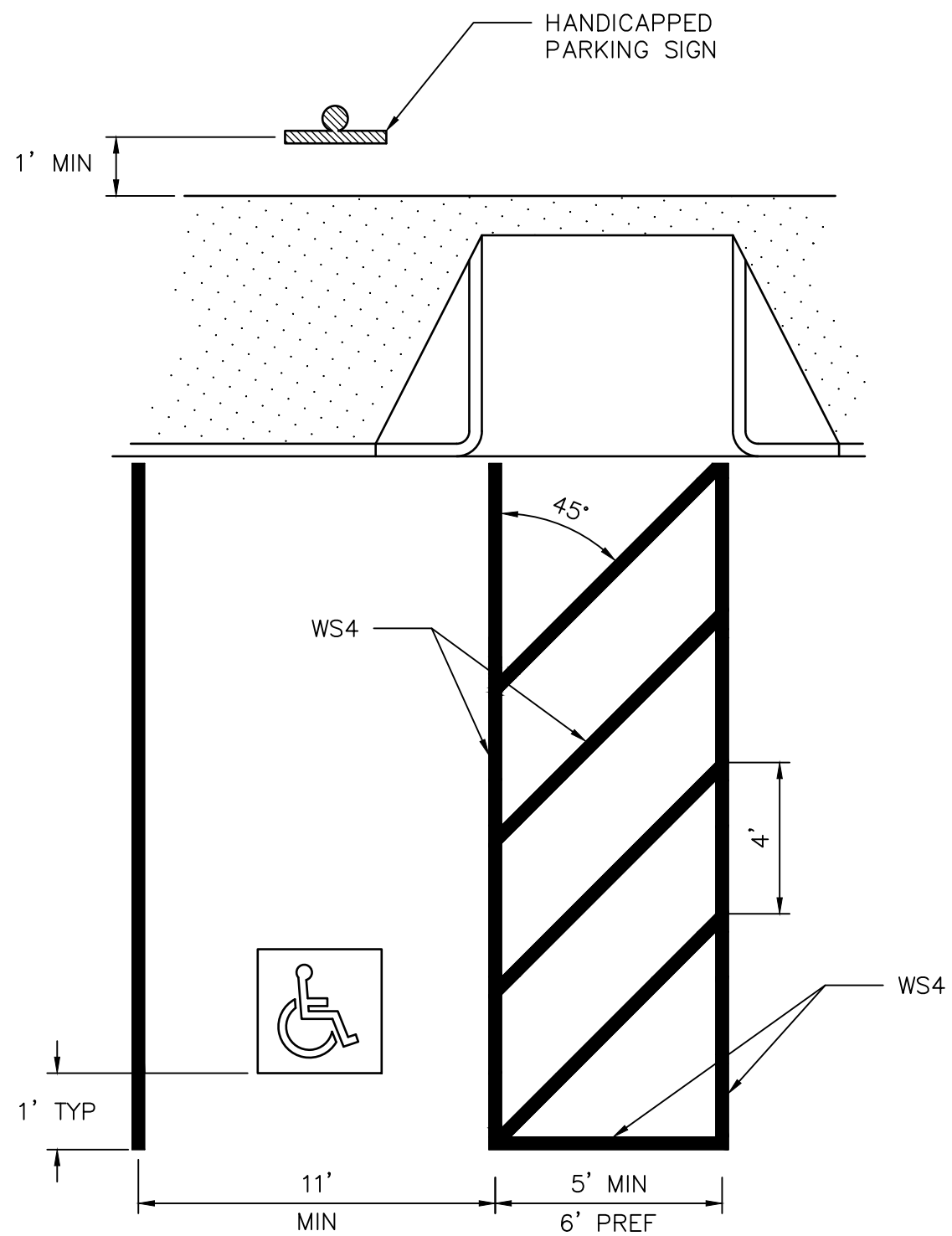
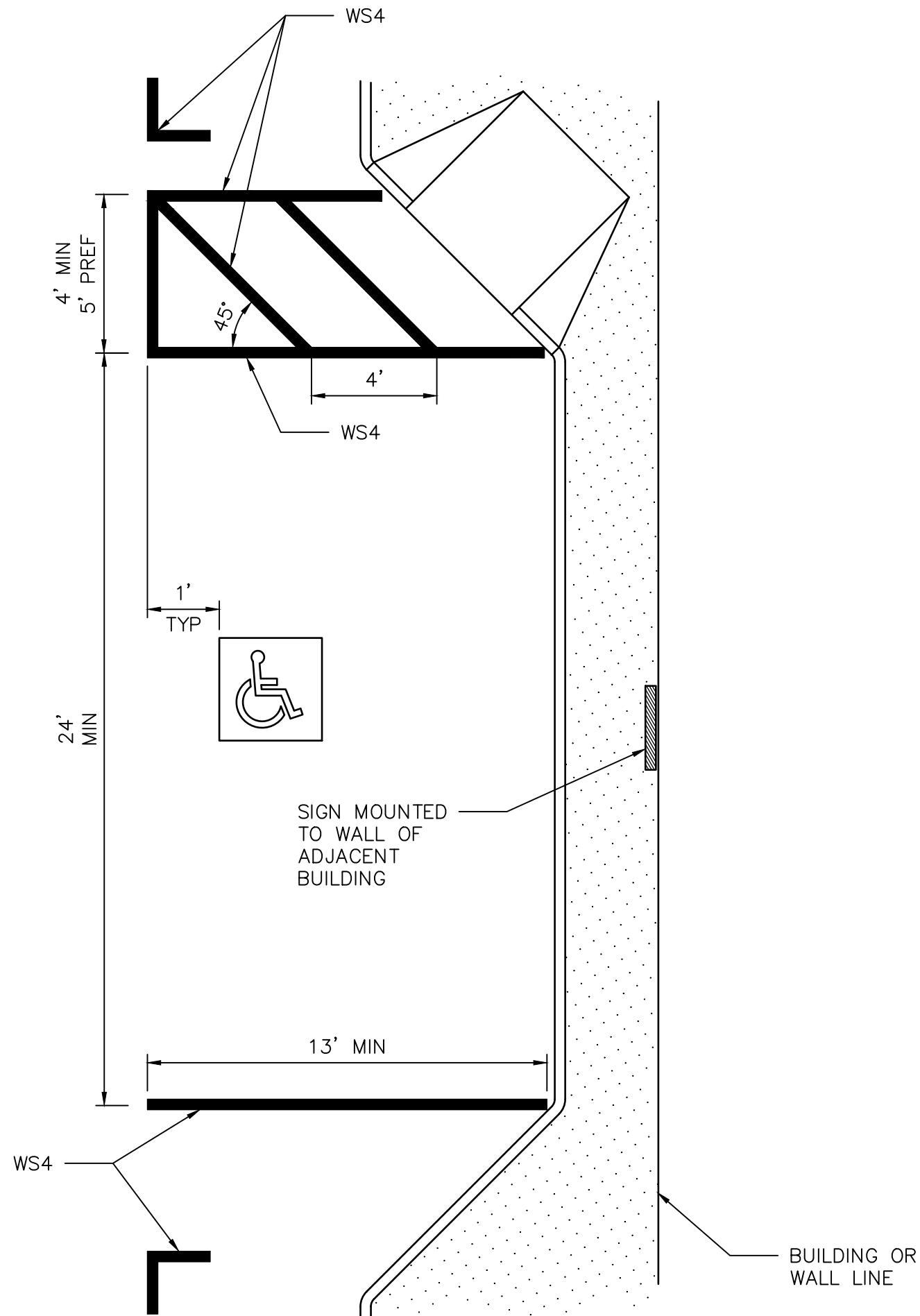
WITH
BACKGROUND

SYMBOL & BORDER: WHITE
BACKGROUND: BLUE



SYMBOL ONLY

SYMBOL: BLUE OR WHITE



- NOTES:**
1. ALL PARKING SPACE LIMIT LINES SHALL BE 4", WS4.
 2. AISLE MARKINGS SHOWN ARE EXAMPLES ONLY. OTHER METHODS TO INDICATE A NO PARKING AREA ARE ACCEPTABLE. AISLE MARKINGS SHALL BE WHITE.
 3. DIMENSIONS OF LIMIT LINES, AISLE MARKINGS, AND SYMBOL (WITH OR WITHOUT BACKGROUND) MAY VARY \pm 10%.
 4. PAVEMENT MARKING SYMBOLS (WITH BACKGROUND):
 - A) ARE REQUIRED UNLESS STATED ELSEWHERE IN THE PLANS,
 - B) SHOULD BE PLACED TOWARD THE FAR END OF THE PARKING SPACES SO AS TO BE VISIBLE TO MOTORISTS IN THE TRAVEL LANE,
 - C) MAY BE PAINTED OR PREFABRICATED MATERIAL, AND
 - D) SHALL BE 30"x 30" MINIMUM.
 5. WITH APPROVAL OF THE CITY TRAFFIC ENGINEER, PREFABRICATED PAVEMENT MARKING SYMBOLS WITH BACKGROUND OF OTHER DIMENSIONS EXCEEDING THE 30"x 30" MINIMUM MAY BE USED. ALTERNATIVE DESIGNS SHALL INCLUDE A PROPORTION SIZED SYMBOL OF ACCESSIBILITY, AND SHALL CONFORM TO THE ILLUSTRATED COLORS FOR BACKGROUND, SYMBOL AND BORDER.
 5. ALL SLOPE IN AND AROUND EXPECTED WHEELCHAIR PATH SHALL NOT EXCEED ADA REQUIREMENTS FOR WHEELCHAIR RAMPS.
 7. REFER TO CITY OF HOUSTON TRAFFIC SIGN STANDARDS FOR HANDICAPPED PARKING SIGN DETAILS.
 8. NOTE THAT ANGLED PARKING ON PUBLIC ROADWAYS REQUIRE CITY COUNCIL APPROVAL BEFORE IMPLEMENTATION.

APPROVED BY: <div style="border: 1px solid black; padding: 5px; margin-top: 10px;"> DocuSigned by: <i>Sudail Karmwar</i> <small>9EF8B5C041F547B...</small> </div> <div style="border: 1px solid black; padding: 5px; margin-top: 10px; text-align: center;"> CITY ENGINEER </div>	APPROVED BY: <div style="border: 1px solid black; padding: 5px; margin-top: 10px;"> DocuSigned by: <i>KARING NGUYEN</i> <small>95A29EFDA7584CD...</small> </div> <div style="border: 1px solid black; padding: 5px; margin-top: 10px; text-align: center;"> CITY TRAFFIC ENGINEER </div>
APPROVED BY: <div style="border: 1px solid black; padding: 5px; margin-top: 10px;"> DocuSigned by: <i>Carl Haddock</i> <small>A83CA10B72B3453...</small> </div> <div style="border: 1px solid black; padding: 5px; margin-top: 10px; text-align: center;"> DIRECTOR OF HOUSTON PUBLIC WORKS </div>	
EFF DATE: NOV-27-2023	DWG NO: 02760-07
<h1 style="margin: 0;">CITY OF HOUSTON</h1> <h2 style="margin: 0;">HOUSTON PUBLIC WORKS STANDARD</h2>	
<h1 style="margin: 0;">PAVEMENT MARKINGS FOR ACCESSIBLE PARKING</h1>	
	FOR CITY OF HOUSTON USE ONLY
DRAWING SCALE	
NOT TO SCALE	