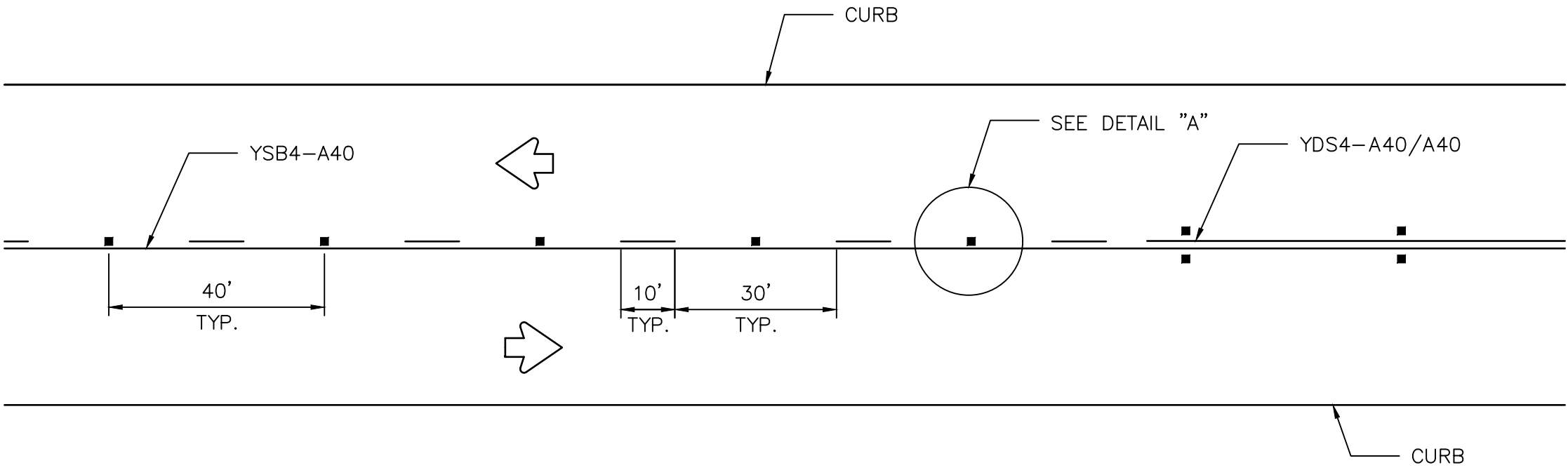


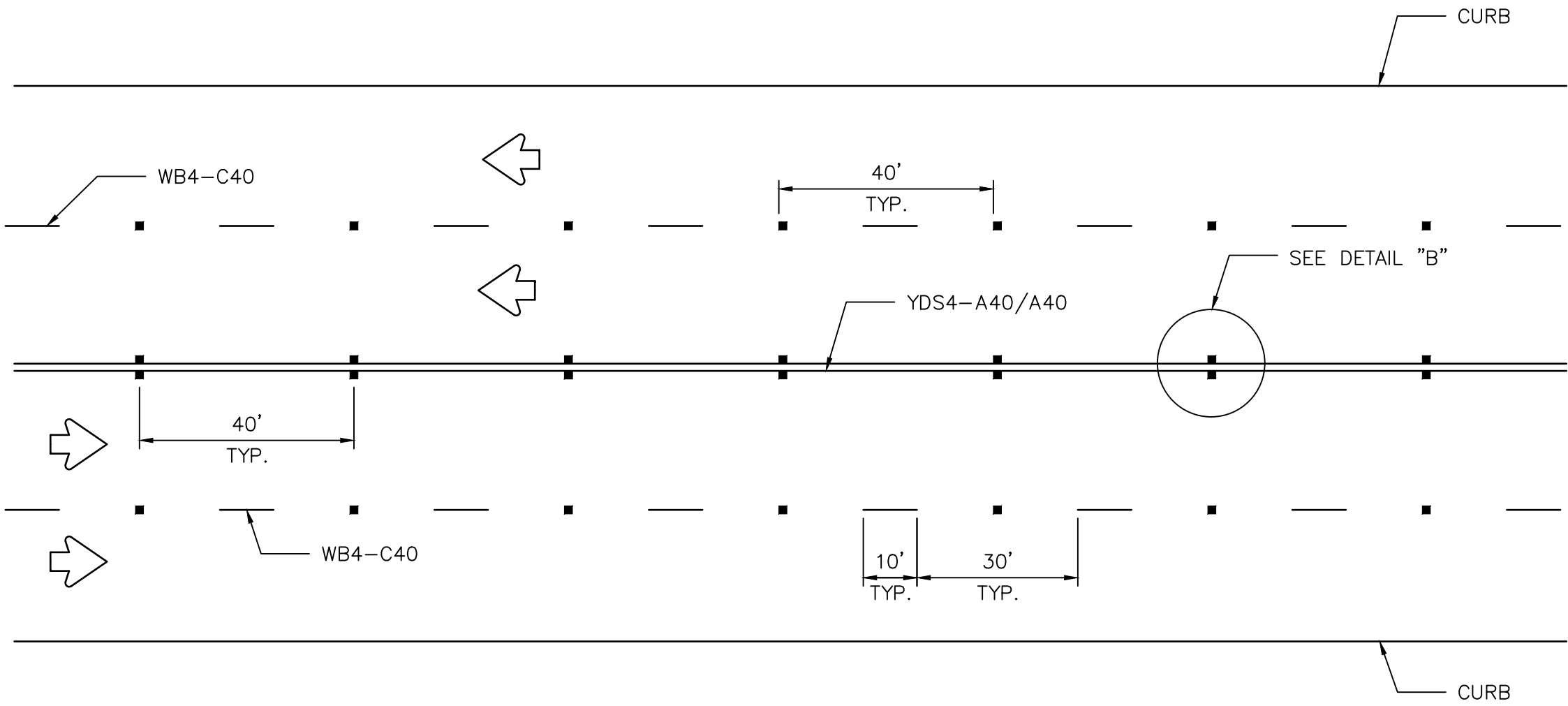
DISCLAIMER: THE USE OF THIS STANDARD IS GOVERNED BY THE TEXAS ENGINEERING PRACTICE ACT. THE DESIGN REQUIREMENTS ON THIS STANDARD DO NOT PURPORT TO ADDRESS ALL OF THE SAFETY CONCERNS ASSOCIATED WITH THEIR USE. THE ENGINEER OF RECORD (EOR) IS TO REVIEW THESE DESIGN REQUIREMENTS AND BY AUTHORIZING THEIR USE, ACCEPTS RESPONSIBILITY FOR THEIR APPLICABILITY, ADEQUACY AND SAFETY. NO WARRANTY OF ANY KIND IS MADE BY THE CITY OF HOUSTON FOR ANY PURPOSES WHATSOEVER. THE CITY OF HOUSTON ASSUMES NO RESPONSIBILITY FOR INCORRECT RESULTS OR DAMAGES RESULTING FROM ITS USE.

CENTERLINE & FOR ALL TWO LANE STREETS
WITH PASSING ZONE

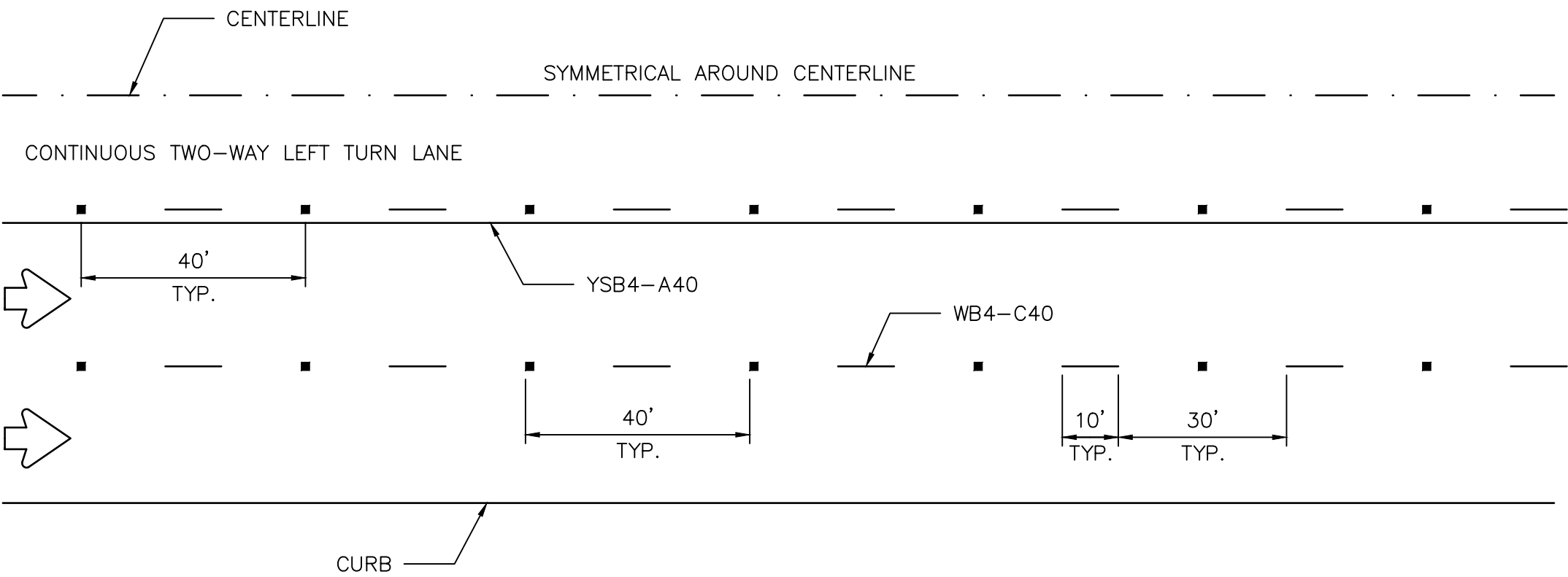


CENTERLINE & LANE LINES
FOR FOUR LANE TWO-WAY STREETS

RRPM TYPE C, CLEAR FACE TOWARD NORMAL TRAFFIC, SHALL BE PLACED ON 40-FOOT CENTERS.

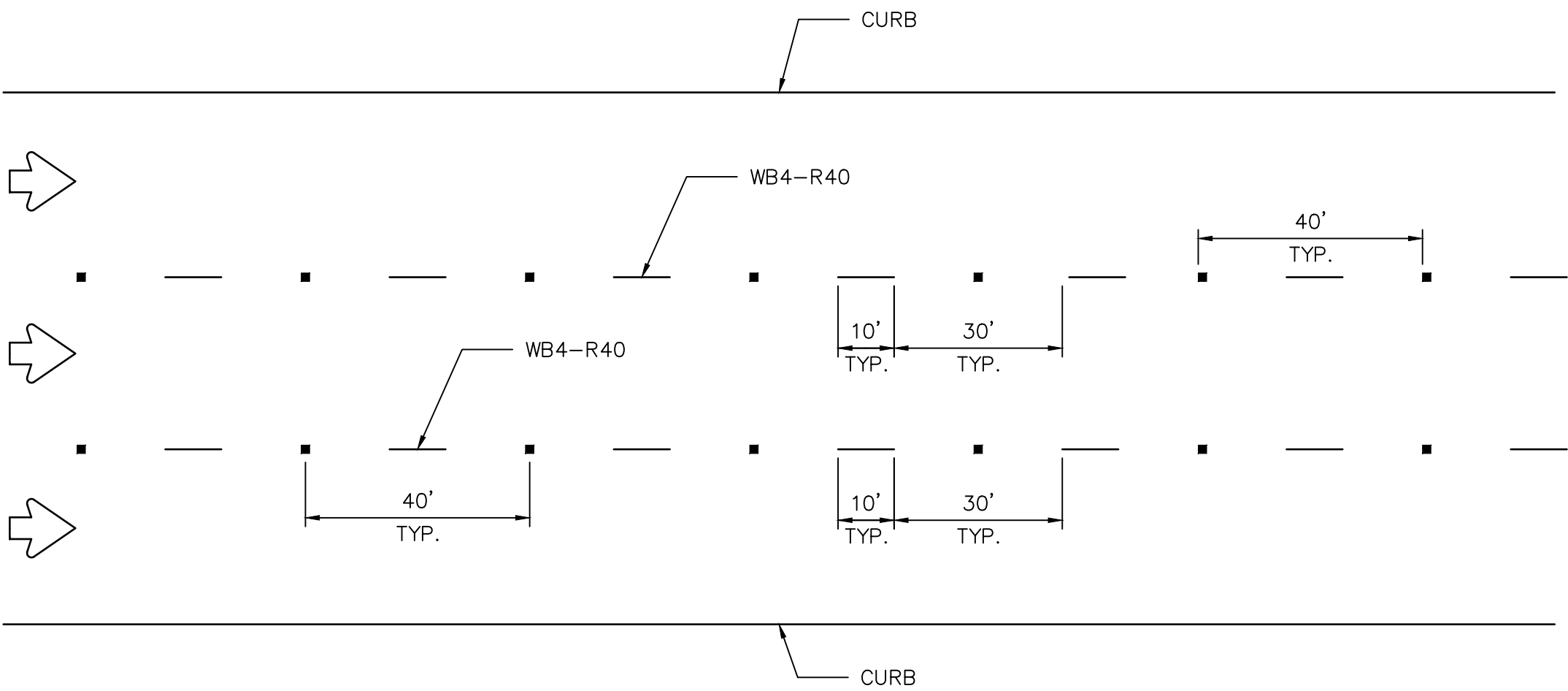


CENTERLINE & LANE LINES
FOR TWO-WAY LEFT TURN LANE



LANE LINES FOR ONE-WAY MULTILANE STREET

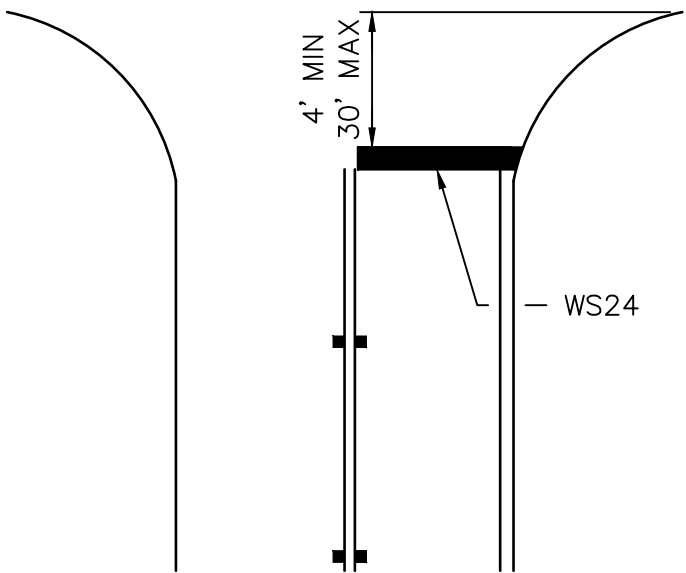
RRPM TYPE R SHALL HAVE CLEAR FACE TOWARD NORMAL TRAFFIC AND RED FACE TOWARD WRONG-WAY TRAFFIC.



GENERAL NOTES:

1. EDGE LINE ADJACENT TO CURB AND GUTTER IS NOT REQUIRED IN ALL CASES, HOWEVER SHALL BE PLACED AS DIRECTED BY CITY TRAFFIC ENGINEER.
2. THE TRAVELED WAY INCLUDES ONLY THAT PORTION OF THE ROADWAY USED FOR VEHICULAR TRAVEL AND NOT THE PARKING LANES, SIDEWALKS, BERMS AND SHOULDERS. THE TRAVELED WAYS SHALL BE MEASURED FROM THE INSIDE OF EDGE LINE TO INSIDE OF EDGE LINE OF A TWO LANE ROADWAY.
3. ALL RAISED PAVEMENT MARKERS PLACED IN BROKEN LINES SHALL BE PLACED IN LINE WITH AND MIDWAY BETWEEN THE STRIPES.
4. ON CONCRETE PAVEMENTS THE RAISED PAVEMENT MARKERS SHOULD BE PLACED TO ONE SIDE OF THE LONGITUDINAL JOINTS.
5. ALL PAVEMENT MARKING MATERIAL SHALL MEET THE REQUIRED MATERIAL SPECIFICATIONS AS SPECIFIED BY CITY OF HOUSTON STANDARD SPECIFICATIONS.

GUIDE FOR PLACEMENT OF STOP LINES
& CENTERLINE



APPROVED BY: <div>DocuSigned by: Sulail Kanwar BEF8B0C0641F5478...</div>	APPROVED BY: <div>DocuSigned by: KHANG NGUYEN 95A28EFD475B4C0...</div>
CITY ENGINEER	CITY TRAFFIC ENGINEER
APPROVED BY: <div>DocuSigned by: Carl Halladay A58C410B72B3453</div>	
DIRECTOR OF HOUSTON PUBLIC WORKS	
EFF DATE: NOV-27-2023	DWG NO: 02760-05

CITY OF HOUSTON
HOUSTON PUBLIC WORKS STANDARD

STANDARD PAVEMENT MARKINGS WITH
REFLECTIVE RAISED PAVEMENT
MARKERS FOR POSITION GUIDANCE

	FOR CITY OF HOUSTON USE ONLY
DRAWING SCALE	
NOT TO SCALE	

REFLECTIVE RAISED PAVEMENT MARKERS

