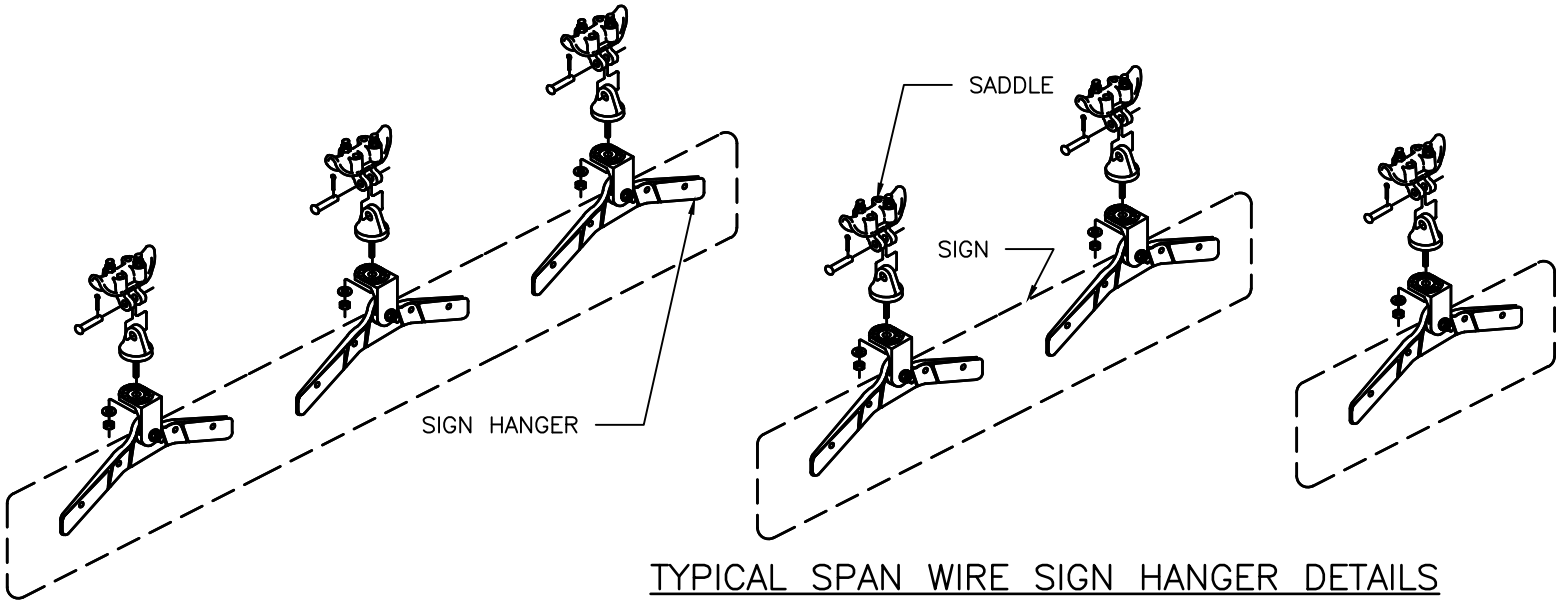
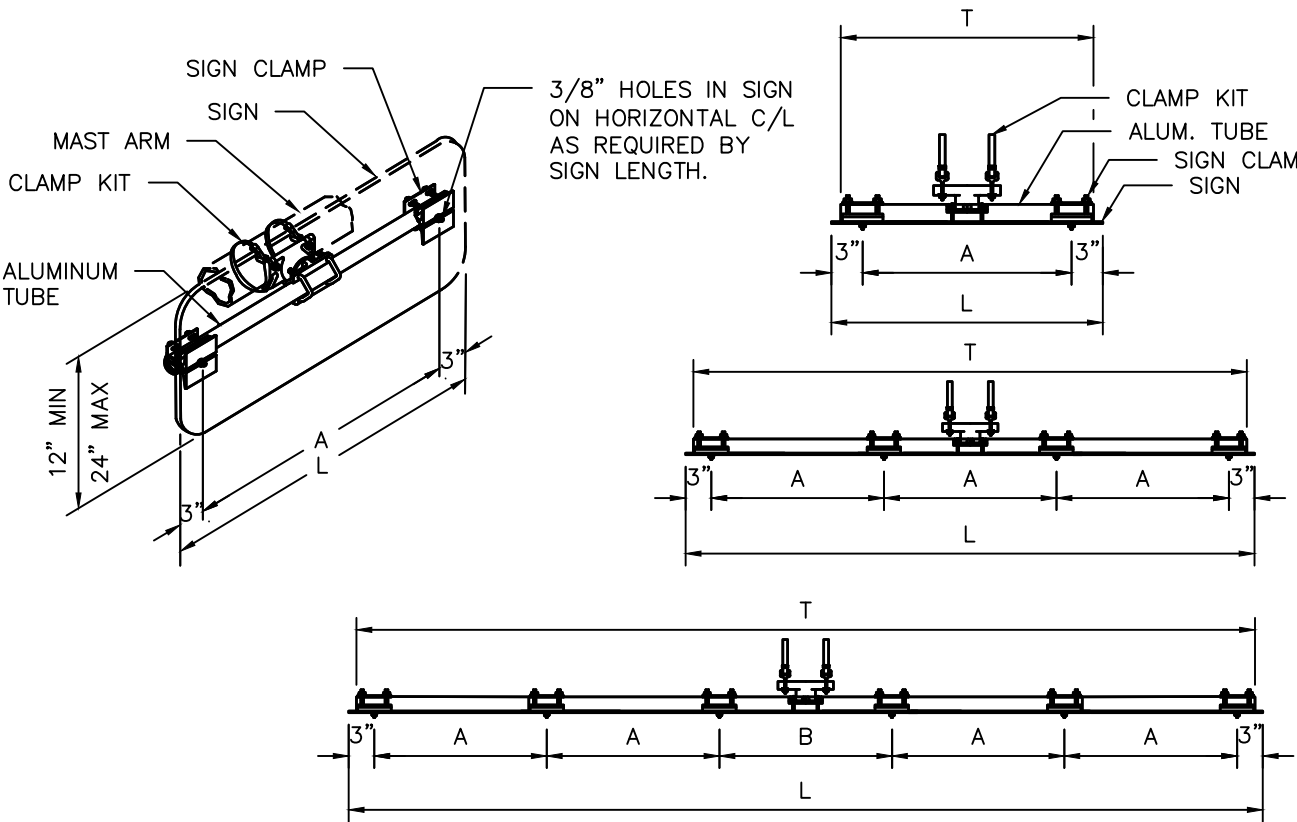


DISCLAIMER: THE USE OF THIS STANDARD IS GOVERNED BY THE TEXAS ENGINEERING PRACTICE ACT. THE DESIGN REQUIREMENTS ON THIS STANDARD DO NOT PURPORT TO ADDRESS ALL OF THE SAFETY CONCERNS ASSOCIATED WITH THEIR USE. THE ENGINEER OF RECORD (EOR) IS TO REVIEW THESE DESIGN REQUIREMENTS AND BY AUTHORIZING THEIR USE, ACCEPTS RESPONSIBILITY FOR THEIR APPLICABILITY, ADEQUACY AND SAFETY. NO WARRANTY OF ANY KIND IS MADE BY THE CITY OF HOUSTON FOR ANY PURPOSES WHATSOEVER. THE CITY OF HOUSTON ASSUMES NO RESPONSIBILITY FOR INCORRECT RESULTS OR DAMAGES RESULTING FROM ITS USE.



NOTES:

1. CONTRACTOR SHALL USE PELCO PARTS OR AN APPROVED EQUAL.
2. CONTRACTOR SHALL FURNISH ALL HARDWARE FOR A COMPLETE INSTALLATION.
3. THE 90 DEGREE SPAN WIRE CLAMPS (SADDLES) ARE ATTACHED TO TETHERS (SWAY CABLES).
4. CONTRACTOR SHALL FURNISH ONE (1) ADJUSTABLE FREE SWINGING SIGN HANGER PER STREET NAME SIGN SMALLER THAN 3'-0". SIGNS 3'-0" TO 6'-0" REQUIRE TWO (2) HANGERS. SIGNS LARGER THAN 6'-0" REQUIRE THREE (3) HANGERS.
5. SEE SIGN MOUNTING SERIES FOR STREET NAME SIGN DETAILS.



TYPICAL MAST ARM SIGN MOUNT DETAILS

SIGNS (1'-6" TO 3'-0" LONG)

SIGN LENGTH (L)	TUBE LENGTH (T)	A
1'-6"	16"	12"
2'-0"	22"	18"
2'-6"	28"	24"
3'-0"	34"	30"

MAXIMUM SIGN HEIGHT: 48"

SIGNS (3'-6" TO 8'-0" LONG)

SIGN LENGTH (L)	TUBE LENGTH (T)	A
3'-6"	40"	12"
4'-0"	46"	14"
4'-6"	52"	16"
5'-0"	58"	18"
5'-6"	64"	20"
6'-0"	70"	22"
6'-6"	76"	24"
7'-0"	82"	26"
7'-6"	88"	28"
8'-0"	94"	30"

MAXIMUM SIGN HEIGHT: 24"

SIGNS (8'-6" TO 10'-0" LONG)

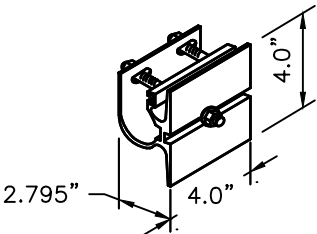
SIGN LENGTH (L)	TUBE LENGTH (T)	A	B
8'-6"	100"	19"	20"
9'-0"	106"	20"	22"
9'-6"	112"	21"	24"
10'-0"	118"	22"	26"

MAXIMUM SIGN HEIGHT: 16"

SIGN SQUARE FOOTAGE NOT TO EXCEED ROTATIONAL RESISTANCE CAPACITY DEFINED BY MOUNTING HARDWARE MANUFACTURER.



GUSSETED TUBE CROSS SECTION



SIGN CLAMP DETAIL

CITY OF HOUSTON
HOUSTON PUBLIC WORKS STANDARD

OVERHEAD STREET NAME
SIGN MOUNTING DETAILS

(SCALE: NOT TO SCALE)

APPROVED BY:

DocuSigned by:
Suhail Kanwar
9EF8B0C641F5478...
CITY ENGINEER
DocuSigned by:
Khang Nguyen
95A29EFD75B4CD...
CITY TRAFFIC ENGINEER

DocuSigned by:
Carol Haddock
A93C410B72B3453...
DIRECTOR OF HPW