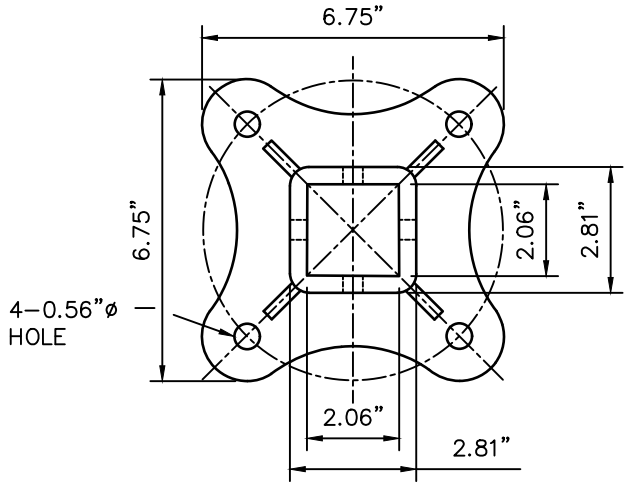
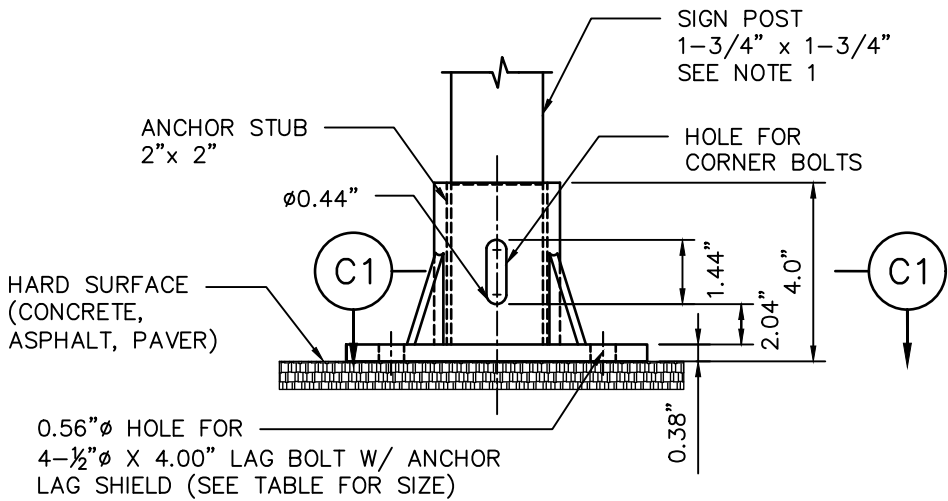


DISCLAIMER: THE USE OF THIS STANDARD IS GOVERNED BY THE TEXAS ENGINEERING PRACTICE ACT. THE DESIGN REQUIREMENTS ON THIS STANDARD DO NOT PURPORT TO ADDRESS ALL OF THE SAFETY CONCERNS ASSOCIATED WITH THEIR USE. THE ENGINEER OF RECORD (EOR) IS TO REVIEW THESE DESIGN REQUIREMENTS AND BY AUTHORIZING THEIR USE, ACCEPTS RESPONSIBILITY FOR THEIR APPLICABILITY, ADEQUACY AND SAFETY. NO WARRANTY OF ANY KIND IS MADE BY THE CITY OF HOUSTON FOR ANY PURPOSES WHATSOEVER. THE CITY OF HOUSTON ASSUMES NO RESPONSIBILITY FOR INCORRECT RESULTS OR DAMAGES RESULTING FROM ITS USE.

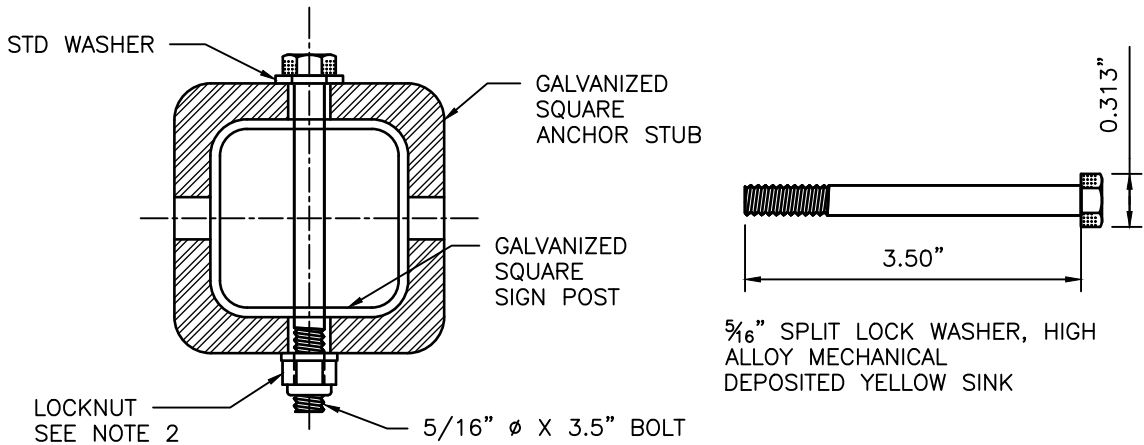


TOP VIEW

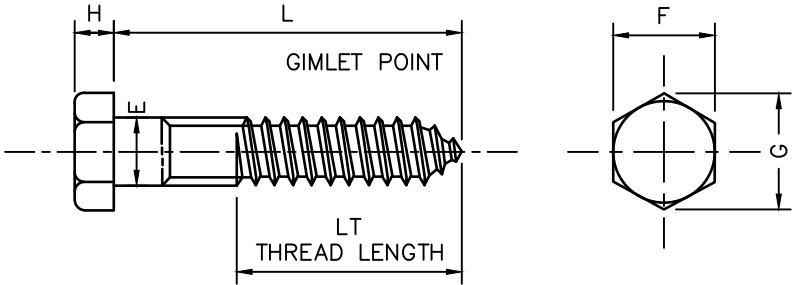


SIDE VIEW

TYPICAL HARD SURFACE INSTALLATION GALVANIZED SIGN BASE



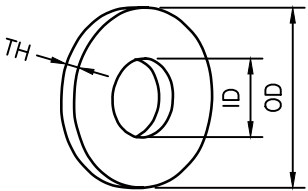
SECTION C1
CORNER BOLT



	E		F		G		H		L	LT
DIAMETER	BODY DIAMETER		WIDTH ACROSS FLATS		WIDTH ACROSS CORNERS		HEIGHT		LENGTH	THREAD LENGTH
	MAX	MIN	MAX	MIN	MAX	MIN	MAX	MIN		
1/2"	0.515"	0.482"	0.750"	0.725"	0.866"	0.826"	0.364"	0.302"	4.00"	3.84"

MATERIAL:PER A307 GRADE A
COATING: HOT DIP ZINC PER ASTM F2329 OR IN ACCORDANCE WITH CLASS C OF ASTM A153 AND CLASS D FOR 3/8" DIAMETER AND LESS

4" HEX LAG SCREWS, HOT DIPPED GALVANIZED

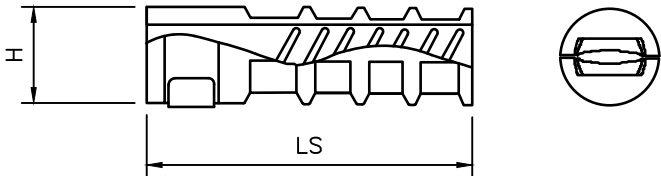


SAE FLAT WASHERS

SIZE	ID		OD			THICKNESS — TH		
	BASIC	TOLERANCE	BASIC	TOLERANCE		BASIC	MAX	MIN
		PLUS MINUS		PLUS MINUS	MINUS			
1/2"	0.531	0.015" 0.005"	1.062"	0.030" 0.007"	0.007"	0.95"	0.121"	0.74"

DIMENSIONS: ASME B18.21.1, TYPE A PLAIN WASHERS
MATERIAL: CARBON STEEL
FINISH: Fe/Zn 3AT PER ASTM F1941

1/2" FLAT WASHERS, LOW CARBON, SAE, ZINC PLATED



TH	LS	H	L
LAG THREAD SIZE	LENGTH OF SHIELD NOMINAL	DRILLED HOLE SIZE	BOLT LENGTH REQ
1/2"	3.00"	0.75"	4.00"

ANCHOR LAG SHIELD — ZINC ALLOY

NOTES:

1. REFER TO COH STD DWG 01554-01 FOR SIGN AND POST REQUIREMENTS.
2. REFER TO DETAIL "C5" ON COH STD DWG 01554-01 FOR NUT AND BOLT REQUIREMENTS.

BASE PLATE NOTES:

1. MATERIAL: ASTM A-536 GRADE 65-45-12 DUCTILE IRON
2. HOT DIP GALVANIZE PER ASTM A-153
3. ALL DIMENSIONS ARE IN INCHES

CITY OF HOUSTON
HOUSTON PUBLIC WORKS STANDARD

SIGN BASE
HARD SURFACE
MOUNTING DETAILS
(SCALE: NOT TO SCALE)

APPROVED BY:

DocuSigned by:
Suhail Kanwar
9EF8B0C641F5478...
CITY ENGINEER
DocuSigned by:
KHANG NGUYEN
95A29EFD75B4CD...
CITY TRAFFIC ENGINEER

DocuSigned by:
Carol Haddock
A93C410B72B3453...
DIRECTOR OF HPW

EFF DATE: NOV-27-2023 DWG NO: 01554-02