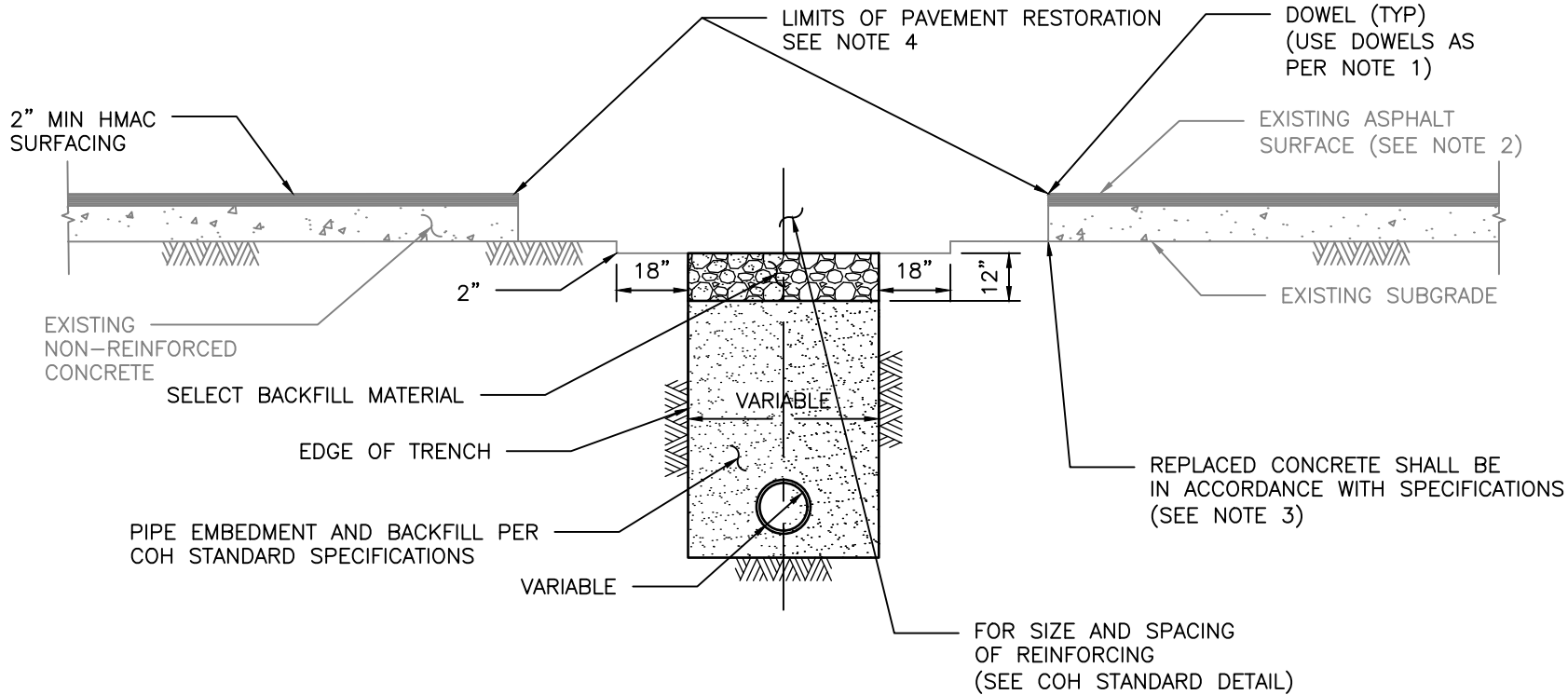
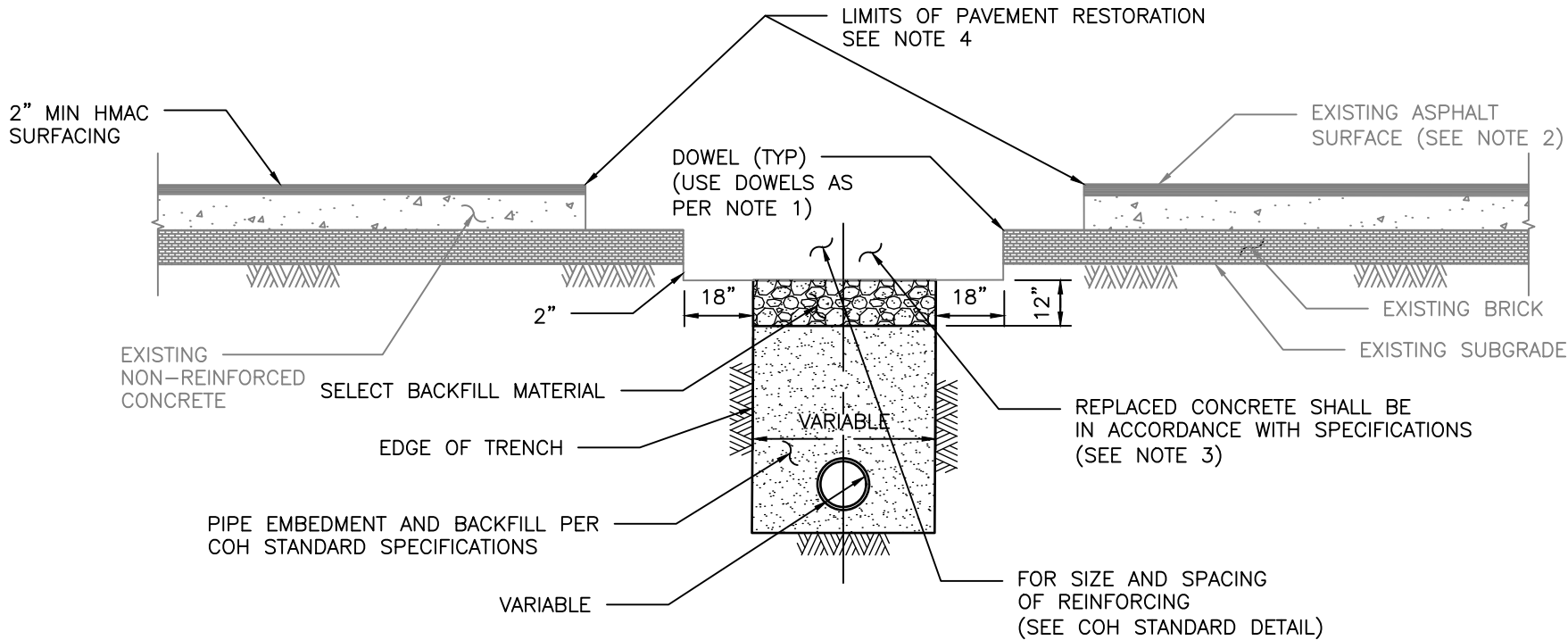


DISCLAIMER:
THE USE OF THIS STANDARD IS GOVERNED BY THE TEXAS ENGINEERING PRACTICE ACT. THE DESIGN REQUIREMENTS ON THIS STANDARD DO NOT PURPORT TO ADDRESS ALL OF THE SAFETY CONCERNS ASSOCIATED WITH THEIR USE. THE ENGINEER OF RECORD (EOR) IS TO REVIEW THESE DESIGN REQUIREMENTS AND BY AUTHORIZING THEIR USE, ACCEPTS RESPONSIBILITY FOR THEIR APPLICABILITY, ADEQUACY AND SAFETY. NO WARRANTY OF ANY KIND IS MADE BY THE CITY OF HOUSTON FOR ANY PURPOSES WHATSOEVER. THE CITY OF HOUSTON ASSUMES NO RESPONSIBILITY FOR INCORRECT RESULTS OR DAMAGES RESULTING FROM ITS USE.



ELEVATION C
REPAIR OF NON-REINFORCED CONCRETE PAVEMENT



ELEVATION D
REPAIR OF NON-REINFORCED CONCRETE PAVEMENT WITH BRICK

NOTES:

1. EXPOSE 15" OF REINFORCING STEEL AT PROPOSED SAWED JOINT. IF NO REINFORCING STEEL EXISTS, USE HORIZONTAL DOWELS. HORIZONTAL DOWELS SHALL BE #6 BAR, 24" LONG, 24" C-C, DRILLED AND EMBEDDED 8" INTO THE CENTER OF THE EXISTING SLAB. WITH "PO ROC" OR EQUAL.
2. IF REINFORCED CONCRETE IS OVERLAYED REPLACE WITH SAME THICKNESS OF HMAC SURFACING.
3. REFER TO STANDARD DETAIL 02751-01 FOR REINFORCING STEEL REQUIREMENT
4. REFER TO STANDARD DETAILS 02951-01 THROUGH 03 FOR PAVEMENT RESTORATION LIMITS.

CITY OF HOUSTON HOUSTON PUBLIC WORKS STANDARD	
PAVEMENT REPAIR DETAIL FOR STREET CUTS (NON-REINFORCED CONCRETE & BRICK PAVEMENT) (SCALE: NOT TO SCALE)	
APPROVED BY:	
<div>DocuSigned by: <i>Suhail Kanwar</i> 9EF8B0C641F5478...</div> <div>CITY ENGINEER</div> <div>DocuSigned by: <i>Khang Nguyen</i> 95A29EFD0A75B4CD...</div> <div>CITY TRAFFIC ENGINEER</div>	<div>DocuSigned by: <i>Carol Haddock</i> A93C410B72B3453...</div> <div>DIRECTOR OF HPW</div>
EFF DATE: NOV-27-2023	DWG NO: 02951-05