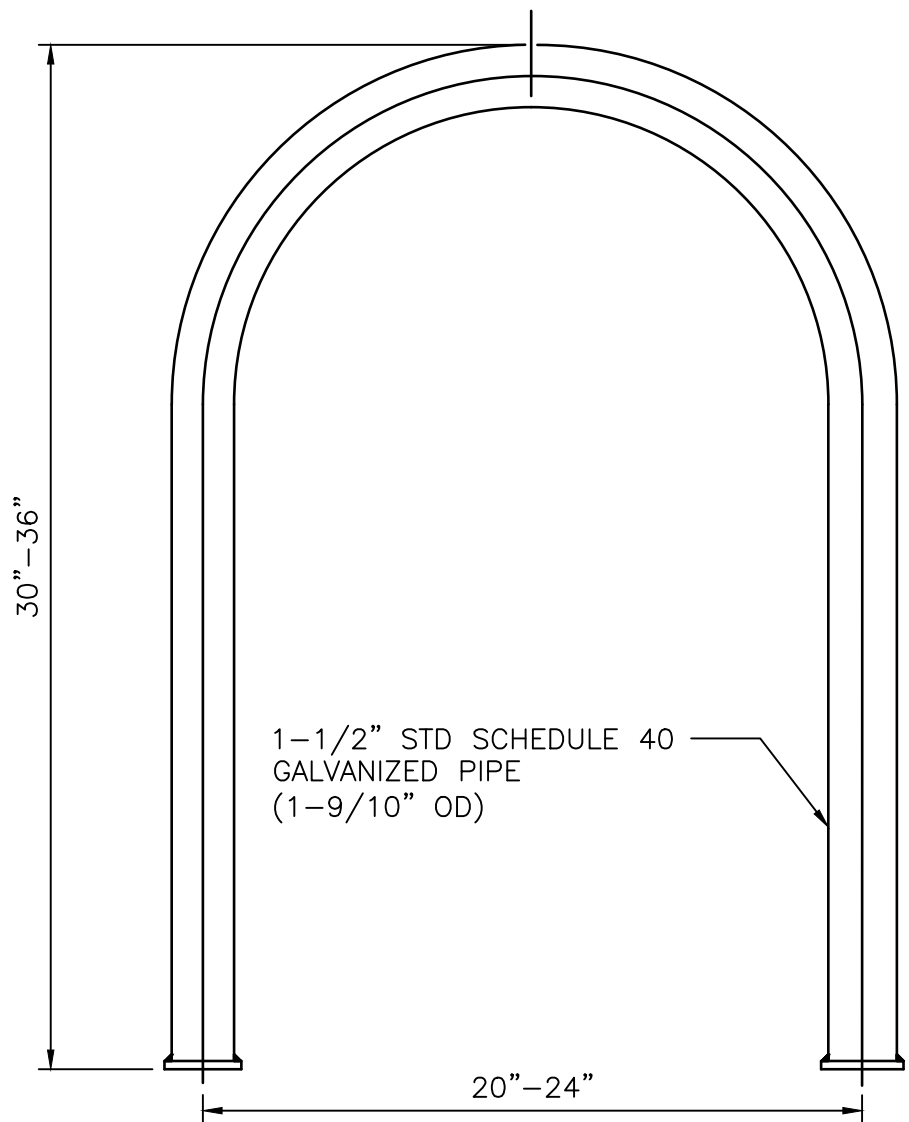
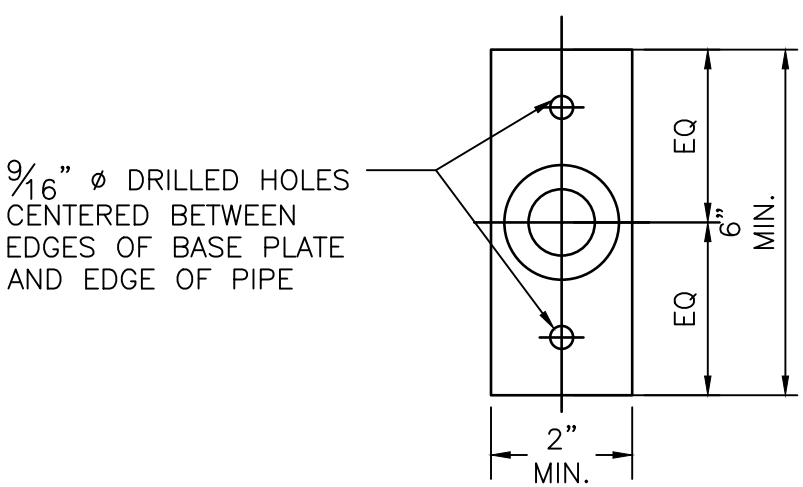


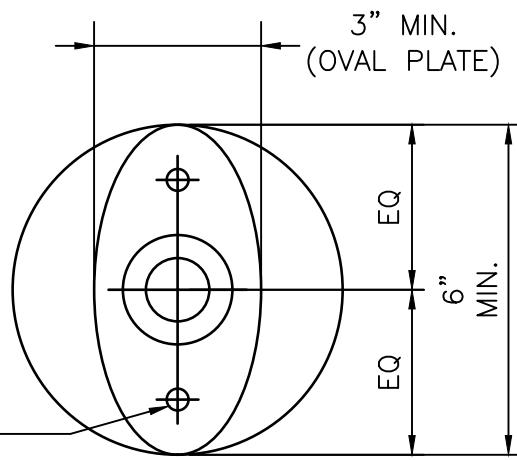
DISCLAIMER: THE USE OF THIS STANDARD IS GOVERNED BY THE TEXAS ENGINEERING PRACTICE ACT. THE DESIGN REQUIREMENTS ON THIS STANDARD DO NOT PURPORT TO ADDRESS ALL OF THE SAFETY CONCERNS ASSOCIATED WITH THE USE OF RECORD (EOR) IS TO REVIEW THESE DESIGN REQUIREMENTS AND BY AUTHORIZING THEIR USE, ACCEPTS RESPONSIBILITY FOR THEIR APPLICABILITY, ADEQUACY AND SAFETY. NO WARRANTY OF ANY KIND IS MADE BY THE CITY OF HOUSTON FOR ANY PURPOSES WHATSOEVER. THE CITY OF HOUSTON ASSUMES NO RESPONSIBILITY FOR INCORRECT RESULTS OR DAMAGES RESULTING FROM ITS USE.



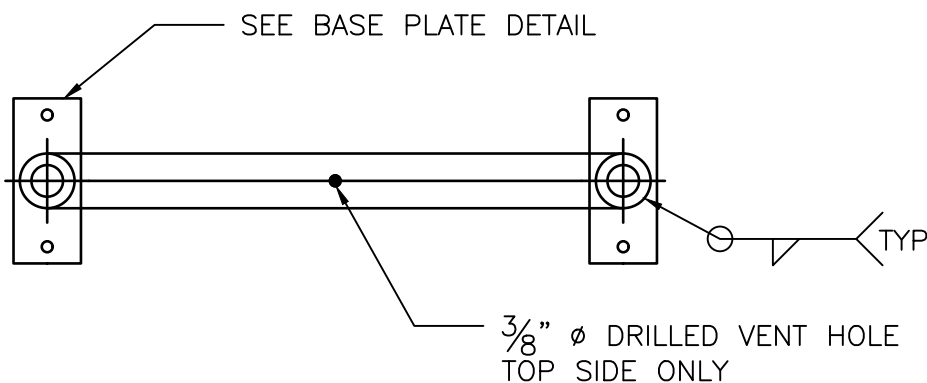
ELEVATION VIEW



STANDARD BASE PLATE
(RECTANGULAR)



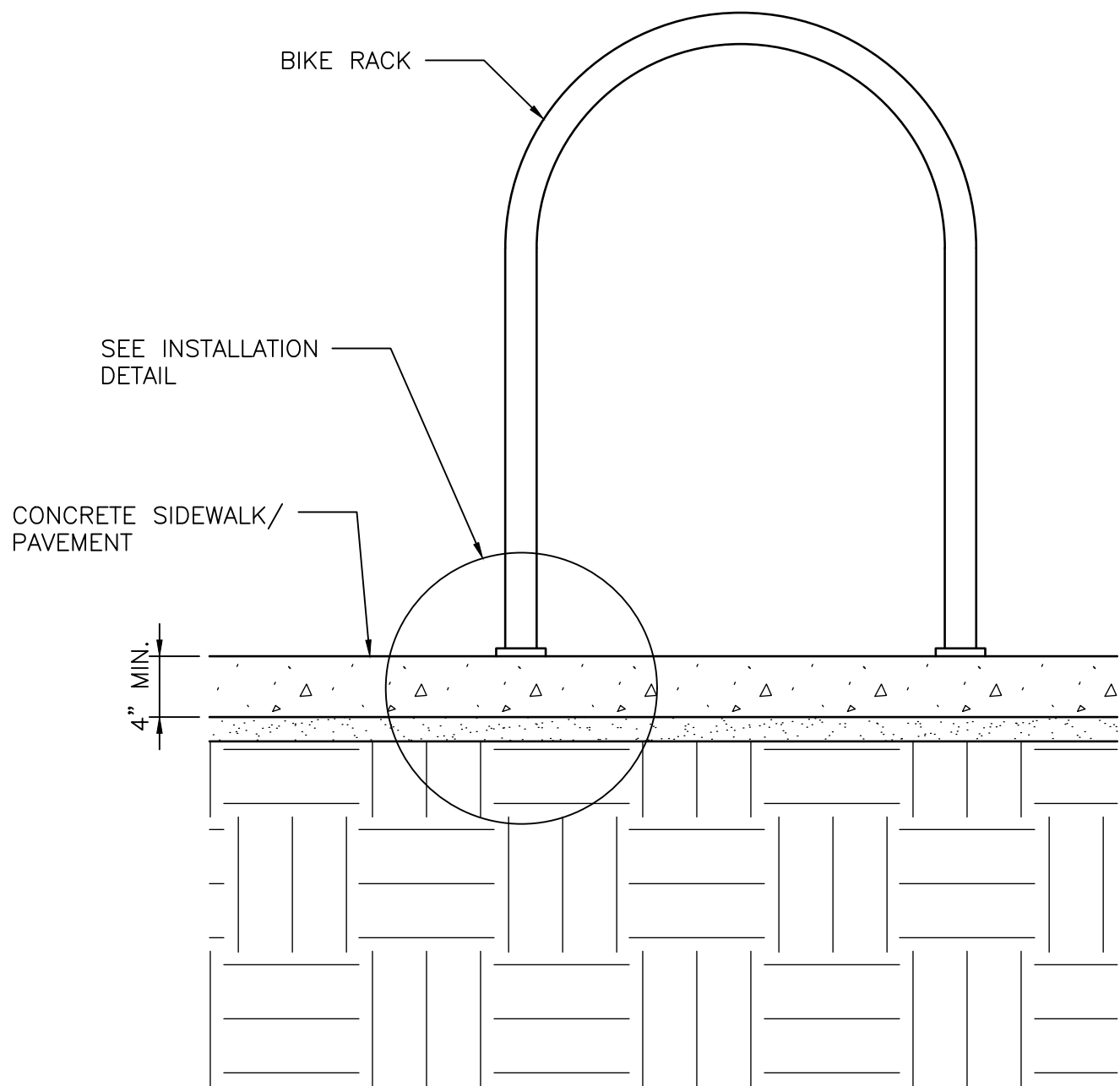
ALTERNATIVE BASE PLATE
(CIRCULAR OR OVAL)



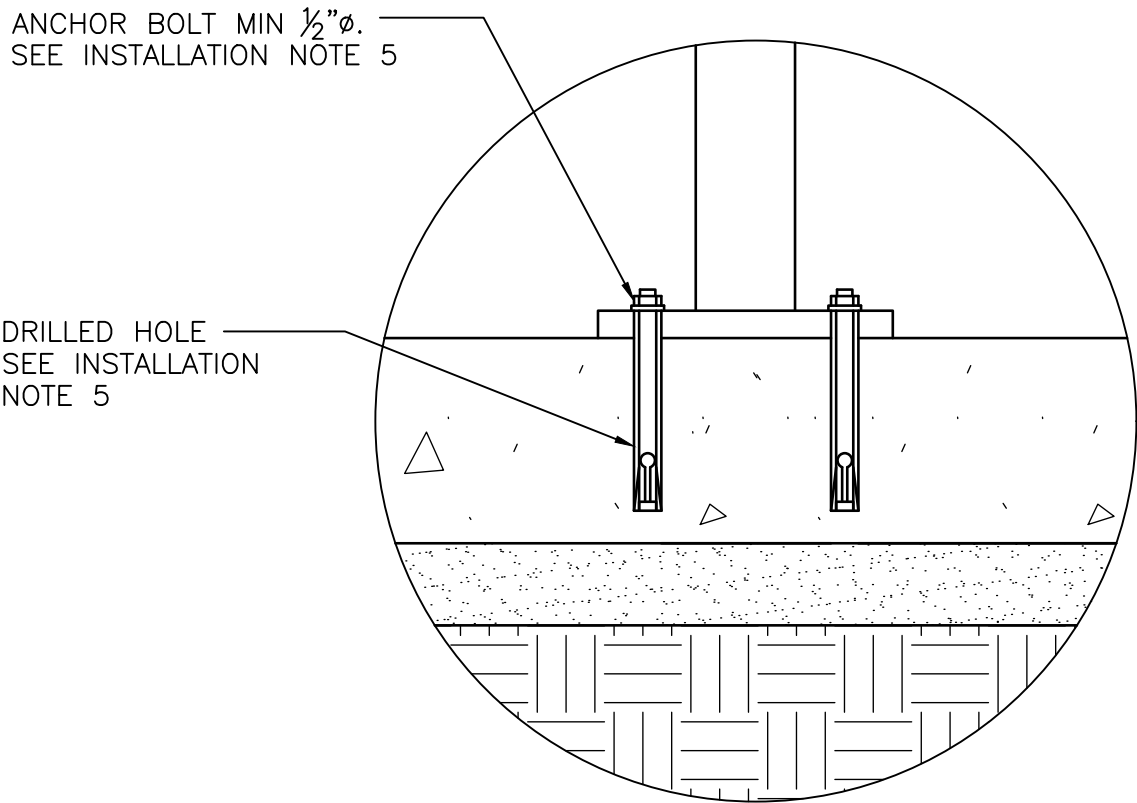
BASE PLATE DETAIL

TOP VIEW

TYPICAL BIKE RACK DETAIL

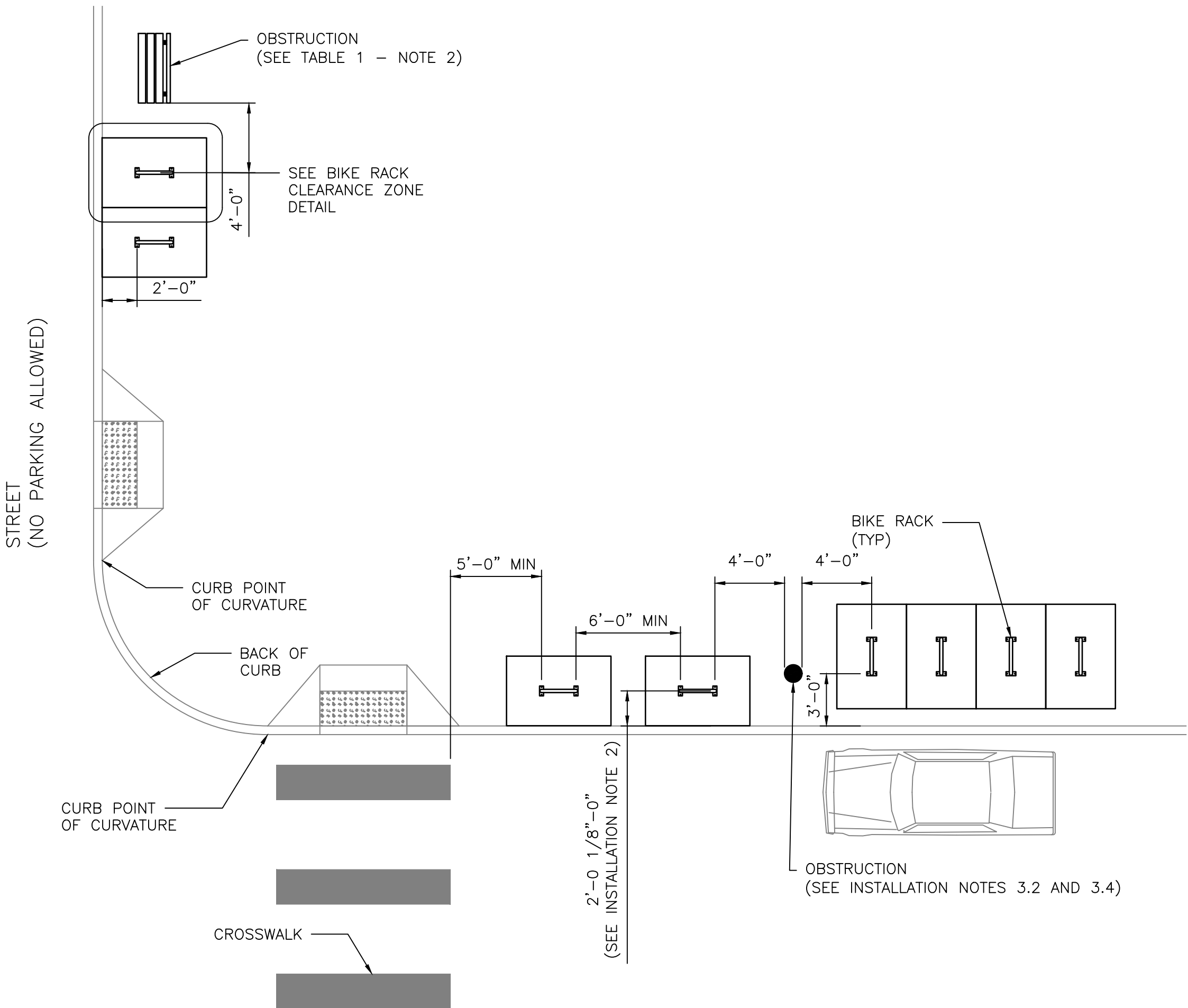


ELEVATION VIEW
BASIC INSTALLATION



INSTALLATION DETAIL
(SEE INSTALLATION NOTE 4)

BIKE RACK INSTALLATION IN
CONCRETE SIDEWALK/PAVEMENT

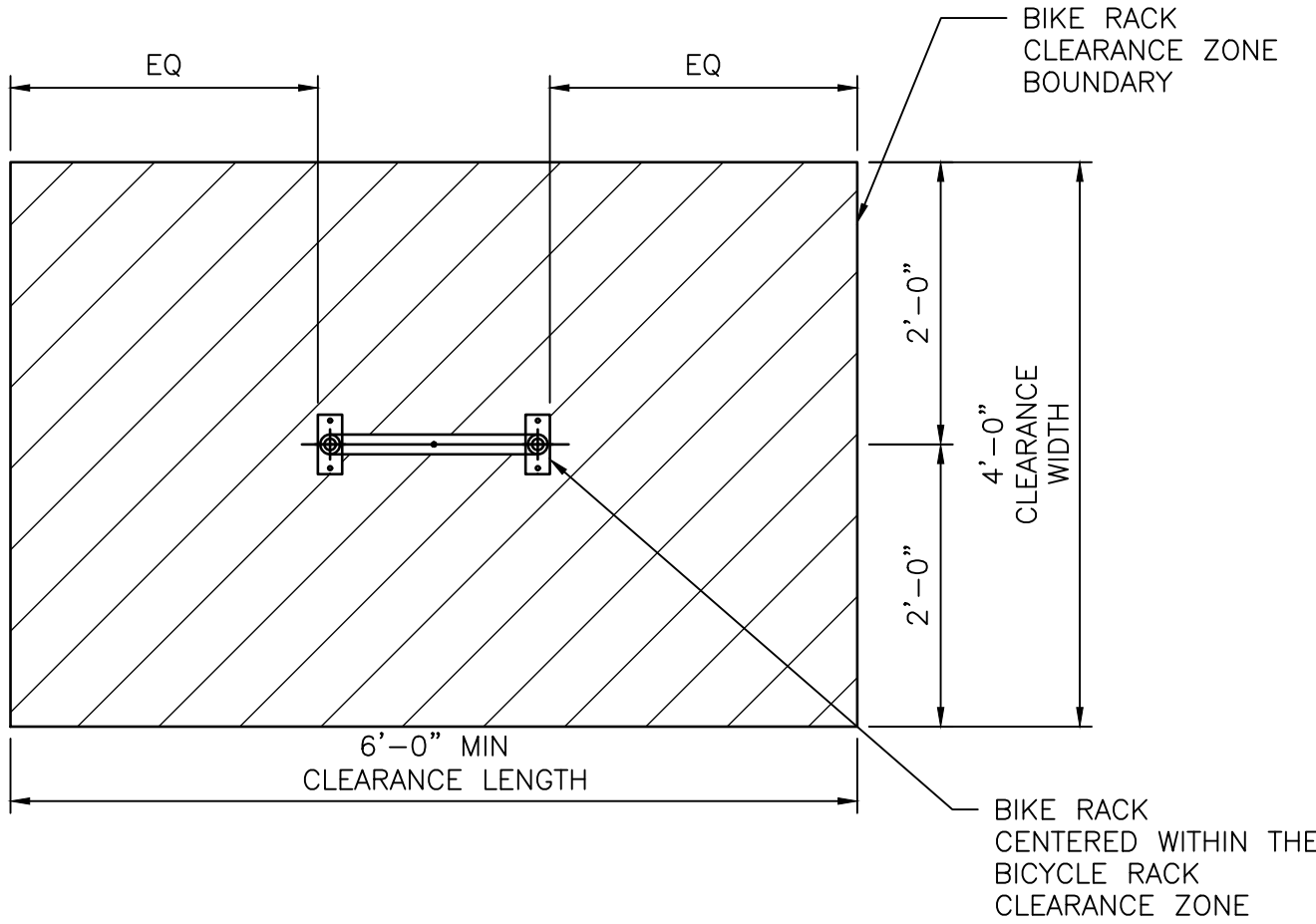


PLAN VIEW

TABLE 1: SPACING STANDARDS			
LOCATION	ORIENTATION	MINIMUM (FT-IN)	PREFERRED (FT-IN)
BETWEEN RACKS	SIDE-BY-SIDE	3' - 0"	4' - 0"
	END-TO-END	6' - 0"	8' - 0"
BACK OF CURB	PERPENDICULAR	2' - 0" (1)	3' - 0"
	PARALLEL	2' - 0" (1)	3' - 0"
FROM WALL	PERPENDICULAR	4' - 0"	-
	PARALLEL	3' - 0"	-
FROM OBSTRUCTION (2)	ALL	3' - 0"	4' - 0"
FROM CROSSWALK	PERPENDICULAR	5' - 0"	-

TABLE NOTES:
(1) SEE INSTALLATION NOTE 2
(2) SEE INSTALLATION NOTE 3.2 AND 3.4

BIKE RACK PLACEMENT
SEE GENERAL NOTE 2



BIKE RACK CLEARANCE ZONE DETAIL

FABRICATION NOTES:

1. BASE PLATES TO BE GALVANIZED ¼" THICK PLATES, ASTM A-36 1010-1018 LOW CARBON PRIME STEEL.
2. BOLT DIMENSIONS PER ASME B18.2.1. BOLT MATERIAL PER ASTM A307, GR. A.
3. ALL VENT HOLES USED DURING FABRICATION MUST BE PLUGGED AND COATED.

INSTALLATION NOTES:

1. BIKE RACKS SHALL BE INSTALLED WITHIN THE PEDESTRIAN REALM OR WITHIN THE CURB-TO-CURB SPACE ONLY IF PLACED WITHIN A BULB-OUT OR IT IS REPLACING ON-STREET PARKING SPACE(S). BIKE RACKS SHALL BE ADJACENT AND CLOSEST TO THE STREET CURB OUTSIDE OF BUS LOADING ZONES. ALL BIKE RACKS INSTALLATION LOCATIONS SHALL BE APPROVED BY TRANSPORTATION & DRAINAGE OPERATIONS.
2. BIKE RACKS SHALL BE SETBACK 3 FEET FROM THE BACK OF CURB WHEN ADJACENT TO AUTO PARKING. BIKE RACKS ORIENTED PARALLEL TO CURB SHALL BE MEASURED TO THE CENTERLINE OF THE BIKE RACK. BICYCLE RACKS ORIENTED PERPENDICULAR TO CURB SHALL BE MEASURED TO THE CENTER OF THE BIKE RACK BASE PLATE.
3. BIKE RACKS SHALL BE INSTALLED WITH THE FOLLOWING CLEARANCES:
 - 3.1. PROVIDE 4 FEET MINIMUM CLEARANCE FROM THE CURB POINT OF CURVATURE OF ANY DRIVEWAY, ROADWAY OR ALLEY.
 - 3.2. 5 FEET MINIMUM CLEARANCE TO FIRE HYDRANTS. 4 FEET MINIMUM CLEARANCE TO FIRE DEPARTMENT CONNECTIONS WHETHER THE CONNECTIONS ARE LOCATED IN THE PUBLIC RIGHT-OF-WAY OR ON PRIVATE PROPERTY ALONG A BUILDING FACE.
 - 3.3. EACH BIKE RACK CLEARANCE ZONE SHALL HAVE AT LEAST ONE 48 INCH WIDE MINIMUM CLEAR AND UNOBSTRUCTED CONTINUOUS SIDEWALK PATH TO ALLOW FOR EGRESS AND INGRESS FROM EACH BIKE RACK PARKING ZONE TO AND FROM THE SIDEWALK AREA. THIS PATH MAYBE ADJACENT TO EITHER THE WIDTH OR THE LENGTH SIDES OF EACH CLEARANCE ZONE.
 - 3.4. PROVIDE 3 FEET MINIMUM CLEARANCE TO OBSTRUCTIONS SUCH AS SIDEWALK FURNITURE OR STREET IMPROVEMENTS INCLUDING BUT NOT LIMITED TO STREET TREES, TREEWELLS, PARKWAYS, PARKING METERS, STREET LIGHTING, TRAFFIC SIGNS OR POSTS, OTHER UTILITY FACILITIES/COVERS.
 - 3.5. PROVIDE A 4 INCH MINIMUM CLEARANCE FROM THE BIKE RACK BASE PLATE EDGE TO ANY EXPANSION JOINT OR CONTROL JOINT IN THE CONCRETE SIDEWALK PAVEMENT.
 - 3.6. NO PART OF THE BIKE RACK CLEARANCE ZONE SHALL PROTRUDE INTO THE REQUIRED PEDESTRIAN ZONE AND/OR THE PEDESTRIAN ACCESS ROUTE.
4. TO PREVENT THEFT OF BIKE RACK OR BIKES, EXPOSED BOLTS MUST BE DEFORMED AND NUTS RE-TIGHTENED TO PREVENT THEM FROM BEING EASILY UNTHREADED. NUTS SHOULD BE TESTED TO ENSURE THAT THEY CANNOT BE EASILY REMOVED AFTER DEFORMATION.
5. INSTALLATION AND ANCHOR TYPE SHALL BE PER MANUFACTURER'S SPECIFICATIONS.
6. BIKE RACKS SHALL NOT BE PLACED ON TOP OF VAULTS AND UTILITY BOX ACCESS COVERS OR STORM DRAIN INLETS.

GENERAL NOTES:

1. BIKE RACK SHALL CONFORM TO CITY OF HOUSTON STANDARD SPECIFICATION 02871 "BIKE RACKS".
2. PREFERRED SPACING STANDARDS ARE SHOWN WHERE APPLICABLE ON THE BIKE RACK PLACEMENT PLAN

APPROVED BY: <div>DocuSigned by: <i>Sulail Kanwar</i> 9EF9B0C0641F5478...</div>	APPROVED BY: <div>DocuSigned by: <i>KATHY MAULLEN</i> 95A29EFDA75B4CDD...</div>
CITY ENGINEER	CITY TRAFFIC ENGINEER

APPROVED BY: <div>DocuSigned by: <i>Carl Halladay</i> A98CA10B72B3453</div>	
DIRECTOR OF HOUSTON PUBLIC WORKS	

EFF DATE: NOV-27-2023	DWG NO: 02871-01
-----------------------	------------------

CITY OF HOUSTON
HOUSTON PUBLIC WORKS STANDARD

BIKE RACK	
	FOR CITY OF HOUSTON USE ONLY
DRAWING SCALE	
NOT TO SCALE	