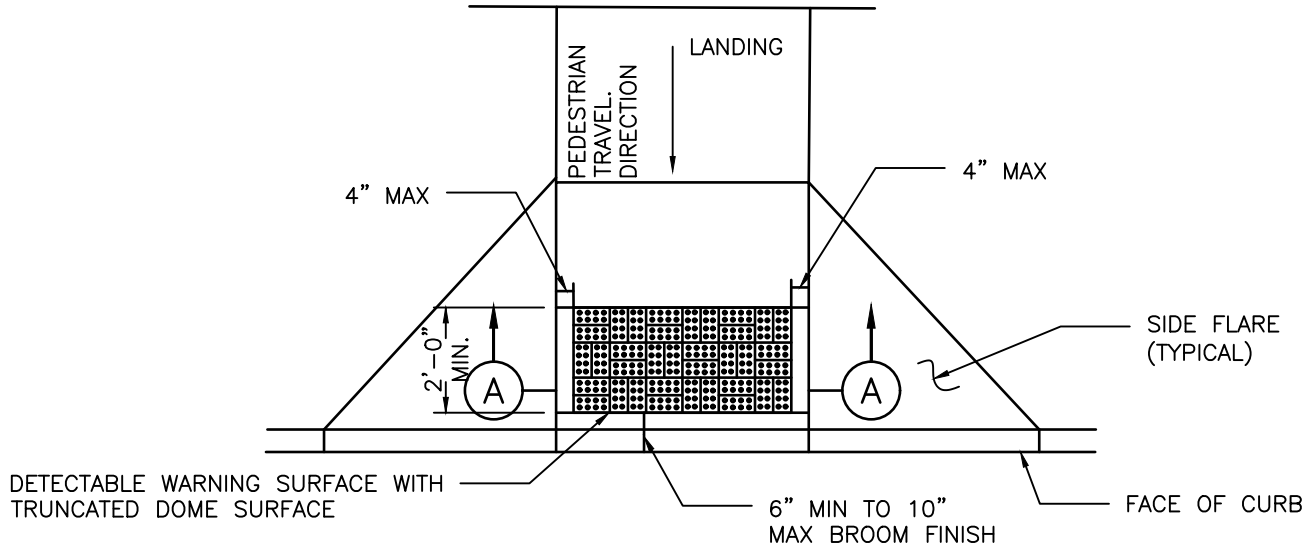
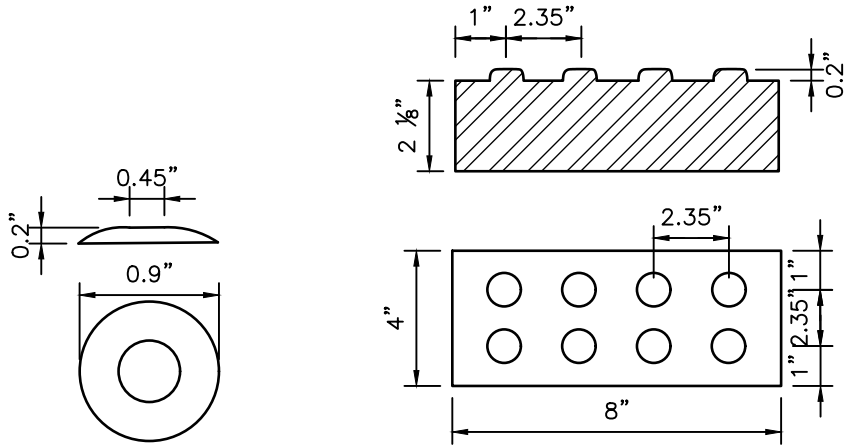


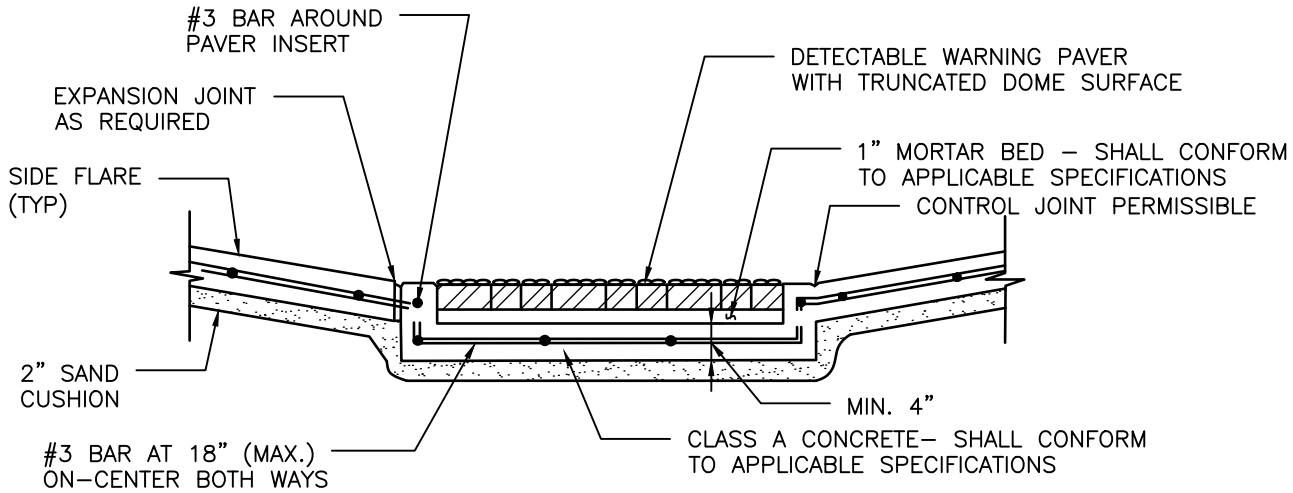
DISCLAIMER: THE USE OF THIS STANDARD IS GOVERNED BY THE TEXAS ENGINEERING PRACTICE ACT. THE DESIGN REQUIREMENTS ON THIS STANDARD DO NOT PURPORT TO ADDRESS ALL OF THE SAFETY CONCERNS ASSOCIATED WITH THEIR USE. THE ENGINEER OF RECORD (EOR) IS TO REVIEW THESE DESIGN REQUIREMENTS AND BY AUTHORIZING THEIR USE, ACCEPTS RESPONSIBILITY FOR THEIR APPLICABILITY, ADEQUACY AND SAFETY. NO WARRANTY OF ANY KIND IS MADE BY THE CITY OF HOUSTON FOR ANY PURPOSES WHATSOEVER. THE CITY OF HOUSTON ASSUMES NO RESPONSIBILITY FOR INCORRECT RESULTS OR DAMAGES RESULTING FROM ITS USE.



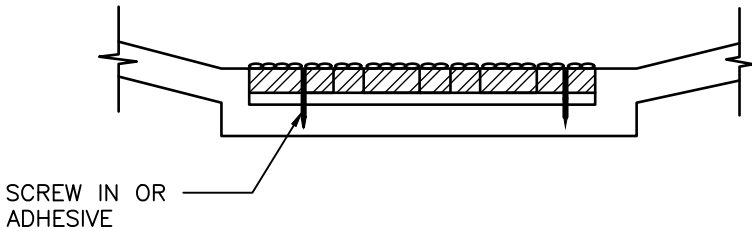
PLAN VIEW  
DETECTABLE WARNING SURFACE



DETAIL  
DETECTABLE WARNING PAVER



SECTION A-A  
PAVER



DETAIL A-5

NOTES:

GENERAL NOTES

1. ALL RAMPS AND SIDEWALKS/WALKWAYS SHALL BE CONSTRUCTED IN ACCORDANCE WITH HOUSTON PUBLIC WORKS STANDARDS, TEXAS ACCESSIBILITY STANDARDS (TAS) AND AMERICANS WITH DISABILITIES ACT (ADA) REQUIREMENTS. IF THERE IS A CONFLICT IN THE REQUIREMENTS, THE STRICTEST REQUIREMENTS SHALL GOVERN.
2. CURB RAMPS THAT ARE STEEPER THAN A 1:12 MAX SLOPE WILL NOT BE ACCEPTED BY THE CITY OF HOUSTON.

PAVERS

1. FURNISH DETECTABLE WARNING SURFACE UNITS MEETING ALL REQUIREMENTS OF ASTM C-936, C-33. LAY IN A TWO BY TWO UNIT BASKET WEAVE PATTERN OR AS DIRECTED.
2. LAY FULL-SIZE UNITS FIRST FOLLOWED BY CLOSURE UNITS CONSISTING OF AT LEAST 25 PERCENT OF A FULL UNIT. CUT DETECTABLE WARNING POWER UNITS USING A POWER SAW.

POLYMER CONCRETE

1. DETECTABLE WARNING TILES SHALL BE MADE OF POLYMER CONCRETE MATERIALS.
2. DETECTABLE WARNING TILES SHALL BE INSTALLED INTO FRESH CONCRETE (CAST-IN-PLACE) UTILIZING AN ANCHORING SYSTEM.
3. DETECTABLE WARNING TILES SHALL BE OF TERRACOTTA (BRICK-RED) COLOR AND COLORED THROUGHOUT TO GUARANTEE THE ADA REQUIRED COLOR CONTRAST.
4. DETECTABLE WARNING TILES SHALL MEET OR EXCEED THE FOLLOWING ASTM-BASED "STANDARDS" FOR CONCRETE MATERIALS.
  - A. COMPRESSION STRENGTH > 12,500 PSI PER ASTM C 39-04
  - B. WATER ABSORPTION < 0.25% PER ASTM C 97-09

PADS

1. FURNISH REQUIREMENTS OF ADAAG (MARCH 2003).
2. OTHER MATERIALS MAY BE USED IF APPROVED BY THE CITY ENGINEER

CITY OF HOUSTON HOUSTON PUBLIC WORKS STANDARD	
DETECTABLE WARNING SURFACE (OPTIONS)	
(SCALE: NOT TO SCALE)	
APPROVED BY:	
<div>DocuSigned by: <i>Suhail Kanwar</i> 9EF8B0C641F5478...</div> <div>CITY ENGINEER</div> <div>DocuSigned by: <i>HAIRNG NGUYEN</i> 95A29EFD475B4CD...</div> <div>CITY TRAFFIC ENGINEER</div>	<div>DocuSigned by: <i>Carol Haddock</i> A93C410B72B3453...</div> <div>DIRECTOR OF HPW</div>
EFF DATE: NOV-27-2023	DWG NO: 02775-07