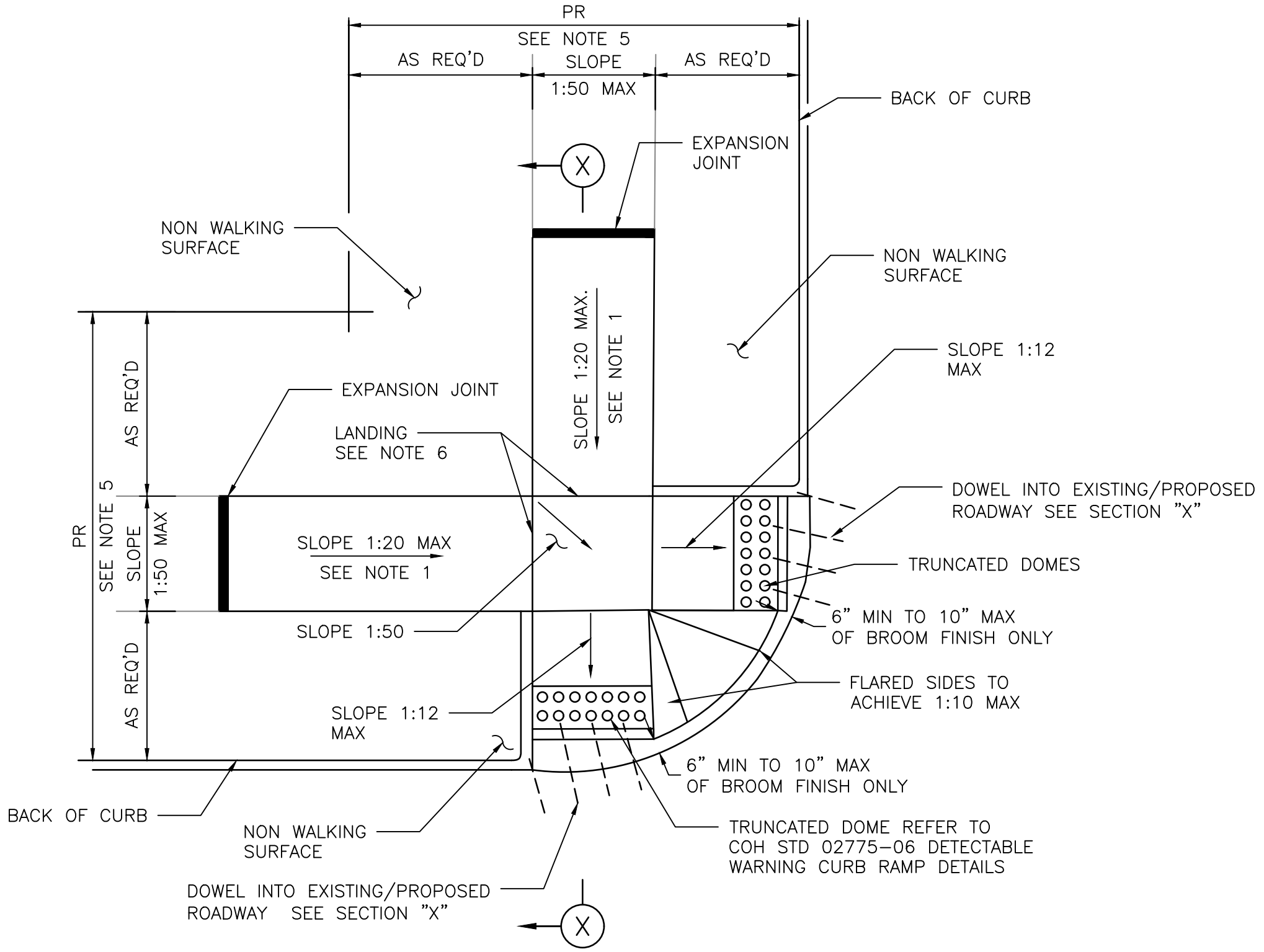
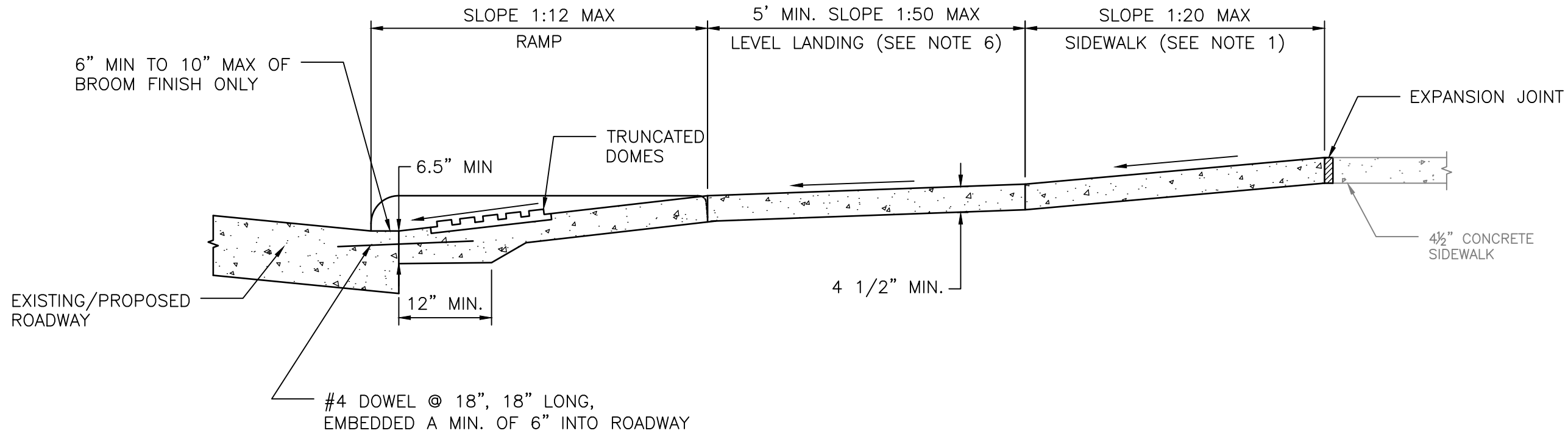
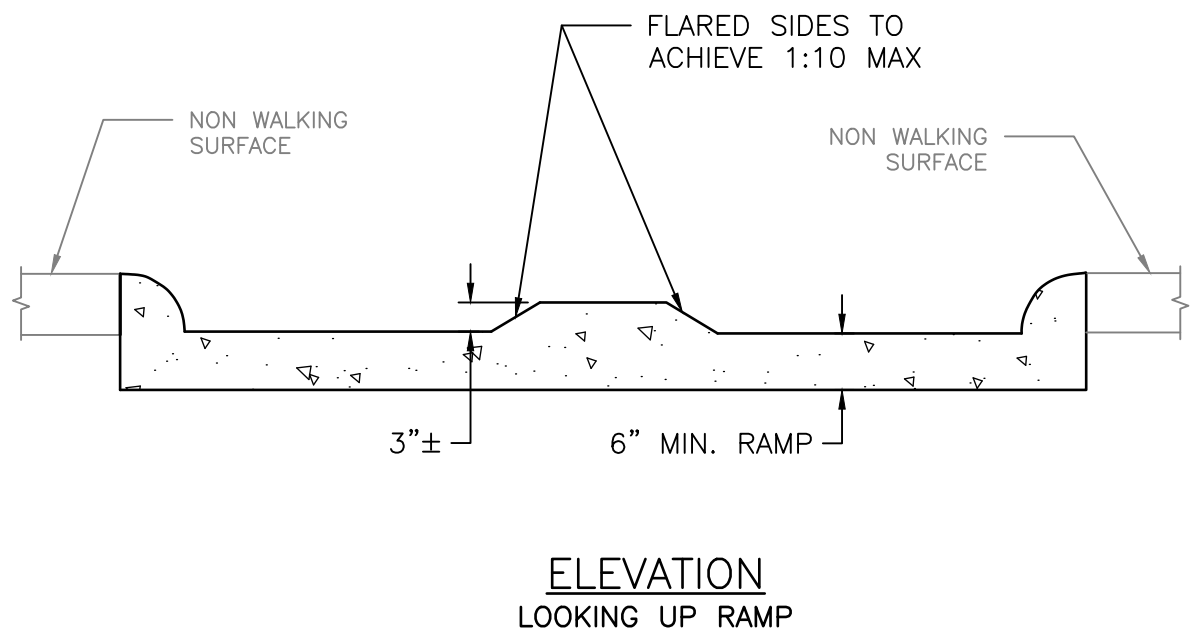


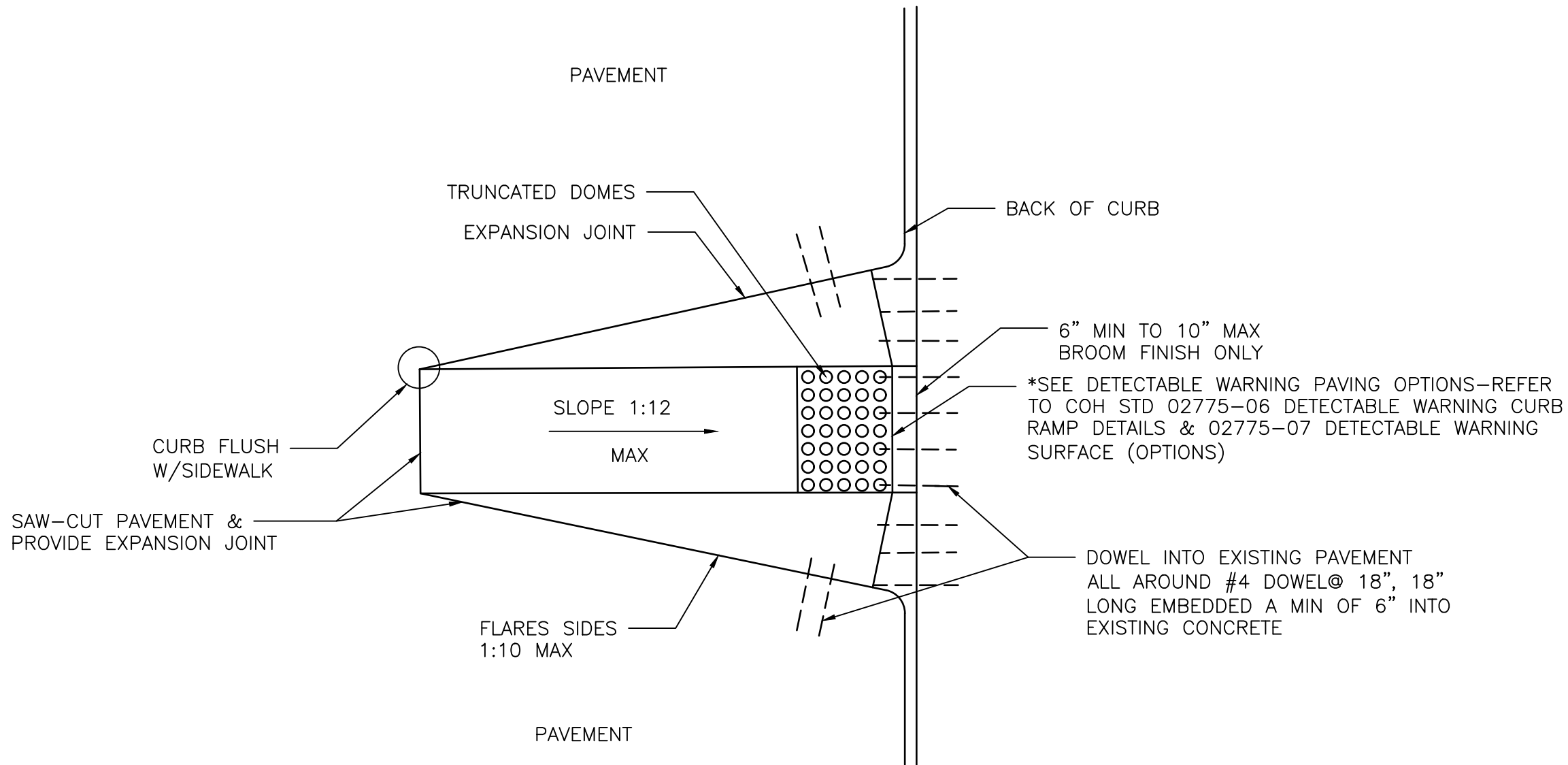
DISCLAIMER: THE USE OF THIS STANDARD IS GOVERNED BY THE TEXAS ENGINEERING PRACTICE ACT. THE DESIGN REQUIREMENTS ON THIS STANDARD DO NOT PURPORT TO ADDRESS ALL OF THE SAFETY CONCERNS ASSOCIATED WITH THEIR USE. THE ENGINEER OF RECORD (EOR) IS TO REVIEW THESE DESIGN REQUIREMENTS AND BY AUTHORIZING THEIR USE, ACCEPTS RESPONSIBILITY FOR THEIR APPLICABILITY, ADEQUACY AND SAFETY. NO WARRANTY OF ANY KIND IS MADE BY THE CITY OF HOUSTON FOR ANY PURPOSES WHATSOEVER. THE CITY OF HOUSTON ASSUMES NO RESPONSIBILITY FOR INCORRECT RESULTS OR DAMAGES RESULTING FROM ITS USE.



STREETS WITH NON- WALKING SURFACE BEHIND CURB
SEE NOTE-7



SECTION X-X



CURB RAMP CONSTRUCTION FOR EXISTING PAVEMENT

NOTES:

1. REPLACE EXISTING SIDEWALK FROM LEVEL LANDING AS NECESSARY TO ACHIEVE 1:20 SLOPE
2. BROOM FINISH IS MEASURED FROM FACE OF CURB.
3. ALL RAMPS AND SIDEWALKS/WALKWAYS SHALL BE CONSTRUCTED IN ACCORDANCE WITH HOUSTON PUBLIC WORKS STANDARDS, TEXAS ACCESSIBILITY STANDARDS (TAS) AND AMERICANS WITH DISABILITIES ACT (ADA) REQUIREMENTS. IF THERE IS A CONFLICT IN THE REQUIREMENTS, THE STRICTEST REQUIREMENTS SHALL GOVERN.
4. CURB RAMPS THAT ARE STEEPER THAN A 1:12 MAX SLOPE WILL NOT BE ACCEPTED BY THE CITY OF HOUSTON UNLESS NOTED OTHERWISE.
5. REFER TO CONTRACT DRAWINGS FOR PEDESTRIAN REALM (PR) WIDTH.
6. MINIMUM 5'x5' LANDING PAD ACCORDING TO ADA REQUIREMENTS. WHEN THE APPROACHING SIDEWALK IS WIDER THAN 5', THE LANDING PAD AND RAMP WIDTH MUST MATCH THE SIDEWALK WIDTH.
7. FOR STREETS WITH WALKABLE SURFACES IMMEDIATELY BEHIND THE CURB A FLARE IS REQUIRED ON BOTH SIDES OF THE RAMP.

APPROVED BY:	APPROVED BY:
<div>DocuSigned by: Sukail Kanwar 9EF9B0C041F5478...</div>	<div>DocuSigned by: KATHIE MAULLEN 9SA29EFD475B4C0...</div>
CITY ENGINEER	CITY TRAFFIC ENGINEER
APPROVED BY:	
<div>DocuSigned by: Carl Halliwell A98C410B72B3453</div>	
DIRECTOR OF HOUSTON PUBLIC WORKS	
EFF DATE: NOV-27-2023	DWG NO: 02775-02
CITY OF HOUSTON HOUSTON PUBLIC WORKS STANDARD	
TYPICAL CURB RAMP DETAILS	
	FOR CITY OF HOUSTON USE ONLY
DRAWING SCALE	
NOT TO SCALE	