



# **Importing Standard Details Guide**



**Revision Date**

**December 11, 2023**



**Notes to user:**

There are City of Houston standard details that are various sizes and orientation. Due to the variability of standard details, some details will be required to be shrunk to fit within the project title block. Below is a guide to help with determining how to incorporate the standard details.

Below is a duplication of the Infrastructure Design Manual graphic requirements for standard details:

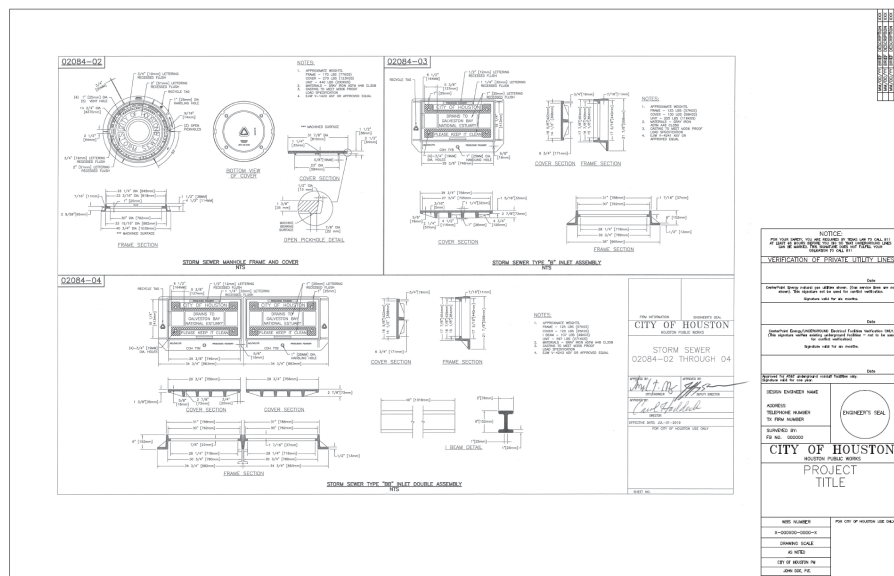
**3.1.05 IMPORTING STANDARD DETAILS**

**3.1.05.A** Standard details shall be imported onto the sheet files when applicable. City standard details shall not be cropped and must be included in the Drawings as the City provides them. The standard detail's entire border and title block must remain visible. For visibility each sheet shall only have up to:

1. Six 8 ½" x 11" standard details oriented portrait.
2. Four 8 ½" x 11" standard details oriented landscape.
3. Two 11"x17" standard details oriented landscape.
4. One 22"x34" standard detail oriented landscape.

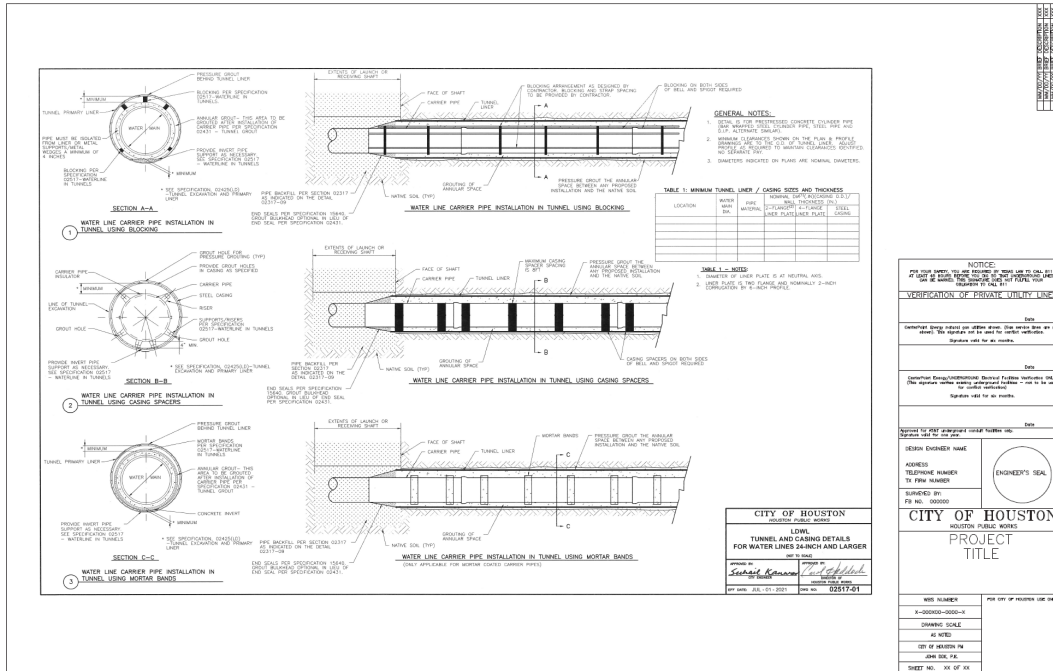
**A.** For 22"x34" Standard Details, there are currently 3 different City title blocks. Below is guidance on how to incorporate the detail in the project title block:

1. Title Blocks with multiple details that are intended to be 22"x34" will be shrunk to fit within the major title block as shown:

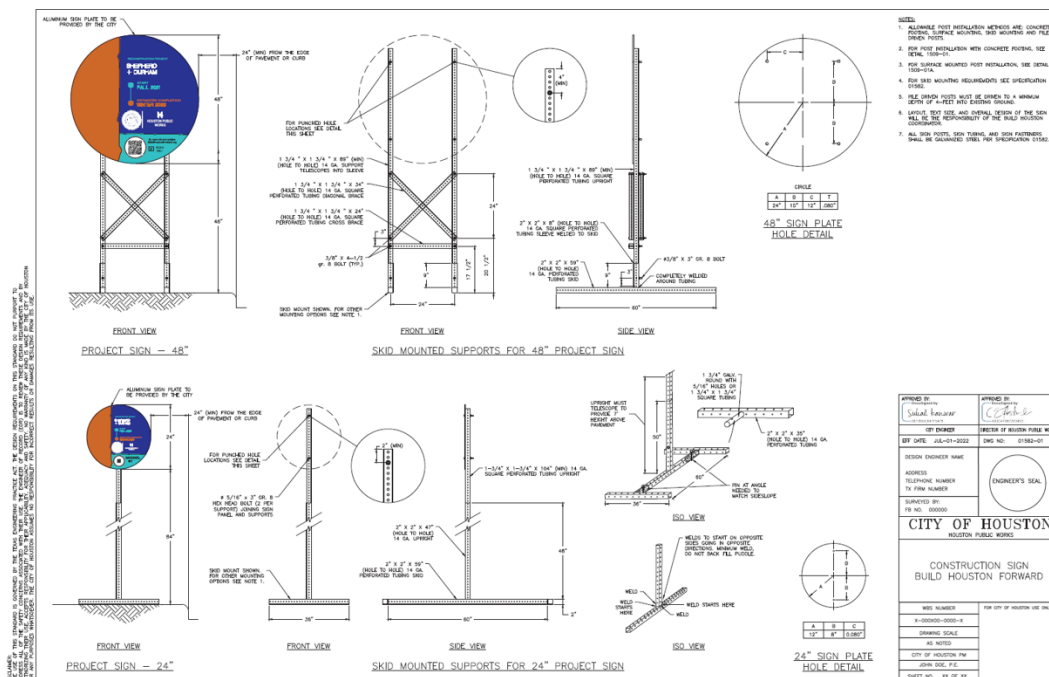




- Title Blocks that do not resemble the Capital Project title block will be shrunk to fit within the major title block as shown:



- Title Blocks that resemble the capital project title block will be inserted into the plan set without being shrunk. Project information will be added to the title block:





- B. 11"x17" standard details will be shrunk such that one detail will occupy half of the open area within the project title block.
- C. 8 ½"x11" standard details will be inserted such that one detail will occupy 1/6 the open area within the project title block.
- D. Combinations of 11"x17" and 8 ½"x11" standard details are acceptable when placed within the project title block open area according to these guidelines.
- E. See "Standard Detail Sizes and Orientation" table on the following pages for orientation and size of standard detail.



CITY OF HOUSTON STANDARD DETAILS SIZES AND ORIENTATION

CATEGORY	STANDARD DETAIL NO. (2022)	STANDARD DETAIL NO. (2023)	STANDARD DETAIL TITLE (2022)	STANDARD DETAIL TITLE (2023)	EFFECTIVE DATE	ORIENTATION	SIZE
GENERAL	01571-01	01571-01	Storm Water Pollution Prevention Plan Details	Storm Water Pollution Prevention Plan Details	7/1/2010	LANDSCAPE	22x34
GENERAL	01580-01	01555-14	Barricade Standard	Barricade and Channelizing Devices	11/27/2023	LANDSCAPE	22x34
GENERAL	01580-02	01555-15	End of Street Sign	End of Street Sign	11/27/2023	LANDSCAPE	11x17
GENERAL	01580-03	01580-01	Construction Sign	Construction Sign	11/27/2023	LANDSCAPE	11x17
GENERAL	01580-04	NA	Construction Sign ReBuild Houston Project Drainage Utility Fee Funding	NA	Retired	NA	NA
GENERAL	01580-05	NA	Construction Sign ReBuild Houston Project Drainage Utility Fee Funding	NA	Retired	NA	NA
GENERAL	01580-06	NA	Construction Sign ReBuild Houston Project Drainage Utility Fee Funding	NA	Retired	NA	NA
GENERAL	01582-01	01582-01	Construction Sign Build Houston Forward	Construction Sign Build Houston Forward	11/27/2023	LANDSCAPE	22x34
STORM	02081-01 THROUGH 04	02081-01 THROUGH 04	STORM SEWER	STORM SEWER	7/1/2019	LANDSCAPE	22x34
STORM	02081-05 THROUGH 08	02081-05 THROUGH 08	STORM SEWER	STORM SEWER	7/1/2019	LANDSCAPE	22x34
STORM	02082-12	02082-12	STORM SEWER TYPE 'C' PRECAST ROUND MANHOLE	STORM SEWER TYPE 'C' PRECAST ROUND MANHOLE	7/1/2021	LANDSCAPE	22x34
STORM	02082-13	02082-13	STORM SEWER PRECAST BOX MANHOLE	STORM SEWER PRECAST BOX MANHOLE	7/1/2021	LANDSCAPE	22x34
STORM	02084-02 THROUGH 04	02084-02 THROUGH 04	STORM SEWER	STORM SEWER	7/1/2019	LANDSCAPE	22x34
STORM	02084-05 THROUGH 08	02084-05 THROUGH 08	STORM SEWER	STORM SEWER	7/1/2019	LANDSCAPE	22x34
STORM	02084-09 THROUGH 11 AND 02317-02	02084-09 THROUGH 11 AND 02317-02	STORM SEWER	STORM SEWER	7/1/2019	LANDSCAPE	22x34
STORM	02317-03 THROUGH 07	02317-03 THROUGH 07	STORM SEWER	STORM SEWER	7/1/2019	LANDSCAPE	22x34
STORM	02632-01 AND 03	02632-01 AND 03	STORM SEWER	STORM SEWER	7/1/2019	LANDSCAPE	22x34
STORM	02632-04 THROUGH 05	02632-04 THROUGH 05	STORM SEWER	STORM SEWER	7/1/2019	LANDSCAPE	22x34
STORM	02632-06 THROUGH 08	02632-06 THROUGH 08	STORM SEWER	STORM SEWER	7/1/2019	LANDSCAPE	22x34
STORM	02632-09 AND 02632-10	02632-09 AND 02632-10	STORM SEWER	STORM SEWER	7/1/2019	LANDSCAPE	22x34
ST CUT	02951-01	02951-01	Street Cut Pavement Replacement - Concrete Pavement Less Than 5 Years in Age	Street Cut for Concrete Pavement Replacement/Restoration Age of Pavement <= 5yrs	11/27/2023	LANDSCAPE	11x17
ST CUT	02951-02	02951-02	Street Cut Pavement Replacement - Concrete Pavement Over Than 5 Years In Age	Street Cut for Concrete Pavement Replacement/Restoration Age of Pavement > 5yrs	11/27/2023	LANDSCAPE	11x17
ST CUT	02951-03	02951-03	Street Cut Pavement Replacement - Asphalt Pavement for Pavement of All Ages	Street Cut for Asphalt Pavement Replacement/Restoration for Pavement of All Ages	11/27/2023	LANDSCAPE	11x17
ST CUT	02902-01	02951-04	Pavement Repair Details for Street Cuts	Pavement Repair Detail for Street Cuts (Flex-Base Pavement & Concrete Pavement)	11/27/2023	LANDSCAPE	11x17
ST CUT	02902-02	02951-05	Pavement Repair Details for Street Cuts - Non Reinforced Concrete and Brick Pavement	Pavement Repair Detail for Street Cuts (Non-Reinforced Concrete & Brick Pavement)	11/27/2023	LANDSCAPE	11x17
STREET	02632-11	02632-11	Side Street Ditch Reception	Side Street Ditch Reception	10/1/2002	LANDSCAPE	22x34
STREET	02741-01	02741-01	Hot Mix Asphaltic Concrete Pavement Details	Hot Mix Asphaltic Concrete Pavement Details	11/27/2023	LANDSCAPE	11x17
STREET	02751-01	02751-01	Concrete Pavement Details	Concrete Pavement Details	11/27/2023	LANDSCAPE	22x34
STREET	02752-01	02752-01	Pavement Expansion and Construction Joint Details	Pavement Expansion and Construction Joint Details	11/27/2023	LANDSCAPE	11x17
STREET	02752-02	02752-02	Sidewalk Expansion and Construction Joint Details	Sidewalk Expansion and Construction Joint Details	11/27/2023	LANDSCAPE	11x17
STREET	02754-01A	02754-01A	Driveway/Local Residential Streets	Driveway Detail with 4"x12" Curb for Local Residential Street	11/27/2023	LANDSCAPE	22x34
STREET	02754-01B	02754-01B	Driveway Detail with 6" Curbed Streets	Driveway Detail with 6" Curbed Streets	11/27/2023	LANDSCAPE	22x34
STREET	02754-02	02754-02	Driveways with Culverts or Valley Gutters on Open Ditch Type Streets	Driveways with Culverts on Open Ditch Type Streets	11/27/2023	LANDSCAPE	11x17
STREET	02754-03	02754-03	Proposed Sidewalk Through Driveway with Excessive Elevation Difference	Proposed Sidewalk Through Driveway with Excessive Elevation Difference	11/27/2023	LANDSCAPE	22x34
STREET	02754-04	02754-04	Existing/Proposed Curb Level Sidewalk Conditions	Proposed Sidewalk Through Driveway with Minimal Elevation Difference	11/27/2023	LANDSCAPE	22x34
STREET	02771-01	02771-01	Curb, Curb and Gutter, and Header Details	Curb, Curb and Gutter, and Header Details	11/27/2023	LANDSCAPE	22x34
STREET	NA	02771-02	NA	14" Wide Precast Concrete Curb for Bicycle Lanes	11/27/2023	LANDSCAPE	22x34
STREET	02772-01	02772-01	Esplanade Nose and Left Turn Details	Esplanade Nose and Left Turn Details	11/27/2023	LANDSCAPE	11x17
STREET	02775-01	02775-01	Concrete Sidewalk Details for Streets with Curbs	Typical Sidewalk Layout and Details for Streets with Curbs	11/27/2023	LANDSCAPE	11x17
STREET	02775-02	02775-02	Wheel Chair Ramp Details	Typical Curb Ramp Details	11/27/2023	LANDSCAPE	22x34
STREET	02775-03	02775-03	Parallel Curb Ramp	Parallel Curb Ramp	11/27/2023	LANDSCAPE	11x17





CITY OF HOUSTON STANDARD DETAILS SIZES AND ORIENTATION

CATEGORY	STANDARD DETAIL NO. (2022)	STANDARD DETAIL NO. (2023)	STANDARD DETAIL TITLE (2022)	STANDARD DETAIL TITLE (2023)	EFFECTIVE DATE	ORIENTATION	SIZE
STREET	02775-04	02775-04	Curb Modifications for Wheel Chair Ramps & Crosswalks	Curb Modification for Curb Ramps & Crosswalks	11/27/2023	LANDSCAPE	11x17
STREET	02775-05	02775-05	Commercial Curb Ramp Details	Commercial & High Density Conditions Curb Ramp Details	11/27/2023	LANDSCAPE	11x17
STREET	02775-06	02775-06	Detectable Warning Curb Ramp Details	Detectable Warning Curb Ramp Details	11/27/2023	LANDSCAPE	11x17
STREET	02775-07	02775-07	Detectable Warning Surface (Options)	Detectable Warning Surface (Options)	11/27/2023	LANDSCAPE	11x17
STREET	02775-08	02775-08	Sidewalks and Clear Zone Transit Corridor Street	Sidewalks and Clear Zone Transit Corridor Street	11/27/2023	LANDSCAPE	11x17
STREET	NA	02775-09	NA	Perpendicular Curb Ramp	11/27/2023	PORTRAIT	8.5x11
STREET	NA	02775-10	NA	Retrofit Bikeway at Floating Bus Stop	11/27/2023	LANDSCAPE	22x34
STREET	NA	02871-01	NA	Bike Rack	11/27/2023	LANDSCAPE	22x34
STREET	31-01	31-01	Space Requirements for Off Street Parking	Refer to City of Houston Amendments to the 2015 International Building Code page 121.	NA	NA	NA
STREET	31-02	31-02	Space Requirements for Off Street Parking	Refer to City of Houston Amendments to the 2015 International Building Code page 122.	NA	NA	NA
TRAFFIC	01509-01	01554-01	General Notes and Ground Mounting Sign	General Notes and Ground Mounting Sign	11/27/2023	LANDSCAPE	11x17
TRAFFIC	01509-01A	01554-02	Sign Base Mounting Details	Sign Base Hard Surface Mounting Details	11/27/2023	LANDSCAPE	11x17
TRAFFIC	01509-02	01554-03	Street Name Sign and Sign Mounting	Street Name Sign and Sign Mounting	11/27/2023	LANDSCAPE	11x17
TRAFFIC	01509-02A	01554-04	Custom Signs	Custom Signs	11/27/2023	LANDSCAPE	22x34
TRAFFIC	NA	01554-05A	NA	Houston Bikeway Signage (Sheet 1 of 2)	11/27/2023	LANDSCAPE	22x34
TRAFFIC	NA	01554-05B	NA	Houston Bikeway Signage (Sheet 2 of 2)	11/27/2023	LANDSCAPE	22x34
TRAFFIC	01509-03	01554-06	Ground Mounted Sign Sizes	Ground Mounted Sign Sizes	11/27/2023	LANDSCAPE	22x34
TRAFFIC	01509-04	01554-07	Typical Sign Placement	Typical Sign Placement	11/27/2023	LANDSCAPE	11x17
TRAFFIC	01509-05	01554-08	Typical City of Houston Signs	Typical City of Houston Signs (Sheet 1 of 2)	11/27/2023	LANDSCAPE	22x34
TRAFFIC	01509-06	01554-09	Typical City of Houston Signs	Typical City of Houston Signs (Sheet 1 of 2)	11/27/2023	LANDSCAPE	22x34
TRAFFIC	01509-07	01554-10	Summary of Small Signs	Summary of Small Signs	11/27/2023	LANDSCAPE	22x34
TRAFFIC	02893-09	01554-11	Overhead Street Name Sign Mounting Details	Overhead Street Name Sign Mounting Details	11/27/2023	LANDSCAPE	11x17
TRAFFIC	01512-01	01555-01	TCP Notes Channelizing Devices and Barricades	TCP Notes Channelizing Devices and Barricades	11/27/2023	LANDSCAPE	22x34
TRAFFIC	01512-02	01555-02	TCP Overall Traffic Control Layout	TCP Overall Traffic Control Layout	11/27/2023	LANDSCAPE	22x34
TRAFFIC	01512-03	01555-03	Traffic Control Layout	Traffic Control Layout	11/27/2023	LANDSCAPE	22x34
TRAFFIC	01512-04	01555-04	TCP One Lane Closure Phase 1 & 2	TCP One Lane Closure Phase 1 & 2	11/27/2023	LANDSCAPE	22x34
TRAFFIC	01512-05	01555-05	TCP One Lane Closure	TCP Typical Detour Routing with One Lane Closure (One Block)	11/27/2023	LANDSCAPE	22x34
TRAFFIC	01512-06	01555-06	TCP Typical 3-Way Intersection Phase 1 of 3	TCP Typical Construction Zone at a T-Intersection Phase 1 of 3	11/27/2023	LANDSCAPE	22x34
TRAFFIC	01512-07	01555-07	TCP Typical 3-Way Intersection Phase 2 of 3	TCP Typical Construction Zone at a T-Intersection Phase 2 of 3	11/27/2023	LANDSCAPE	22x34
TRAFFIC	01512-08	01555-08	TCP Typical 3-Way Intersection Phase 3 of 3	TCP Typical Construction Zone at a T-Intersection Phase 3 of 3	11/27/2023	LANDSCAPE	22x34
TRAFFIC	01512-09	01555-09	TCP 4-Way Intersection Phase 1 of 4	TCP Typical Construction Zone at a 4-Way Intersection (Low Volume Traffic) Phase 1 of 4	11/27/2023	LANDSCAPE	22x34
TRAFFIC	01512-10	01555-10	TCP 4-Way Intersection Phase 2 of 4	TCP Typical Construction Zone at a 4-Way Intersection (Low Volume Traffic) Phase 2 of 4	11/27/2023	LANDSCAPE	22x34
TRAFFIC	01512-11	01555-11	TCP 4-Way Intersection Phase 3 of 4	TCP Typical Construction Zone at a 4-Way Intersection (Low Volume Traffic) Phase 3 of 4	11/27/2023	LANDSCAPE	22x34
TRAFFIC	01512-12	01555-12	TCP 4-Way Intersection Phase 4 of 4	TCP Typical Construction Zone at a 4-Way Intersection (Low Volume Traffic) Phase 4 of 4	11/27/2023	LANDSCAPE	22x34
TRAFFIC	02893-17	01555-13	Traffic Control Plan for Signal Construction	Traffic Control Plan for Signal Construction	11/27/2023	LANDSCAPE	22x34
TRAFFIC	02893-18	01555-16/16712-03	Crosswalk Closures and Pedestrian Detours, Solar School Zone Flashing Beacon	Crosswalk Closures And Pedestrian Detours/ Solar Powered School Zone Flashing Beacon	11/27/2023	PORTRAIT	8.5x11
TRAFFIC	02893-05	02465-01	Pole Foundation Details	Drilled Shaft Foundations	11/27/2023	LANDSCAPE	11x17
TRAFFIC	02893-07	02465-02	Pedestal Pole with Drilled Shaft Foundation	Pedestal/Pushbutton Pole Drilled Shaft Foundation	11/27/2023	LANDSCAPE	22x34
TRAFFIC	02893-03	02582-01	Typical Mast Arm/Pole Fixture Configuration	Typical Mast Arm/Pole Fixture Configuration	11/27/2023	LANDSCAPE	22x34
TRAFFIC	02893-04A	02582-02	Traffic Signal Structures (Sheet 1 of 2)	Traffic Signal Structures (Sheet 1 of 2)	11/27/2023	LANDSCAPE	22x34
TRAFFIC	02893-04B	02582-03	Traffic Signal Structures (Sheet 2 of 2)	Traffic Signal Structures (Sheet 2 of 2)	11/27/2023	LANDSCAPE	22x34



CITY OF HOUSTON STANDARD DETAILS SIZES AND ORIENTATION

CATEGORY	STANDARD DETAIL NO. (2022)	STANDARD DETAIL NO. (2023)	STANDARD DETAIL TITLE (2022)	STANDARD DETAIL TITLE (2023)	EFFECTIVE DATE	ORIENTATION	SIZE
TRAFFIC	02893-06	02582-04	Pedestal Pole with Screw-in Anchor Foundation (For School Zone Flashers Only)	Pedestal Pole with Screw-in Anchor Foundation (For School Zone Flashers Only)	11/27/2023	LANDSCAPE	22x34
TRAFFIC	01510-01	02760-01	General Notes and Legends	Pavement Markings General Notes and Legends	11/27/2023	LANDSCAPE	22x34
TRAFFIC	01510-02	02760-02	Left/Right-Turn "Only" and Arrow Spacing	Left/Right-Turn "Only" and Arrow Spacing	11/27/2023	LANDSCAPE	22x34
TRAFFIC	01510-03	02760-03	Standard Pavement Marking (Words)	Standard Pavement Marking (Words)	11/27/2023	LANDSCAPE	22x34
TRAFFIC	01510-04	02760-04	Standard Pavement Marking - Symbols	Standard Pavement Marking - Symbols	11/27/2023	LANDSCAPE	22x34
TRAFFIC	01510-05	02760-05	Standard Pavement Markings with Reflective Raised Pavement Markers for Position Guidance	Standard Pavement Markings with Reflective Raised Pavement Markers for Position Guidance	11/27/2023	LANDSCAPE	22x34
TRAFFIC	01510-06	02760-06	Reflective Chip Seal Marker Use for Temporary Markings	Reflective Chip Seal Marker Use for Temporary Markings	11/27/2023	LANDSCAPE	22x34
TRAFFIC	01510-07	02760-07	Pavement Markings for Accessible Parking	Pavement Markings for Accessible Parking	11/27/2023	LANDSCAPE	22x34
TRAFFIC	01510-08	02760-08	Railroad Crossing Pavement Marking Details	Railroad Crossing Pavement Marking Details	11/27/2023	LANDSCAPE	22x34
TRAFFIC	01510-09	02760-09	Bicycle Lane Pavement Markings	Bicycle Lane Pavement Markings	11/27/2023	LANDSCAPE	22x34
TRAFFIC	01510-09A	02760-10	Bicycle Intersection Treatments	Bicycle Intersection Treatments (Sheet 1 of 2)	11/27/2023	LANDSCAPE	22x34
TRAFFIC	NA	02760-11	NA	Bicycle Intersection Treatments (Sheet 2 of 2)	11/27/2023	LANDSCAPE	22x34
TRAFFIC	01510-10	02760-12	Typical Crosswalk Details	Typical Crosswalk Details	11/27/2023	LANDSCAPE	22x34
TRAFFIC	01510-11	02760-13	Left-Turn Lane & Right-Turn Lane Design Worksheet 1	Left-Turn Lane & Right-Turn Lane Design (Sheet 1 of 2)	11/27/2023	LANDSCAPE	22x34
TRAFFIC	01510-12	02760-14	Left-Turn Lane & Right-Turn Lane Design Worksheet 2	Left-Turn Lane & Right-Turn Lane Design (Sheet 2 of 2)	11/27/2023	LANDSCAPE	22x34
TRAFFIC	01510-13	02760-15	Two-Way Left-Turn Lane Detail 1	Two-Way Left-Turn Lane Detail 1	11/27/2023	LANDSCAPE	22x34
TRAFFIC	01510-14	02760-16	Two-Way Left-Turn Lane Detail 2	Two-Way Left-Turn Lane Detail 2	11/27/2023	LANDSCAPE	22x34
TRAFFIC	02893-02	02893-01	Hardware Legends	Hardware Legends	11/27/2023	LANDSCAPE	11x17
TRAFFIC	02893-14	02893-02	Electrical Service Support Pedestal Service Type PS	Electrical Service Support Pedestal Service Type PS	11/27/2023	LANDSCAPE	22x34
TRAFFIC	02893-15	02893-03	Meter Loop	Meter Loop	11/27/2023	LANDSCAPE	11x17
TRAFFIC	02893-16	02893-04	Hardware Interconnect Details	Hardware Interconnect Details	11/27/2023	LANDSCAPE	22x34
TRAFFIC	02893-21	02893-05	Truck Fiber Aerial to Underground Transitions	Truck Fiber Aerial to Underground Transitions	11/27/2023	LANDSCAPE	22x34
TRAFFIC	13501-01	13501-01	Speed Cushions Arrangement and Installation	Speed Cushions Arrangement and Installation	11/27/2023	LANDSCAPE	22x34
TRAFFIC	02893-19	16700-01	Communications Overview	Communications Overview	11/27/2023	LANDSCAPE	11x17
TRAFFIC	02893-08	16710-01	Pull Boxes	Pull Boxes	11/27/2023	LANDSCAPE	11x17
TRAFFIC	02893-11	16727-01	Loop Detector Installation Details	Loop Detector Installation Details	11/27/2023	LANDSCAPE	22x34
TRAFFIC	02893-10A	16730-01	Controller Foundations (Sheet 1 of 3)	Controller Foundations (Sheet 1 of 3)	11/27/2023	LANDSCAPE	22x34
TRAFFIC	02893-10B	16730-02	Controller Foundations (Sheet 2 of 3)	Controller Foundations (Sheet 2 of 3)	11/27/2023	LANDSCAPE	22x34
TRAFFIC	02893-10C	16730-03	Controller Foundations (Sheet 3 of 3)	Controller Foundations (Sheet 3 of 3)	11/27/2023	LANDSCAPE	22x34
TRAFFIC	02893-20	16737-01	Communications Service Box Details	Communications Service Box Details	11/27/2023	LANDSCAPE	11x17
TRAFFIC	02893-13	16738-01	Antenna Mounting Details	Antenna Mounting Details	11/27/2023	LANDSCAPE	11x17
TRAFFIC	02893-12	16742-01	Video Camera Mounting Details	Video Camera Mounting Details	11/27/2023	LANDSCAPE	11x17
TREE	01562-01	01562-01	Tree Protection General Requirements	Tree Protection General Requirements	11/27/2023	LANDSCAPE	11x17
TREE	01562-02	01562-02	Tree Protection Tree and Root Pruning	Tree Protection Tree and Root Pruning	11/27/2023	LANDSCAPE	11x17
TREE	01562-03	01562-03	Tree Protection/In Sidewalk Repairs in Parkway Areas	Tree Protection/In Sidewalk Repairs in Parkway Areas	11/27/2023	PORTRAIT	8.5x11
TREE	01562-04	01562-04	Tree Protection Zero Curb Cut	Tree Protection Zero Curb Cut	11/27/2023	LANDSCAPE	11x17
TREE	01562-05A	01562-05	Tree Protection Tunneling Requirements	Tree Protection Tunneling Requirements	11/27/2023	LANDSCAPE	11x17
TREE	01562-05B	01562-05	Tree Protection Tunneling Requirements	Tree Protection Tunneling Requirements	NA		
TREE	01562-06	01562-06	Tree Protection Trench Requirements	Tree Protection Trench Requirements	11/27/2023	LANDSCAPE	11x17
TREE	01562-07	01562-07	Tree Boarding	Tree Boarding	11/27/2023	PORTRAIT	8.5x11
TREE	02912-01	02912-01	Tree Root Barriers (Circular)	Tree Root Barriers (Circular)	11/27/2023	PORTRAIT	8.5x11





CITY OF HOUSTON STANDARD DETAILS SIZES AND ORIENTATION

CATEGORY	STANDARD DETAIL NO. (2022)	STANDARD DETAIL NO. (2023)	STANDARD DETAIL TITLE (2022)	STANDARD DETAIL TITLE (2023)	EFFECTIVE DATE	ORIENTATION	SIZE
TREE	02912-02	02912-02	Tree Root Barrier (Linear)	Tree Root Barrier (Linear)	11/27/2023	LANDSCAPE	11x17
WASTE WATER	02082-01	02082-01	Sanitary Sewer Shallow Manhole	Sanitary Sewer Shallow Manhole	10/1/2002	PORTRAIT	11x17
WASTE WATER	02082-02	02082-02	Sanitary Sewer 4'-0" Diameter Precast Concrete Manhole	Sanitary Sewer 4'-0" Diameter Precast Concrete Manhole	7/1/2010	PORTRAIT	11x17
WASTE WATER	02082-03	02082-03	Sanitary Sewer 5'-0" to 8'-0" Diameter Precast Concrete Manhole	Sanitary Sewer 5'-0" to 8'-0" Diameter Precast Concrete Manhole	7/1/2010	PORTRAIT	11x17
WASTE WATER	02082-04	02082-04	Sanitary Sewer Pile Supported Manhole for Unstable Subgrade	Sanitary Sewer Pile Supported Manhole for Unstable Subgrade	10/1/2002	LANDSCAPE	11x17
WASTE WATER	02082-05	02082-05	Sanitary Sewer Crushed Stone Supported Manhole for Wet Stable Trench	Sanitary Sewer Crushed Stone Supported Manhole for Wet Stable Trench	10/1/2002	PORTRAIT	11x17
WASTE WATER	02082-06	02082-06	Sanitary Sewer Manhole Vent for Sealed Manhole	Sanitary Sewer Manhole Vent for Sealed Manhole	7/1/2021	LANDSCAPE	22x34
WASTE WATER	02082-07	02082-07	Sanitary Sewer Corrosion Resistant Manhole for Force Main Discharge	Sanitary Sewer Corrosion Resistant Manhole for Force Main Discharge	10/1/2002	PORTRAIT	11x17
WASTE WATER	02082-08	02082-08	Sanitary Sewer Precast Concrete Manhole with Cast-In-Place Base	Sanitary Sewer Precast Concrete Manhole with Cast-In-Place Base	7/1/2010	LANDSCAPE	22x34
WASTE WATER	02082-09	02082-09	Sanitary Sewer Air Release or Air/ Vacuum Release Valve Manhole	Sanitary Sewer Air Release or Air/ Vacuum Release Valve Manhole	10/1/2002	PORTRAIT	11x17
WASTE WATER	02082N-02	02082N-02	Sanitary Sewer 4'-0" Diameter Precast Concrete Manhole Notes	Sanitary Sewer 4'-0" Diameter Precast Concrete Manhole Notes	10/1/2002	PORTRAIT	11x17
WASTE WATER	02082N-03	02082N-03	Sanitary Sewer 5'-0" to 8'-0" Diameter Precast Concrete Manhole Notes	Sanitary Sewer 5'-0" to 8'-0" Diameter Precast Concrete Manhole Notes	10/1/2002	LANDSCAPE	22x34
WASTE WATER	02083-01	02083-01	Sanitary Sewer 4'-0" Diameter Fiberglass Manhole	Sanitary Sewer 4'-0" Diameter Fiberglass Manhole	10/1/2002	PORTRAIT	11x17
WASTE WATER	02083-02	02083-02	Sanitary Sewer 5'-0" to 8'-0" Diameter Fiberglass Manhole	Sanitary Sewer 5'-0" to 8'-0" Diameter Fiberglass Manhole	10/1/2002	PORTRAIT	11x17
WASTE WATER	02083-03	02083-03	Sanitary Sewer Fiberglass Manhole with Cast-In-Place Base	Sanitary Sewer Fiberglass Manhole with Cast-In-Place Base	10/1/2002	LANDSCAPE	22x34
WASTE WATER	02083N-01	02083N-01	Sanitary Sewer 4'-0" Diameter Fiberglass Manhole Notes	Sanitary Sewer 4'-0" Diameter Fiberglass Manhole Notes	10/1/2002	PORTRAIT	11x17
WASTE WATER	02084-02A	02084-02A	Steel Adjusting Riser	Steel Adjusting Riser	NA	PORTRAIT	8.5x11
WASTE WATER	02084-02B	02084-02B	Steel Adjusting Riser	Steel Adjusting Riser	NA	PORTRAIT	8.5x11
WASTE WATER	02084-09A	02084-09A	Steel Adjusting Riser	Steel Adjusting Riser	NA	PORTRAIT	8.5x11
WASTE WATER	02084-09B	02084-09B	Steel Adjusting Riser	Steel Adjusting Riser	NA	PORTRAIT	8.5x11
WASTE WATER	02090-01	02090-01	Sanitary Sewer And Water Manhole Frame and Cover	Sanitary Sewer And Water Manhole Frame and Cover	7/1/2016	PORTRAIT	11x17
WASTE WATER	02091-01	02091-01	Non-Metallic Manhole Frame and Cover	Non-Metallic Manhole Frame and Cover	7/1/2021	PORTRAIT	8.5x11
WASTE WATER	02317-01	02317-01	Sanitary Sewer Embedment and Trench Zone Backfill for Dry or Wet Stable Trench	Sanitary Sewer Embedment and Trench Zone Backfill for Dry or Wet Stable Trench	7/1/2016	PORTRAIT	11x17
WASTE WATER	02317-02	02317-02	Sanitary or Storm Sewer Crushed Stone Foundation for Wet Stable Trench	Sanitary or Storm Sewer Crushed Stone Foundation for Wet Stable Trench	7/1/2019	LANDSCAPE	22x34
WASTE WATER	02317-03	02317-03	Sanitary or Storm Sewer Bedding and Backfill for Dry Stable Trench	Sanitary or Storm Sewer Bedding and Backfill for Dry Stable Trench	7/1/2019	LANDSCAPE	22x34
WASTE WATER	02317-08	02317-08	Sanitary Sewer Backfill of Shafts	Sanitary Sewer Backfill of Shafts	10/1/2002	PORTRAIT	11x17
WASTE WATER	02531-01	02531-01	Sanitary Sewer Sealing of Sliplining at Manhole	Sanitary Sewer Sealing of Sliplining at Manhole	10/1/2002	PORTRAIT	11x17
WASTE WATER	02531-02	02531-02	Sanitary Sewer Sealing of Cured-In-Place Liner at Manhole	Sanitary Sewer Sealing of Cured-In-Place Liner at Manhole	10/1/2002	PORTRAIT	11x17
WASTE WATER	02531-03	02531-03	Sanitary Sewer Ductile Iron Pipe Storm Sewer Crossing	Sanitary Sewer Ductile Iron Pipe Storm Sewer Crossing	10/1/2002	PORTRAIT	11x17
WASTE WATER	02531-04	02531-04	Sanitary Sewer Pipe Transition For 36" Sewer and Smaller	Sanitary Sewer Pipe Transition For 36" Sewer and Smaller	10/1/2002	PORTRAIT	11x17
WASTE WATER	02531-05	02531-05	Sanitary Sewer Installing Sanitary Sewers Crossing or Parallel to Water Lines	Sanitary Sewer Installing Sanitary Sewers Crossing or Parallel to Water Lines	7/1/2010	LANDSCAPE	22x34
WASTE WATER	02531-06	02531-06	Sanitary Sewer Sealing Penetration Through PVC-Lined Concrete Wall	Sanitary Sewer Sealing Penetration Through PVC-Lined Concrete Wall	10/1/2002	PORTRAIT	11x17
WASTE WATER	02531-07	02531-07	Sanitary Sewer Concrete Collar Detail for Connecting Existing Monolithic Sewers to Pipe Sewers	Sanitary Sewer Concrete Collar Detail for Connecting Existing Monolithic Sewers to Pipe Sewers	10/1/2002	PORTRAIT	11x17
WASTE WATER	02534-01	02534-01	Sanitary Sewer Service Reconnection for Liner Pipe	Sanitary Sewer Service Reconnection for Liner Pipe	10/1/2002	PORTRAIT	11x17
WASTE WATER	02534-02	02534-02	Sanitary Sewer Service Reconnection with Stack on New or Replacement Sewer	Sanitary Sewer Service Reconnection with Stack on New or Replacement Sewer	10/1/2002	PORTRAIT	11x17
WASTE WATER	02534-03	02534-03	Sanitary Sewer Service Line Reconnection for Storm Sewer Conflicts	Sanitary Sewer Service Line Reconnection for Storm Sewer Conflicts	10/1/2002	PORTRAIT	11x17
WASTE WATER	02534-03A	02534-03A	Sanitary Sewer Manhole Lining Payment Limits	Sanitary Sewer Manhole Lining Payment Limits	10/1/2002	LANDSCAPE	11x17
WASTE WATER	02534-04	02534-04	Sanitary Sewer Service Reconnection on New or Replacement Sewer	Sanitary Sewer Service Reconnection on New or Replacement Sewer	10/1/2002	PORTRAIT	11x17
WASTE WATER	02534-05	02534-05	Standard Cleanout Detail on Service Lead	Standard Cleanout Detail on Service Lead	7/1/2010	PORTRAIT	11x17
WATER	02082-10	02082-10	Standard LDWL Access Manhole Details	Standard LDWL Access Manhole Details	7/1/2021	LANDSCAPE	22x34
WATER	02082-11	02082-11	Standard LDWL SAF-T-Climb Details for Extra Depth Manhole	Standard LDWL SAF-T-Climb Details for Extra Depth Manhole	3/20/2018	LANDSCAPE	22x34





CITY OF HOUSTON STANDARD DETAILS SIZES AND ORIENTATION

CATEGORY	STANDARD DETAIL NO. (2022)	STANDARD DETAIL NO. (2023)	STANDARD DETAIL TITLE (2022)	STANDARD DETAIL TITLE (2023)	EFFECTIVE DATE	ORIENTATION	SIZE
WATER	02085-01	02085-01	Standard Plastic Meter Box for 5/8" and 1" Meters	Standard Plastic Meter Box for 5/8" and 1" Meters	7/1/2010	PORTRAIT	11x17
WATER	02085-02	02085-02	Location of Water Meter Box for 2" Diameter and Less	Location of Water Meter Box for 2" Diameter and Less	7/1/2010	PORTRAIT	11x17
WATER	02085-03	02085-03	Valve Box Detail	Valve Box Detail	7/1/2010	PORTRAIT	11x17
WATER	02090-01	02090-01	Sanitary Sewer And Water Manhole Frame and Cover	Sanitary Sewer And Water Manhole Frame and Cover	7/1/2016	PORTRAIT	11x17
WATER	02090-12	02090-12	Standard LDWL 48-Inch DIA Heavy Duty Manhole Frame and Cover Detail	Standard LDWL 48-Inch DIA Heavy Duty Manhole Frame and Cover Detail	3/20/2018	PORTRAIT	11x17
WATER	02317-04	02317-04	Water Distribution Main Bedding and Backfill for Open Cut Trenches	Water Distribution Main Bedding and Backfill for Open Cut Trenches	7/1/2010	PORTRAIT	11x17
WATER	02317-09	02317-09	Standard LDWL Excavation and Backfill Detail	Standard LDWL Excavation and Backfill Detail	7/1/2021	LANDSCAPE	22x34
WATER	02447-01	02447-01	Bedding and Backfill Auger Pit and Auger Hole	Bedding and Backfill Auger Pit and Auger Hole	7/1/2010	PORTRAIT	11x17
WATER	02502-01	02502-01	Standard Pipe Guard	Standard Pipe Guard	7/1/2010	PORTRAIT	11x17
WATER	02507-01	02507-01	Standard LDWL Prestressed Concrete Cylinder Pipe Details	Standard LDWL Prestressed Concrete Cylinder Pipe Details	3/20/2018	LANDSCAPE	22x34
WATER	02511-01	02511-01	Typical Pipe Offset Section for Water Lines	Typical Pipe Offset Section for Water Lines	7/1/2010	PORTRAIT	11x17
WATER	02511-02	02511-02	Thrust Block Detail for Water Lines (4-inch to 12-inch)	Thrust Block Detail for Water Lines (4-inch to 12-inch)	7/1/2010	PORTRAIT	11x17
WATER	02511-03	02511-03	Standard LDWL Drain Line Valve Details	Standard LDWL Drain Line Valve Details	3/20/2018	LANDSCAPE	22x34
WATER	02512-01	02512-01	Typical 3/4" Through 2" Service Arrangements	Typical 3/4" Through 2" Service Arrangements	7/1/2016	PORTRAIT	11x17
WATER	02512-02	02512-02	Service Taps	Service Taps	7/1/2010	PORTRAIT	11x17
WATER	02512-03	02512-03	Back Tap on Existing Line	Back Tap on Existing Line	7/1/2016	PORTRAIT	11x17
WATER	02512-04	02512-04	Standard Tap to Existing Steel Main	Standard Tap to Existing Steel Main	7/1/2010	PORTRAIT	11x17
WATER	02517-01	02517-01	LDWL Tunnel and Casing Details for Water Lines 24-inch and Larger	LDWL Tunnel and Casing Details for Water Lines 24-inch and Larger	7/1/2021	LANDSCAPE	22x34
WATER	02518-01	02518-01	Standard LDWL Steel Pipe Details (Sheet 1 of 2)	Standard LDWL Steel Pipe Details (Sheet 1 of 2)	3/20/2018	LANDSCAPE	22x34
WATER	02518-02	02518-02	Standard LDWL Steel Pipe Details (Sheet 2 of 2)	Standard LDWL Steel Pipe Details (Sheet 2 of 2)	3/20/2018	LANDSCAPE	22x34
WATER	02520-01	02520-01	Standard Fire Hydrant Detail	Standard Fire Hydrant Detail	7/1/2021	PORTRAIT	8.5x11
WATER	02522-01	02522-01	Standard LDWL Butterfly Valve and Operator Manhole Details	Standard LDWL Butterfly Valve and Operator Manhole Details	3/20/2018	LANDSCAPE	22x34
WATER	02523-01	02523-01	Reduced Pressure Backflow Preventer (RPBP)	Reduced Pressure Backflow Preventer (RPBP)	7/1/2010	PORTRAIT	11x17
WATER	02524-01	02524-01	Permanent Blow-Off-Detail	Permanent Blow-Off-Detail	7/1/2010	PORTRAIT	11x17
WATER	02524-02	02524-02	LDWL Combination Air Valve Assembly in Service Manhole Details	LDWL Combination Air Valve Assembly in Service Manhole Details	3/20/2018	LANDSCAPE	22x34
WATER	02524-03	02524-03	LDWL Air Valve Assembly in Service Manhole Detail	LDWL Air Valve Assembly in Service Manhole Detail	7/1/2021	LANDSCAPE	22x34
WATER	02526-01	02526-01	Typical Meter Settings	Typical Meter Settings	7/1/2010	PORTRAIT	11x17
WATER	02526-02	02526-02	Typical Piping Arrangement 3" Turbine/Compound Meter Standard Service	Typical Piping Arrangement 3" Turbine/Compound Meter Standard Service	7/1/2010	LANDSCAPE	11x17
WATER	02526-03	02526-03	Typical Piping Arrangement 4" Turbine/Compound Meter Standard Service	Typical Piping Arrangement 4" Turbine/Compound Meter Standard Service	7/1/2010	LANDSCAPE	22x34
WATER	02526-04	02526-04	Typical Piping Arrangement 6" Turbine/Compound Meter Standard Service	Typical Piping Arrangement 6" Turbine/Compound Meter Standard Service	7/1/2010	LANDSCAPE	22x34
WATER	02526-05	02526-05	Typical Piping Arrangement 8" Turbine Meter Standard Service	Typical Piping Arrangement 8" Turbine Meter Standard Service	7/1/2010	LANDSCAPE	11x17
WATER	02526-06	02526-06	Typical Piping Arrangement 10" Turbine Meter Standard Service	Typical Piping Arrangement 10" Turbine Meter Standard Service	7/1/2010	LANDSCAPE	11x17
WATER	02526-07	02526-07	Typical Piping Arrangement 4" & 6" Fire Service Turbine Meter Standard Service	Typical Piping Arrangement 4" & 6" Fire Service Turbine Meter Standard Service	7/1/2010	LANDSCAPE	11x17
WATER	02526-08	02526-08	Typical Piping Arrangement 8" Fire Service Turbine Meter Standard Service	Typical Piping Arrangement 8" Fire Service Turbine Meter Standard Service	7/1/2010	LANDSCAPE	22x34
WATER	02526-09	02526-09	Typical Piping Arrangement 10" Fire Service Turbine Meter Standard Service	Typical Piping Arrangement 10" Fire Service Turbine Meter Standard Service	7/1/2010	LANDSCAPE	22x34
WATER	02526-10	02526-10	Typical Service Line and Ariser Piping to Meter Vaults	Typical Service Line and Ariser Piping to Meter Vaults	7/1/2010	LANDSCAPE	22x34
WATER	02526-11	02526-11	Structural Details Turbine/Compound Meter Standard Service	Structural Details Turbine/Compound Meter Standard Service	7/1/2010	LANDSCAPE	22x34
WATER	02526-12	02526-12	Structural Details Turbine/Combine Meter Standard Service	Structural Details Turbine/Combine Meter Standard Service	7/1/2010	LANDSCAPE	22x34
WATER	02526-13	02526-13	Structural Plans Fire Service Meters	Structural Plans Fire Service Meters	7/1/2010	LANDSCAPE	11x17
WATER	02526-14	02526-14	Schematic Irrigation Tee Off Domestic 3/4" Thru 2"	Schematic Irrigation Tee Off Domestic 3/4" Thru 2"	7/1/2010	PORTRAIT	11x17
WATER	02526-15	02526-15	Schematic Basement Installation Electromagnetic Meter 3" Thru 10"	Schematic Basement Installation Electromagnetic Meter 3" Thru 10"	7/1/2010	PORTRAIT	11x17



CITY OF HOUSTON STANDARD DETAILS SIZES AND ORIENTATION

CATEGORY	STANDARD DETAIL NO. (2022)	STANDARD DETAIL NO. (2023)	STANDARD DETAIL TITLE (2022)	STANDARD DETAIL TITLE (2023)	EFFECTIVE DATE	ORIENTATION	SIZE
WATER	02526-16	02526-16	Schematic Above Ground Fire Rated Compound Meter Installation 3" and Larger	Schematic Above Ground Fire Rated Compound Meter Installation 3" And Larger	7/1/2010	PORTRAIT	11x17
WATER	02526-17	02526-17	Schematic Above Ground Electromagnetic Meter Installation 3" and Larger	Schematic Above Ground Electromagnetic Meter Installation 3" And Larger	7/1/2010	PORTRAIT	11x17
WATER	02613-01	02613-01	Standard LDWL Bar Wrapped Cylinder Pipe Joint Detail	Standard LDWL Bar Wrapped Cylinder Pipe Joint Detail	3/20/2018	PORTRAIT	11x17
WATER	15640-01	15640-01	Standard LDWL Cathodic Protection Details for Joint Bonding (Sheet 1 of 2)	Standard LDWL Cathodic Protection Details for Joint Bonding (Sheet 1 of 2)	3/20/2018	LANDSCAPE	22x34
WATER	15640-02	15640-02	Standard LDWL Cathodic Protection Details for Joint Bonding (Sheet 2 of 2)	Standard LDWL Cathodic Protection Details for Joint Bonding (Sheet 2 of 2)	3/20/2018	LANDSCAPE	22x34
WATER	15641-01	15641-01	Standard LDWL Cathodic Protection Details for Test Stations (Sheet 1 of 3)	Standard LDWL Cathodic Protection Details for Test Stations (Sheet 1 of 3)	7/1/2021	LANDSCAPE	22x34
WATER	15641-02	15641-02	Standard LDWL Cathodic Protection Details for Test Stations (Sheet 2 of 3)	Standard LDWL Cathodic Protection Details for Test Stations (Sheet 2 of 3)	7/1/2021	LANDSCAPE	22x34
WATER	15641-03	15641-03	Standard LDWL Cathodic Protection Details for Test Stations (Sheet 3 of 3)	Standard LDWL Cathodic Protection Details for Test Stations (Sheet 3 of 3)	7/1/2021	LANDSCAPE	22x34
WATER	16124-01	16124-01	Complete Utility Locating System Sample Plan (Water)	Complete Utility Locating System Sample Plan (Water)	7/1/2021	PORTRAIT	8.5x11
WATER	16124-02	16124-02	Complete Utility Locating System Water Service Detail	Complete Utility Locating System Water Service Detail	7/1/2021	PORTRAIT	8.5x11
WATER	16124-03	16124-03	Complete Utility Locating System Hydrant Detail	Complete Utility Locating System Hydrant Detail	7/1/2021	PORTRAIT	8.5x11
WATER	16640-01	16640-01	Standard LDWL Cathodic Protection Details for Test Stations & Anodes	Standard LDWL Cathodic Protection Details for Test Stations & Anodes	7/1/2021	LANDSCAPE	22x34
WATER	16640-02	16640-02	Standard LDWL Cathodic Protection Rectifier & Deep Anode Ground Bed Details (Sheet 1 of 2)	Standard LDWL Cathodic Protection Rectifier & Deep Anode Ground Bed Details (Sheet 1 of 2)	3/20/2018	LANDSCAPE	22x34
WATER	16640-03	16640-03	Standard LDWL Cathodic Protection Rectifier & Deep Anode Ground Bed Details (Sheet 2 of 2)	Standard LDWL Cathodic Protection Rectifier & Deep Anode Ground Bed Details (Sheet 2 of 2)	3/20/2018	LANDSCAPE	22x34