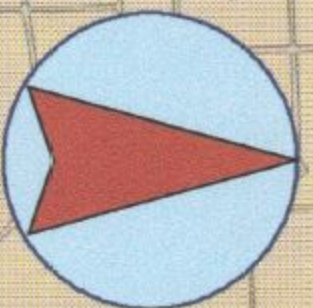
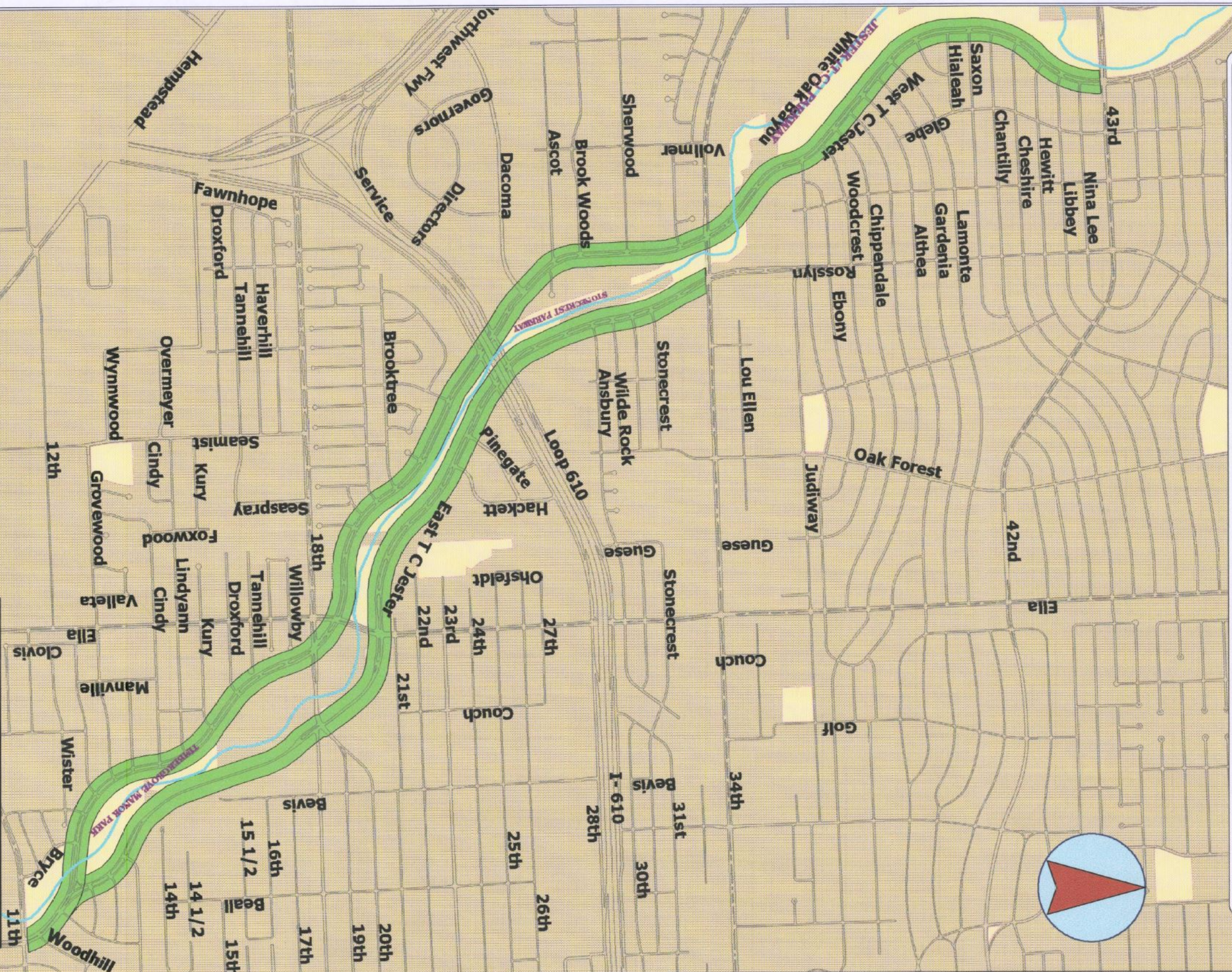







T C Jester Scenic Right of Way



T. C. Jester Scenic Right of Way
 Designated by Motion No. 80-351, effective May 8, 1980.
 Affects all signs visible from and located on premises with
 frontage on East & West T. C. Jester

T. C. Jester Scenic R.O.W.

	Roadway		City Limits
	White Oak Bayou		Public Parks
	T. C. Jester Scenic R.O.W.		

