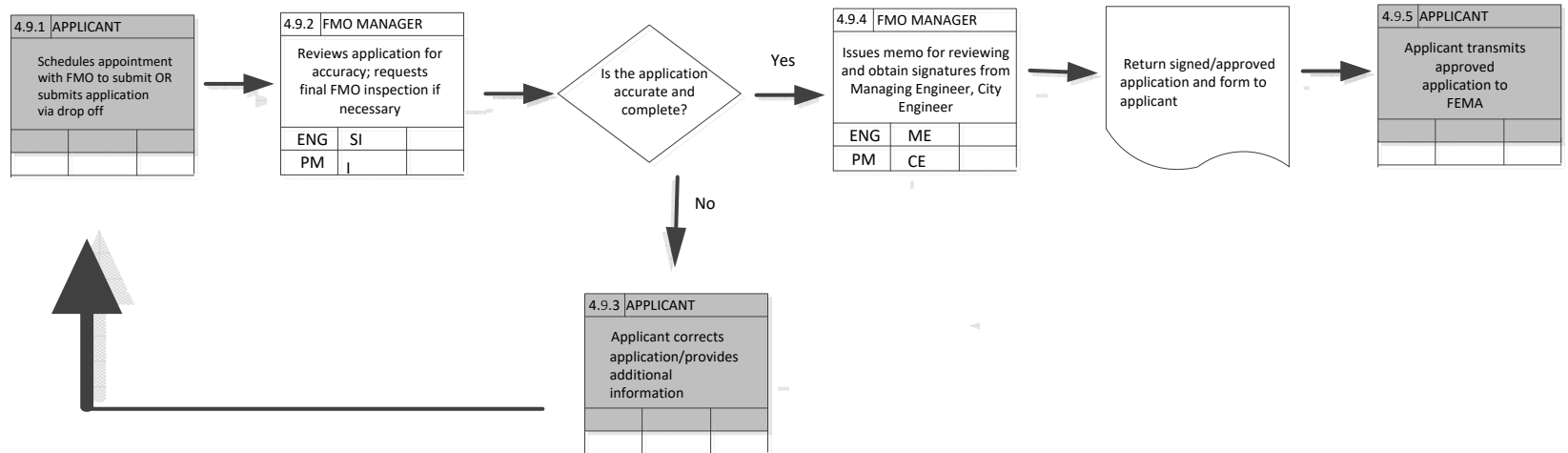
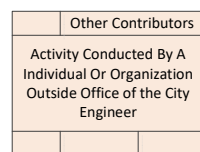
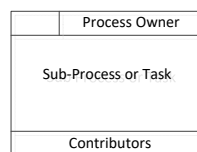
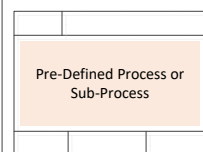


PROCESS 4.9– LETTER OF MAP CHANGE (CLOMR, LOMR-F, LOMA) PROCESS



CITY OF HOUSTON – HOUSTON PUBLIC WORKS – OFFICE OF THE CITY ENGINEER

Legend



Contributors

AD= Assistant Director
 ME = Managing Engineer
 AS= Administrative Specialist
 GE=Graduate Engineer
 SPM=Senior Project Mgr.
 APM=Assistant Project Manager

PM=Project Manager
 SI=Senior Inspector
 I=Inspector
 PC=Project Controls
 OS=Office Supervisor
 ACI=Asst. Chief Inspector
 CE=City Engineer

DC=Document Controls
 AA=Administrative Asst.
 PT=Project Technician
 SAC=Senior Acct Clerk
 RS=Record Supervisor
 SE=Supervising Engineer
 E=Engineer

