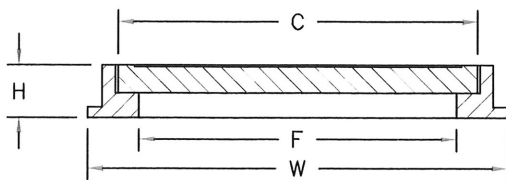
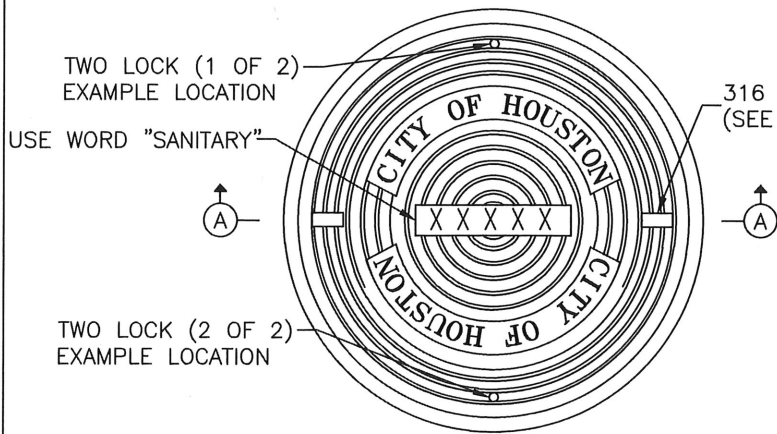
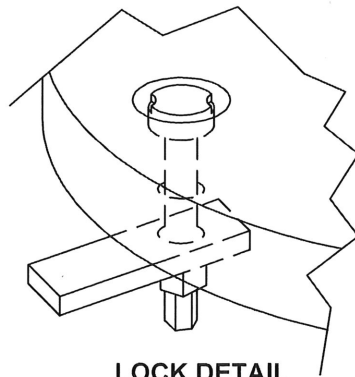


ASSEMBLY VIEW

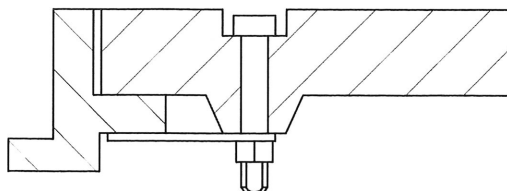


SECTION A-A

| COVER SIZE | C | F | H | W |
|------------|----------|------------|----------|----------|
| | IN (MAX) | IN (EXACT) | IN (MAX) | IN (MAX) |
| 32" | 35.75 | 30.00 | 5.00 | 41.00 |

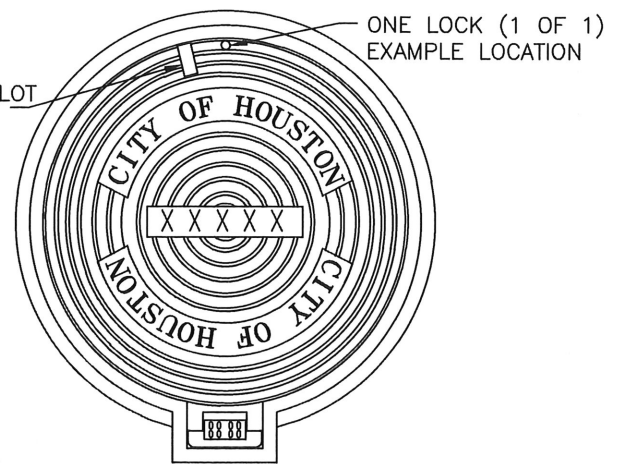


LOCK DETAIL



LOCK CUT AWAY SECTION DETAIL

ASSEMBLY VIEW - W/ HINGE



TRAFFIC APPROACH DIRECTION (SEE NOTE 5)

NOTES:

1. FRAME AND COVER MEETS OR EXCEEDS REQUIREMENTS FOR CITY OF HOUSTON SPECIFICATION 02091 – NON METALLIC FRAMES, GRATES, RINGS, AND COVERS.
2. COVER SHALL HAVE A MINIMUM OF ONE (1) 316 STAINLESS STEEL PICK BAR SLOT MOLDED IN THE COMPOSITE MATRIX.
3. LOCK AND BOLT SHALL BE 316 STAINLESS STEEL AND BE $\frac{1}{4}$ " TURN CAM/PADDLE TYPE.
4. MANHOLE DESIGNS WITHOUT HINGES MUST INCLUDE A MINIMUM OF TWO (2) LOCKS LOCATED ON OPPOSITE EDGES. DESIGNS WITH A HINGE MUST INCLUDE A MINIMUM OF ONE (1) LOCK LOCATED OPPOSITE EDGE OF THE HINGE MECHANISM.
5. MANHOLE INSTALLATIONS WITH HINGES SHALL ORIENT HINGES PARALLEL TO TRAFFIC FLOW DIRECTION. THE HINGE WILL BE LOCATED ON THE APPROACHING DIRECTION OF TRAFFIC.

CITY OF HOUSTON HOUSTON PUBLIC WORKS

NON-METALLIC MANHOLE FRAME AND COVER

(NOT TO SCALE)

APPROVED BY:

Suhail Kanwar
CITY ENGINEER

APPROVED BY:

Carol Fiedler
DIRECTOR OF
HOUSTON PUBLIC WORKS

EFF DATE: JUL-01-2021

DWG NO: 02091-01