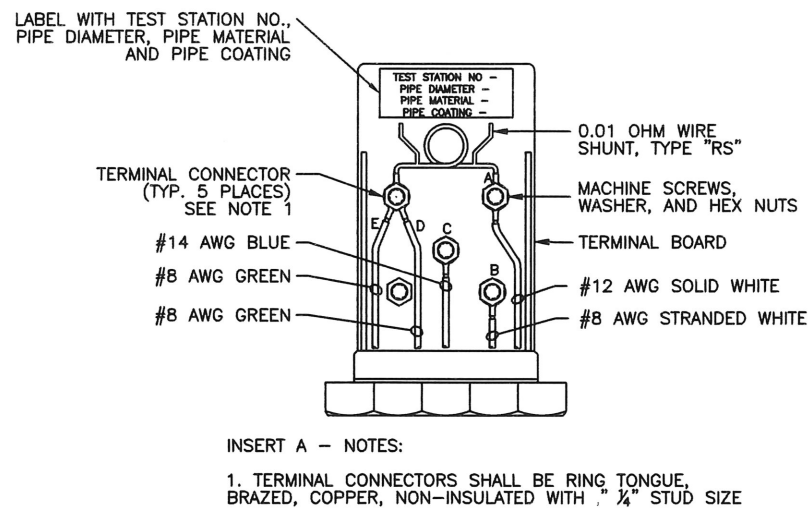
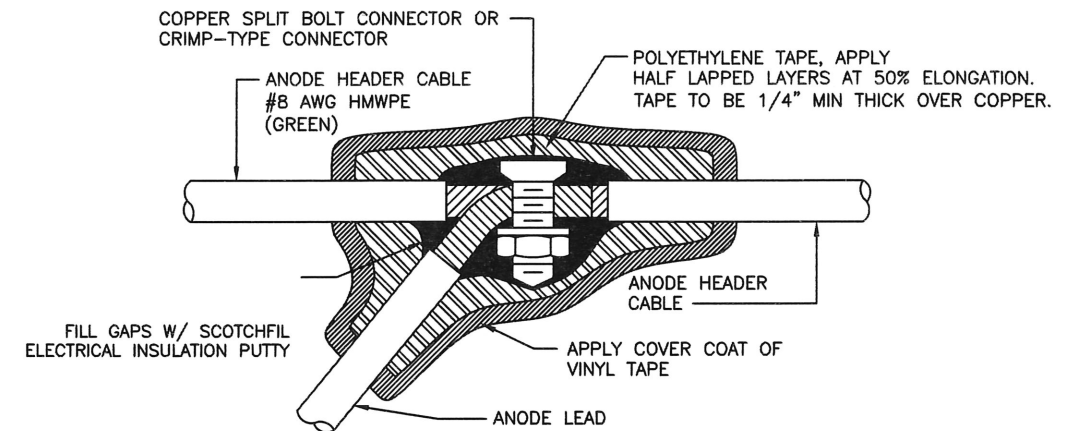


- WIRE CODING:  
 \* WIRES A & B ARE WHITE  
 \* WIRE A IS #12 AWG TW SOLID SINGLE CONDUCTOR WIRE  
 \* WIRE B IS #8 AWG TW STRANDED SINGLE CONDUCTOR WIRE  
 \* WIRE C IS BLUE #14 AWG/HMWPE LEAD WIRE TO REFERENCE ELECTRODE  
 \* WIRES D & E ARE GREEN #8 AWG ANODE LEAD WIRE TO ANODE GROUND BED



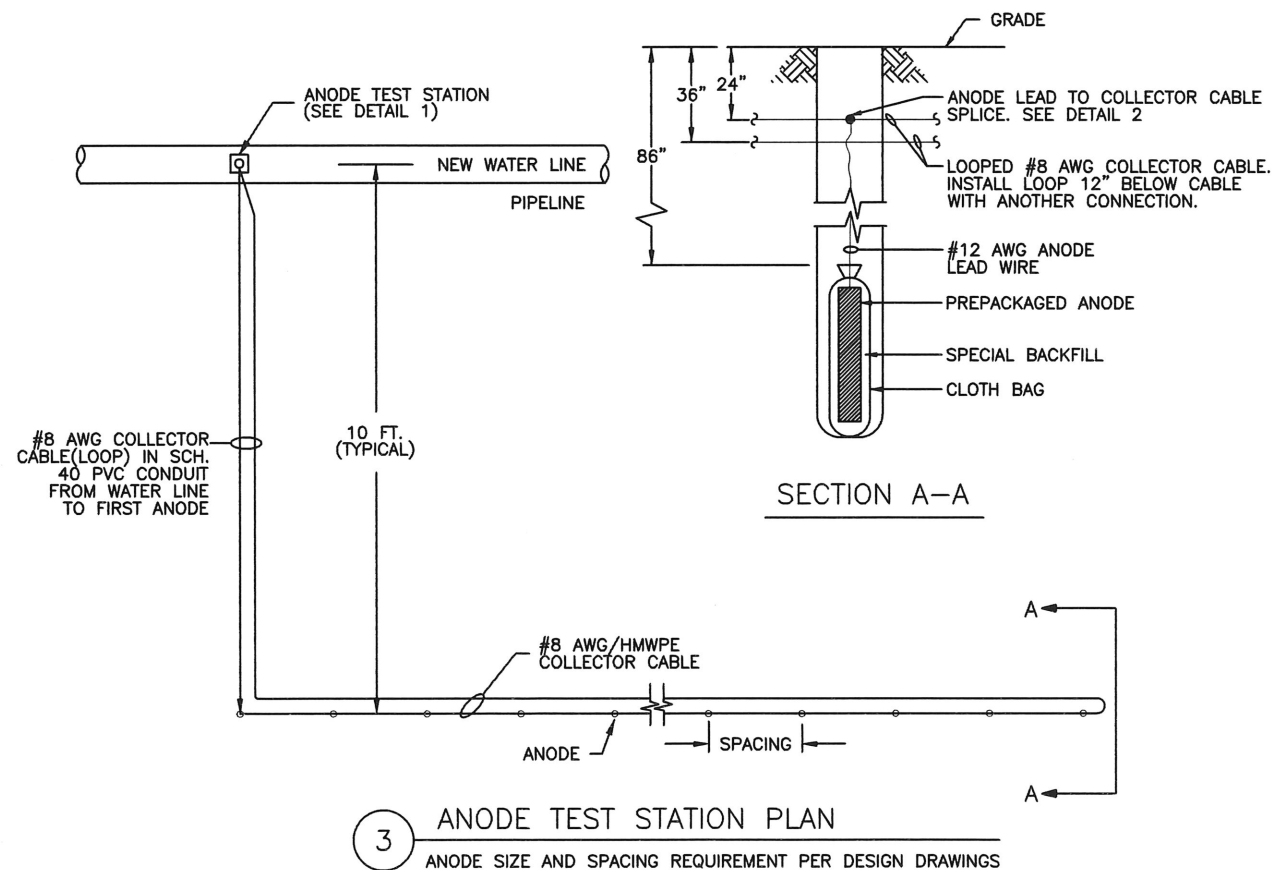
- INSERT A - NOTES:  
 1. TERMINAL CONNECTORS SHALL BE RING TONGUE, BRAZED, COPPER, NON-INSULATED WITH 1/4" STUD SIZE

INSERT "A"

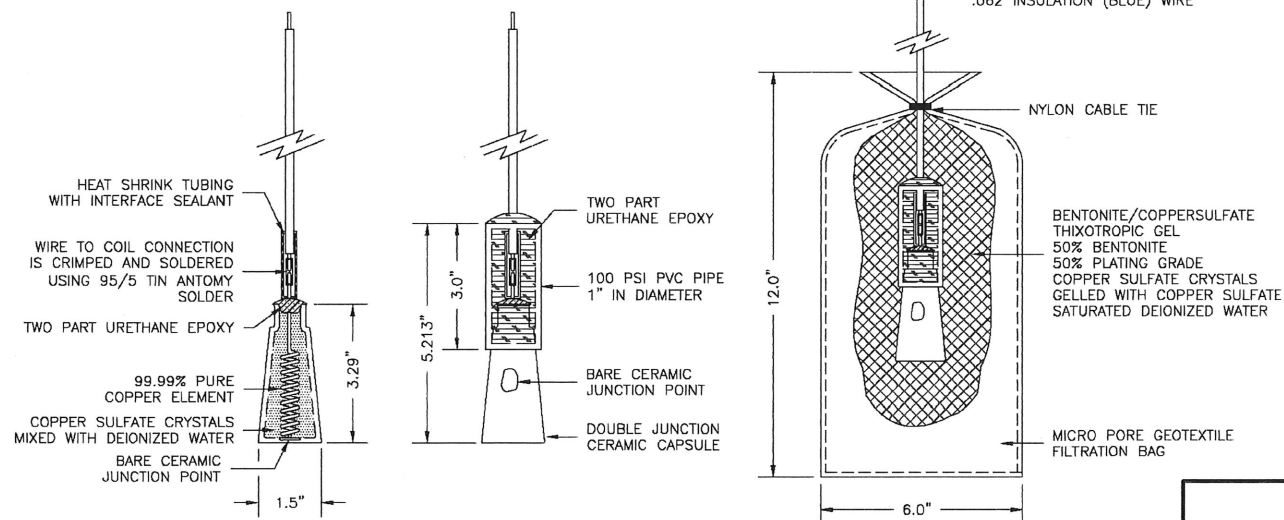


- DETAIL 2 - NOTES:  
 1. MAKE SPLICE WATERPROOF  
 A. SMOOTH ALL IRREGULAR SURFACES WITH ELECTRICAL INSULATION PUTTY.  
 B. APPLY 2 LAYERS OF HALF LAPPED RUBBER SPLICING TAPE.  
 C. APPLY 2 LAYERS OF HALF LAPPED VINYL ELECTRICAL TAPE.  
 2. NUMBER OF WIRES MAY VARY PER SPLICE

2 SPLICE DETAIL



3 ANODE TEST STATION PLAN  
 ANODE SIZE AND SPACING REQUIREMENT PER DESIGN DRAWINGS



4 Cu/CuSO4 PERMACELL PLUS  
 STATIONARY REFERENCE CELL

CITY OF HOUSTON HOUSTON PUBLIC WORKS	
STANDARD LDWL CATHODIC PROTECTION DETAILS FOR TEST STATIONS & ANODES (NOT TO SCALE)	
APPROVED BY: <i>Suhail Kanwar</i> CITY ENGINEER	APPROVED BY: <i>Paul Haddock</i> DIRECTOR OF HOUSTON PUBLIC WORKS
EFF DATE: JUL - 01 - 2021	DWG NO: 16640-01