

DETAIL 3 - NOTES:

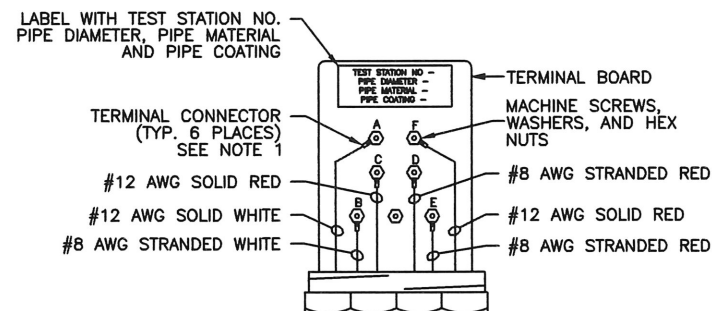
1. TEST STATION SHALL BE MOUNTED DIRECTLY ABOVE THE NEW WATER LINE.
2. FOR MORE THAN TWO (2) FOREIGN LINES, INSTALL A COTTBOX TYPE TEST STATION. (UP TO 20 TERMINALS)

### FLUSH MOUNTED FOREIGN LINE TEST STATION

3

#### WIRING CODE:

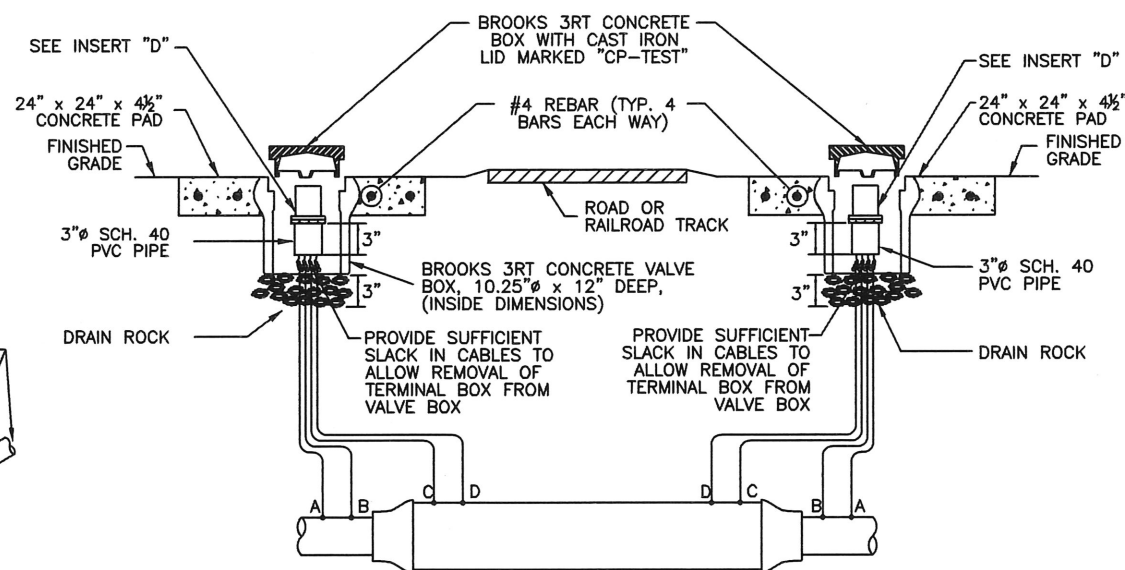
- \* WIRES A & B ARE WHITE
- \* WIRES C, D, E & F ARE RED
- \* WIRES A, C, F ARE #12 AWG TW SOLID COPPER WIRE
- \* WIRES B, D, E ARE #8 AWG TW STRANDED COPPER WIRE
- \* RED WIRES ATTACHED TO FOREIGN OWNED PIPE
- \* WHITE WIRES ATTACHED TO NEW PIPE



INSERT C - NOTES:

1. TERMINAL CONNECTORS SHALL BE RING TONGUE, BRAZED, COPPER, NON-INSULATED WITH 1/4\"

INSERT "C"



DETAIL 4 - NOTES:

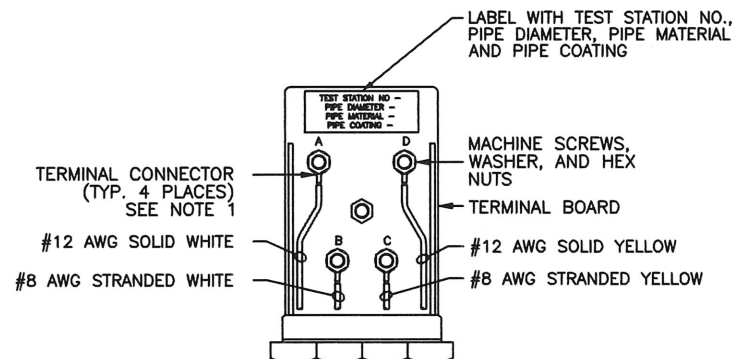
1. FOR PARALLEL CASED CROSSINGS, INSTALL A COTTBOX TYPE TEST STATION. (UP TO 20 TERMINALS)

### FLUSH MOUNTED CASED CROSSING TEST STATION

4

#### WIRE CODING:

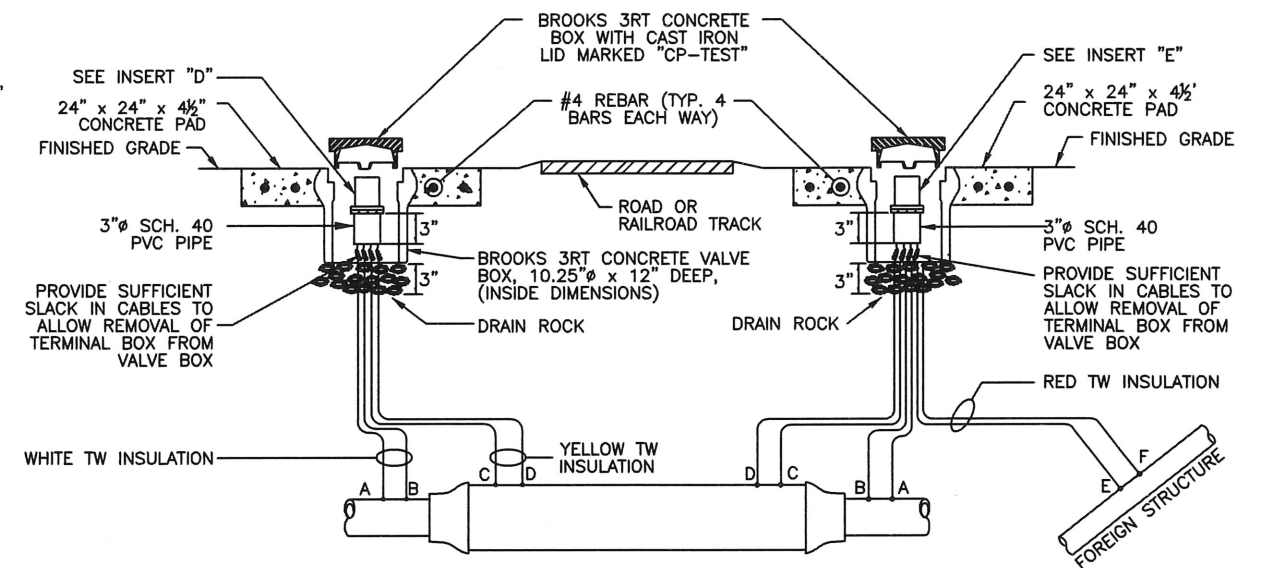
- \* WIRES A & B ARE WHITE, WIRES C & D ARE YELLOW
- \* WIRES A & D ARE #12 AWG TW SOLID SINGLE CONDUCTOR WIRE
- \* WIRES B & C ARE #8 AWG TW STRANDED SINGLE CONDUCTOR
- \* YELLOW WIRES ATTACHED TO CASING
- \* WHITE WIRES ATTACHED TO PROTECTED OR NEW PIPE



INSERT D - NOTES:

1. TERMINAL CONNECTORS SHALL BE RING TONGUE, BRAZED, COPPER, NON-INSULATED WITH 1/4\"

INSERT "D"



DETAIL 5 - NOTES:

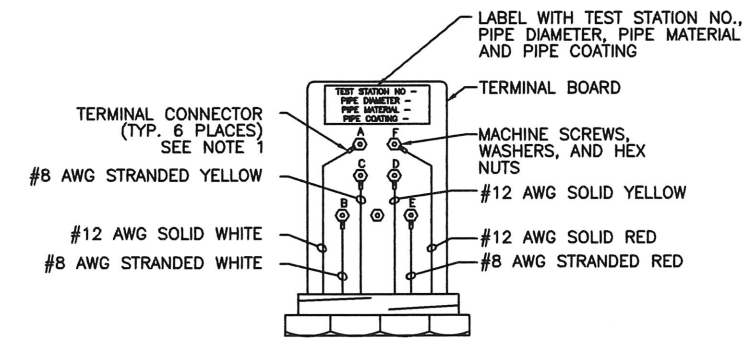
1. TEST STATION SHALL BE MOUNTED DIRECTLY ABOVE THE NEW WATER LINE.
2. FOR MORE THAN ONE (1) FOREIGN LINE, INSTALL A COTTBOX TYPE TEST STATION. (UP TO 20 TERMINALS)

### FLUSH MOUNTED CASED CROSSING AND FOREIGN LINE TEST STATION

5

#### WIRE CODING:

- \* WIRES A & B ARE WHITE, WIRES C & D ARE YELLOW
- \* WIRES E & F ARE RED
- \* WIRES A, D & F ARE #12 AWG TW SOLID SINGLE CONDUCTOR WIRE
- \* WIRES B, C & E ARE #8 AWG TW STRANDED SINGLE CONDUCTOR
- \* WHITE WIRES ATTACHED TO PROTECTED OR NEW PIPE
- \* YELLOW WIRES ATTACHED TO CASING
- \* RED WIRES ATTACHED TO FOREIGN OWNED PIPE



INSERT E - NOTES:

1. TERMINAL CONNECTORS SHALL BE RING TONGUE, BRAZED, COPPER, NON-INSULATED WITH 1/4\"

INSERT "E"

## CITY OF HOUSTON

HOUSTON PUBLIC WORKS

### STANDARD LDWL CATHODIC PROTECTION DETAILS FOR TEST STATIONS (SHEET 2 OF 3) (NOT TO SCALE)

APPROVED BY:

*Sehail Kanwar*  
CITY ENGINEER

APPROVED BY:

*Carl H. H. H.*  
DIRECTOR OF  
HOUSTON PUBLIC WORKS

EFF DATE: JUL - 01 - 2021

DWG NO: 15641-02