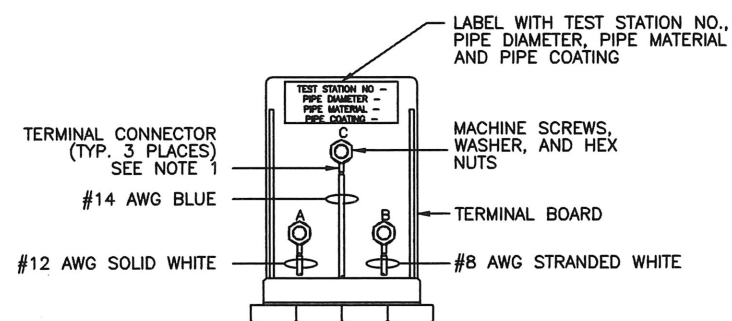


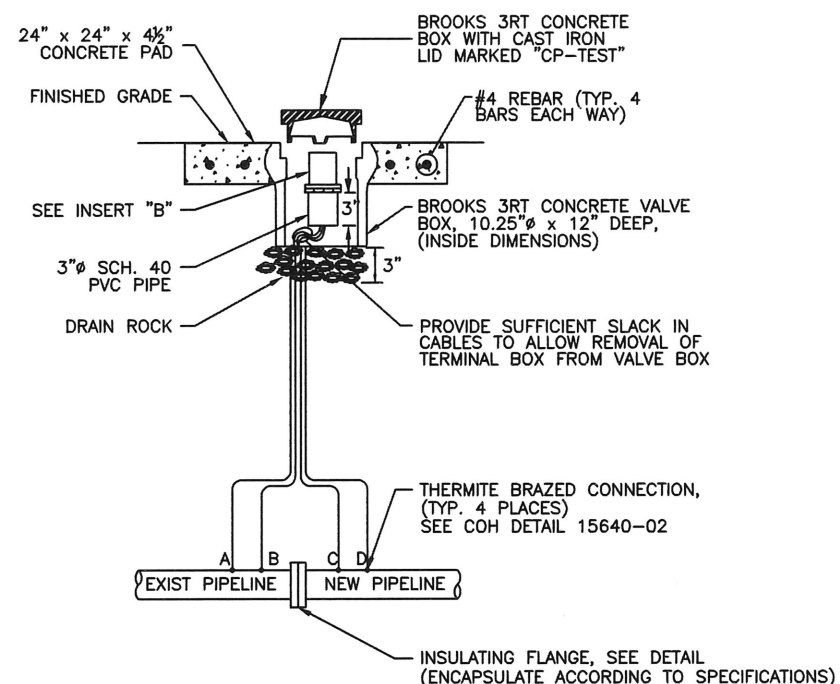
1 FLUSH MOUNTED POTENTIAL TEST STATION

- WIRE CODING:
- * WIRES A & B ARE WHITE, WIRE C IS BLUE
 - * WIRE A IS #12 AWG TW SOLID SINGLE CONDUCTOR WIRE
 - * WIRE B IS #8 AWG TW STRANDED SINGLE CONDUCTOR
 - * WIRES C IS #14 AWG WITH HMWPE INSULATION



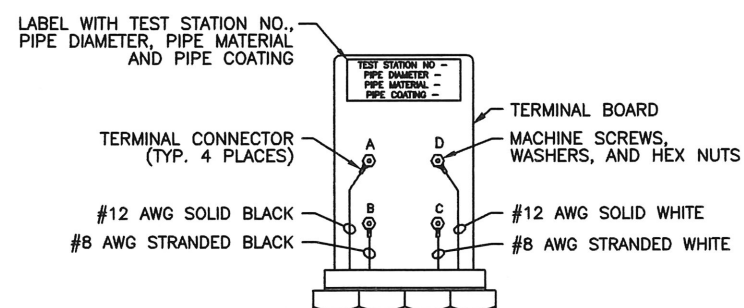
- INSERT A - NOTES:
1. TERMINAL CONNECTORS SHALL BE RING TONGUE, BRAZED, COPPER, NON-INSULATED WITH 1/4" STUD SIZE

INSERT "A"



2 FLUSH MOUNTED FLANGE ISOLATION TEST STATION

- WIRE CODING:
- * WIRES A & B ARE BLACK, WIRES C & D ARE WHITE
 - * WIRES A & D ARE #12 AWG TW SOLID SINGLE CONDUCTOR WIRE
 - * WIRES B & C ARE #8 AWG TW STRANDED SINGLE CONDUCTOR
 - * BLACK WIRES ATTACHED TO UNPROTECTED OR EXISTING PIPE
 - * WHITE WIRES ATTACHED TO PROTECTED OR NEW PIPE



- INSERT B - NOTES:
1. TERMINAL CONNECTORS SHALL BE RING TONGUE, BRAZED, COPPER, NON-INSULATED WITH 1/4" STUD SIZE

INSERT "B"

CITY OF HOUSTON HOUSTON PUBLIC WORKS	
STANDARD LDWL CATHODIC PROTECTION DETAILS FOR TEST STATIONS (SHEET 1 OF 3) (NOT TO SCALE)	
APPROVED BY: <i>Suhail Kanwar</i> CITY ENGINEER	APPROVED BY: <i>Carl Haddock</i> DIRECTOR OF HOUSTON PUBLIC WORKS
EFF DATE: JUL - 01 - 2021	DWG NO: 15641-01