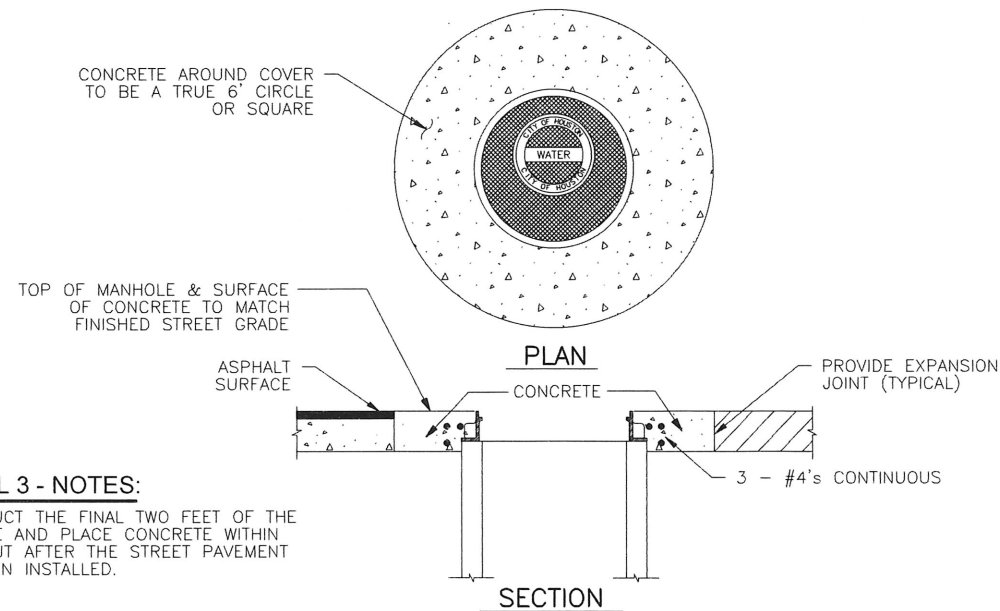


1 ACCESS MANWAY IN ACCESS MANHOLE
(FOR WATER LINES 36-INCH TO 96-INCH DIAMETER)

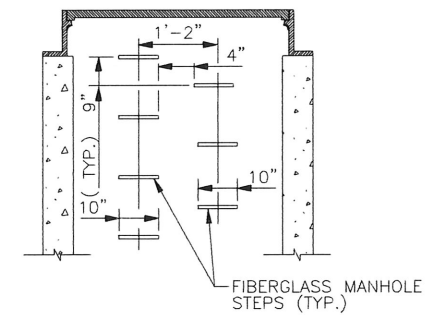


3 MANHOLE CONCRETE COLLAR DETAIL

- DETAIL 3 - NOTES:**
1. CONSTRUCT THE FINAL TWO FEET OF THE MANHOLE AND PLACE CONCRETE WITHIN BLOCKOUT AFTER THE STREET PAVEMENT HAS BEEN INSTALLED.

DETAIL 1 - NOTES:

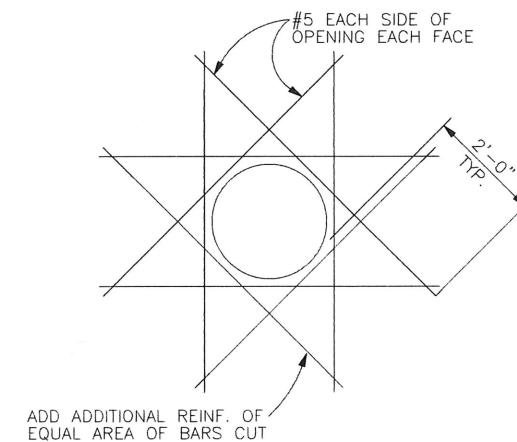
1. PROVIDE RAM-NEK OR APPROVED EQUAL BETWEEN PRECAST SEGMENTS OF THE MANHOLE.
2. FOR MANHOLES DEEPER THAN 20 FEET, SAFETY CLIMBING RAIL MUST BE PROVIDED (SAF-T-CLIMB OR APPROVED EQUAL).
3. FOR PAVEMENT REPAIR, SEE COH STANDARD DETAILS 02902-01 & 02902-02.
4. PROVIDE AN APPROVED PETROLATUM BASED TAPE ENCAPSULATING ALL BOLTS IN ACCESS MANHOLE.



DETAIL 2 - NOTES:

1. PROVIDE MODEL PS1-PF STEPS AS MANUFACTURED BY M.A. INDUSTRIES INC. OR APPROVED EQUAL.
2. BOTTOM MANHOLE STEP SHALL BE NO HIGHER THAN 12\"/>

2 MANHOLE STEP DETAIL



4 SERVICE MANHOLE REINFORCEMENT DETAIL

CITY OF HOUSTON HOUSTON PUBLIC WORKS	
STANDARD LDWL ACCESS MANHOLE DETAILS	
(NOT TO SCALE)	
APPROVED BY: <i>Suhail Kanwar</i> CITY ENGINEER	APPROVED BY: <i>Carl Skulda</i> DIRECTOR OF HOUSTON PUBLIC WORKS
EFF DATE: JULY - 01 - 2021	DWG NO: 02082-10