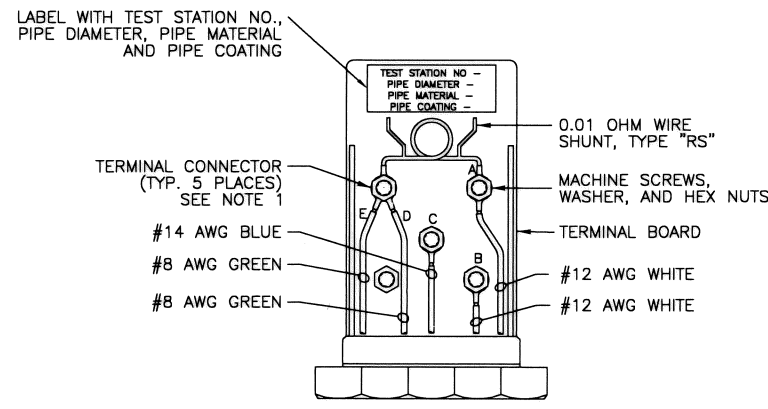
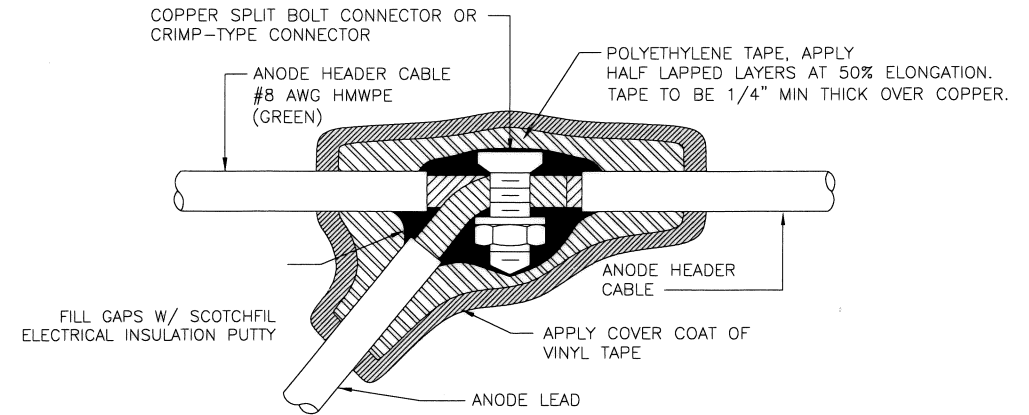


WIRE CODING:  
 \* WIRES A & B ARE WHITE  
 \* WIRES A & B ARE #12 AWG TW SOLID SINGLE CONDUCTOR WIRE  
 \* WIRE C IS BLUE #14 AWG/HMWPE LEAD WIRE TO REFERENCE ELECTRODE  
 \* WIRE D & E ARE GREEN #8 AWG ANODE LEAD WIRE TO ANODE GROUND BED

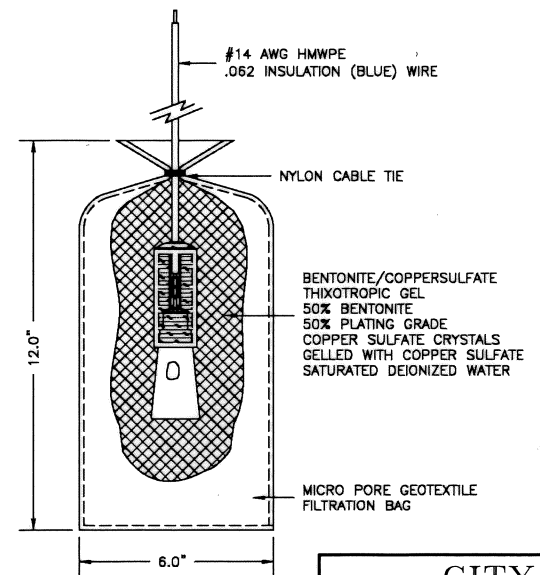
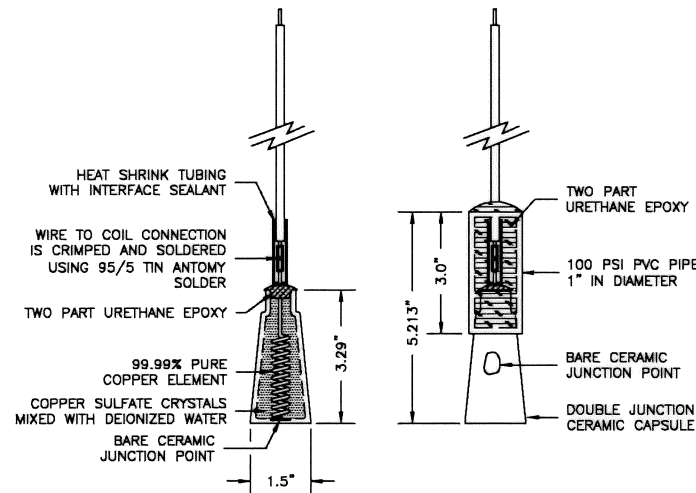


INSERT A - NOTES:  
 1. TERMINAL CONNECTORS SHALL BE RING TONGUE, BRAZED, COPPER, NON-INSULATED WITH 1/4" STUD SIZE  
 - FOR WIRE SIZE 14-10 AWG, USE THOMAS & BETTS 54101 OR APPROVED EQUAL.  
 - FOR WIRE SIZE 8 AWG, USE THOMAS & BETTS 54130 OR APPROVED EQUAL.



ANODE SIZE AND SPACING REQUIREMENT PER DESIGN DRAWINGS

INSERT "A"



<b>CITY OF HOUSTON</b> HOUSTON PUBLIC WORKS	
STANDARD LDWL CATHODIC PROTECTION DETAILS FOR TEST STATIONS & ANODES (NOT TO SCALE)	
APPROVED BY:  ACTING CITY ENGINEER	APPROVED BY:  DIRECTOR OF HOUSTON PUBLIC WORKS
EFF DATE: MAR-20-2018	DWG NO: 16640-01