

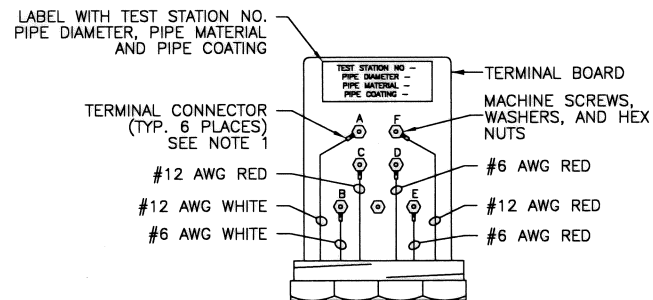
DETAIL 3 - NOTES:

1. TEST STATION SHALL BE MOUNTED DIRECTLY ABOVE THE NEW WATER LINE.
2. FOR MORE THAN TWO (2) FOREIGN LINES, INSTALL A COTTBOX TYPE TEST STATION. (UP TO 20 TERMINALS)

**3 FLUSH MOUNTED FOREIGN LINE TEST STATION**

WIRING CODE:

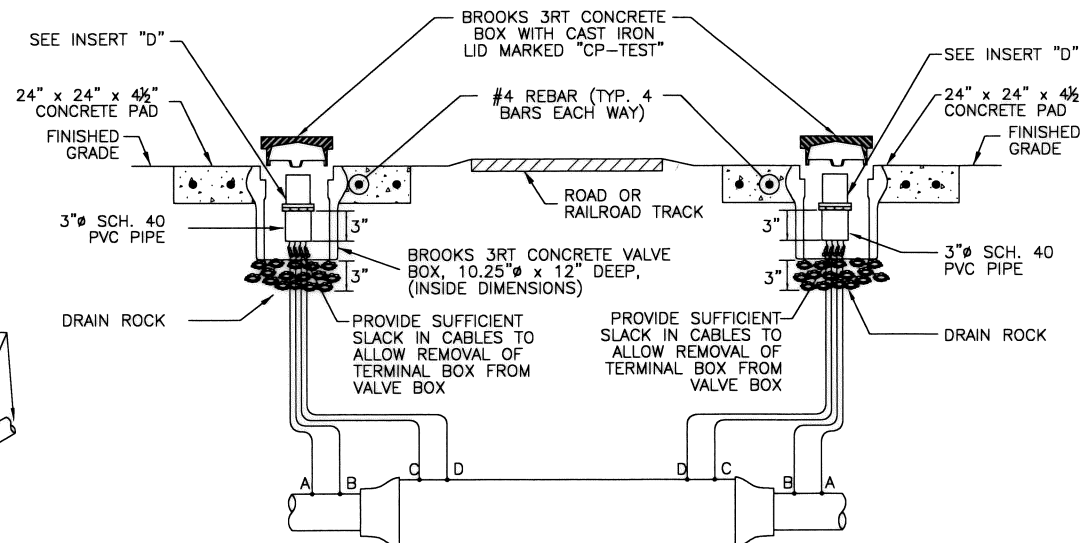
- \* WIRES A & B ARE WHITE
- \* WIRES C, D, E & F ARE RED
- \* WIRES A, C, F ARE #12 AWG TW SOLID COPPER WIRE
- \* WIRES B, D, E ARE #6 AWG TW STRANDED COPPER WIRE
- \* RED WIRES ATTACHED TO FOREIGN OWNED PIPE
- \* WHITE WIRES ATTACHED TO NEW PIPE



INSERT C - NOTES:

1. TERMINAL CONNECTORS SHALL BE RING TONGUE, BRAZED, COPPER, NON-INSULATED WITH 1/4\"/>
  - FOR WIRE SIZE 14-10 AWG, USE THOMAS & BETTS 54101 OR APPROVED EQUAL.
  - FOR WIRE SIZE 6 AWG, USE THOMAS & BETTS 54105 OR APPROVED EQUAL.

INSERT "C"



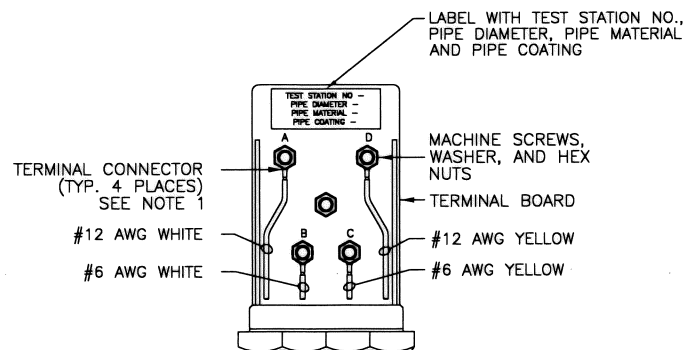
DETAIL 4 - NOTES:

1. FOR PARALLEL CASSED CROSSINGS, INSTALL A COTTBOX TYPE TEST STATION. (UP TO 20 TERMINALS)

**4 FLUSH MOUNTED CASSED CROSSING TEST STATION**

WIRE CODING:

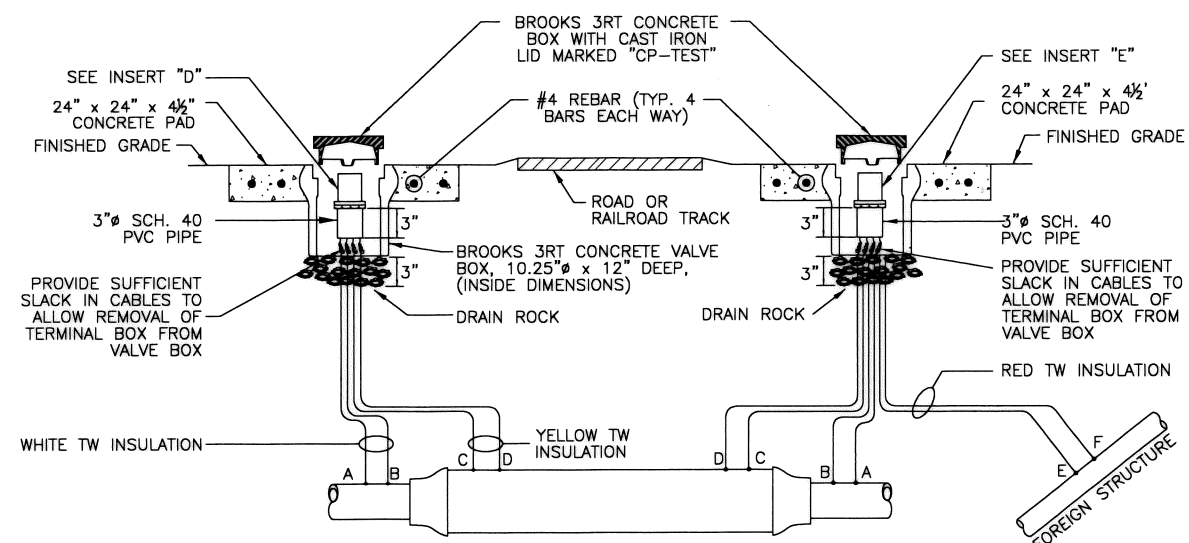
- \* WIRES A & B ARE WHITE, WIRES C & D ARE YELLOW
- \* WIRES A & D ARE #12 AWG TW SOLID SINGLE CONDUCTOR WIRE
- \* WIRES B & C ARE #6 AWG TW STRANDED SINGLE CONDUCTOR
- \* YELLOW WIRES ATTACHED TO CASING
- \* WHITE WIRES ATTACHED TO PROTECTED OR NEW PIPE



INSERT D - NOTES:

1. TERMINAL CONNECTORS SHALL BE RING TONGUE, BRAZED, COPPER, NON-INSULATED WITH 1/4\"/>
  - FOR WIRE SIZE 14-10 AWG, USE THOMAS & BETTS 54101 OR APPROVED EQUAL.
  - FOR WIRE SIZE 6 AWG, USE THOMAS & BETTS 54105 OR APPROVED EQUAL.

INSERT "D"



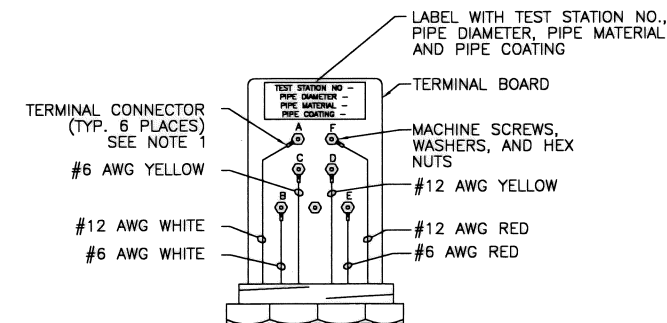
DETAIL 5 - NOTES:

1. TEST STATION SHALL BE MOUNTED DIRECTLY ABOVE THE NEW WATER LINE.
2. FOR MORE THAN ONE (1) FOREIGN LINE, INSTALL A COTTBOX TYPE TEST STATION. (UP TO 20 TERMINALS)

**5 FLUSH MOUNTED CASSED CROSSING AND FOREIGN LINE TEST STATION**

WIRE CODING:

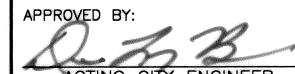
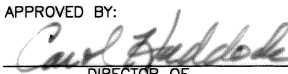
- \* WIRES A & B ARE WHITE, WIRES C & D ARE YELLOW
- \* WIRES E & F ARE RED
- \* WIRES A, D & F ARE #12 AWG TW SOLID SINGLE CONDUCTOR WIRE
- \* WIRES B, C & E ARE #6 AWG TW STRANDED SINGLE CONDUCTOR
- \* WHITE WIRES ATTACHED TO PROTECTED OR NEW PIPE
- \* YELLOW WIRES ATTACHED TO CASING
- \* RED WIRES ATTACHED TO FOREIGN OWNED PIPE



INSERT E - NOTES:

1. TERMINAL CONNECTORS SHALL BE RING TONGUE, BRAZED, COPPER, NON-INSULATED WITH 1/4\"/>
  - FOR WIRE SIZE 14-10 AWG, USE THOMAS & BETTS 54101 OR APPROVED EQUAL.
  - FOR WIRE SIZE 6 AWG, USE THOMAS & BETTS 54105 OR APPROVED EQUAL.

INSERT "E"

<b>CITY OF HOUSTON</b> HOUSTON PUBLIC WORKS	
<b>STANDARD LDWL</b> <b>CATHODIC PROTECTION</b> <b>DETAILS FOR TEST STATIONS</b> (SHEET 2 OF 3) (NOT TO SCALE)	
APPROVED BY:  ACTING CITY ENGINEER	APPROVED BY:  DIRECTOR OF HOUSTON PUBLIC WORKS
EFF DATE: MAR-20-2018	DWG NO: 15641-02