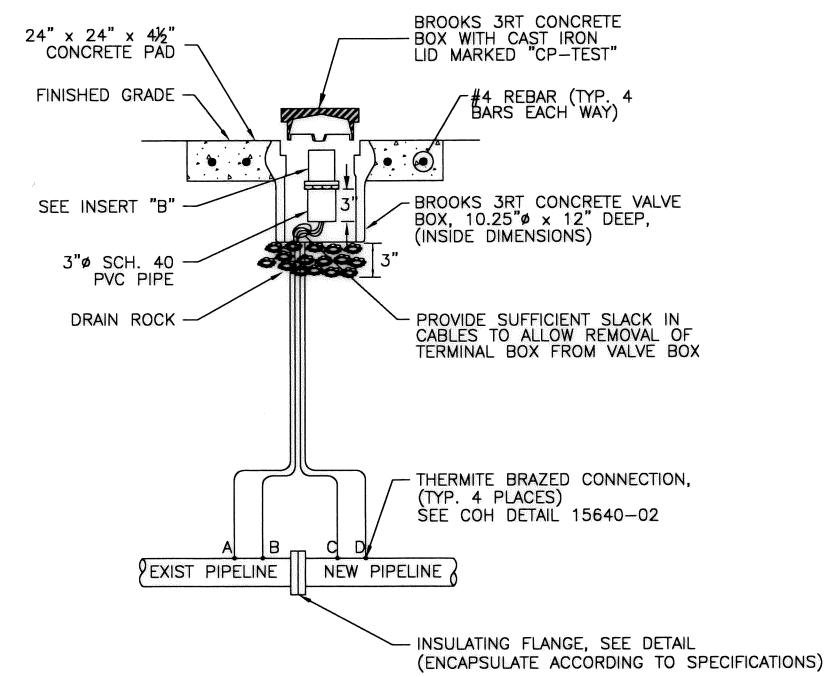


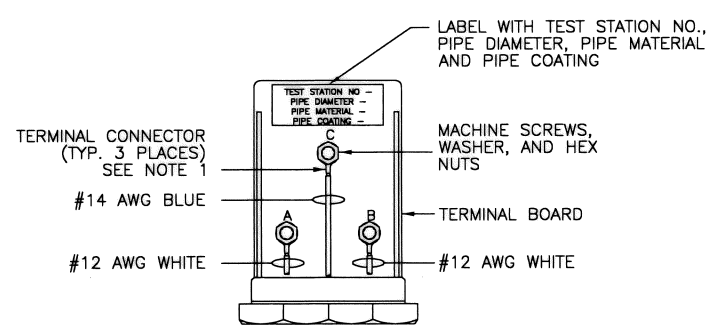
1 FLUSH MOUNTED POTENTIAL TEST STATION

- WIRE CODING:
 * WIRES A & B ARE WHITE, WIRE C IS BLUE
 * WIRES A & B ARE #12 AWG TW SOLID SINGLE CONDUCTOR WIRE
 * WIRES C IS #14 AWG WITH HMWPE INSULATION



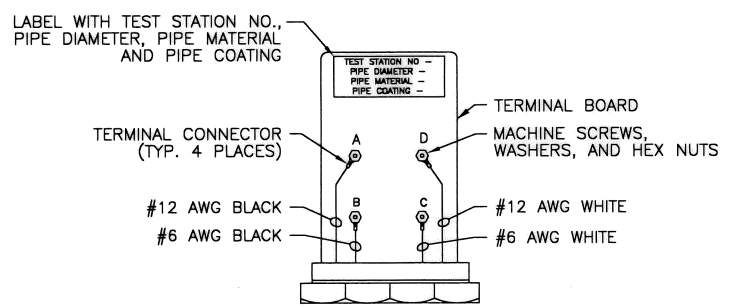
2 FLUSH MOUNTED FLANGE ISOLATION TEST STATION

- WIRE CODING:
 * WIRES A & B ARE BLACK, WIRES C & D ARE WHITE
 * WIRES A & D ARE #12 AWG TW SOLID SINGLE CONDUCTOR WIRE
 * WIRES B & C ARE #6 AWG TW STRANDED SINGLE CONDUCTOR
 * BLACK WIRES ATTACHED TO UNPROTECTED OR EXISTING PIPE
 * WHITE WIRES ATTACHED TO PROTECTED OR NEW PIPE



- INSERT A - NOTES:
 1. TERMINAL CONNECTORS SHALL BE RING TONGUE, BRAZED, COPPER, NON-INSULATED WITH $\frac{1}{4}$ " STUD SIZE
 - FOR WIRE SIZE 14-10 AWG, USE THOMAS & BETTS 54101 OR APPROVED EQUAL.

INSERT "A"



- INSERT B - NOTES:
 1. TERMINAL CONNECTORS SHALL BE RING TONGUE, BRAZED, COPPER, NON-INSULATED WITH $\frac{1}{4}$ " STUD SIZE
 - FOR WIRE SIZE 14-10 AWG, USE THOMAS & BETTS 54101 OR APPROVED EQUAL.
 - FOR WIRE SIZE 6 AWG, USE THOMAS & BETTS 54105 OR APPROVED EQUAL.

INSERT "B"

CITY OF HOUSTON HOUSTON PUBLIC WORKS	
STANDARD LDWL CATHODIC PROTECTION DETAILS FOR TEST STATIONS (SHEET 1 OF 3) (NOT TO SCALE)	
APPROVED BY: ACTING CITY ENGINEER	APPROVED BY: DIRECTOR OF HOUSTON PUBLIC WORKS
EFF DATE: MAR-20-2018	DWG NO: 15641-01