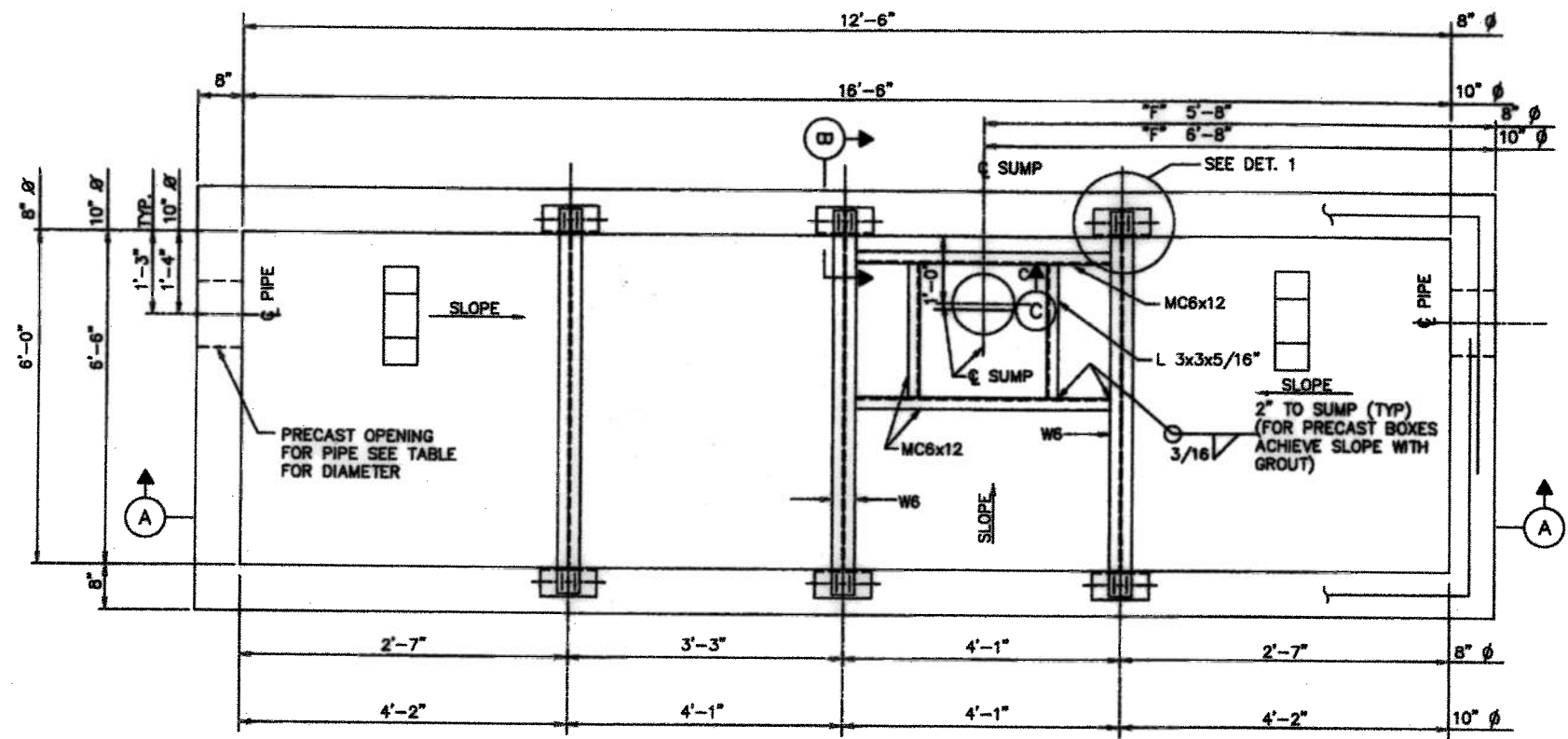


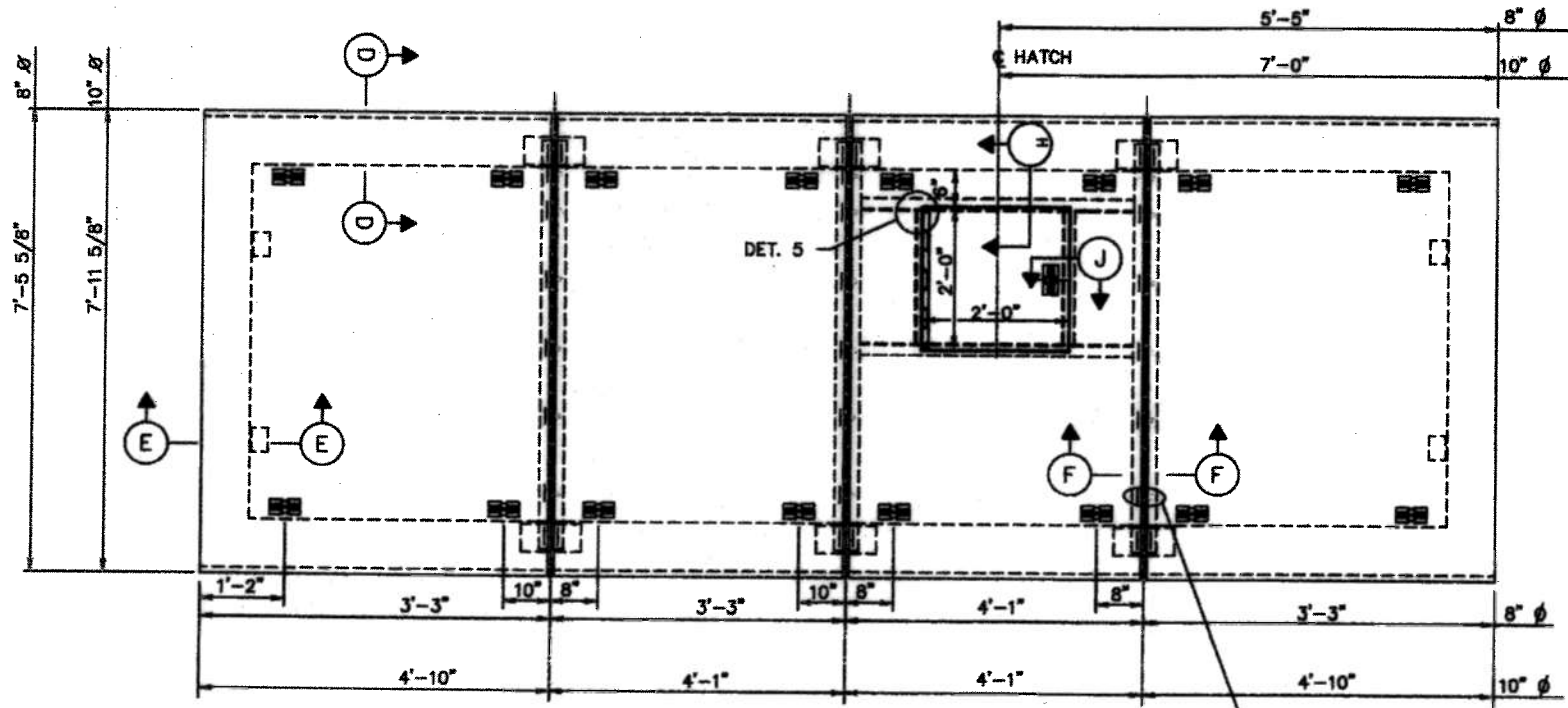
**NOTES:**

- SEE SHEETS "STRUCTURAL DETAILS TURBINE/COMPOUND METER STANDARD SERVICE 1 OF 2 AND 2 OF 2" FOR ALL STRUCTURAL DETAILS AND DIMENSIONS NOT SHOWN HERE. THIS SHEET REFLECTS THE PLAN DIMENSIONS THAT DIFFER FOR THE FIRE SERVICE BOXES. (FOR THE 8" Ø LINE THIS IS A CHANGE IN WIDTH AND TOP PLATE ARRANGEMENT AND FOR THE 10" Ø LINE THERE IS A CHANGE IN LENGTH, WIDTH AND TOP PLATE ARRANGEMENT.)
- FOR THE 4" Ø AND 6" Ø FIRE SERVICE BOXES USE SAME DIMENSIONS AS THEIR RESPECTIVE STANDARD SERVICE METER BOXES.





**PLAN**  
N.T.S.

NOTE:  
IF ALTERNATE PIPING ARRANGEMENT IS USED, PLAN WILL BE MIRRORED BY MOVING THE CENTER LINE OF PIPE AND ACCESS DOOR TOWARD THE BOTTOM OF THIS PLAN. (SEE PIPING ARRANGEMENT SHEETS)



**PLAN - COVER PLATE**  
N.T.S.

DRILL COVER & BEAM FOR 3/8" Ø STAINLESS STL SCREWS (COUNTER SUNK)

<b>CITY OF HOUSTON</b>	
DEPARTMENT OF PUBLIC WORKS AND ENGINEERING	
STRUCTURAL PLANS FIRE SERVICE METER (NOT FOR TRAFFIC LOADING) (NOT TO SCALE)	
APPROVED:  CITY ENGINEER	APPROVED:  DIRECTOR OF PUBLIC WORKS AND ENGINEERING
EFF DATE: JUL-01-2010	DWG NO: 02526-13