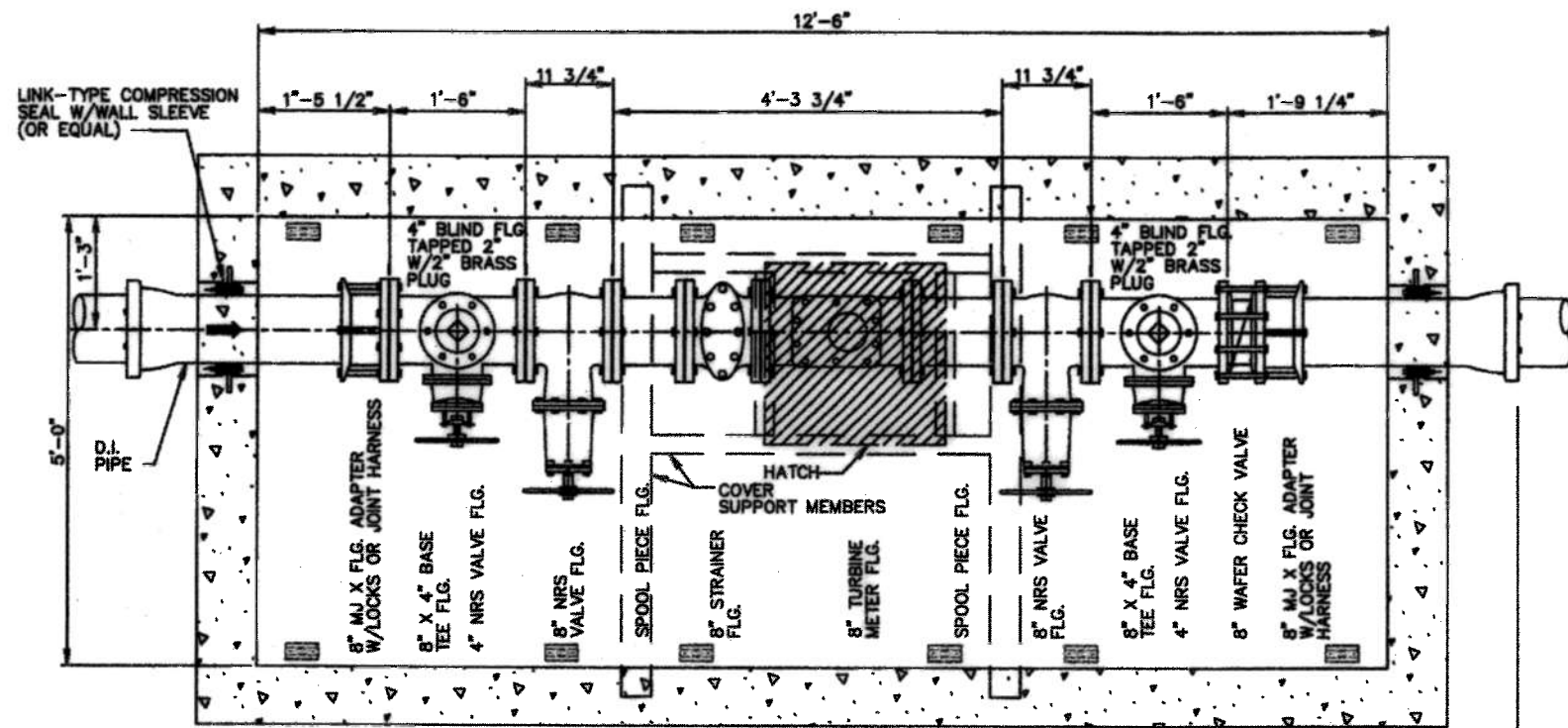


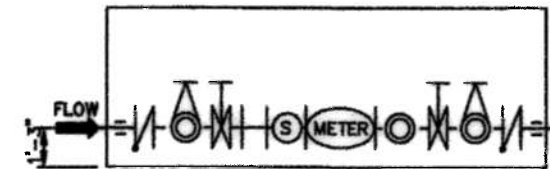
NOTES:

1. SEE CITY OF HOUSTON STANDARD SPECIFICATION, "WATER METERS".
2. METER INSTALLATION SHALL BE IN ACCORDANCE WITH "DESIGN DIVISION SPECIFICATIONS FOR WATER MAIN CONSTRUCTION AND MATERIALS".
3. DIMENSIONS INCLUDE GASKET THICKNESS REQUIRED BETWEEN EACH FLANGE.
4. SEE STRUCTURAL SHEETS.
5. OMIT SPOOL PIECE IF IT IS LESS THAN 6" IN LENGTH.

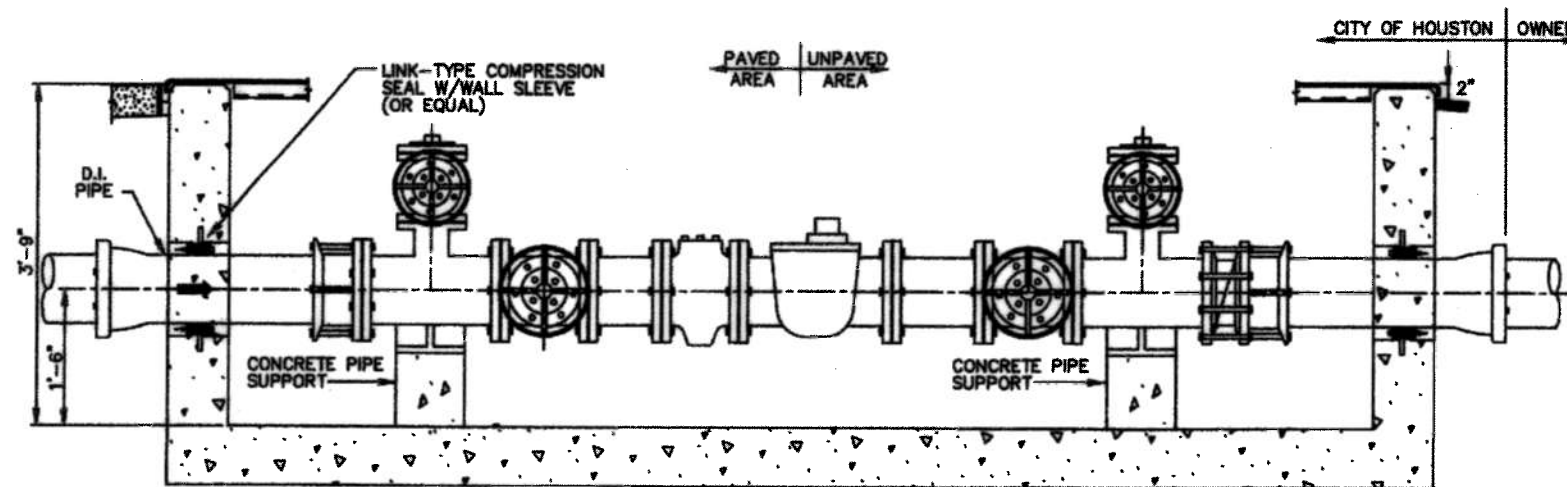


**8" TURBINE METER
PLAN VIEW**

CITY OF HOUSTON OWNER





**ALTERNATE
PLAN VIEW**
(SEE NOTE 3 ON COVER PLATE PLAN)



**8" TURBINE METER
ELEVATION VIEW**

CITY OF HOUSTON OWNER

CITY OF HOUSTON	
DEPARTMENT OF PUBLIC WORKS AND ENGINEERING	
TYPICAL PIPING ARRANGEMENT 8" TURBINE METER STANDARD SERVICE (NOT TO SCALE)	
APPROVED BY:  CITY ENGINEER	APPROVED BY:  DIRECTOR OF PUBLIC WORKS AND ENGINEERING
EFF DATE: JUL-01-2010	DWG NO: 02526-05