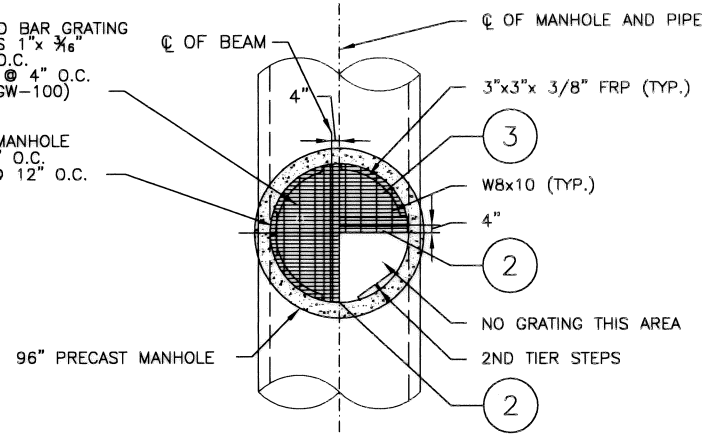
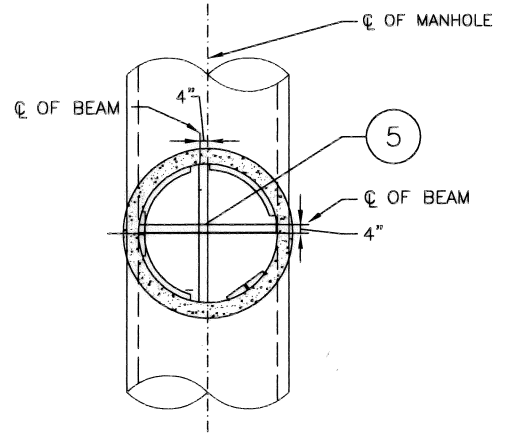


1" GALVANIZED BAR GRATING
BEARING BARS 1" x 3/8"
@ 1-3/16" O.C.
CROSS BARS @ 4" O.C.
(Mc Nichols GW-100)

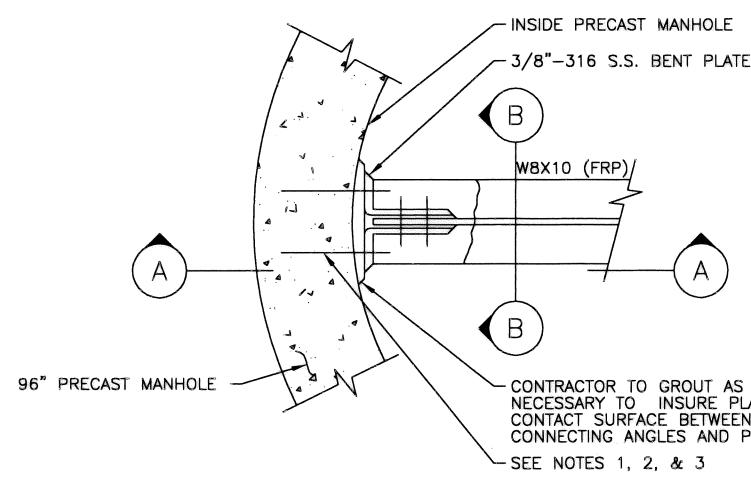
1ST TIER
FIBERGLASS MANHOLE
STEPS @ 12" O.C.
STAGGERED @ 12" O.C.



PLAN VIEW OF LANDING
(W/GRATING SHOWN)



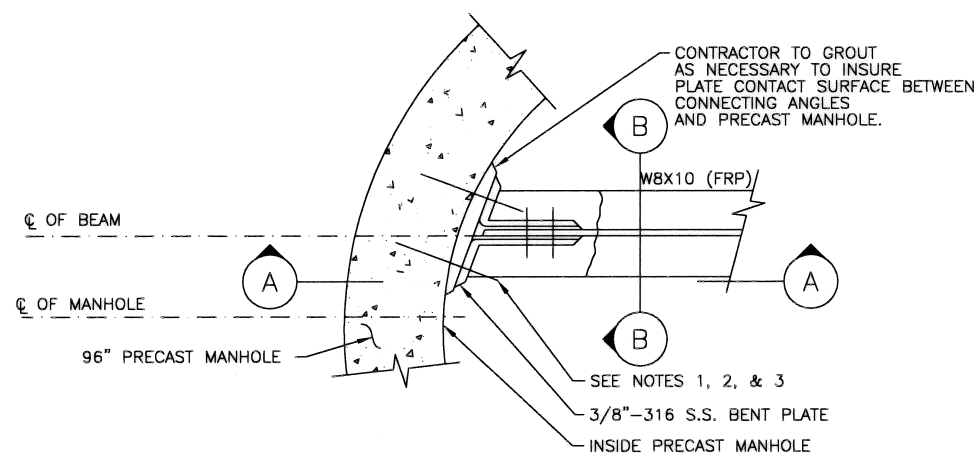
PLAN VIEW OF LANDING
(W/O GRATING SHOWN)



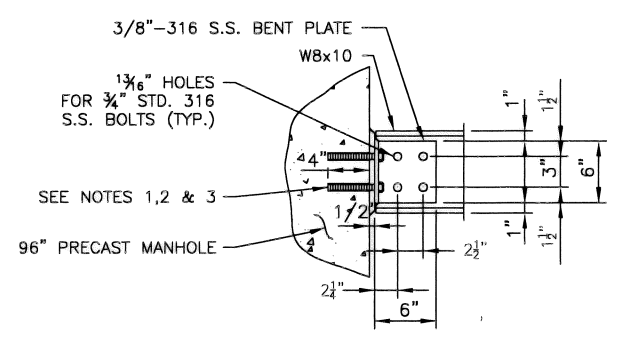
2 BEAM CONNECTION DETAIL
NO SCALE

NOTES:

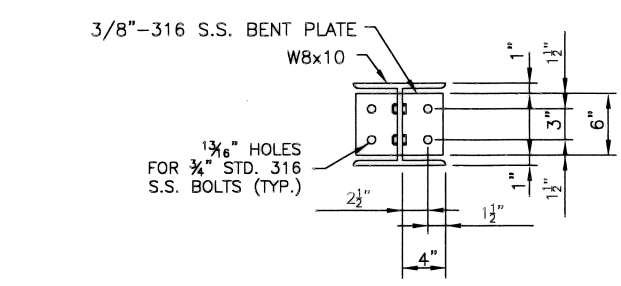
- CONTRACTOR TO DRILL 1/4" DIAMETER HOLES 4" DEEP, INTO PRECAST MANHOLE FOR 3/4" DIAMETER ANCHOR BOLTS.
- GROUT IN 3/4" DIAMETER ANCHOR BOLTS WITH GRUTEM 435 AS MANUFACTURED BY I.W. INDUSTRIES, OR APPROVED EQUAL, MANUFACTURERS INSTRUCTIONS IN THE USE OF ALL MATERIALS SPECIFIED SHALL BE FOLLOWED IN STRICT ACCORDANCE.
- ANCHOR BOLTS SHALL BE 3/4" DIAMETER x 6" LONG 316 S.S. ALL THREAD BOLTS WITH 2" PROJECTION.
- ALL STEEL TO BE GRADE 40.
- ALL CONCRETE TO BE CLASS "A".
- COORDINATE THE LOCATION AND TYPE JOINTS BETWEEN OFFSET BOX AND PRECAST SECTIONS.
- PROVIDE RAMNEK OR APPROVED EQUAL BETWEEN PRECAST SEGMENTS OF THE MANHOLE.



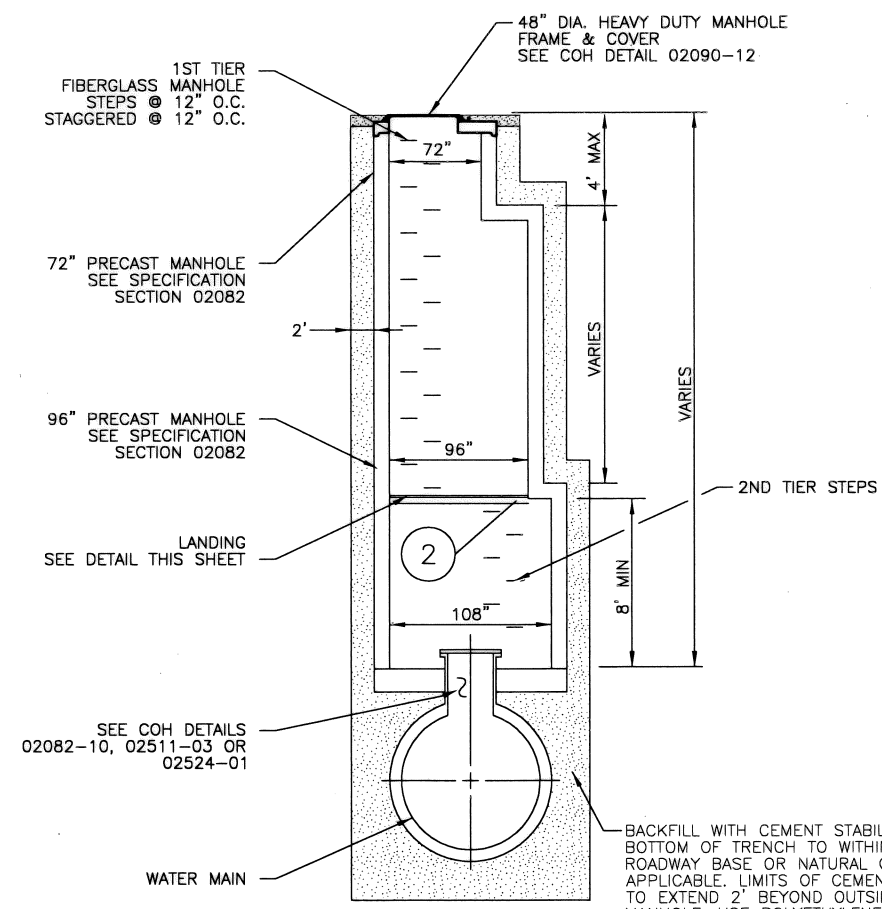
3 BEAM CONNECTION DETAIL
NO SCALE



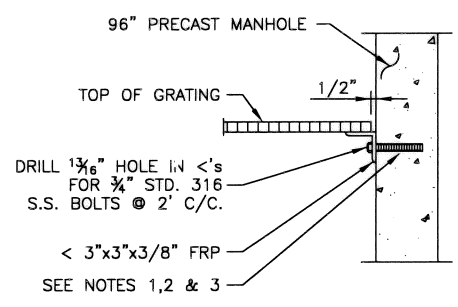
A SECTION
NO SCALE



B SECTION B
NO SCALE



PROFILE



4 ANGLE CONNECTION DETAIL
NO SCALE

1 EXTRA DEPTH - ACCESS MANHOLE
(SEE PLANS FOR LOCATION)
NO SCALE

CITY OF HOUSTON HOUSTON PUBLIC WORKS	
STANDARD LDWL SAF-T-CLIMB DETAILS FOR EXTRA DEPTH MANHOLE (NOT TO SCALE)	
APPROVED BY: ACTING CITY ENGINEER	APPROVED BY: DIRECTOR OF HOUSTON PUBLIC WORKS
EFF DATE: MAR-20-2018	DWG NO: 02082-11