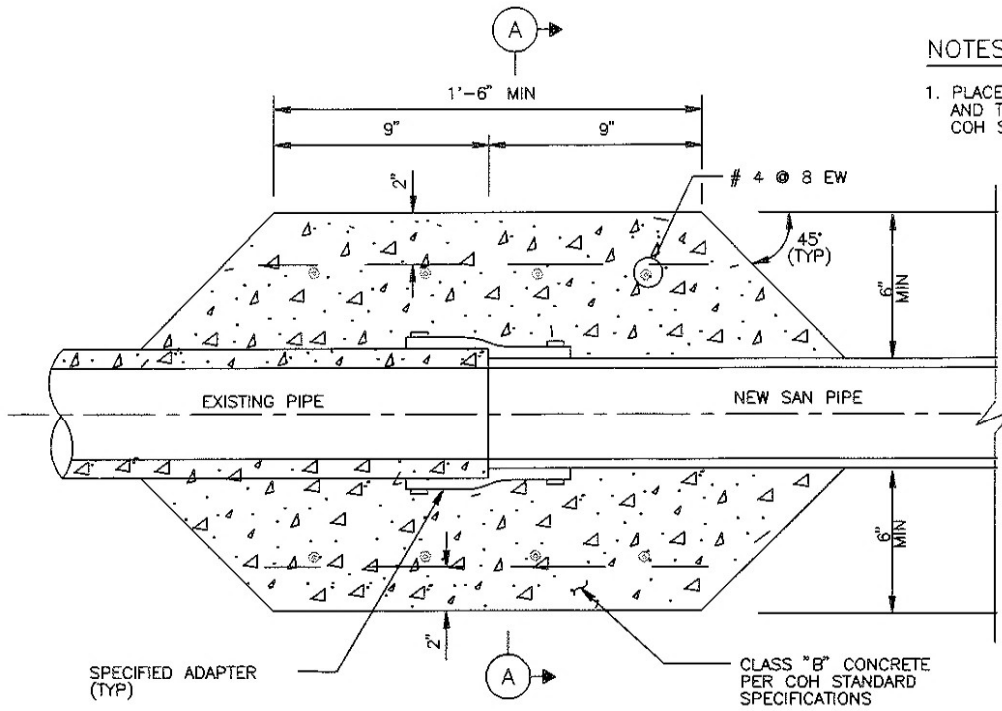
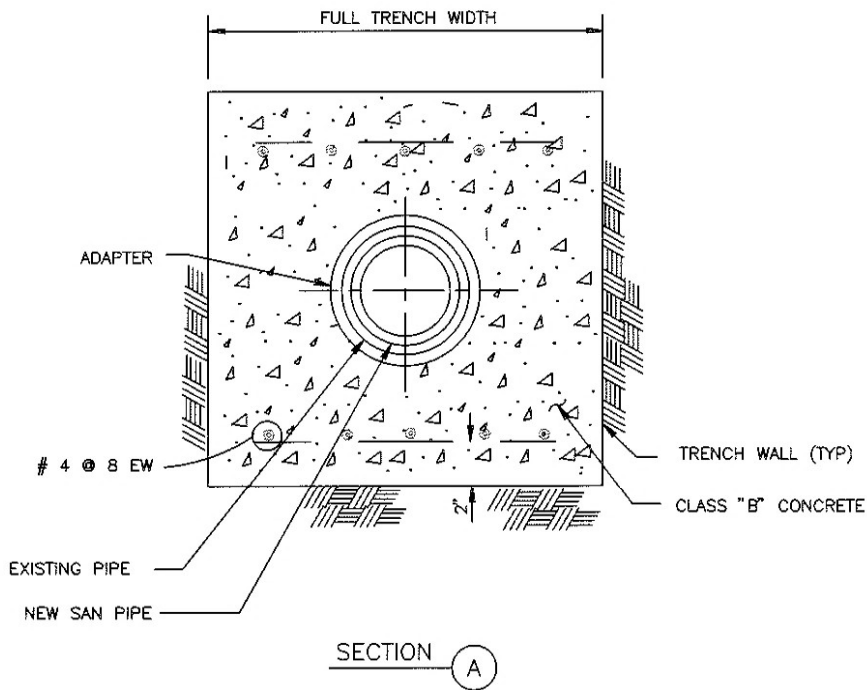


**NOTES:**

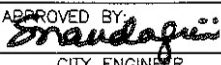
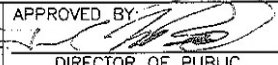
1. PLACE AND COMPACT EMBEDMENT AND TRENCH ZONE BACKFILL PER COH STANDARD SPECIFICATIONS.



**LONGITUDINAL SECTION**



**SECTION A**

<b>CITY OF HOUSTON</b> DEPARTMENT OF PUBLIC WORKS AND ENGINEERING ENGINEERING, CONSTRUCTION AND REAL ESTATE DIVISION	
<b>SANITARY SEWER          PIPE TRANSITION FOR 36"          SEWER AND SMALLER</b> (NOT TO SCALE)	
APPROVED BY:  CITY ENGINEER	APPROVED BY:  DIRECTOR OF PUBLIC WORKS AND ENGINEERING
EFF DATE: OCT-01-2002	DWG NO: 02531-04