

NOTES:

1.) MATERIAL SHALL MEET OR EXCEED MINIMUM REQUIREMENTS OF ASTM A36 CARBON STEEL.

2.) TOP AND BOTTOM RINGS SHALL HAVE A CONTINUOUS WELD.

3.) ALL "M5" STYLE RISERS ARE FOR HEIGHT ADJUSTMENTS EQUAL TO OR LESS THAN THE THICKNESS OF THE MANHOLE COVER.

4.) EACH RISER IS CUSTOM FABRICATED FROM MEASUREMENTS PROVIDED WITH EACH ORDER. REQUIRED MEASUREMENTS INCLUDE THE FOLLOWING:

- A. EXIST. MANHOLE COVER DIAMETER - TOP & BOTTOM
- B. EXISTING MANHOLE COVER THICKNESS
- C. REQUIRED HEIGHT OF ADJUSTMENT

5.) MINIMUM RECOMMENDED HEIGHT OF ADJUSTMENT FOR REPAVING PROJECTS IS 1".

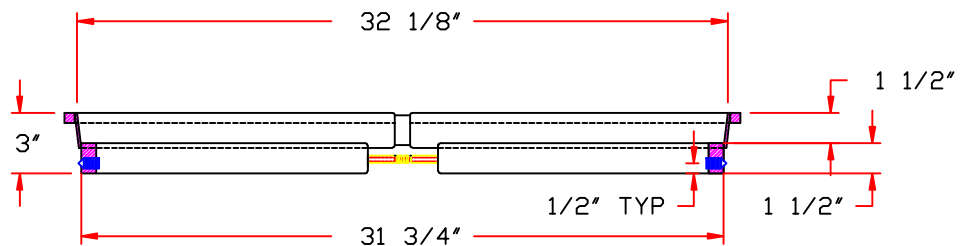
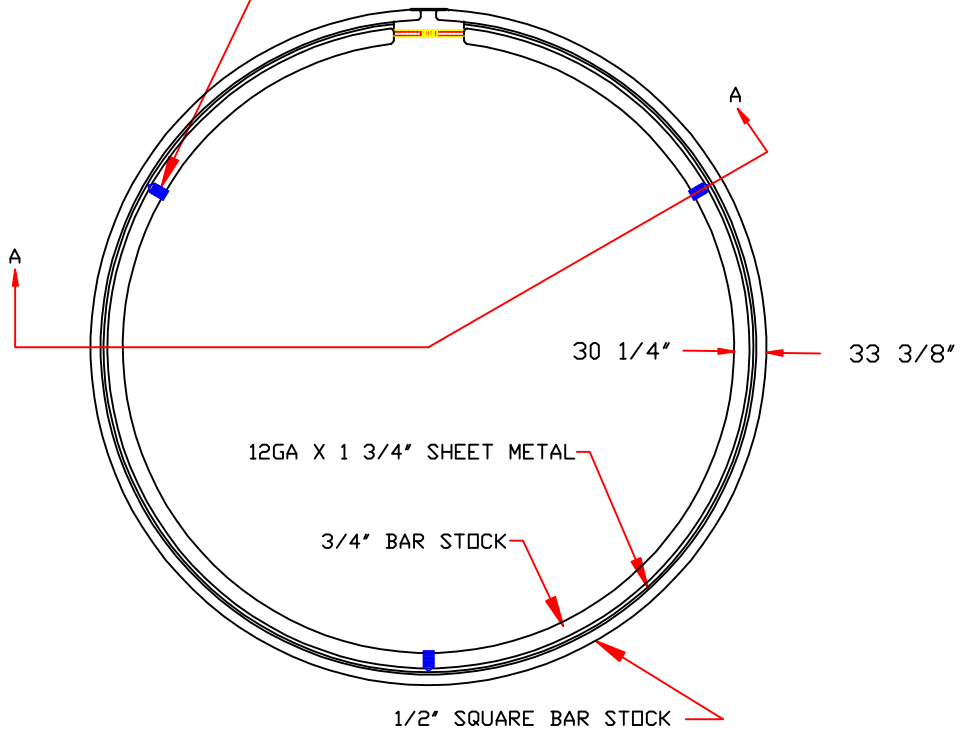
6.) HEIGHT ADJUSTMENTS ARE AVAILABLE IN 1/4" INCREMENTS.

7.) DURING INSTALLATION CHECK FOR FULL BEARING OF LOWER FRAME SECTION ON EXISTING CASTING.

8.) DIMENSIONS MAY VARY TO MEET EXISTING FIELD CONDITIONS. ANY CHANGE IN DIMENSIONS SHALL BE APPROVED BY THE OWNER.

9.) AFTER FABRICATION, RISERS ARE COATED WITH EITHER A WATER BASED BITUMINOUS ASPHALT EMULSION PAINT OR BASF E-COAT W/ CHARCOAL BLACK TOPCOAT.

1/2" CONE POINTED, ALLEN HEAD SET SCREWS (3 REQ'D)



CITY OF HOUSTON DEPARTMENT OF PUBLIC WORKS AND ENGINEERING ENGINEERING, CONSTRUCTION AND REAL ESTATE GROUP	
STEEL ADJUSTING RISER	
<small>(NOT TO SCALE)</small>	
APPROVED BY:	APPROVED BY:
CITY ENGINEER	DIRECTOR OF PUBLIC WORKS AND ENGINEERING
EFF. DATE: XX-XX-XX	DWG. NO: 02084-02B