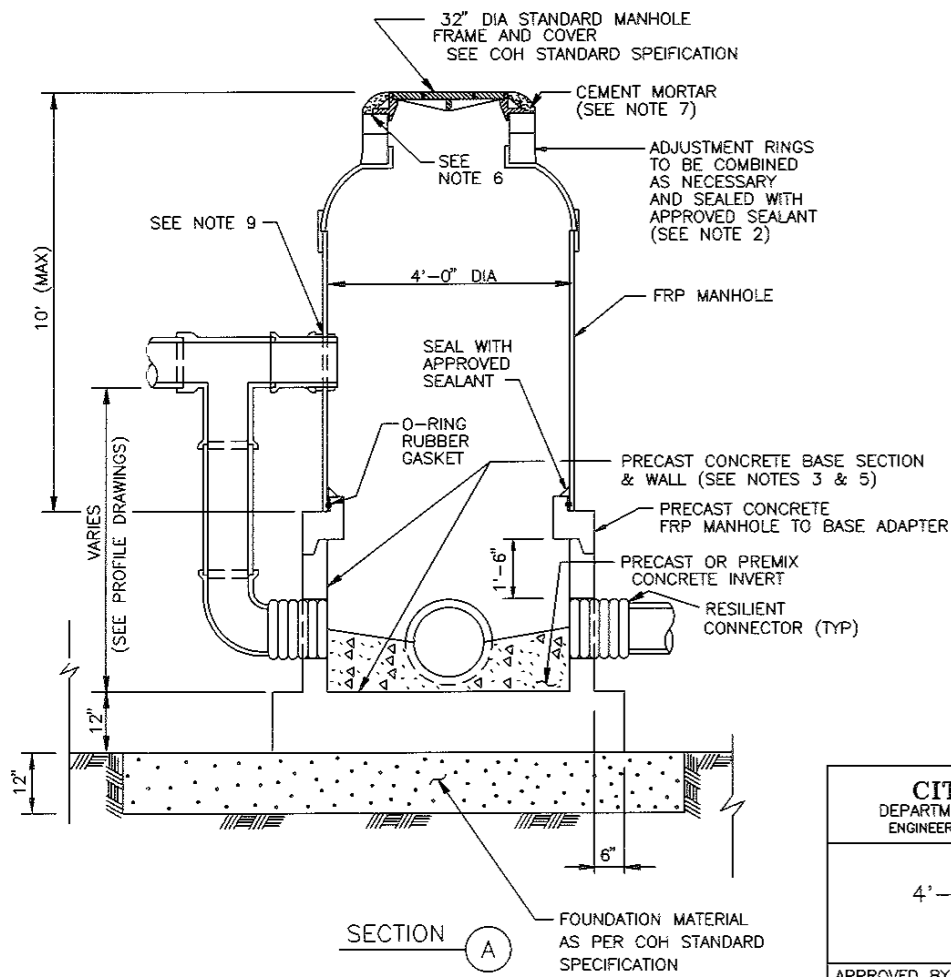
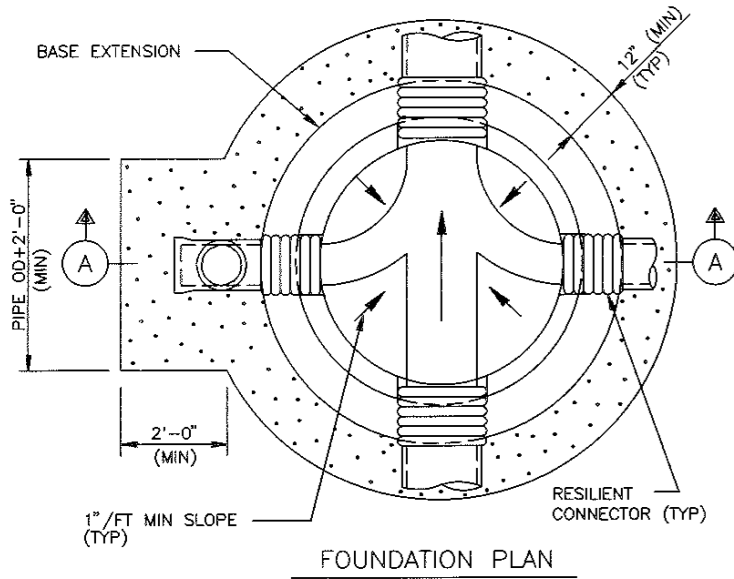
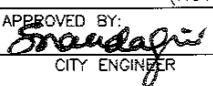
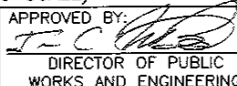


NOTES:

1. ECCENTRIC FIBERGLASS REINFORCED PLASTIC (FRP) MANHOLE MAY BE USED.
2. PRECAST CONCRETE OR HDPE RINGS SHALL BE PROVIDED FOR A COMBINED ADJUSTMENT HEIGHT OF AT LEAST 12". THE TOTAL HEIGHT OF THE ADJUSTMENT RINGS SHALL NOT EXCEED 1'-6".
3. MANHOLE BASE WALL THICKNESS FOR DEPTH EXCEEDING 12'-0" SHALL BE DESIGNED FOR ACTUAL LOADING CONDITIONS. MIN THICKNESS SHALL BE 5 INCHES.
4. MANHOLE DROP AND INTERSECTING PIPES SHALL BE INSTALLED ONLY WHEN CALLED FOR IN PLAN AND PROFILE DRAWING.
5. PROVIDE CORROSION RESISTANT COATING ON ALL CONCRETE SURFACES ABOVE THE INVERT PER COH STANDARD SPECIFICATION.
6. SEAT MANHOLE FRAME IN SEALANT PER COH STANDARD SPECIFICATION.
7. OMIT CEMENT MORTAR WHEN MANHOLE IS LOCATED IN PAVED AREAS.
8. MIN REINFORCING IN THE PRECAST CONCRETE BASE SHALL BE # 5 @ 8 EW.
9. MANUFACTURED WATER TIGHT CONNECTOR, INSERT-A-TEE OR EQUAL, CORE DRILL HOLE AND INSTALL PER MANUFACTURERS RECOMMENDATIONS.
10. PROVIDE BACKFILL TO MATCH ADJACENT PIPE TRENCH BACKFILL PER COH STANDARD SPECIFICATION.



CITY OF HOUSTON DEPARTMENT OF PUBLIC WORKS AND ENGINEERING ENGINEERING, CONSTRUCTION AND REAL ESTATE DIVISION	
SANITARY SEWER 4'-0" DIAMETER FIBERGLASS MANHOLE (NOT TO SCALE)	
APPROVED BY:  CITY ENGINEER	APPROVED BY:  DIRECTOR OF PUBLIC WORKS AND ENGINEERING
EFF DATE: OCT-01-2002	DWG NO: 02083-01