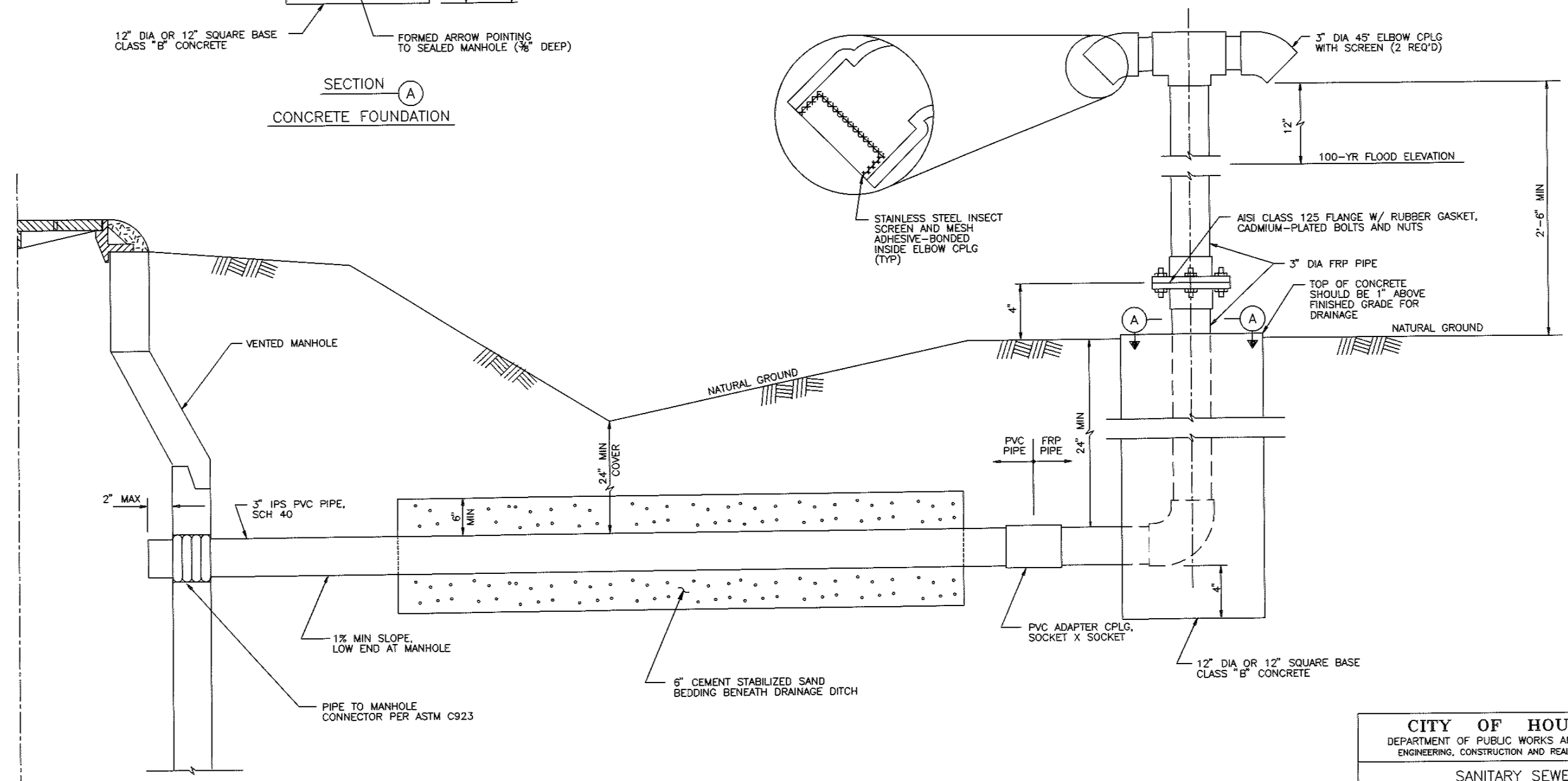


- NOTES:**
1. INSTALL AT LOCATION AND BASED ON 100-YEAR FLOOD ELEVATION SHOWN ON PLAN AND PROFILE DWGS.
 2. DRAIN TO VENTED (ADJACENT) MH AT MIN 1% SLOPE. CONNECT TO MANHOLE WITH SPECIFIED CONNECTOR.
 3. WHEN VENT CROSSES DRAINAGE DITCH, PROVIDE CEMENT STABILIZED SAND BEDDING.
 4. THE VENT IS TO BE INSTALLED WITHIN THE RIGHT OF WAY.
 5. SEE COH STANDARD SPECIFICATION FOR PROTECTIVE COATING REQUIREMENTS FOR EXPOSED FRP PIPE.



CITY OF HOUSTON DEPARTMENT OF PUBLIC WORKS AND ENGINEERING ENGINEERING, CONSTRUCTION AND REAL ESTATE DIVISION	
SANITARY SEWER MANHOLE VENT FOR SEALED MANHOLE (NOT TO SCALE)	
APPROVED BY: CITY ENGINEER	APPROVED BY: DIRECTOR OF PUBLIC WORKS AND ENGINEERING
EFF DATE: OCT-01-2002	DWG NO: 02082-06