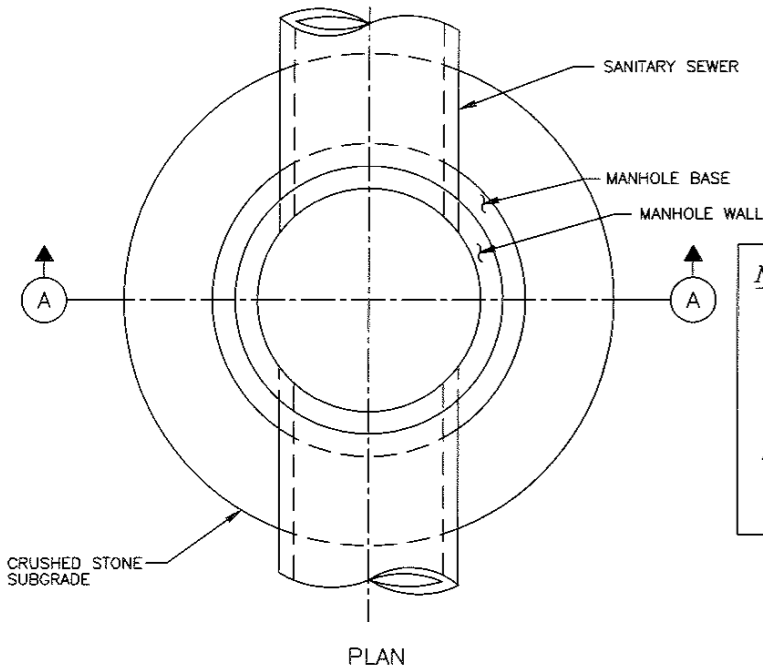


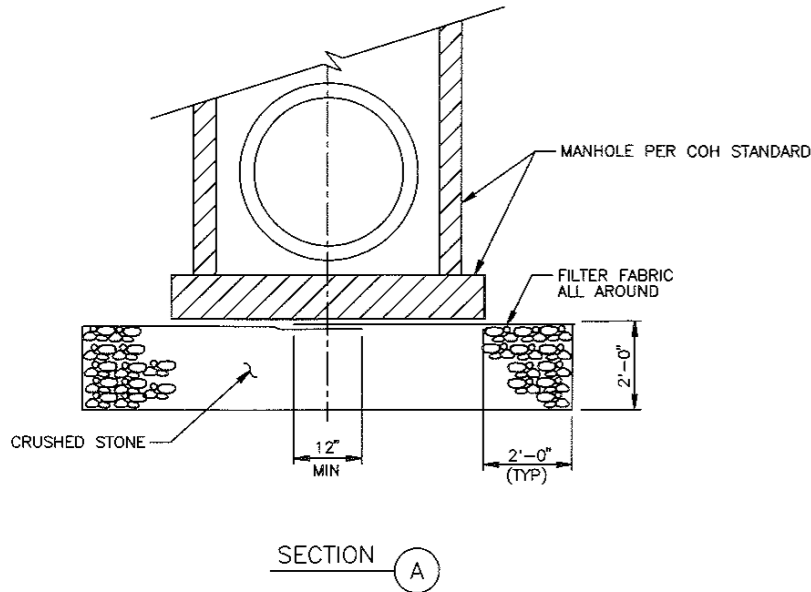
NOTES:

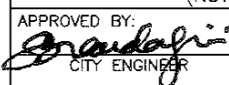
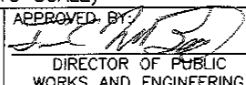
1. CRUSHED STONE SUPPORT UNDER A MANHOLE BASE SHALL BE INSTALLED AT LOCATIONS WHERE REQUIRED SUBGRADE COMPACTION OR DEWATERING CANNOT BE ACHIEVED.
2. WHERE HEAVING SUBGRADE CONDITIONS OCCUR, AS DETERMINED BY THE CITY ENGINEER, A PILE SUPPORTED MANHOLE SHALL BE PROVIDED.



NOTE TO SPECIFIER:

1. INCLUDE THIS DETAIL ONLY IF THE GEOTECHNICAL REPORT INDICATES THAT AN UNSTABLE FOUNDATION (ONE WHICH WILL NOT ALLOW COMPACTION OR DEWATERING AS SPECIFIED) IS POSSIBLE. IF THIS CONDITION IS REPORTED BY THE GEOTECHNICAL ENGINEER, NOTIFY THE CITY'S PROJECT MANAGER.
2. ALWAYS INCLUDE COMPANION STANDARD DETAIL FOR PILE SUPPORTED MANHOLE FOR UNSTABLE SUBGRADE WITH THIS DETAIL, IF GEOTECHNICAL REPORT INDICATES HEAVING SUBGRADE IS LIKELY.



CITY OF HOUSTON DEPARTMENT OF PUBLIC WORKS AND ENGINEERING ENGINEERING, CONSTRUCTION AND REAL ESTATE DIVISION	
SANITARY SEWER CRUSHED STONE SUPPORTED MANHOLE FOR WET STABLE TRENCH (NOT TO SCALE)	
APPROVED BY:  CITY ENGINEER	APPROVED BY:  DIRECTOR OF PUBLIC WORKS AND ENGINEERING
EFF DATE: OCT-01-2002 DWG NO: 02082-05	

COH