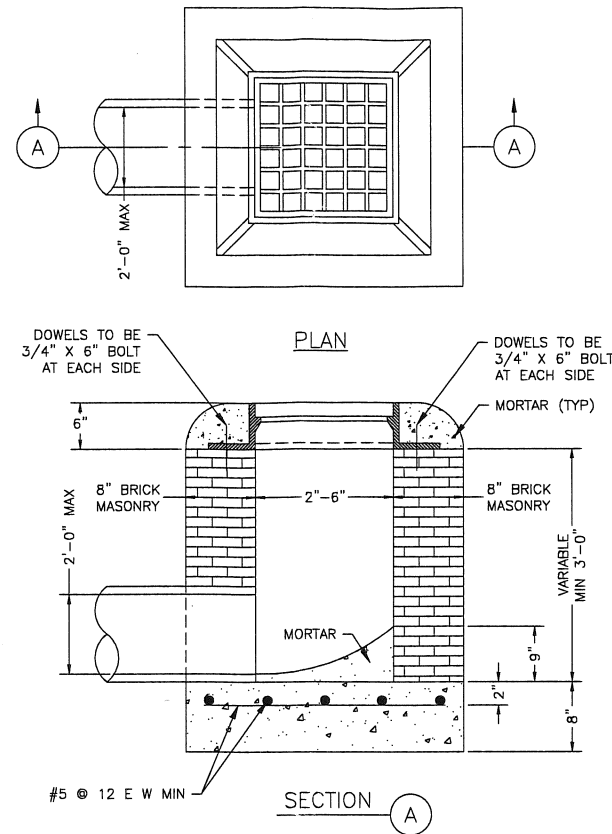


02632-01

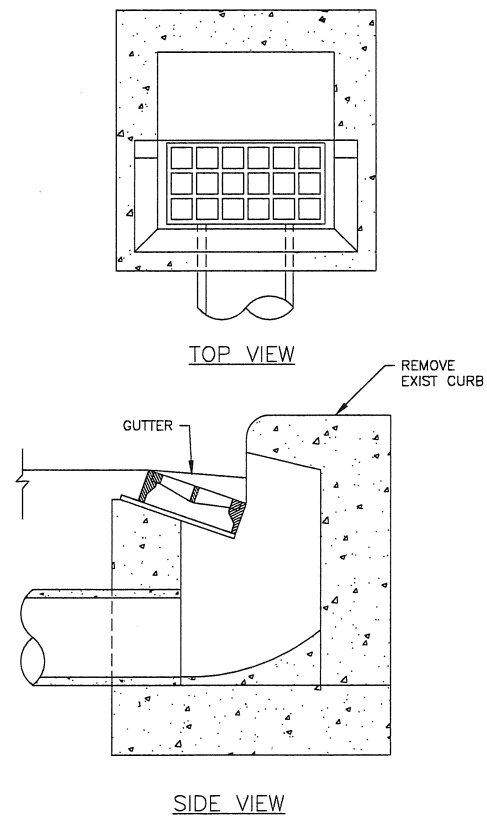


COH IS PHASING OUT BRICK. NEW DETAILS TO BE POSTED END OF 2019

STORM SEWER TYPE "A" GRATE INLET
NTS

02632-03

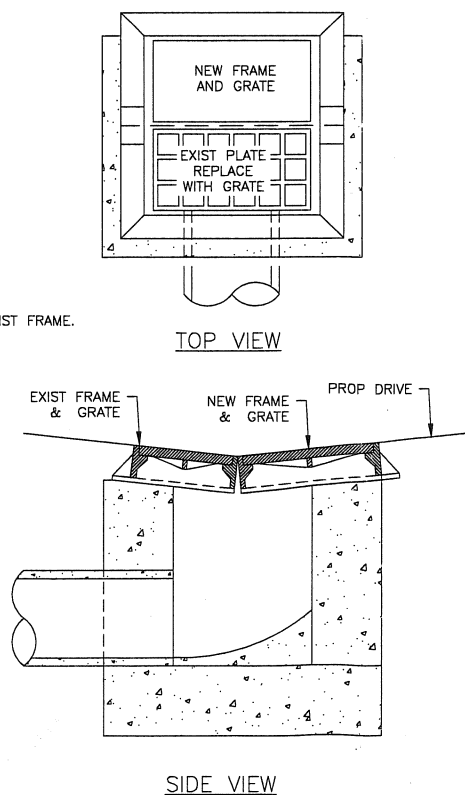
STEP 1: EXIST TYPE "B" INLET



STEP 2:

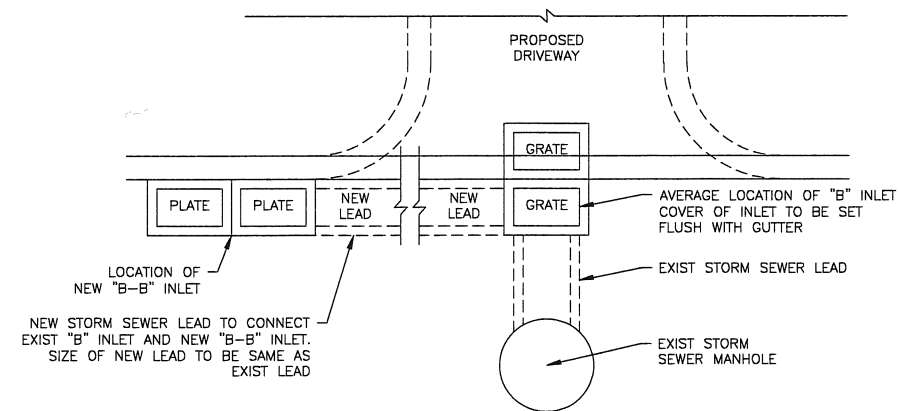
NOTES:

1. AFTER REMOVING EXIST CURB, RAISE EXIST FRAME TO GUTTER GRADE.
2. REPLACE EXIST PLATE WITH A GRATE.
3. ADD NEW FRAME AND GRATE NEXT TO EXIST FRAME.
4. BACKFILL INLET TO A POINT ONE FOOT BEHIND THE CURB WITH 1 SACK/TON CEMENT STABILIZED SAND.



STORM SEWER TYPE "B" INLET RELOCATION
NTS

STEP 3: CONSTRUCT NEW TYPE "B-B" INLET ON CURB RETURN OF PROPOSED DRIVEWAY



FIRM INFORMATION
CITY OF HOUSTON
HOUSTON PUBLIC WORKS

ENGINEER'S SEAL
STORM SEWER
02632-01 AND 03

APPROVED BY: *[Signature]* CITY ENGINEER
APPROVED BY: *[Signature]* DEPUTY DIRECTOR

APPROVED BY: *[Signature]* DIRECTOR OF PUBLIC WORKS AND ENGINEERING

EFFECTIVE DATE: JUL-01-2019
FOR CITY OF HOUSTON USE ONLY

SHEET NO. XX OF XX