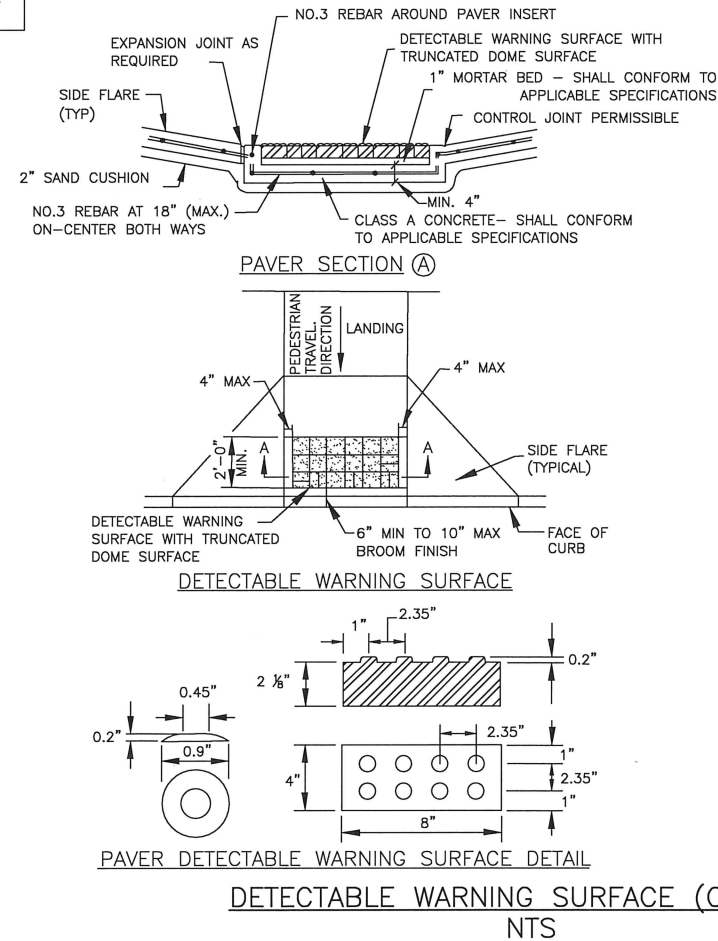


GENERAL NOTES FOR DETECTABLE WARNINGS

1. DETECTABLE WARNING SURFACES MUST BE FULLY ADA COMPLAINT.
2. ALL NEW CURB RAMPS MUST CONTAIN A DETECTABLE WARNING SURFACE THAT CONSISTS OF RAISED TRUNCATED DOMES. THE SURFACE MUST CONTRAST VISUALLY WITH ADJOINING SURFACE, INCLUDING SIDE FLARES. FURNISH DARK BROWN OR DARK RED DETECTABLE WARNING SURFACE ADJACENT TO UNCOLORED CONCRETE, UNLESS SPECIFIED ELSEWHERE IN THE PLANS.
3. DETECTABLE WARNING SURFACES MUST MAINTAIN A SLIP RESISTANCE WITH FA-VALUE OF EQUAL TO OR GREATER THAN 0.8.
4. DETECTABLE WARNING SURFACES MUST MAINTAIN A WATER ABSORPTION RATE OF LESS THAN 1%. DETECTABLE WARNING SHALL NOT ALLOW WATER TO ACCUMULATE.
5. DETECTABLE WARNINGS INSTALLED INTO FRESH CONCRETE SHALL BE WITHOUT VOIDS AND UTILIZING AN ACCEPTABLE ANCHORING SYSTEM.
6. ALIGN TRUNCATED DOMES IN THE DIRECTION OF PEDESTRIAN TRAVEL WHEN ENTERING THE STREET.
7. DETECTABLE WARNING SURFACES SHALL BE A MINIMUM OF 24" IN DEPTH IN THE DIRECTION OF PEDESTRIAN TRAVEL, AND EXTEND THE FULL WIDTH OF THE CURB RAMP OR LANDING WHERE THE PEDESTRIAN ACCESS ROUTE ENTERS THE STREET.
8. DETECTABLE WARNING SURFACES SHALL BE LOCATED SO THAT THE EDGE NEAREST THE CURB LINE IS 6" MIN TO 10" MAX FROM THE DETECTABLE WARNING SURFACES MAY BE CURVED ALONG THE CORNER RADIUS.
9. REFERENCE CURB RAMP DETAILS FOR RAMP GROOVED SURFACE.
10. ALL RAMPS AND SIDEWALKS/WALKWAYS SHALL BE CONSTRUCTED IN ACCORDANCE WITH AGENCY STANDARD DETAILS, TEXAS ACCESSIBILITY STANDARDS (TAS) AND AMERICANS WITH DISABILITIES ACT (ADA) REQUIREMENTS. IF THERE IS A CONFLICT IN THE REQUIREMENTS, THE STRICTEST REQUIREMENTS SHALL GOVERN.
11. CURB RAMPS THAT ARE STEEPER THAN A 1:15 MAX SLOPE WILL NOT BE ACCEPTED BY THE CITY OF HOUSTON.

DETECTABLE WARNING CURB RAMP DETAILS
NTS



NOTES

GENERAL NOTES

1. ALL RAMPS AND SIDEWALKS/WALKWAYS SHALL BE CONSTRUCTED IN ACCORDANCE WITH AGENCY STANDARD DETAILS, TEXAS ACCESSIBILITY STANDARDS (TAS) AND AMERICANS WITH DISABILITIES ACT (ADA) REQUIREMENTS. IF THERE IS A CONFLICT IN THE REQUIREMENTS, THE STRICTEST REQUIREMENTS SHALL GOVERN.
2. CURB RAMPS THAT ARE STEEPER THAN A 1:15 MAX SLOPE WILL NOT BE ACCEPTED BY THE CITY OF HOUSTON.

PAVERS

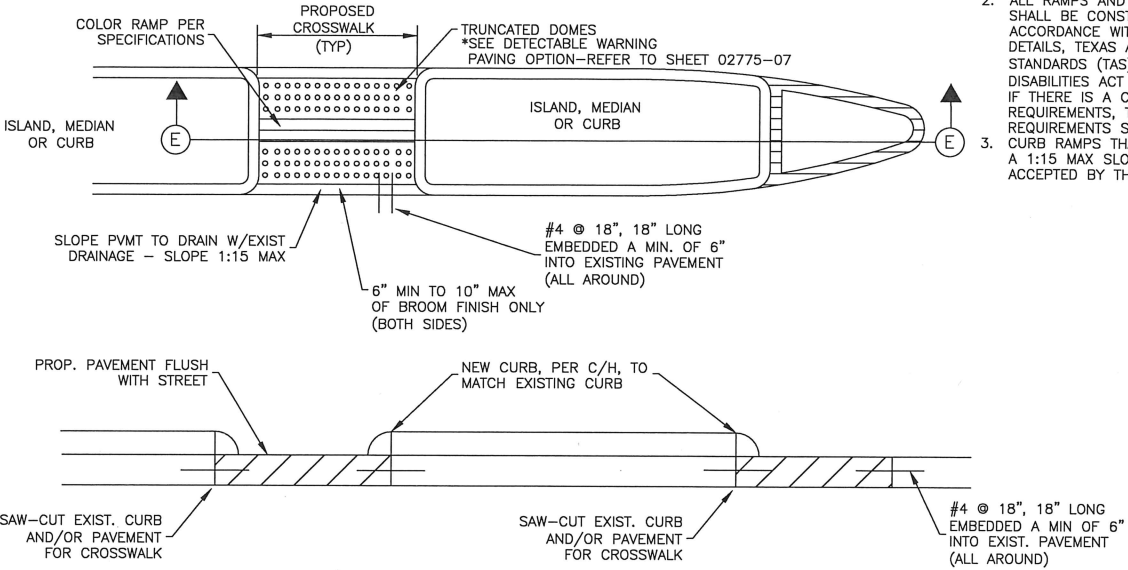
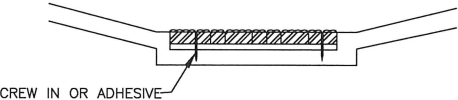
1. FURNISH DETECTABLE WARNING SURFACE UNITS MEETING ALL REQUIREMENTS OF ASTM C-936, C-33. LAY IN A TWO BY TWO UNIT BASKET WEAVE PATTERN OR AS DIRECTED.
2. LAY FULL-SIZE UNITS FIRST FOLLOWED BY CLOSURE UNITS CONSISTING OF AT LEAST 25 PERCENT OF A FULL UNIT. CUT DETECTABLE WARNING POWER UNITS USING A POWER SAW.

POLYMER CONCRETE

1. DETECTABLE WARNING TILES SHALL BE MADE OF POLYMER CONCRETE MATERIALS.
2. DETECTABLE WARNING TILES SHALL BE INSTALLED INTO FRESH CONCRETE (CAST-IN-PLACE) UTILIZING AN ANCHORING SYSTEM.
3. DETECTABLE WARNING TILES SHALL BE OF TERRACOTTA (BRICK-RED) COLOR AND COLORED THROUGHOUT TO GUARANTEE THE ADA REQUIRED COLOR CONTRAST.
4. DETECTABLE WARNING TILES SHALL MEET OR EXCEED THE FOLLOWING ASTM-BASED "STANDARDS" FOR CONCRETE MATERIALS.
A. COMPRESSION STRENGTH > 12,500 PSI PER ASTM C 39-04
B. WATER ABSORPTION < 0.25% PER ASTM C 97-09

PADS

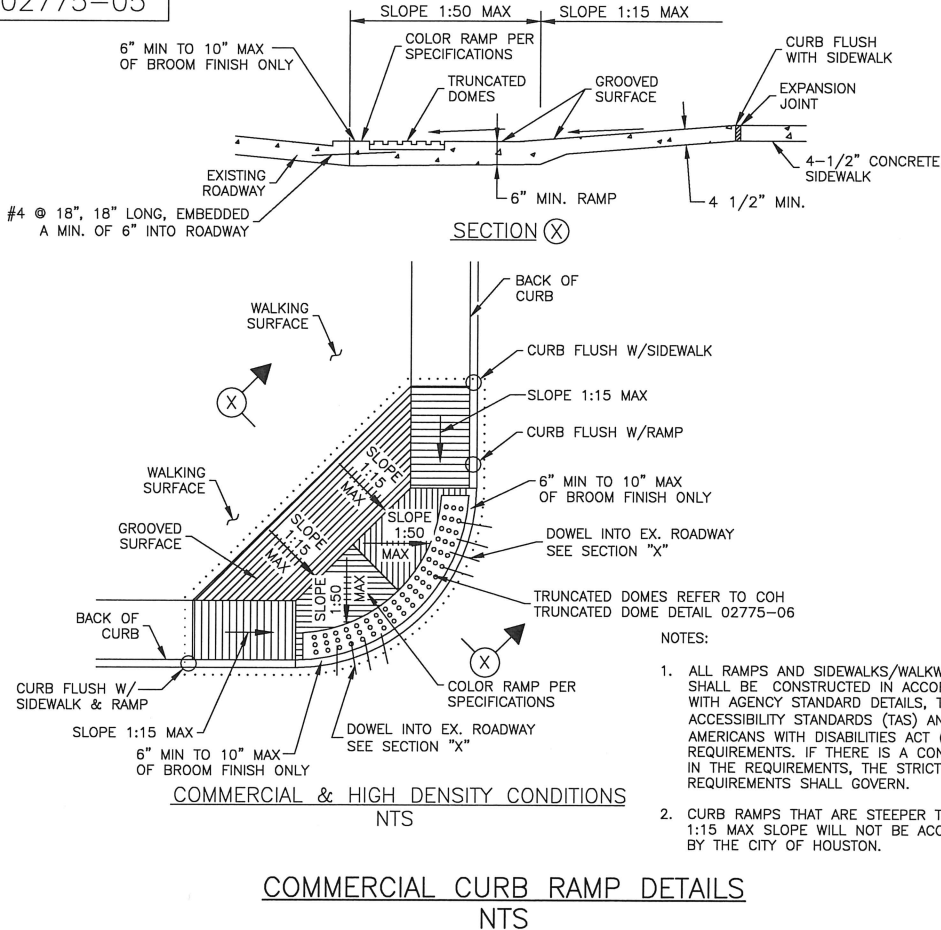
1. FURNISH REQUIREMENTS OF ADAAG (MARCH 2003).
2. OTHER MATERIALS MAY BE USED IF APPROVED BY NTHE CITY ENGINEER



SECTION (E)

FOR ISLAND, MEDIAN, OR CURB MODIFICATIONS FOR CROSSWALKS

CURB MODIFICATIONS FOR WHEEL CHAIR RAMPS & CROSSWALKS
NTS



NOTES:

1. ALL RAMPS AND SIDEWALKS/WALKWAYS SHALL BE CONSTRUCTED IN ACCORDANCE WITH AGENCY STANDARD DETAILS, TEXAS ACCESSIBILITY STANDARDS (TAS) AND AMERICANS WITH DISABILITIES ACT (ADA) REQUIREMENTS. IF THERE IS A CONFLICT IN THE REQUIREMENTS, THE STRICTEST REQUIREMENTS SHALL GOVERN.
2. CURB RAMPS THAT ARE STEEPER THAN A 1:15 MAX SLOPE WILL NOT BE ACCEPTED BY THE CITY OF HOUSTON.

CITY OF HOUSTON
HOUSTON PUBLIC WORKS

STREET PAVING AND SIDEWALK
02775-04 THROUGH 02775-07

APPROVED BY: [Signature] CITY ENGINEER
APPROVED BY: [Signature] DEPUTY DIRECTOR

APPROVED BY: [Signature] DIRECTOR OF HOUSTON PUBLIC WORKS

EFFECTIVE DATE: JUL-01-2020
FOR CITY OF HOUSTON USE ONLY