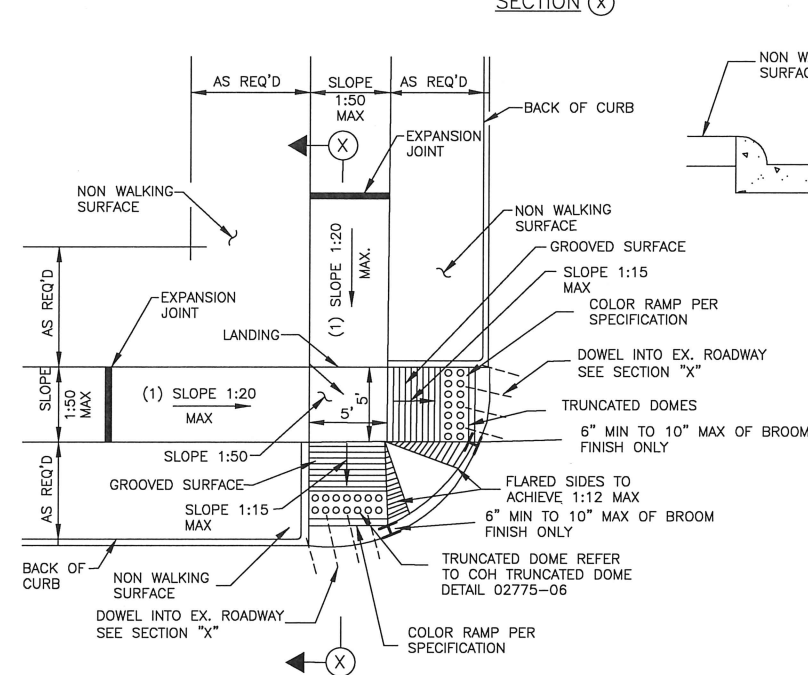
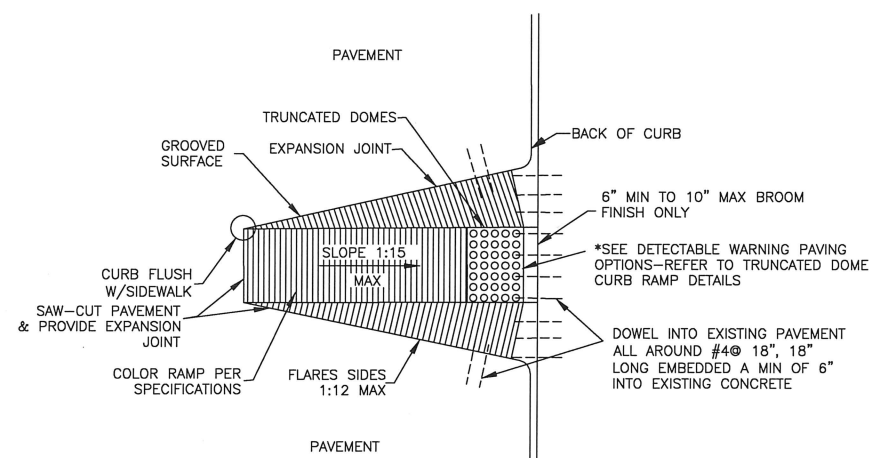


SECTION X

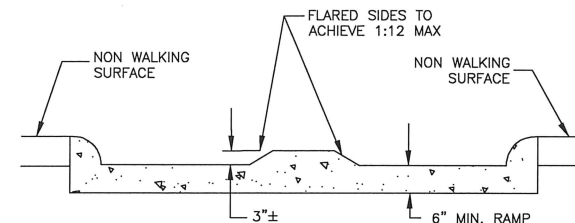


STREETS WITH NON-WALKING SURFACE BEHIND CURB NTS



RAMP CONSTRUCTION FOR EXISTING PAVEMENT

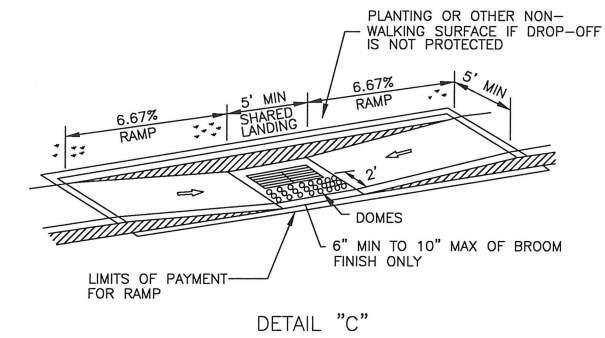
WHEEL CHAIR RAMP DETAILS NTS



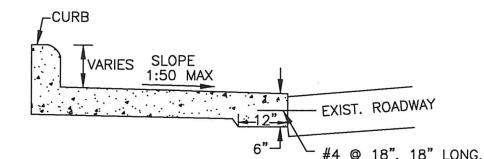
ELEVATION LOOKING UP RAMP NTS

NOTES:

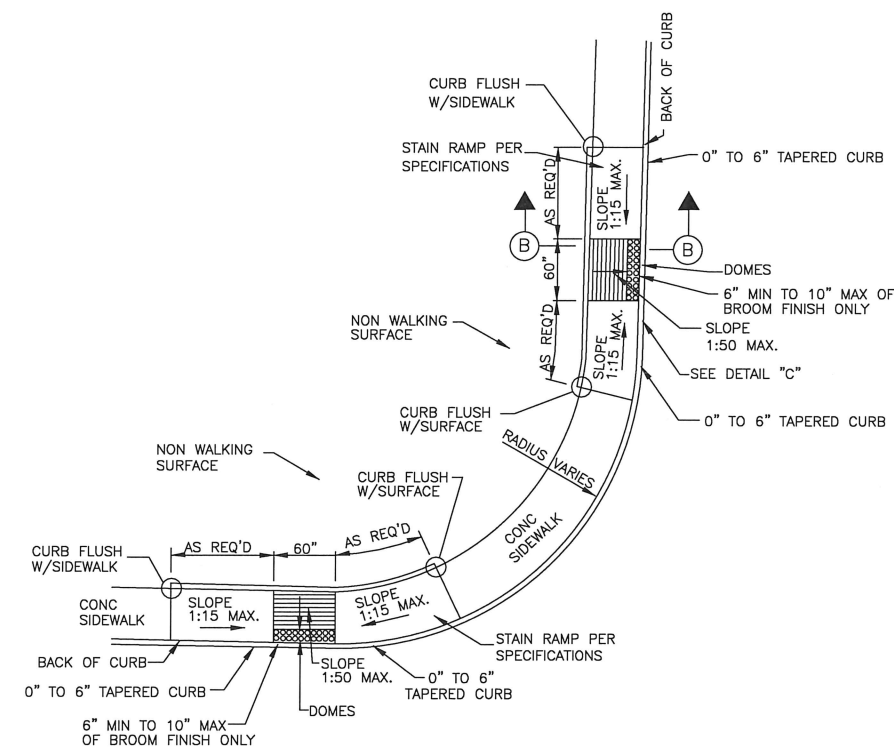
1. REPLACE EXISTING SIDEWALK FROM LEVEL LANDING AS NECESSARY TO ACHIEVE 1:20 SLOPE
2. SLOPES GREATER THAN 1:20 BUT LESS THAN 1:15 (MAX) REQUIRE GROOVES AND COLORING
3. BROOM FINISH IS MEASURED FROM FACE OF CURB.
4. ALL RAMPS AND SIDEWALKS/WALKWAYS SHALL BE CONSTRUCTED IN ACCORDANCE WITH AGENCY STANDARD DETAILS, TEXAS ACCESSIBILITY STANDARDS (TAS) AND AMERICANS WITH DISABILITIES ACT (ADA) REQUIREMENTS. IF THERE IS A CONFLICT IN THE REQUIREMENTS, THE STRICTEST REQUIREMENTS SHALL GOVERN.
5. CURB RAMPS THAT ARE STEEPER THAN A 1:15 MAX SLOPE WILL NOT BE ACCEPTED BY THE CITY OF HOUSTON.



DETAIL "C"



SECTION B N.T.S.



SIDEWALK ON BACK OF CURB N.T.S.


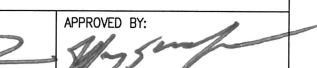
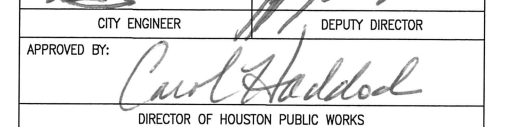
PARALLEL CURB RAMP NTS

NOTES:

1. ALL RAMPS AND SIDEWALKS/WALKWAYS SHALL BE CONSTRUCTED IN ACCORDANCE WITH AGENCY STANDARD DETAILS, TEXAS ACCESSIBILITY STANDARDS (TAS) AND AMERICANS WITH DISABILITIES ACT (ADA) REQUIREMENTS. IF THERE IS A CONFLICT IN THE REQUIREMENTS, THE STRICTEST REQUIREMENTS SHALL GOVERN.
2. CURB RAMPS THAT ARE STEEPER THAN A 1:15 MAX SLOPE WILL NOT BE ACCEPTED BY THE CITY OF HOUSTON.

CITY OF HOUSTON
HOUSTON PUBLIC WORKS

STREET PAVING AND SIDEWALK
02775-02 THROUGH 02775-03

APPROVED BY:  CITY ENGINEER
APPROVED BY:  DEPUTY DIRECTOR
APPROVED BY:  DIRECTOR OF HOUSTON PUBLIC WORKS

EFFECTIVE DATE: JUL-01-2020

FOR CITY OF HOUSTON USE ONLY

SHEET NO.