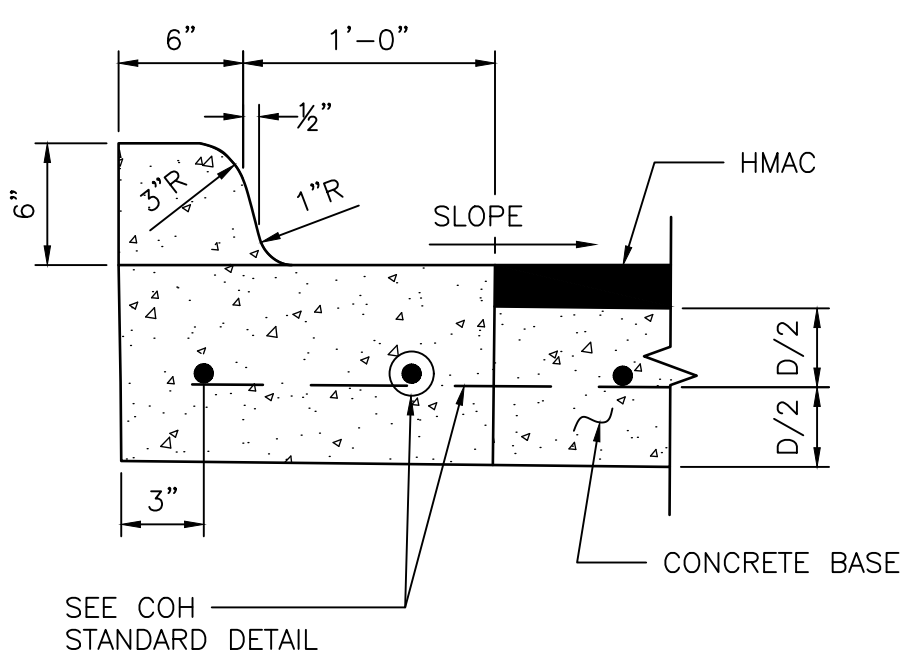
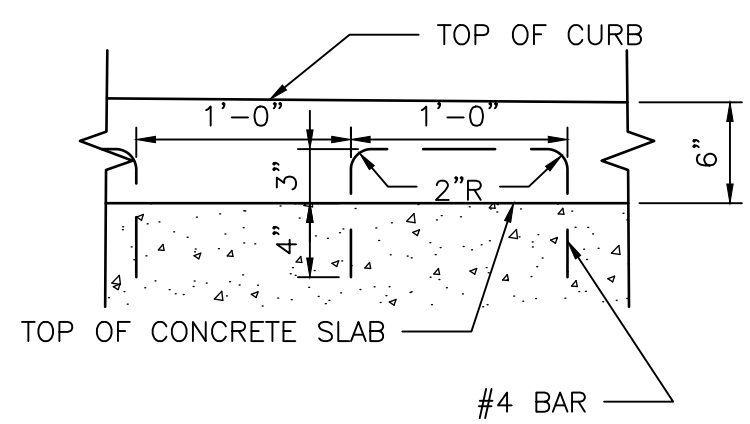


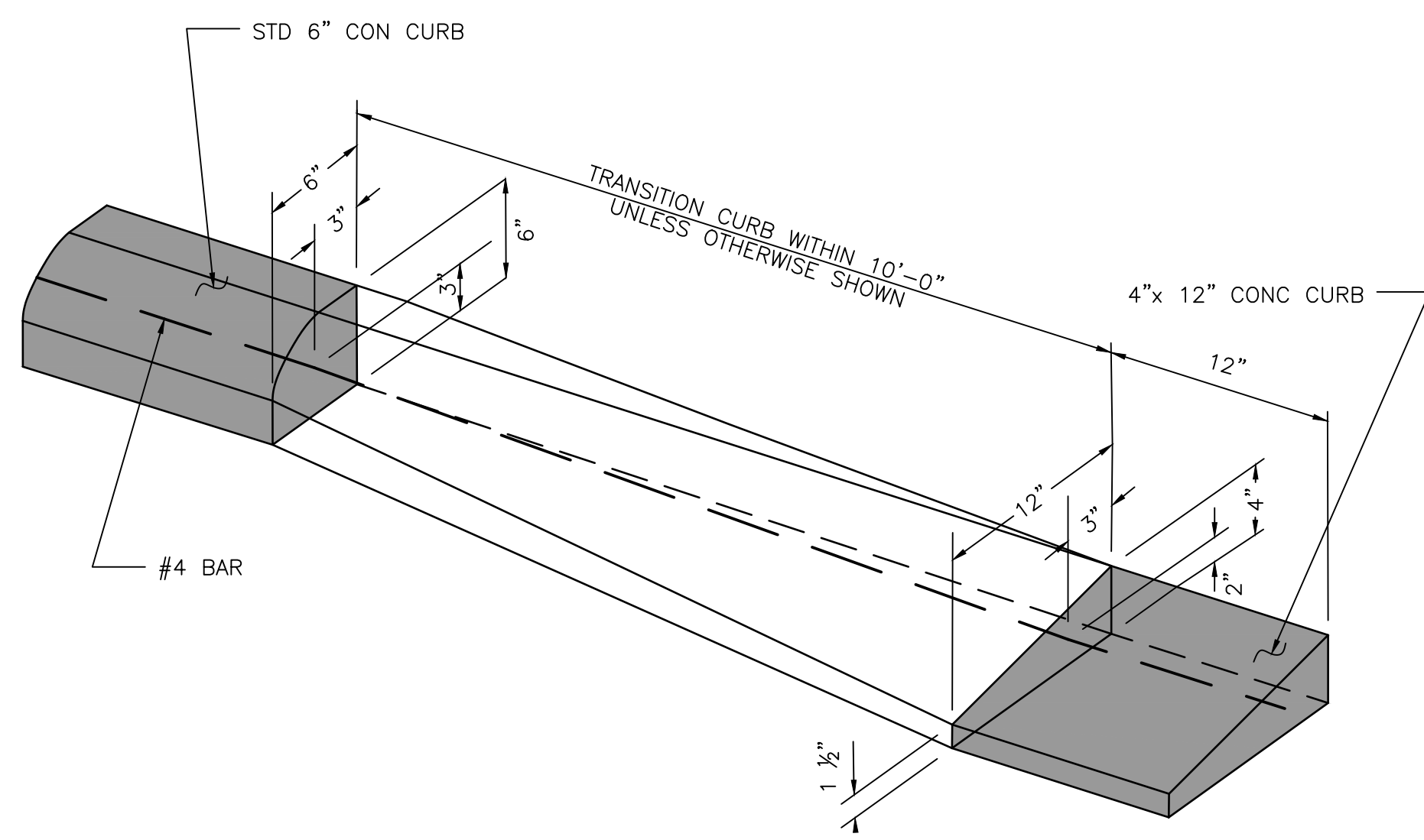
DISCLAIMER: THE USE OF THIS STANDARD IS GOVERNED BY THE TEXAS ENGINEERING PRACTICE ACT. THE DESIGN REQUIREMENTS ON THIS STANDARD DO NOT PURPORT TO ADDRESS ALL OF THE SAFETY CONCERNS ASSOCIATED WITH THE USE OF RECORD (EOR) IS TO REVIEW THESE DESIGN REQUIREMENTS AND BY AUTHORIZING THEIR USE, ACCEPTS RESPONSIBILITY FOR THEIR APPLICABILITY, ADEQUACY AND SAFETY. NO WARRANTY OF ANY KIND IS MADE BY THE CITY OF HOUSTON FOR ANY PURPOSES WHATSOEVER. THE CITY OF HOUSTON ASSUMES NO RESPONSIBILITY FOR INCORRECT RESULTS OR DAMAGES RESULTING FROM ITS USE.



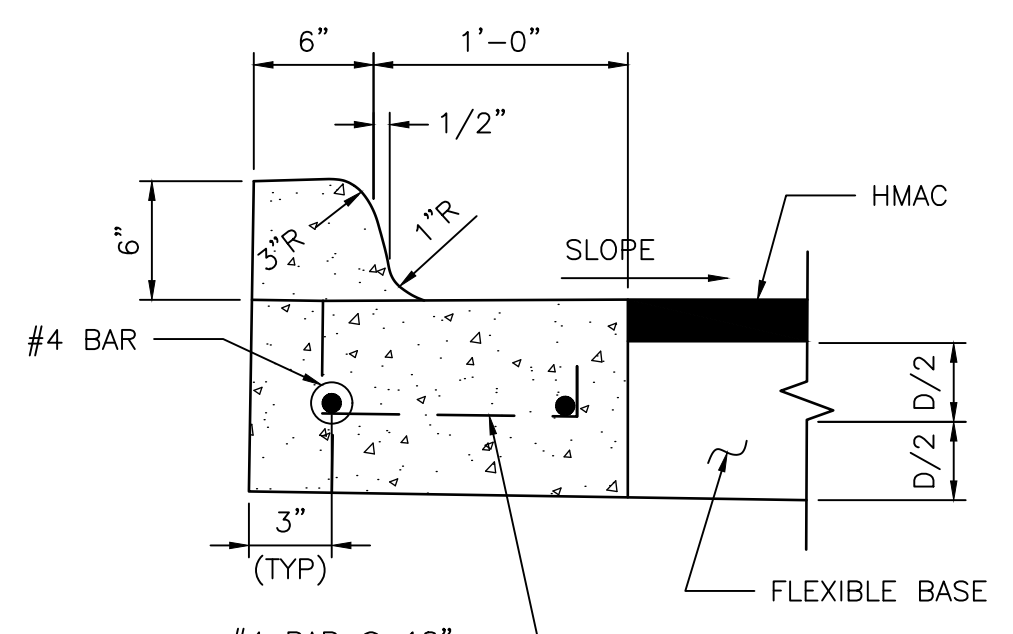
ESPLANADE CURB CONNECTED TO CONCRETE BASE



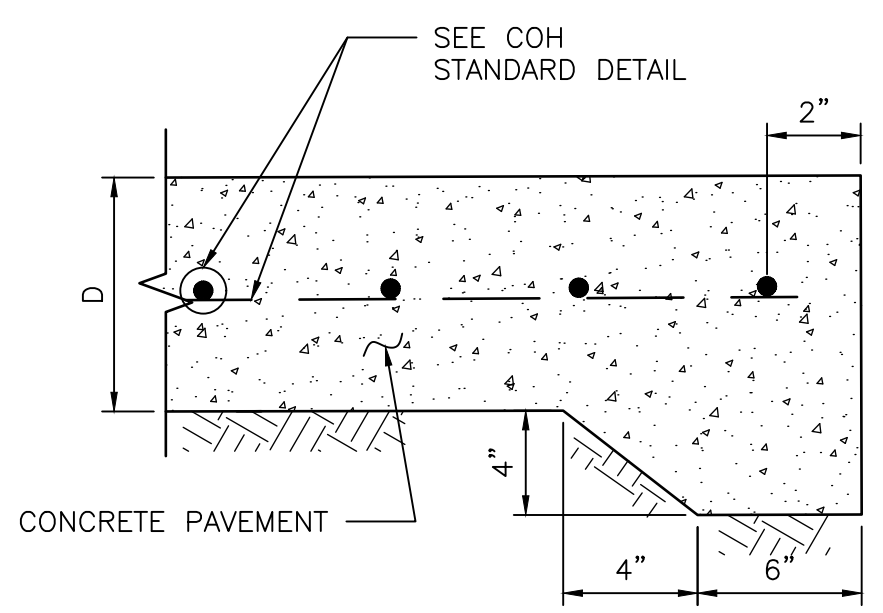
ALTERNATE CONCRETE CURB REINFORCEMENT



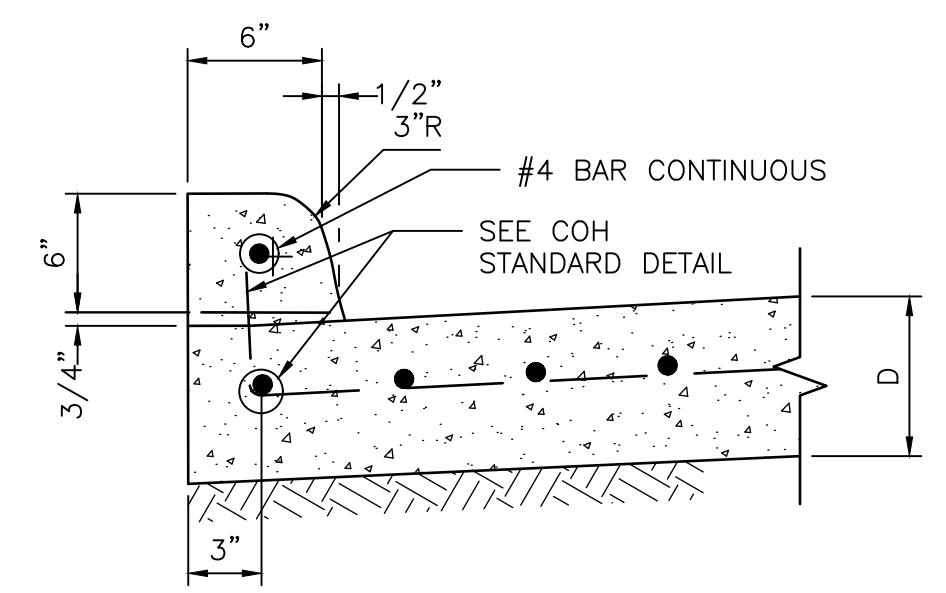
CURB TRANSITION
(SEE NOTES)



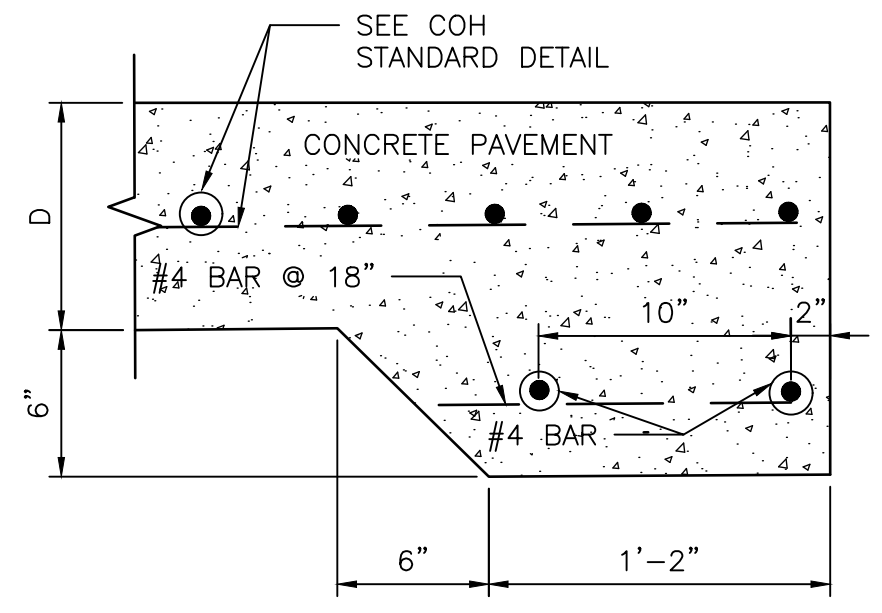
ESPLANADE CURB CONNECTED TO FLEXIBLE BASE



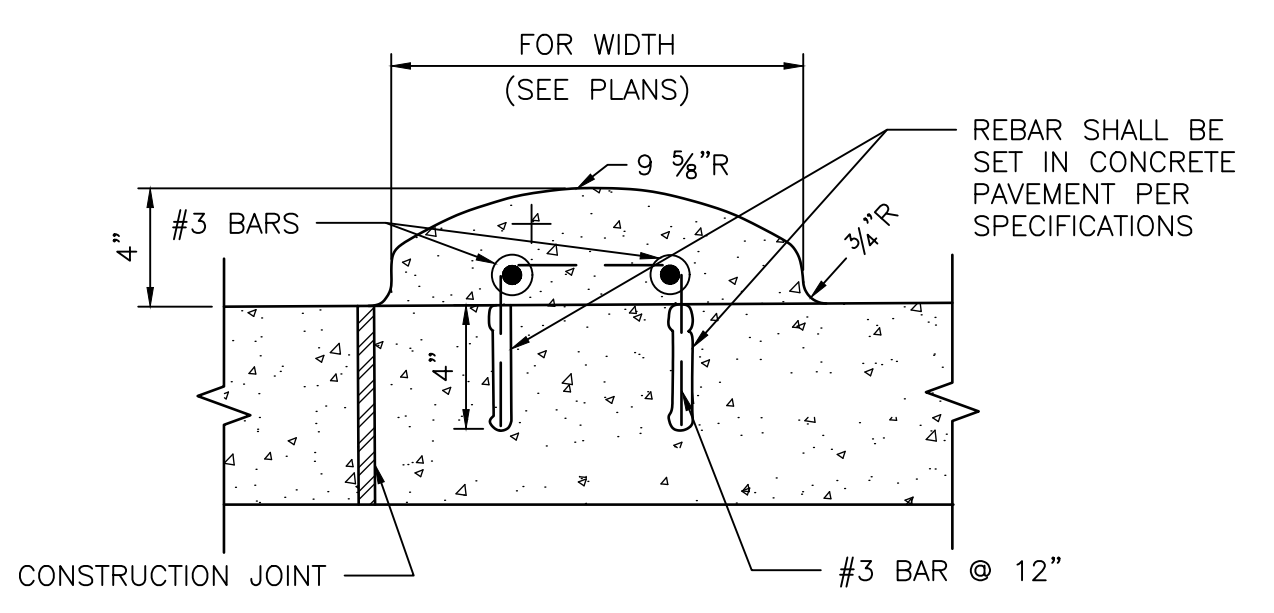
STANDARD CONCRETE PAVING HEADER



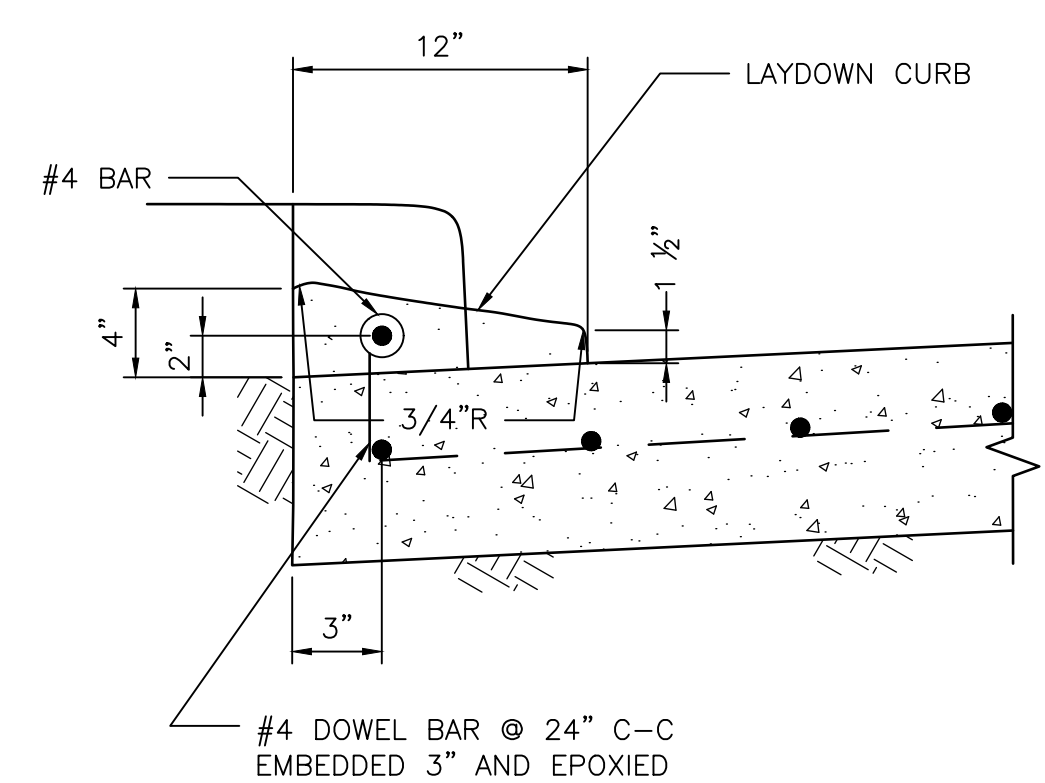
CONCRETE CURB



STANDARD RAILROAD HEADER



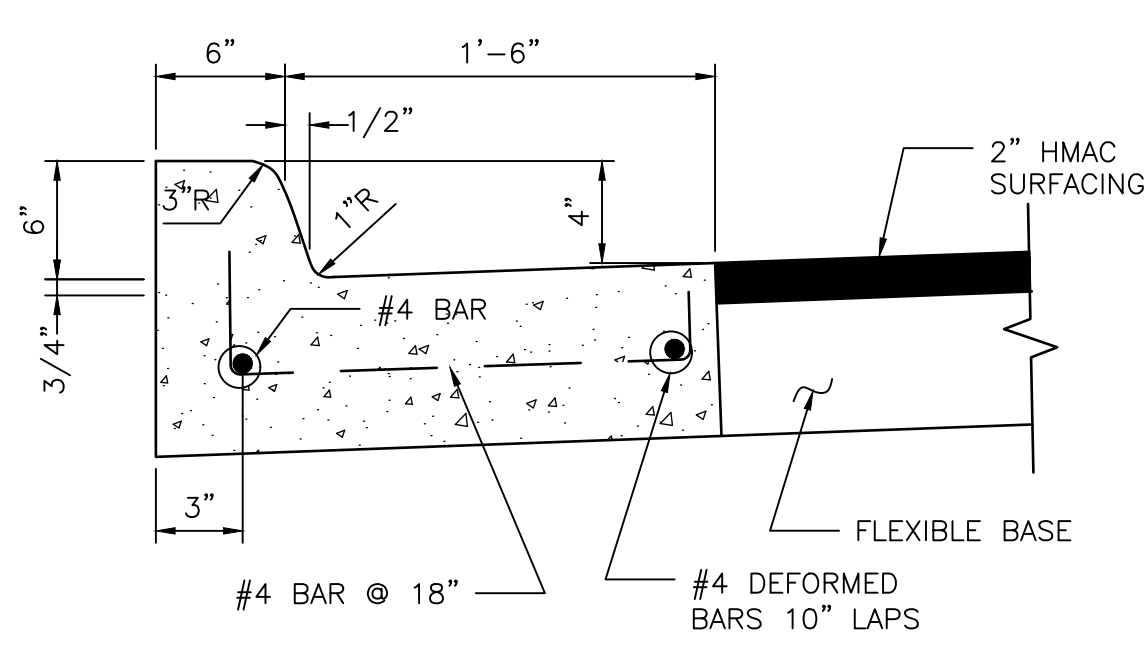
MOUNTABLE CURB



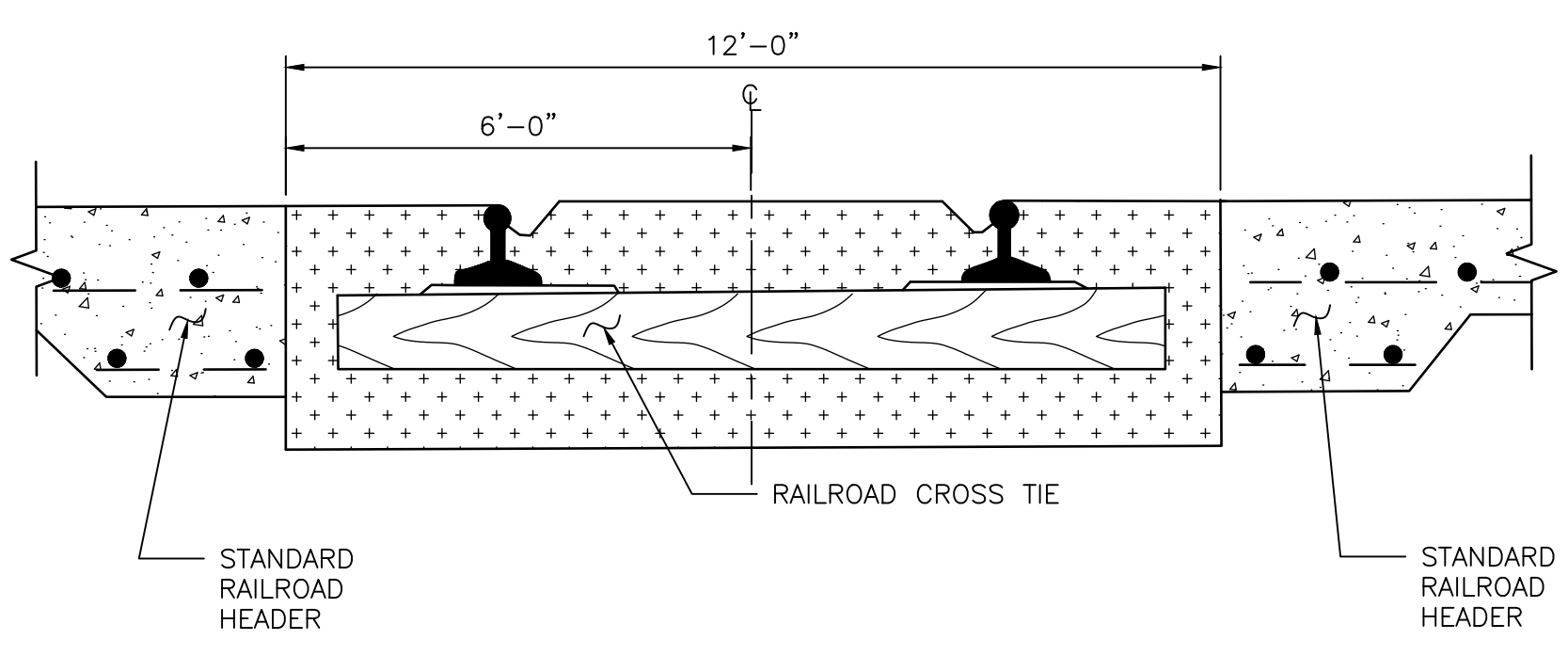
4-INCH x 12-INCH TRANSITION CURB

(SEE NOTES)

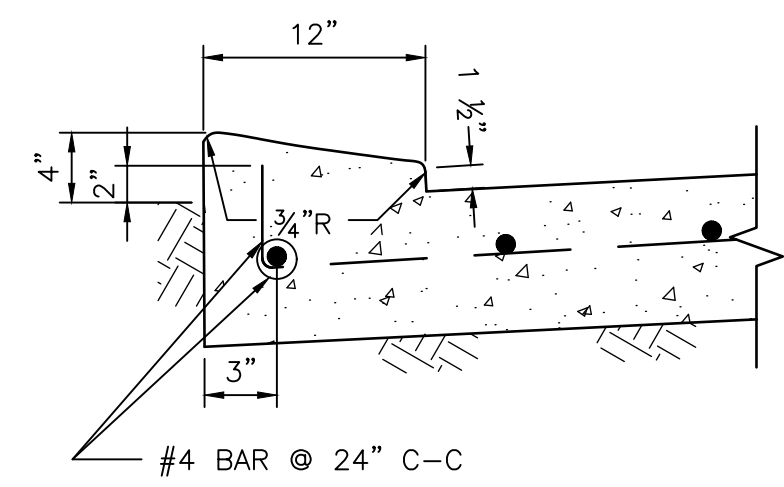
WHEN CONCRETE CURB IS TO BE PLACED EXISTING CONCRETE USE BASE
 #4 BAR @ 18x10" LONG, DOWELED AND SET IN EPOXY GROUT.
 SET #4 DOWEL BARS, 25" LONG AT 12" C-C WHEN PAVEMENT SECTION POURED.



MONOLITHIC CURB AND GUTTER



STANDARD RAILROAD CROSSING - SINGLE TRACK



4-INCH x 12-INCH MONOLITHIC CURB

(SEE NOTES)

4"x12" MONOLITHIC AND TRANSITION CURB NOTES:

- 6-INCH CONCRETE CURB TO BE CONSTRUCTED ON ALL ESPLANADES, ISLANDS, NON-RESIDENTIAL STREETS, AND RESIDENTIAL STREETS.
- TRANSITIONS FROM 6-INCH CONCRETE CURB TO 4-INCH x 12-INCH CONCRETE CURB TO BE ACCOMPLISHED WITHIN 10 FEET, UNLESS OTHERWISE SHOWN. IF THIS 10-FEET TRANSITION CURB IS NOT POURED MONOLITHICALLY WITH THE PAVEMENT, THEN REINFORCING STEEL AS SHOWN IN "4-INCH x 12-INCH TRANSITION CURB" IS TO BE INSTALLED.

APPROVED BY: DocuSigned by: Sulail Kanwar 9EF8D0C41F5478	APPROVED BY: DocuSigned by: KEATING NGUYEN 95A29EFD475B4C0D
CITY ENGINEER	CITY TRAFFIC ENGINEER
APPROVED BY: DocuSigned by: Carl Stallard A83C41087255453	
DIRECTOR OF HOUSTON PUBLIC WORKS	
EFF DATE: NOV-27-2023	DWG NO: 02771-01
CITY OF HOUSTON HOUSTON PUBLIC WORKS STANDARD	
CURB, CURB AND GUTTER AND HEADER DETAILS	
	FOR CITY OF HOUSTON USE ONLY
DRAWING SCALE	
NOT TO SCALE	