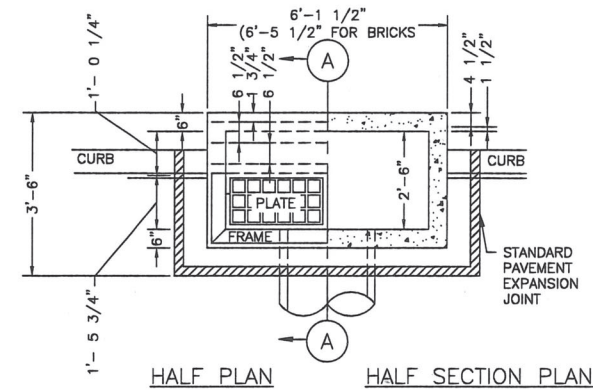
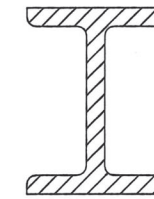
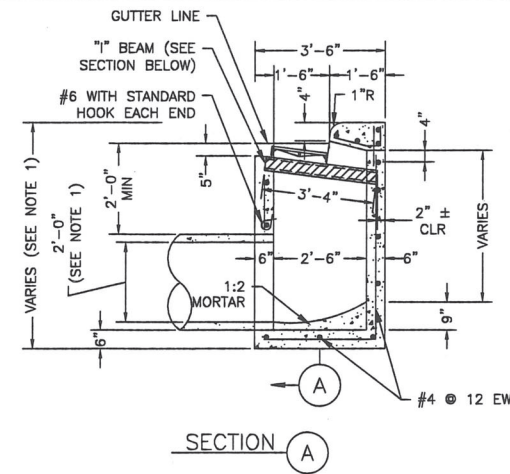


02632-04



GENERAL NOTES:

USE STANDARD CAST IRON FRAME & PLATES.
LEAD SHALL LEAVE INLET AT LOCATION AND GRADE REQUIRED.



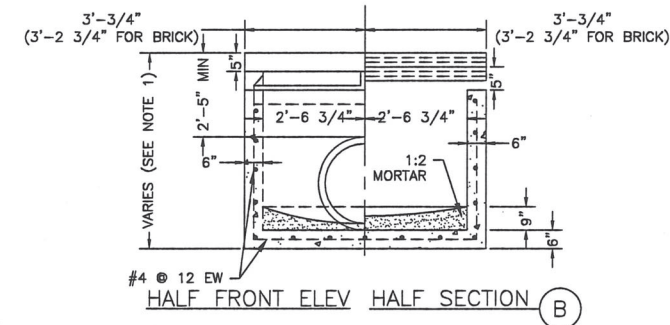
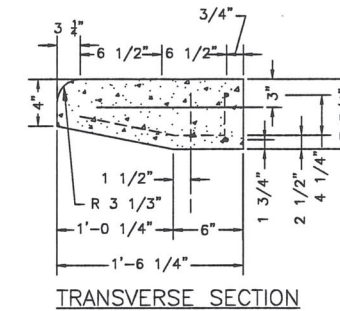
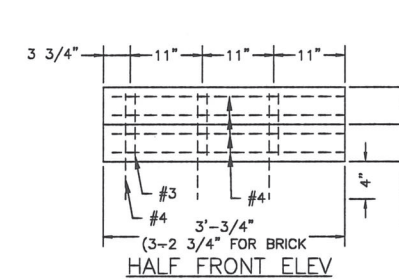
ACCEPTABLE
ALTERNATE STEEL
BEAM SIZES: S6X17.5
W6X16 (GALVANIZED)

CURB BEAM BAR LIST				
NO	SIZE	LENGTH	SHAPE	LOC
4	#4	5'-10"	ST	HOR
7	#4	0'-10"	ST	VERT
7	#3	1'-6"	BT	

SECTION THRU BEAM

NOTES:

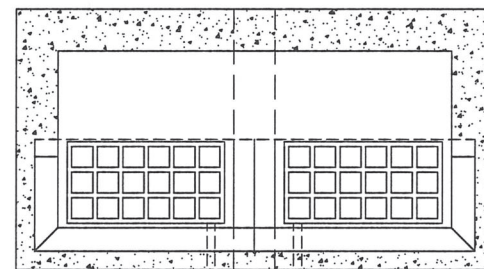
1. DIMENSION VARIES BASED ON PIPE DIAMETER AND WALL THICKNESS.
2. CENTER REINFORCING IN SLAB AND WALLS. CENTER STEEL BEAM ON INLET AND CAST INTO WALLS AS SHOWN.
3. WHEN TOP OF CURB TO FLOWLINE IS GREATER THAN 8 FEET USE TYPE "C" INLET.

STORM SEWER TYPE "B-B" INLET
NTS

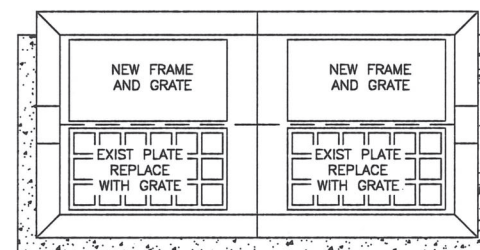
PRECAST CURB BEAM

02632-05

STEP 1: EXIST TYPE "B" INLET

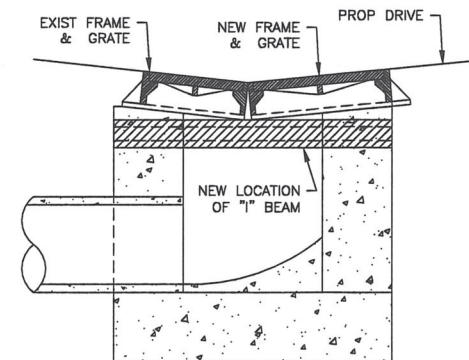
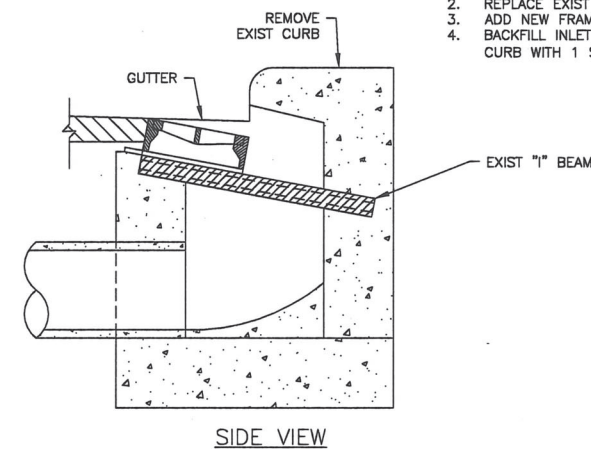


STEP 2:

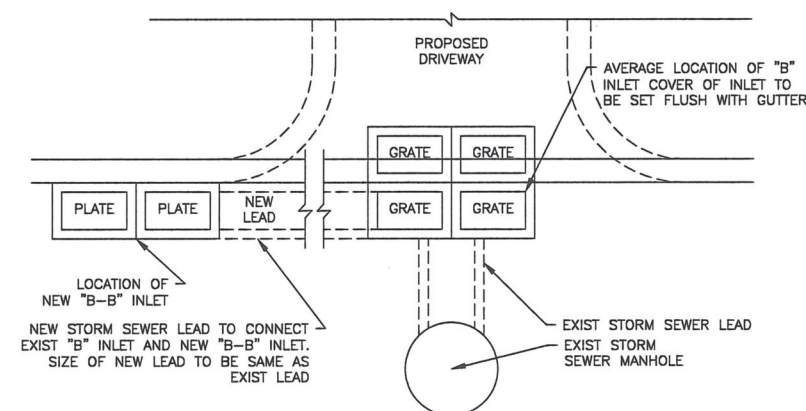


NOTES:

1. AFTER REMOVING EXIST CURB, RAISE EXIST FRAME TO GUTTER GRADE.
2. REPLACE EXIST PLATE WITH A GRATE.
3. ADD NEW FRAME AND GRATE NEXT TO EXIST FRAME.
4. BACKFILL INLET TO A POINT ONE FOOT BEHIND THE CURB WITH 1 SACK/TON CEMENT STABILIZED SAND.

STORM SEWER TYPE "B" INLET RELOCATION
NTS

STEP 3: CONSTRUCT NEW TYPE "B-B" INLET ON CURB RETURN OF PROPOSED DRIVEWAY



FIRM INFORMATION

ENGINEER'S SEAL

CITY OF HOUSTON
HOUSTON PUBLIC WORKSSTORM SEWER
02632-04 THROUGH 05

APPROVED BY:

CITY ENGINEER

APPROVED BY:

DEPUTY DIRECTOR

APPROVED BY:

DIRECTOR

EFFECTIVE DATE: JUL-01-2019

FOR CITY OF HOUSTON USE ONLY

SHEET NO.