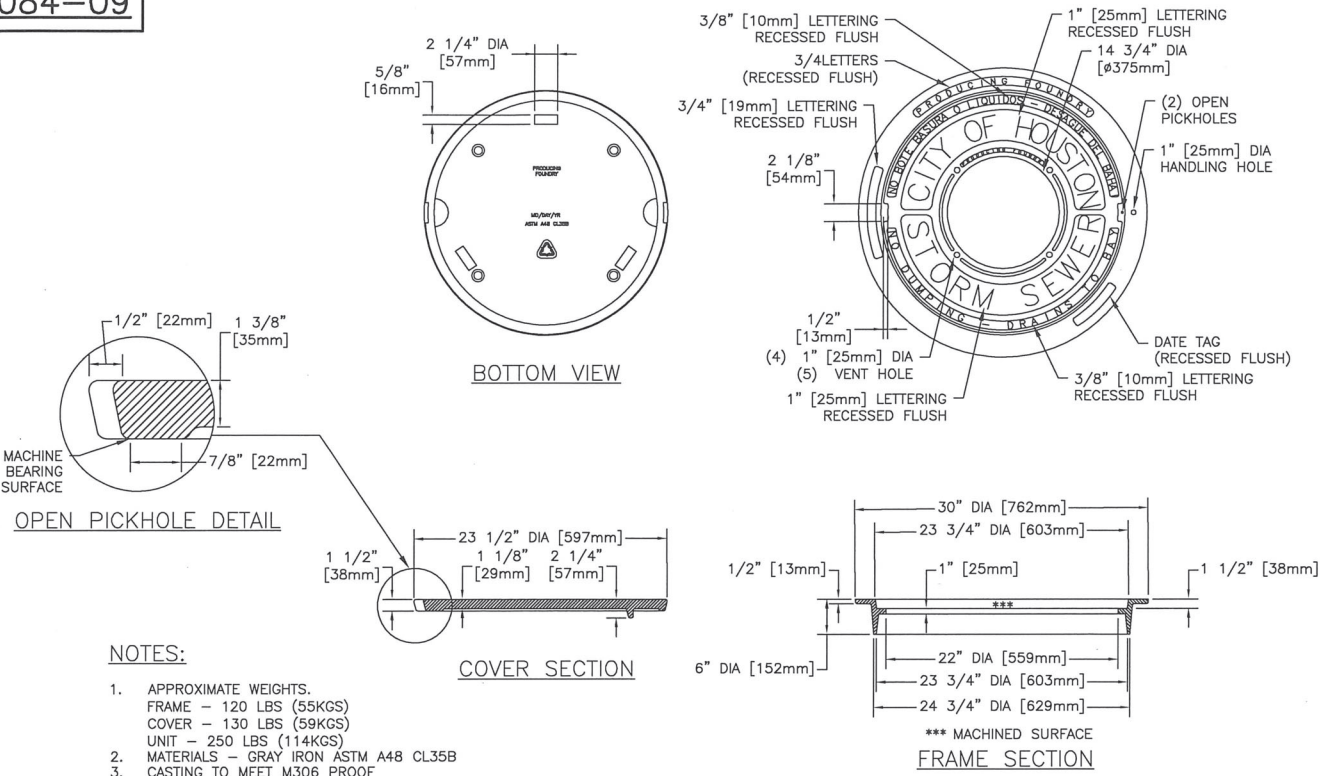


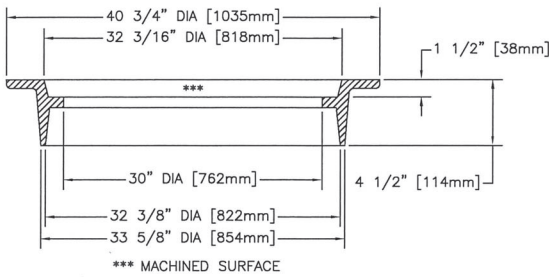
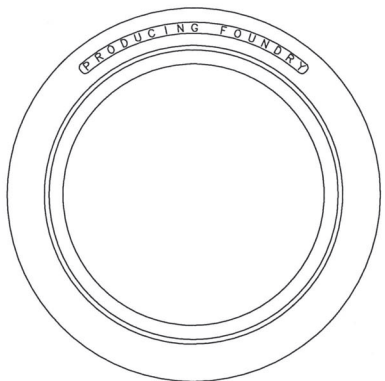
02084-09



- NOTES:
1. APPROXIMATE WEIGHTS.
FRAME - 120 LBS (55KGS)
COVER - 130 LBS (59KGS)
UNIT - 250 LBS (114KGS)
 2. MATERIALS - GRAY IRON ASTM A48 CL35B
 3. CASTING TO MEET M306 PROOF
LOAD SPECIFICATION
 4. EJIW V-1814 ASY OR APPROVED EQUAL

STORM SEWER TYPE "C-1, C-2, C-2A"
AND "H-2" INLET FRAME AND COVER
NTS

02084-10



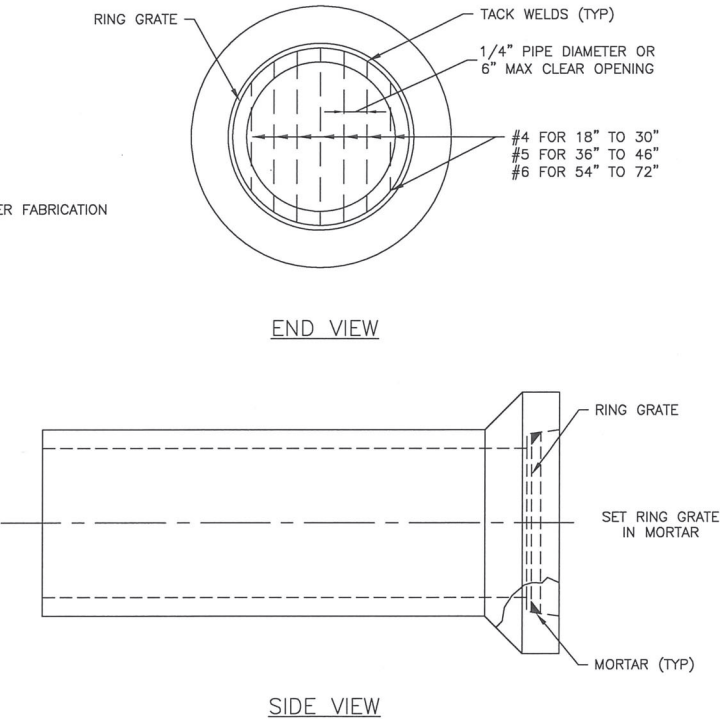
- NOTES:
1. APPROXIMATE WEIGHTS.
FRAME - 190 LBS (86KGS)
 2. MATERIALS - GRAY IRON ASTM A48 CL35B
 3. CASTING TO MEET M306 PROOF
LOAD SPECIFICATION
 4. EJIW V-1816 ASY OR APPROVED EQUAL

32" INVERTED MANHOLE FRAME
NTS

02084-11

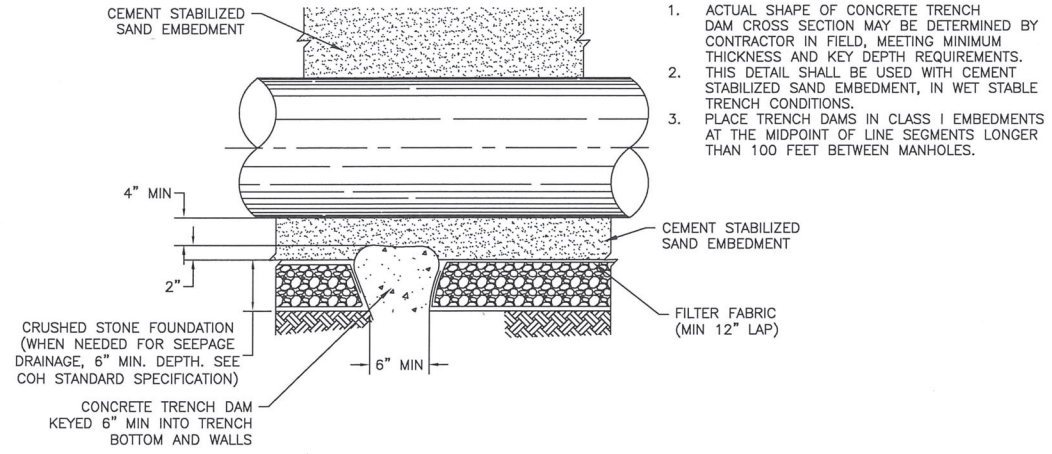
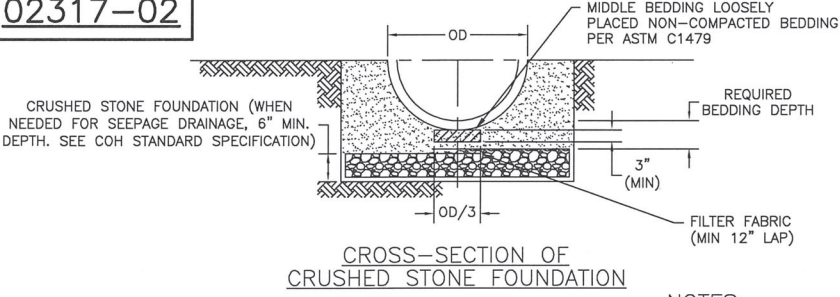
NOTES:

1. GALVANIZED GRATE AFTER FABRICATION



STORM SEWER
RING GRATE FOR OPEN END
OF 18" TO 72" RCP STUBS TO DITCH
NTS

02317-02



SANITARY OR STORM SEWER CRUSHED STONE
FOUNDATION FOR WET STABLE TRENCH
NTS

FIRM INFORMATION
CITY OF HOUSTON
HOUSTON PUBLIC WORKS

STORM SEWER
02084-09 THROUGH 11
AND 02317-02

APPROVED BY: *[Signature]*
CITY ENGINEER

APPROVED BY: *[Signature]*
DEPUTY DIRECTOR

DIRECTOR

EFFECTIVE DATE: JUL-01-2019

FOR CITY OF HOUSTON USE ONLY

SHEET NO.